

| | | |
|-----------|--|---|
| Project | IEEE 802.16 Broadband Wireless Access Working Group < http://ieee802.org/16 > | |
| Title | MS CDMA-based BR in Transparent RS system | |
| Date | 2006-03-05 | |
| Submitted | | |
| Source(s) | <p>Kanchei (Ken) Loa, Yi-Hsueh Tsai, Chih-Chiang Hsieh, Yung-Ting Lee, Hua-Chiang Yin, Shiann-Tsong Sheu, Frank C.D. Tsai, Youn-Tai Lee, Heng-Iang Hsu Institute for Information Industry 8F., No. 218, Sec. 2, Dunhua S. Rd., Taipei City, Taiwan.</p> <p>Hang Zhang, Peiyong Zhu, Mo-Han Fong, Wen Tong, David Steer, Gamini Senarath, Derek Yu, Mark Naden, G.Q. Wang Nortel 3500 Carling Avenue Ottawa, Ontario K2H 8E9</p> <p>Gang Shen, Zhang KaiBin Alcatel Shanghai Bell Co., Ltd.</p> | <p>Voice: +886-2-2739-9616 loa@iii.org.tw</p> <p>Voice: +1 613 7631315 WenTong@nortel.com pyzhu@nortel.com</p> <p>Voice: 86-21-58541240-8194 Gang.A.Shen@alcatel-sbell.com.cn</p> |
| Re: | IEEE 802.16j-07/007r2: "Call for Technical Comments and Contributions regarding IEEE Project 802.16j" | |
| Abstract | This contribution proposes procedures for MS CDMA-based BR in transparent RS system | |
| Purpose | Text proposal for 802.16j Baseline Document | |
| Notice | This document has been prepared to assist IEEE 802.16. It is offered as a basis for discussion and is not binding on the contributing individual(s) or organization(s). The material in this document is subject to change in form and content after further study. The contributor(s) reserve(s) the right to add, amend or withdraw material contained herein. | |
| Release | The contributor grants a free, irrevocable license to the IEEE to incorporate material contained in this contribution, and any modifications thereof, in the creation of an IEEE Standards publication; to copyright in the IEEE's name any IEEE Standards publication even though it may include portions of this contribution; and at the IEEE's sole discretion to permit others to reproduce in whole or in part the resulting IEEE Standards publication. The contributor also acknowledges and accepts that this contribution may be made public by IEEE 802.16. | |

| | |
|------------------------------|--|
| Patent Policy and Procedures | <p>The contributor is familiar with the IEEE 802.16 Patent Policy and Procedures <http://ieee802.org/16/ipr/patents/policy.html>, including the statement "IEEE standards may include the known use of patent(s), including patent applications, provided the IEEE receives assurance from the patent holder or applicant with respect to patents essential for compliance with both mandatory and optional portions of the standard." Early disclosure to the Working Group of patent information that might be relevant to the standard is essential to reduce the possibility for delays in the development process and increase the likelihood that the draft publication will be approved for publication. Please notify the Chair <mailto:chair@wirelessman.org> as early as possible, in written or electronic form, if patented technology (or technology under patent application) might be incorporated into a draft standard being developed within the IEEE 802.16 Working Group. The Chair will disclose this notification via the IEEE 802.16 web site <http://ieee802.org/16/ipr/patents/notices>.</p> |
|------------------------------|--|

MS CDMA-based BR in Transparent RS system

Introduction

This contribution describes MS CDMA-based bandwidth request (BR) in transparent RS system. In order to facilitate the incorporation of this proposal into IEEE 802.16j standard, specific changes to the baseline working document IEEE 802.16j-06/026r2 are listed below.

Text Proposal

6.3.2.1 MAC header formats

6.3.2.1.1 Generic MAC header

6.3.2.1.1.1 Generic MAC header for relay

| Type bit | Value |
|-------------------------------|---|
| #5 most significant bit (MSB) | Relaying BR subheader 1 = present, 0 = absent |
| #4 | ARQ Feedback Payload 1 = present, 0 = absent |
| #3 | Extended Type Indicates whether the present Packing or Fragmentation Subheaders, is Extended 1 = Extended 0 = not Extended. Applicable to connections where ARQ is not enabled |
| #2 | Fragmentation subheader 1 = present, 0 = absent |
| #1 | Packing subheader 1 = present, 0 = absent |
| #0 | least significant bit (LSB) Downlink: FAST-FEEDBACK Allocation subheader Uplink: Grant Management subheader 1 = present, 0 = absent |

6.3.6 Bandwidth allocation and request mechanisms

6.3.6.8 Relaying support for Contention-based CDMA Bandwidth Requests

6.3.6.8.1 Contention-based CDMA Bandwidth Requests with transparent RS

The RS should support the CDMA-based mechanism as specified in the following paragraphs of this subclause. The BR ranging process shall begin by sending BR-ranging CDMA codes on the UL allocation dedicated for that purpose (for more details see 6.3.10.3). The RS shall monitor ranging channel assigned by the MR-BS.

The code may be received by the MR-BS and some RSs near the MS. RSs receiving the code with sufficient signal quality shall transmit a RNG-REQ to the MR-BS with the RS basic CID. The RNG-REQ message

contains ranging status, code attributes and adjustment information such as frequency, timing and transmission power. When a RS receives multiple codes in a frame, the RS sends a RNG-REQ message which contains information of multiple codes which are received with sufficient signal quality.

When the MR-BS receives ranging code, it shall wait for RNG-REQ with the same ranging code from its subordinate RSs for T48 timer. Once T48 timer expired, the MR-BS compares measured signal information at each station to decide the most appropriate path to communicate with the code originating MS, according to channel measurement information. Algorithms to select a path are out of scope of this document.

If the CDMA ranging code or the RNG-REQ message resulting in success status, the BS shall provide (an implementation dependent) uplink allocation for the corresponding MS by transmitting a CDMA allocation IE, which specifies the transmit region and Ranging Code that were used by the MS. The MS shall use the allocation to transmit a Bandwidth Request MAC PDU and/or data.

Table xxx: MS CDMA-based Bandwidth Request procedure in transparent RS systems

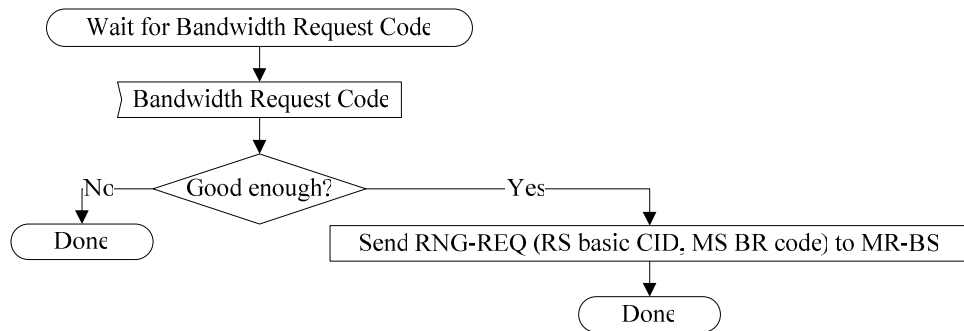
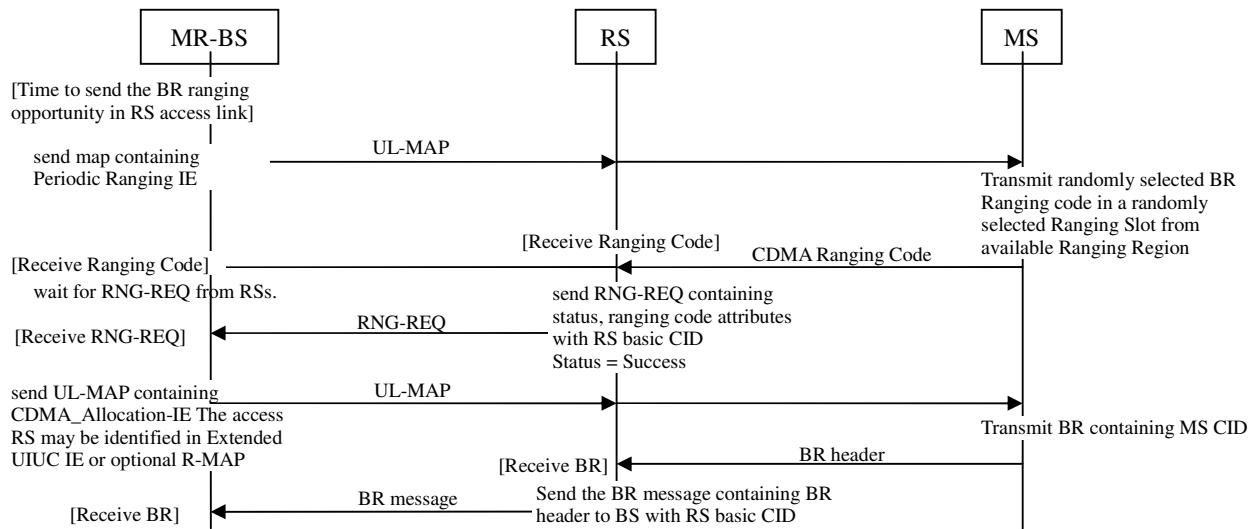


Figure xxx MS CDMA-based Bandwidth Request – Transparent Access RS (part 1)

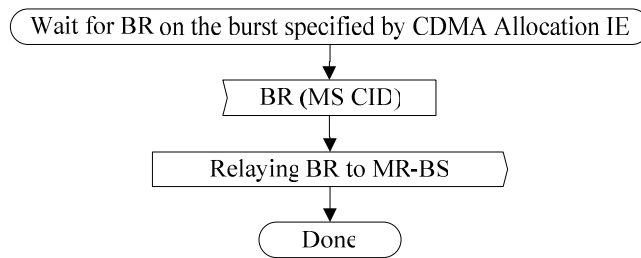


Figure xxx MS CDMA-based Bandwidth Request – Transparent Access RS (part 2)

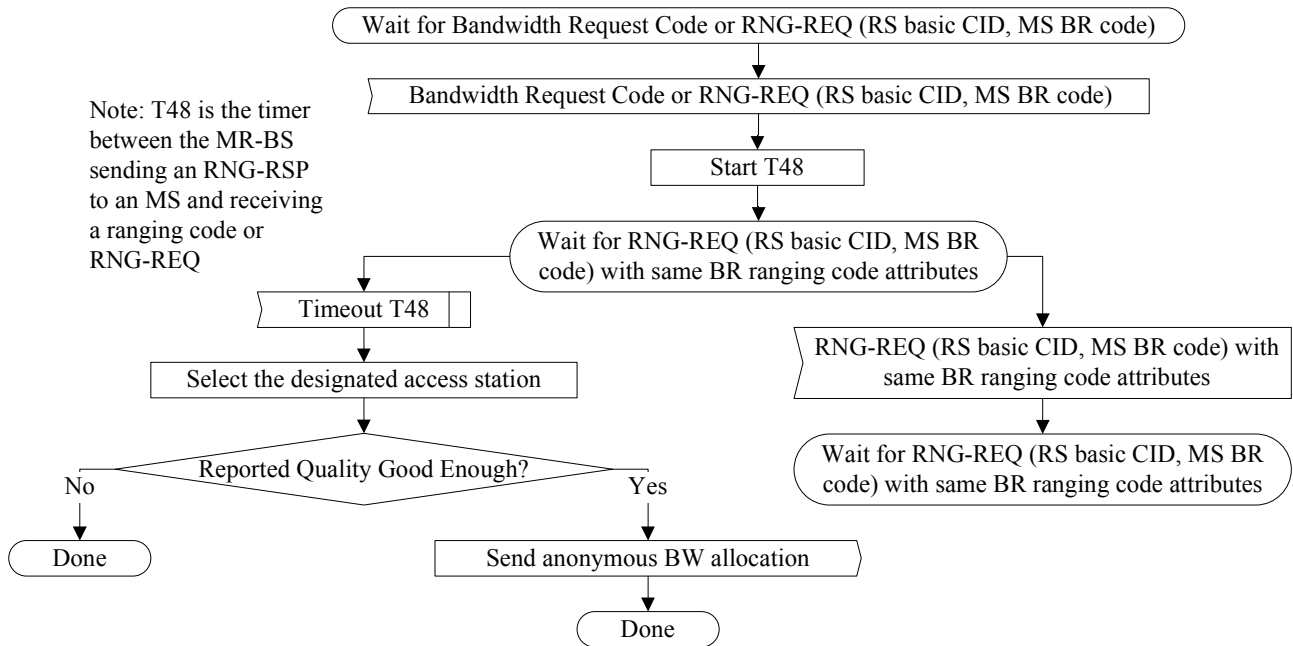


Figure yyy MS CDMA-based Bandwidth Request with Transparent RS – MR-BS

Insert the following rows into Table 342 at 10.1 Global Values:

Table 342—Parameters and constants

| System | Name | Time reference | Minimum value | Default value | Maximum value |
|-----------------------|---------------------|--|---------------------|---------------------|---------------|
| MR-BS | T48 | Wait for RNG-REQ from the subordinate RS | tbd | tbd | |

Insert the following rows into Table 364 at 11.5 RNG-REQ TLV:

Table 364—RNG-REQ message encodings

| Name | Type (1 byte) | Length | Value (variable-length) | PHY Scope |
|--|-----------------------|--------------------------|--|-----------------------|
| Received Ranging Codes | TBA | Variable | Received Ranging Codes is a compound TLV value that indicates received code information. | OFDMA |
| Timing Adjust | TBA.1 | 4 | Tx timing offset adjustment (signed 32-bit). The amount of time required to adjust SS | OFDMA |

| | | | | |
|--|--------------|------------|--|--------------|
| | | | <u>transmission so the bursts will arrive at the expected time instance at the BS. Units are PHY specific (see 10.3).</u> | |
| <u>Power Level Adjust</u> | <u>TBA.2</u> | <u>1</u> | <u>Tx Power offset adjustment (signed 8-bit, 0.25 dB units). Specifies the relative change in transmission power level that the SS is to make in order that transmissions arrive at the BS at the desired power. When subchannelization is employed, the subscriber shall interpret the power offset adjustment as a required change to the transmitted power density.</u> | <u>OFDMA</u> |
| <u>Offset Frequency Adjust</u> | <u>TBA.3</u> | <u>4</u> | <u>Tx frequency offset adjustment (signed 32-bit, Hz units). Specifies the relative change in transmission frequency that the SS is to make in order to better match the BS. (This is fine-frequency adjustment within a channel, not reassignment to a different channel.)</u> | <u>OFDMA</u> |
| <u>Ranging Status</u> | <u>TBA.4</u> | <u>1</u> | <u>Used to indicate whether uplink messages are received within acceptable limits by BS. 1 = continue, 2 = abort, 3 = success</u> | <u>OFDMA</u> |
| <u>Ranging code attributes</u> | <u>TBA.5</u> | <u>4</u> | <u>Bits 31:22 – Used to indicate the OFDM time symbol reference that was used to transmit the ranging code. Bits 21:16 – Used to indicate the OFDMA subchannel reference that was used to transmit the ranging code. Bits 15:8 – Used to indicate the ranging code index that was sent by the SS. Bits 7:0 – The 8 least significant bits of the frame number of the OFDMA frame where the SS sent the ranging code.</u> | <u>OFDMA</u> |
| <u>Channel Measurement Information</u> | <u>TBA.6</u> | <u>TBA</u> | <u>TBD</u> | |