

Project	IEEE 802.16 Broadband Wireless Access Working Group < <a href="http://ieee802.org/16">http://ieee802.org/16</a> >	
Title	MS CDMA-based BR in Non-transparent RS System under Centralized Scheduling	
Date Submitted	2006-03-15	
Source(s)	<p>Kanchei (Ken) Loa, Yi-Hsueh Tsai, Chih-Chiang Hsieh, Yung-Ting Lee, Hua-Chiang Yin, Shiann-Tsong Sheu, Frank C.D. Tsai, Youn-Tai Lee, Heng- lang Hsu Institute for Information Industry 8F., No. 218, Sec. 2, Dunhua S. Rd., Taipei City, Taiwan.</p> <p>Masato Okuda Fujitsu Laboratories LTD. Kamikodanaka 4-1-1, Nakahara-ku Kawasaki, Japan. 211-8588</p> <p>Yousuf Saifullah, Shashikant Maheshwari Nokia 6000 Connection Drive, Irving, TX</p> <p>Kerstin Johnsson Intel Corp. 2200 Mission College Blvd. Santa Clara, CA 95054</p> <p>Changkyoon Kim Samsung Thales San 12-1, Nongseo-Dong, Giheung- Gu, Yongin-City, Gyeonggi-Do, Korea 446- 712</p> <p>Chie Ming Chou ITRI/NCTU</p> <p>[add co-authors here]</p>	<p>Voice: +886-2-2739-9616 <a href="mailto:loa@iii.org.tw">loa@iii.org.tw</a></p> <p>Voice: +81-44-754-2811 Fax: +81-44-754-2786 <a href="mailto:okuda@jp.fujitsu.com">okuda@jp.fujitsu.com</a></p> <p>Voice: 972 894 5000 <a href="mailto:yousuf.saifullah@nokia.com">yousuf.saifullah@nokia.com</a> <a href="mailto:shashikant.maheshwari@nokia.com">shashikant.maheshwari@nokia.com</a></p> <p>Voice: +1-408-653-9651 <a href="mailto:kerstin.johnsson@intel.com">kerstin.johnsson@intel.com</a></p> <p>Voice: +82 31 280 9919 Fax: +82 31 280 1620 <a href="mailto:changkyoon.kim@samsung.com">changkyoon.kim@samsung.com</a></p> <p><a href="mailto:chieming@itri.org.tw">chieming@itri.org.tw</a></p>
Re:	IEEE 802.16j-07/007r2: "Call for Technical Comments and Contributions regarding IEEE Project 802.16j"	
Abstract	This contribution proposes text modification on 6.3.6.7.2.1 of the baseline working document IEEE 802.16j-06/026r2	
Purpose	Discussion and Adoption in IEEE 802.16j	

Notice	This document has been prepared to assist IEEE 802.16. It is offered as a basis for discussion and is not binding on the contributing individual(s) or organization(s). The material in this document is subject to change in form and content after further study. The contributor(s) reserve(s) the right to add, amend or withdraw material contained herein.
Release	The contributor grants a free, irrevocable license to the IEEE to incorporate material contained in this contribution, and any modifications thereof, in the creation of an IEEE Standards publication; to copyright in the IEEE's name any IEEE Standards publication even though it may include portions of this contribution; and at the IEEE's sole discretion to permit others to reproduce in whole or in part the resulting IEEE Standards publication. The contributor also acknowledges and accepts that this contribution may be made public by IEEE 802.16.
Patent Policy and Procedures	The contributor is familiar with the IEEE 802.16 Patent Policy and Procedures < <a href="http://ieee802.org/16/ipr/patents/policy.html">http://ieee802.org/16/ipr/patents/policy.html</a> >, including the statement "IEEE standards may include the known use of patent(s), including patent applications, provided the IEEE receives assurance from the patent holder or applicant with respect to patents essential for compliance with both mandatory and optional portions of the standard." Early disclosure to the Working Group of patent information that might be relevant to the standard is essential to reduce the possibility for delays in the development process and increase the likelihood that the draft publication will be approved for publication. Please notify the Chair < <a href="mailto:chair@wirelessman.org">mailto:chair@wirelessman.org</a> > as early as possible, in written or electronic form, if patented technology (or technology under patent application) might be incorporated into a draft standard being developed within the IEEE 802.16 Working Group. The Chair will disclose this notification via the IEEE 802.16 web site < <a href="http://ieee802.org/16/ipr/patents/notices">http://ieee802.org/16/ipr/patents/notices</a> >.

# MS CDMA-based BR in Non-transparent RS System under Centralized Scheduling

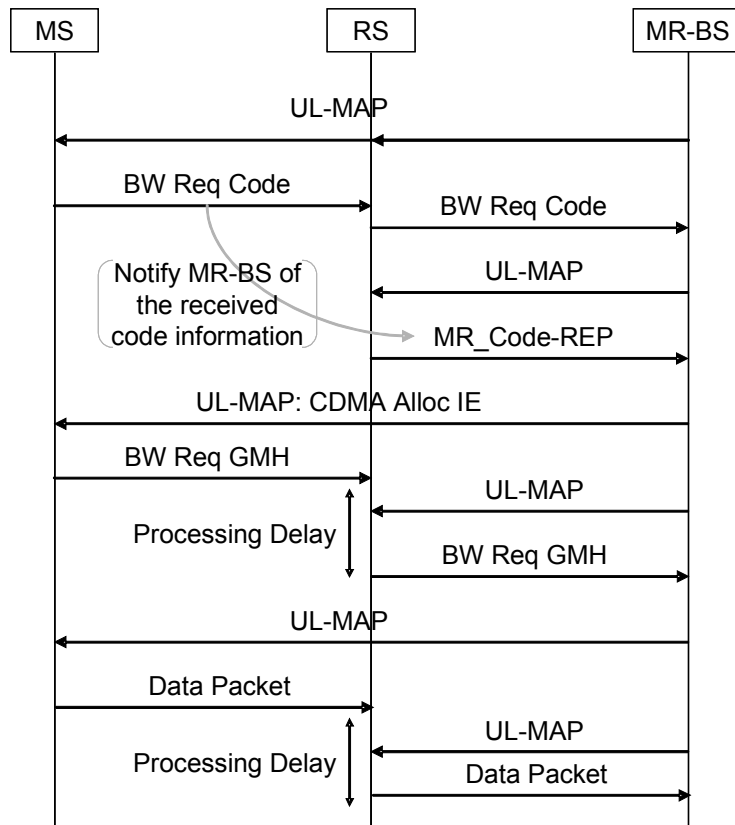
## Introduction

This contribution describes the specific changes to 6.3.6.7.2.1 of the baseline working document IEEE 802.16j-06/026r2.

## Proposed Text Modification

*Add the following sentence and Figure after the second sentence of the third paragraph in 6.3.6.7.2.1*

Thus, when an RS receives a BW request CDMA ranging code from one of its SSs, it shall send the appropriate RS CDMA ranging code toward the MR-BS indicating that one of its SSs is requesting to forward a BW request header to the MR-BS. When an intermediate RS along the path to the MR-BS receives an RS CDMA ranging code, it shall simply relay this code in the uplink direction. Upon receiving an RS CMDA ranging code, the MR-BS shall respond by ~~creating the appropriate downlink and uplink allocations~~ allocating uplink bandwidth to each RS along the relay path from the RS specified by the code for the purpose of forwarding an MR\_Code-REP message containing information about the CDMA ranging code received from the SS. The MR-BS shall use the CMDA ranging code and transmit region information in the MR\_Code-REP to create a CDMA\_allocation\_IE that allocates bandwidth on which the SS can forward a BW request header to the MR-BS. Please see the figure <XXX>.



[Figure <XXX> BW request/allocation signaling in centralized scheduling](#)