

# MS Intra-Cell FBSS

## IEEE 802.16 Presentation Submission Template (Rev. 8.3)

### Document Number:

IEEE C802.16j-07/220

### Date Submitted:

2007-03-05

### Source:

Hang Zhang,,Peiyong Zhu, Wen Tong, Gamini Senarath

David Steer, Derek Yu, Mark Naden, G.Q. Wang

Voice: +16137631315

Nortel

3500 Carling Avenue

E-mail: [pyzhu@nortel.com](mailto:pyzhu@nortel.com)

Ottawa, Ontario K2H 8E9

### Venue:

Orlando, FL, USA

### Base Document:

P802.16j Baseline Document (IEEE 802.16j-06/026)

### Purpose:

To discuss and adopt the proposal

### Notice:

This document has been prepared to assist IEEE 802.16. It is offered as a basis for discussion and is not binding on the contributing individual(s) or organization(s). The material in this document is subject to change in form and content after further study. The contributor(s) reserve(s) the right to add, amend or withdraw material contained herein.

### Release:

The contributor grants a free, irrevocable license to the IEEE to incorporate material contained in this contribution, and any modifications thereof, in the creation of an IEEE Standards publication; to copyright in the IEEE's name any IEEE Standards publication even though it may include portions of this contribution; and at the IEEE's sole discretion to permit others to reproduce in whole or in part the resulting IEEE Standards publication. The contributor also acknowledges and accepts that this contribution may be made public by IEEE 802.16.

### IEEE 802.16 Patent Policy:

The contributor is familiar with the IEEE 802.16 Patent Policy and Procedures <<http://ieee802.org/16/ipr/patents/policy.html>>, including the statement "IEEE standards may include the known use of patent(s), including patent applications, provided the IEEE receives assurance from the patent holder or applicant with respect to patents essential for compliance with both mandatory and optional portions of the standard." Early disclosure to the Working Group of patent information that might be relevant to the standard is essential to reduce the possibility for delays in the development process and increase the likelihood that the draft publication will be approved for publication. Please notify the Chair <<mailto:chair@wirelessman.org>> as early as possible, in written or electronic form, if patented technology (or technology under patent application) might be incorporated into a draft standard being developed within the IEEE 802.16 Working Group. The Chair will disclose this notification via the IEEE 802.16 web site <<http://ieee802.org/16/ipr/patents/notices>>.

# Introduction

- An RS, after network entry, shall be associated with a M-MR-BS. The RS may communicate with the MR-BS directly or via other RS(s)
- For throughput enhancement application scenario,
  - an RS can be configured to transmit the same preamble as the MR-BS (scenario 1); or
  - an RS can be configured to transmit different preamble from MR-BS (scenario 2)
- In scenario 2, the system capacity is expected to over perform that of the scenario 1 due to space multiplexing gain
- For scenario 2, however, more frequent intra-cell hand over across RSs may cause addition delay and signaling overhead
- In this contribution, we propose the coordinated operation among MR-BS and its RSs to enable fast MS intra-cell FBSS

# Proposal -1

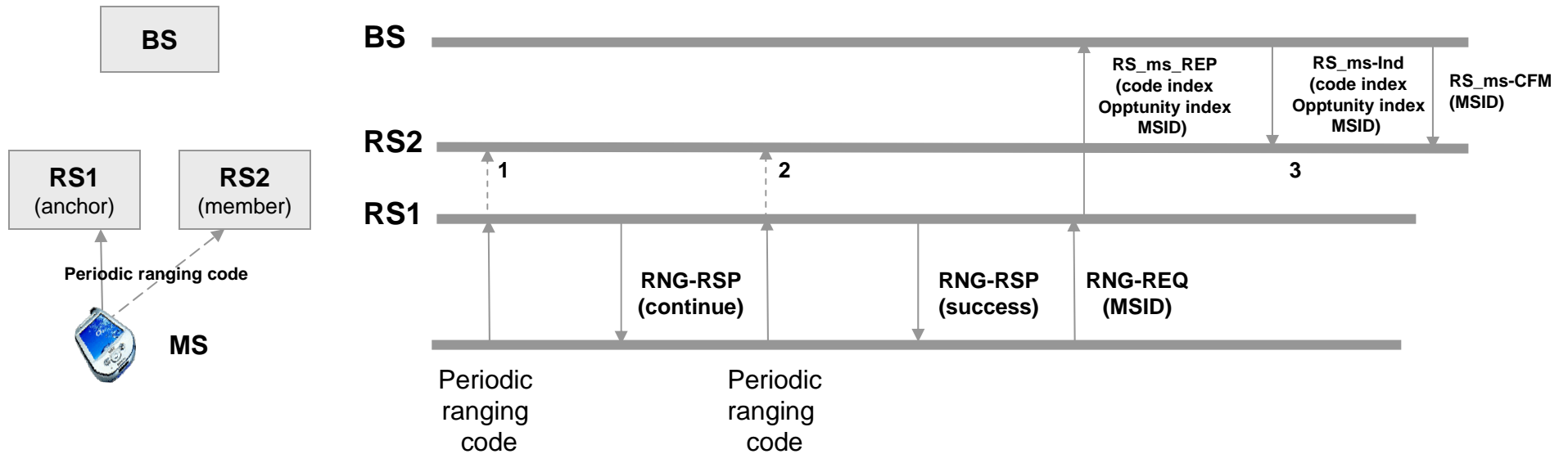
- Introduce common periodic ranging region
  - MMRBS and all associated RSs allocate the same UL resource as the periodic ranging region. This region is called as common periodic ranging region
  - MMRBS and all associated RSs monitor the common periodic ranging region
  - Ranging information of MS can thus be recorded by RSs which captured the code transmission
  - After a switch of a MS, the target BS has the previous recorded ranging information and use this information to determine whether further ranging is required and speed up the further ranging procedure
- Introduce synchronized CQICH assignment
  - MS macro-diversity set is created and maintained as current design defined by 802.16e
  - The CQICH assigned by anchor station shall be monitored by all member station in the set (i.e., all member stations, other than the anchor station, shall not assign the same resource to other MS); If this is not possible, each member shall reserve a CQICH resource for each of MS who select the RS as a member of its MD set
    - The switching indication sent by a MS can be monitored by both anchor station and the target station
    - The procedure for the anchor station to acquire the information on CQICH assignment by the target station is avoided
- Benefit
  - A faster FBSS procedure can be expected by implement the above design

## Proposal -2

- MAC management messages are introduced to enable the coordinated operation
  - RS\_ms\_REP used by RS to report to MMRBS the information related to MS's operation
    - The reception of periodic ranging code reception
    - CQICH assignment info
    - Switching indication reception
    - Etc
  - RS\_ms\_Ind used by MMRBS to provide indication to RS regarding the support of MS operation
    - Tracking ranging info of MS
    - CQICH assignment info
    - Etc
  - RS\_ms\_CFM used by RS to confirm the reception of RS\_ms\_IND

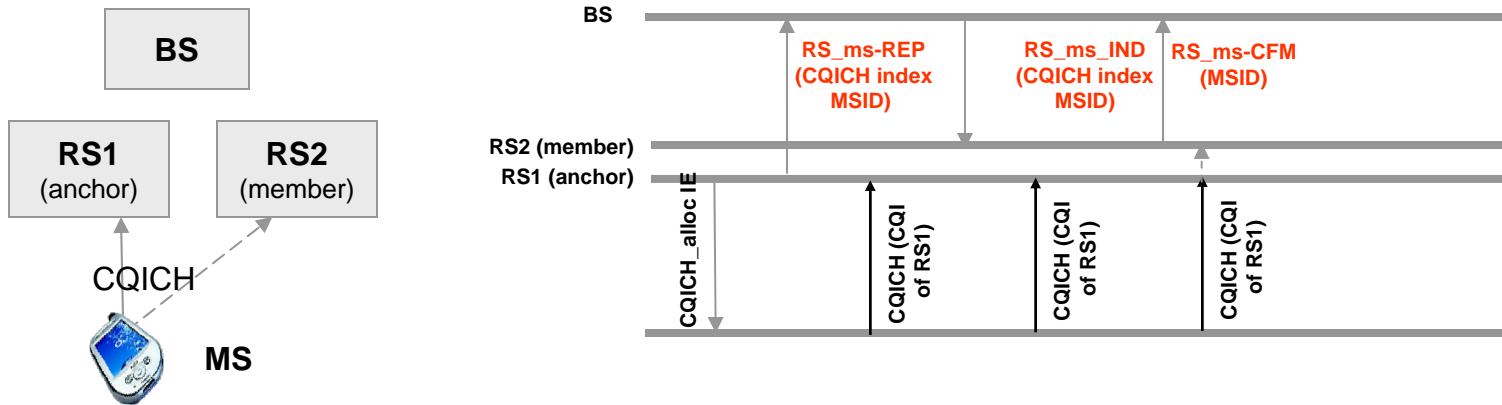
# Operation Illustration - 1

- Ranging information tracking by member station
  - At time 1 and 2, RS2 records the reception info of code
  - At time 3, MR-BS inform all member station in MS's MD set the sender MS of the code and RS2 create its record for this MS

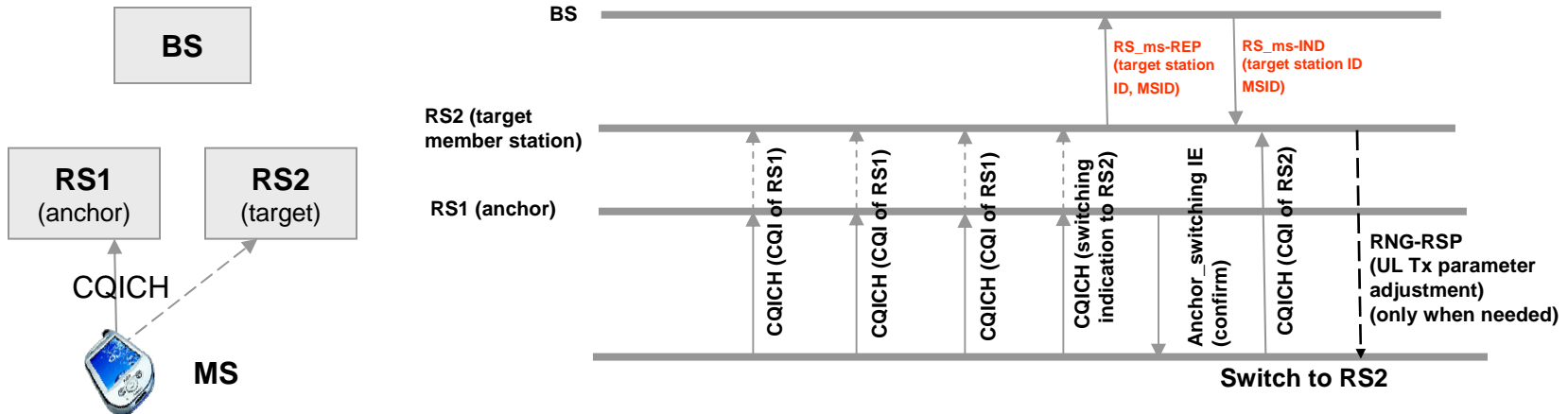


# Operation Illustration - 2

- Fast station switching procedure
  - Synchronized CQICH assignment



## Switching procedure



# Summary

- By implementing the common periodic ranging region, the delay caused by MS's ranging to the target station after switching can be minimized
- By implementing the synchronized CQICH among member stations, the delay caused by the CQICH resource allocation by target station can be minimized
- The intra-cell switching procedure can be estimated as fast as 3-4 frames

# Proposed Text Changes

The following MAC management messages are introduced to enable the coordinated operation

(1) RS\_ms\_REP used by RS to report to MR-BS the information related to MS's operation

- The reception of periodic ranging code reception
- CQICH assignment info
- Switching indication reception

Etc

(2) RS\_ms\_Ind used by MR-BS to provide indication to RS regarding the support of MS operation

- Tracking ranging info of MS
- CQICH assignment info

Etc

(3) RS\_ms\_CFM used by RS to confirm the reception of RS\_ms\_IND  
Message structure TBD.