
IEEE 802.16 Broadband Wireless Access Working Group <<http://ieee802.org/16>>

Title **MS context release indication**

Date Submitted **2007-03-05**

Source(s) Hyunjeong Kang, Sungjin Lee, [mail to: hyunjeong.kang@samsung.com]
 Hyoung Kyu Lim, Jungje Son,
 Panyuh Joo
 Samsung Electronics

Rakesh Taori [mail to: rakesh.taori@samsung.com]
 Samsung Advanced Institute of
 Technology

Re: Call for technical proposals regarding IEEE project P802.16j

Abstract This contribution proposes the scheme with which a serving MR-BS informs an old access RS of the release of MS context information.

Purpose Discussion and Adoption in IEEE 802.16j

Notice This document has been prepared to assist IEEE 802.16. It is offered as a basis for discussion and is not binding on the contributing individual(s) or organization(s). The material in this document is subject to change in form and content after further study. The contributor(s) reserve(s) the right to add, amend or withdraw material contained herein.

Release The contributor grants a free, irrevocable license to the IEEE to incorporate material contained in this contribution, and any modifications thereof, in the creation of an IEEE Standards publication; to copyright in the IEEE's name any IEEE Standards publication even though it may include portions of this contribution; and at the IEEE's sole discretion to permit others to reproduce in whole or in part the resulting IEEE Standards publication. The contributor also acknowledges and accepts that this contribution may be made public by IEEE 802.16.

Patent Policy and Procedures The contributor is familiar with the IEEE 802.16 Patent Policy and Procedures <<http://ieee802.org/16/ipr/patents/policy.html>>, including the statement "IEEE standards may include the known use of patent(s), including patent applications, provided the IEEE receives assurance from the patent holder or applicant with respect to patents essential for compliance with both mandatory and optional portions of the standard." Early disclosure to the Working Group of patent information that might be relevant to the standard is essential to reduce the possibility for delays in the development process and increase the likelihood that the draft publication will be approved for publication. Please notify the Chair <<mailto:chair@wirelessman.org>> as early as possible, in written or electronic form, if patented technology (or technology under patent application) might be incorporated into a draft standard being developed within the IEEE 802.16 Working Group. The Chair will disclose this notification via the IEEE 802.16 web site <<http://ieee802.org/16/ipr/patents/notices>>.

MS context release indication

Hyunjeong Kang, Sungjin Lee, Hyoung Kyu Lim, Jungje Son, Panyuh Joo
Samsung Electronics

Rakesh Taori
Samsung Advanced Institute of Technology

Introduction

This contribution proposes handover signals to inform an old access RS that MS has successfully attached itself to a new access station and make the RS release MS context information if it maintains the information.

In the current 802.16e, serving BS releases MS context information after the expiration of Resource retain timer. Regardless of Resource retain timer, upon receiving the MS Network Attachment signal from a new serving BS, the old serving BS shall discard MAC context and MAC PDUs associated with the MS, if it has not already done so.

Similarly in 802.16j, RS as an old access station may maintain MS context information such as MS CIDs while an MS moves to another access station. After the MS attaches to the new access station or the expiration of Resource retain timer negotiated between serving MR-BS and MS, the old access RS does not need to retain the MS context information. So the serving MR-BS informs the old access RS of the release of MS context information if the RS maintains it. Upon receiving a signal of MS context release, the old access RS shall release the saved MAC context of the MS.

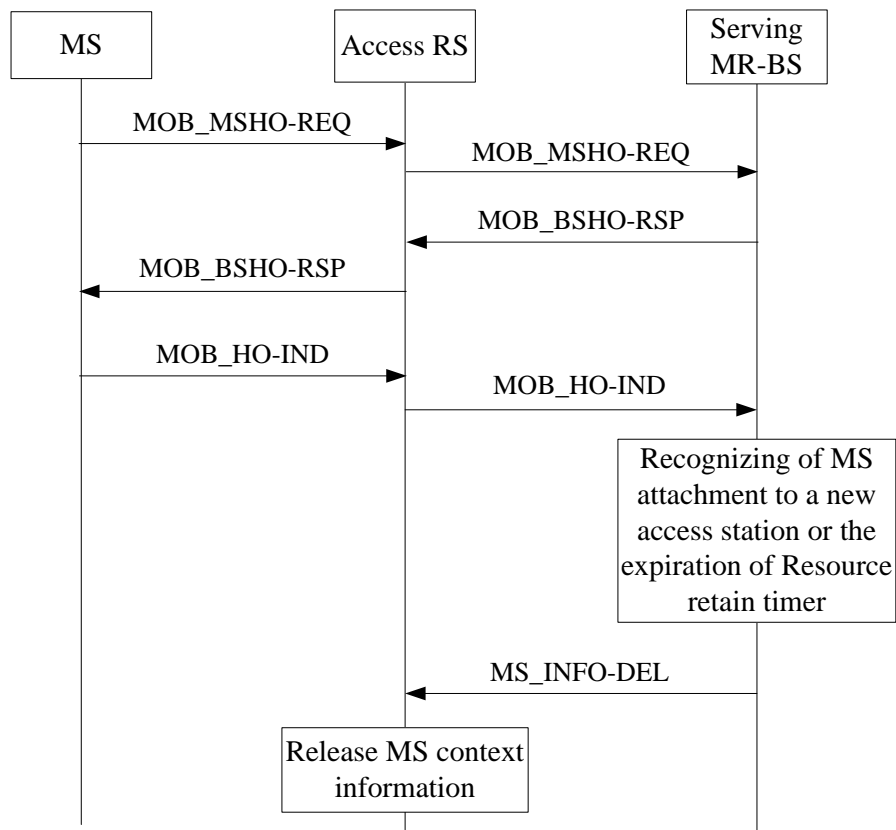


Figure 1 an example of MS context release in old access RS

Proposed Text Change

[Insert the followings at the end of section 6.3.22.5.1 in page 30]

If a serving MR-BS recognizes that MS attaches to a new access station or Resource retain timer expires, and the MS's old access station is an RS which is controlled by the MR-BS, the MR-BS may send the MS_INFO-DEL message to make the RS discard MS context information. Upon receiving the MS_INFO-DEL message, the RS shall remove the MS context information.

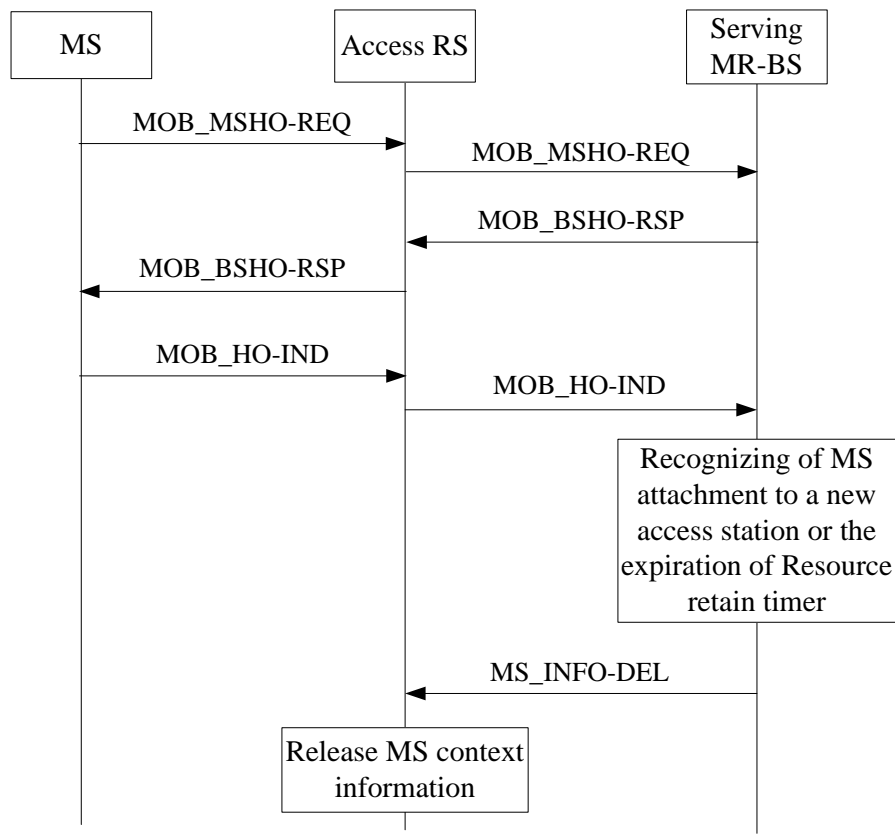


Figure xx: Handover procedure involving RS with centralized HO control from MR-BS

[Insert the followings after section 6.3.2.3.64 at page 13]

6.3.2.3.xx MS Context Information Delete (MS_INFO-DEL) message

An MR-BS transmits a MS_INFO-DEL message to an RS which is an old access station and controlled by the MR-BS when the MR-BS recognizes that MS attaches to a new access station or that Resource retain timer expires.

An MR-BS shall generate MS_INFO-DEL messages in the format shown in Table x.

Table x – MS_INFO-DEL message format

<u>Syntax</u>	<u>Size</u>	<u>Notes</u>
<u>MS_INFO-DEL Message format() {</u>		
<u> Management Message Type=TBD</u>	<u>8 bits</u>	<u>=</u>
<u> MS ID</u>	<u>48 bits</u>	<u>MS MAC address</u>
<u>}</u>		