

Project	<b>IEEE 802.16 Broadband Wireless Access Working Group</b> < <a href="http://ieee802.org/16">http://ieee802.org/16</a> >	
Title	<b>Flow charts for MS Initial Ranging with Non-transparent RS (Distributed)</b>	
Date Submitted	<b>2007-07-05</b>	
Source(s)	Kanchei (Ken) Loa, Yi-Hsueh Tsai, Yung-Ting Lee, Hua-Chiang Yin, Shiann-Tsong Sheu, Youn-Tai Lee,  Institute for Information Industry 8F, No. 218, Sec. 2, Dunhua S. Rd., Taipei City 106, Taiwan  Masato Okuda  Fujitsu	Voice: +886-2-27399616 Fax: +886-2-23782328 <a href="mailto:loa@nmi.iii.org.tw">loa@nmi.iii.org.tw</a>  <a href="mailto:okuda@jp.fujitsu.com">okuda@jp.fujitsu.com</a>
Re:	IEEE 802.16j-07/019: "Call for Technical Comments Regarding IEEE Project 802.16j"	
Abstract	This contribution proposes flow charts for MS Initial Ranging with Non-transparent RS	
Purpose	Text proposal for 802.16j Baseline Document.	
Notice	<i>This document does not represent the agreed views of the IEEE 802.16 Working Group or any of its subgroups. It represents only the views of the participants listed in the "Source(s)" field above. It is offered as a basis for discussion. It is not binding on the contributor(s), who reserve(s) the right to add, amend or withdraw material contained herein.</i>	
Release	The contributor grants a free, irrevocable license to the IEEE to incorporate material contained in this contribution, and any modifications thereof, in the creation of an IEEE Standards publication; to copyright in the IEEE's name any IEEE Standards publication even though it may include portions of this contribution; and at the IEEE's sole discretion to permit others to reproduce in whole or in part the resulting IEEE Standards publication. The contributor also acknowledges and accepts that this contribution may be made public by IEEE 802.16.	
Patent Policy	The contributor is familiar with the IEEE-SA Patent Policy and Procedures: < <a href="http://standards.ieee.org/guides/bylaws/sect6-7.html#6">http://standards.ieee.org/guides/bylaws/sect6-7.html#6</a> > and < <a href="http://standards.ieee.org/guides/opman/sect6.html#6.3">http://standards.ieee.org/guides/opman/sect6.html#6.3</a> >. Further information is located at < <a href="http://standards.ieee.org/board/pat/pat-material.html">http://standards.ieee.org/board/pat/pat-material.html</a> > and < <a href="http://standards.ieee.org/board/pat">http://standards.ieee.org/board/pat</a> >.	

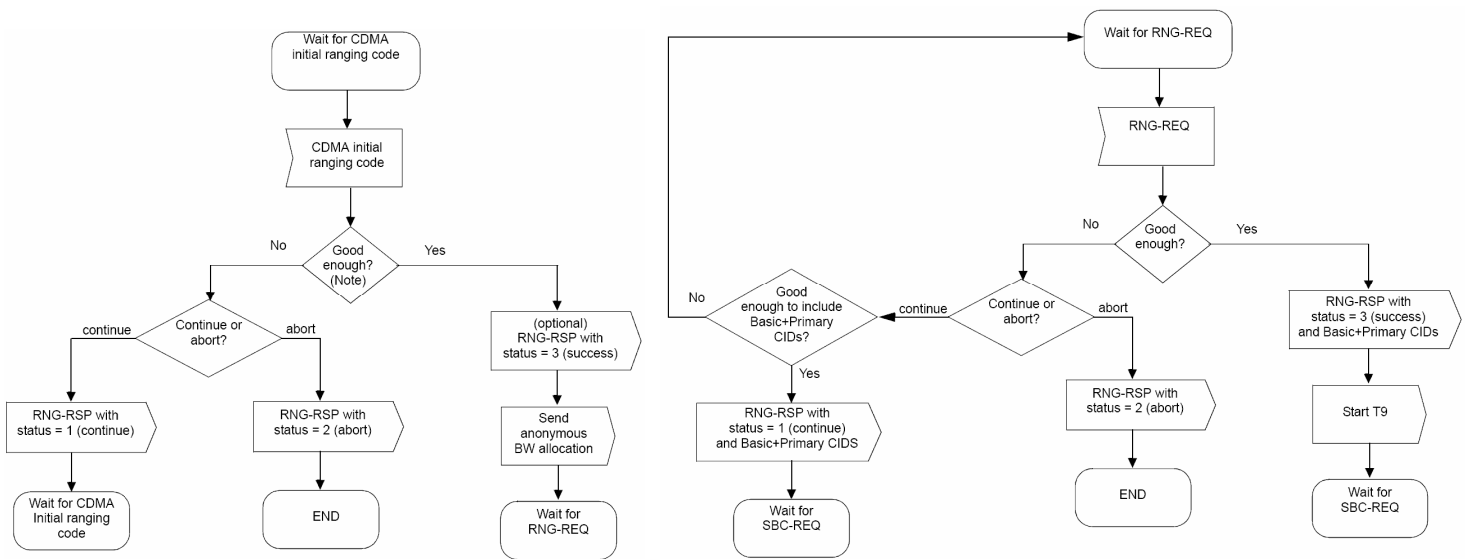
## Flow charts for MS Initial Ranging with Non-transparent RS (Distributed)

Kanchei (Ken) Loa, Yi-Hsueh Tsai, Yung-Ting Lee,  
Hua-Chiang Yin, Shiann-Tsong Sheu, Youn-Tai Lee  
Institute for Information Industry (III)

### Introduction

This contribution describes flow charts for MS initial ranging with non-transparent RS under distributed scheduling scheme based on section 6.3.9.16.2 of baseline working document IEEE 802.16j-07/026r4. In order to facilitate the incorporation of this proposal into IEEE 802.16j standard, specific changes to the baseline working document IEEE 802.16j-06/026r4 are listed below.

Moreover, the flow charts of MS network entry procedures in “P802.16Rev2/D0b” (Cor2/D4) are provided in figure 1 for reference.



(a) Handle CDMA Initial Ranging Code at BS (b) Handle RNG-REQ (OFDMA PHY only)

Figure 1 MS network entry procedures

### Text Proposal

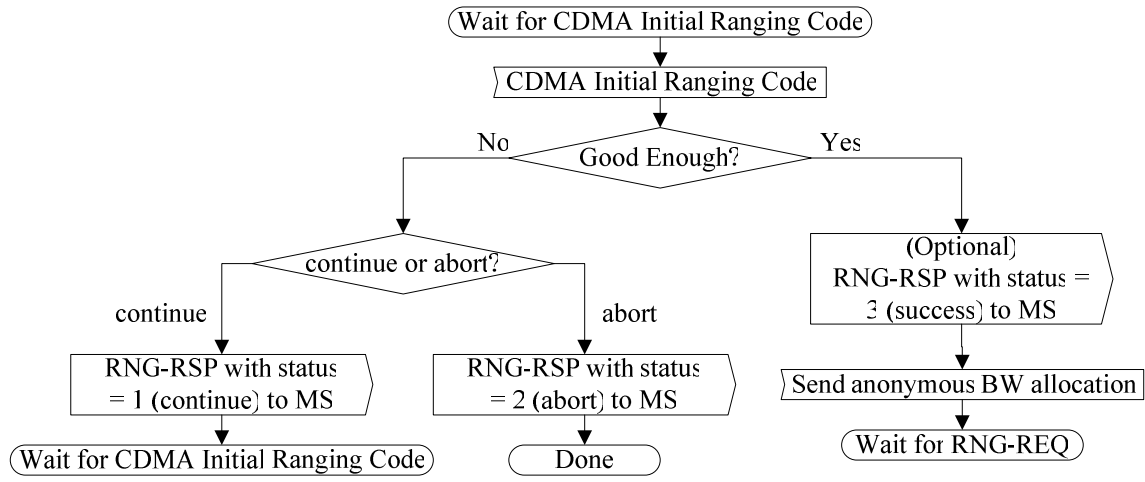
6.3.9.16.2 MS network entry procedures in non-transparent RS systems

6.3.9.16.2.2 Non-transparent RS with Distributed scheduling

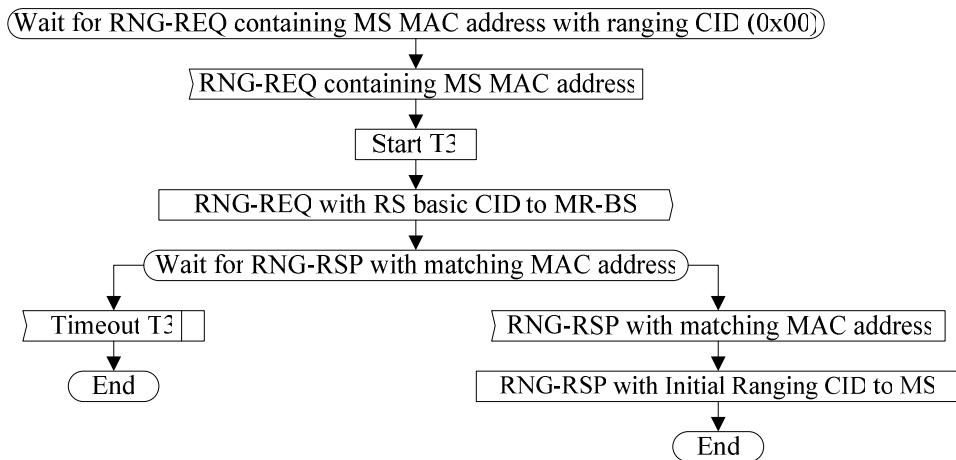
*[change subclause 6.3.9.16.2.2 in line 54 of page 85 as following index:]*

The message sequences charts (Table 199c and Table 199d) [and flow charts \(Figure 95i, Figure 95j, Figure 95k\)](#) on the following page defines the ranging and adjustment process that shall be followed by compliant RSs and MR-BSs. For CDMA ranging process between RS and MS, these details can be found in 6.3.10.3.

[Insert the following figures at the end of subclause 6.3.9.16.2.2:]



**Figure 95i Handle CDMA Initial Ranging Code at Non-transparent RS**



**Figure 95j Handle RNG-REQ at Non-transparent RS**

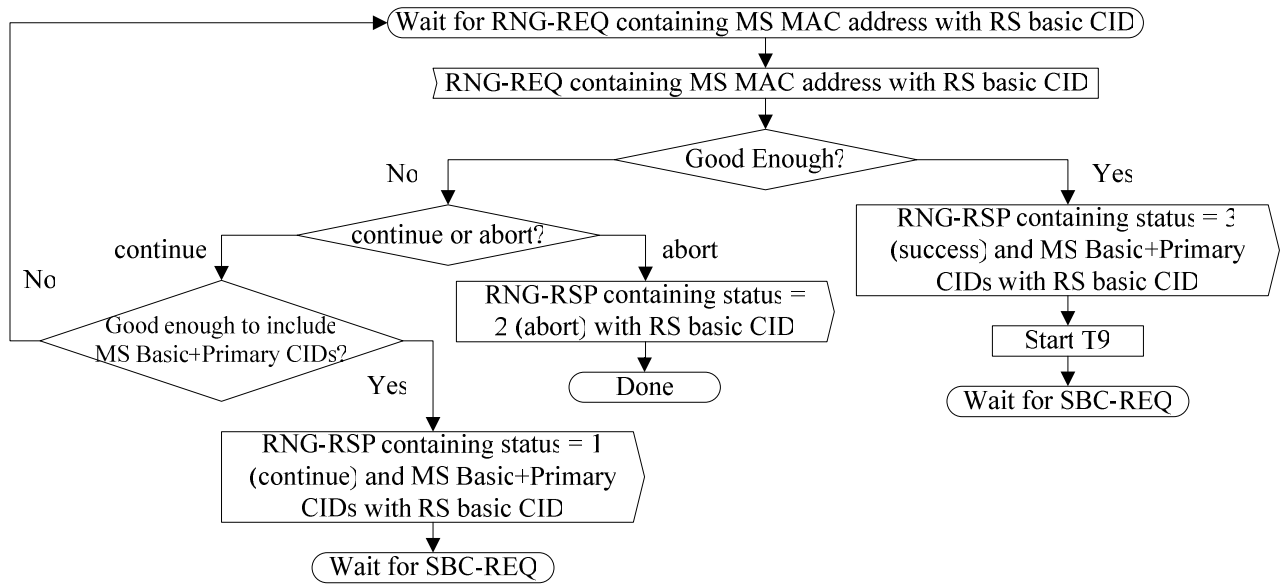


Figure 95k Handle RNG-REQ in non-transparent mode at MR-BS