

Project	IEEE 802.16 Broadband Wireless Access Working Group < http://ieee802.org/16 >	
Title	Corrections on Figures for SS ranging and network entry	
Date Submitted	2007-11-05	
Source(s)	Kanchei (Ken) Loa, Yi-Hsueh Tsai, Yung-Ting Lee, Hua-Chiang Yin, Shiann-Tsong Sheu, Youn-Tai Lee, Institute for Information Industry 8F, No. 218, Sec. 2, Dunhua S. Rd., Taipei City 106, Taiwan [add other co-authors here]	Voice: +886-2-27399616 Fax: +886-2-23782328 loa@iii.org.tw
Re:	IEEE 802.16j-07/043: "IEEE 802.16 Working Group Working Group Letter Ballot #28"	
Abstract	This contribution proposes to correct and merge the paragraphs in SS ranging and network entry in both transparent and non-transparent mode.	
Purpose	Text proposal for 802.16j Draft Document.	
Notice	<i>This document does not represent the agreed views of the IEEE 802.16 Working Group or any of its subgroups. It represents only the views of the participants listed in the "Source(s)" field above. It is offered as a basis for discussion. It is not binding on the contributor(s), who reserve(s) the right to add, amend or withdraw material contained herein.</i>	
Release	The contributor grants a free, irrevocable license to the IEEE to incorporate material contained in this contribution, and any modifications thereof, in the creation of an IEEE Standards publication; to copyright in the IEEE's name any IEEE Standards publication even though it may include portions of this contribution; and at the IEEE's sole discretion to permit others to reproduce in whole or in part the resulting IEEE Standards publication. The contributor also acknowledges and accepts that this contribution may be made public by IEEE 802.16.	
Patent Policy	The contributor is familiar with the IEEE-SA Patent Policy and Procedures: < http://standards.ieee.org/guides/bylaws/sect6-7.html#6 > and < http://standards.ieee.org/guides/opman/sect6.html#6.3 >. Further information is located at < http://standards.ieee.org/board/pat/pat-material.html > and < http://standards.ieee.org/board/pat >.	

Corrections on Figures for SS ranging and network entry

Kanchei (Ken) Loa, Yi-Hsueh Tsai, Yung-Ting Lee, Hua-Chiang Yin, Shiann-Tsong Sheu, Youn-Tai Lee
Institute for Information Industry (III)

Introduction

This contribution proposes remedy for the accepted comment #0565 (contribution IEEE C802.16j-07/459r6 Comments on SS ranging and network entry in transparent and non-transparent mode) that has some mistakes on start and stop timer.

In order to facilitate the incorporation of this proposal into IEEE 802.16j standard, specific changes to the draft standard P802.16j/D1 are listed below.

Specification Changes

[Note: The text accepted in the previous meeting (comment #0565: document IEEE C802.16j-07/459r6) are marked in “Gray”]

[Modified “the start/stop timer” in the following figures as indicated:]

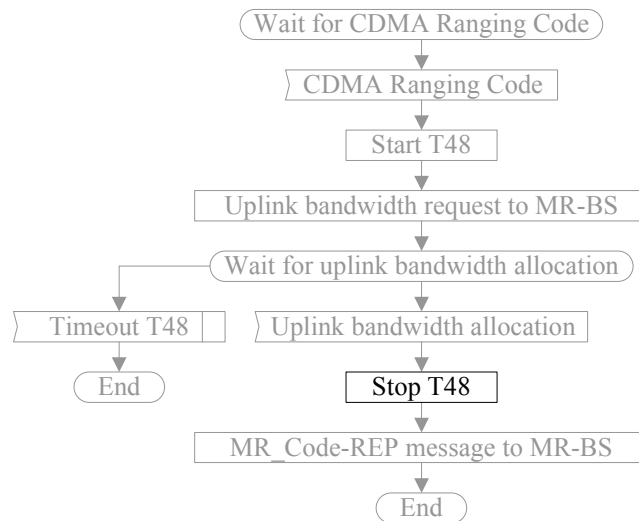


Figure 115a—Handling CDMA ranging code at a transparent RS

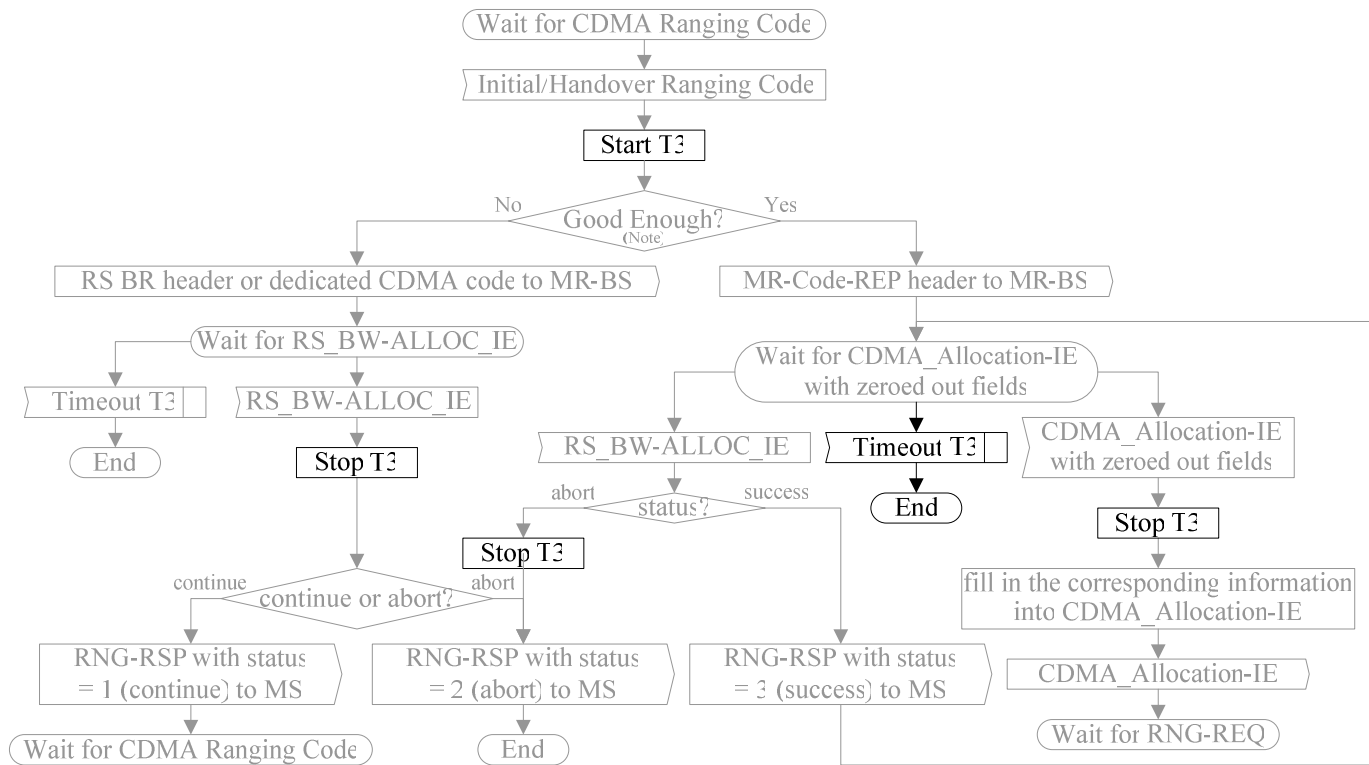


Figure 115b—Handling CDMA initial ranging code at a non-transparent RS w/unique BSID under centralized scheduling

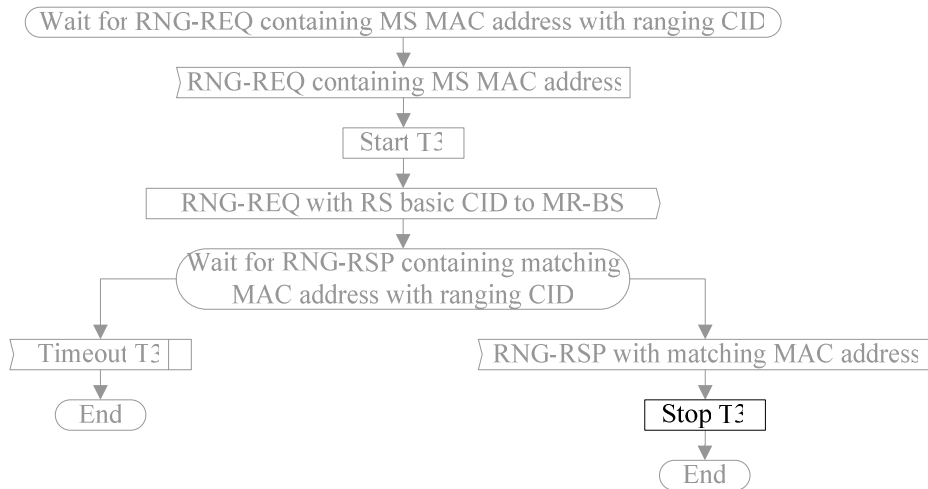


Figure 115f—Handling RNG-REQ at a transparent RS

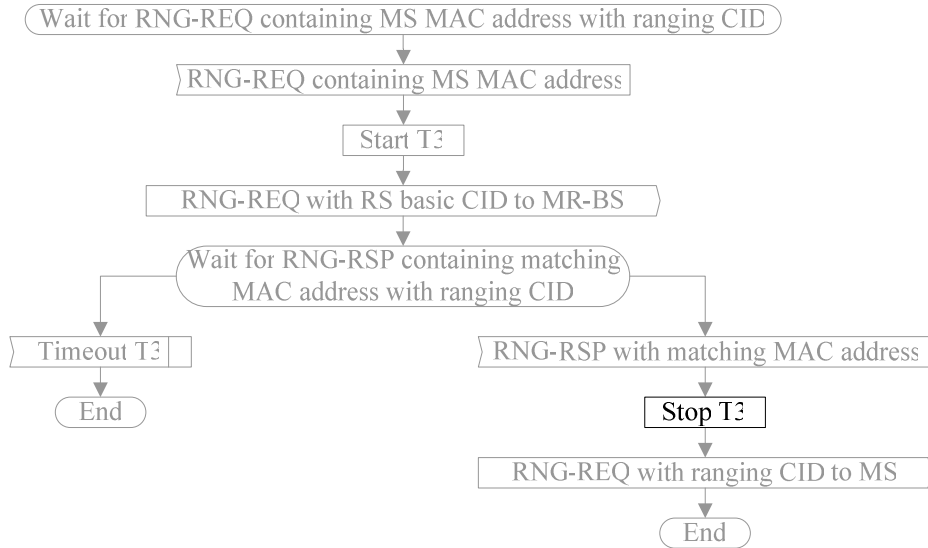


Figure 115g—Handling RNG-REQ at a non-transparent RS with a unique BSID except local CID allocation mode

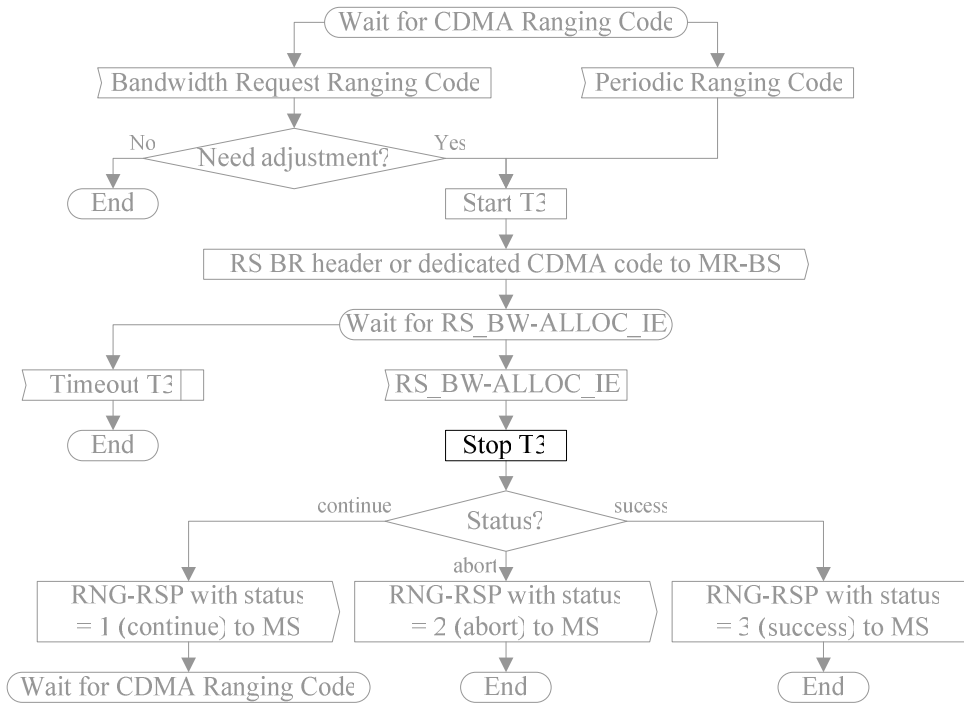


Figure 118a Handling CDMA ranging code at a non-transparent RS w/unique BSID under centralized scheduling

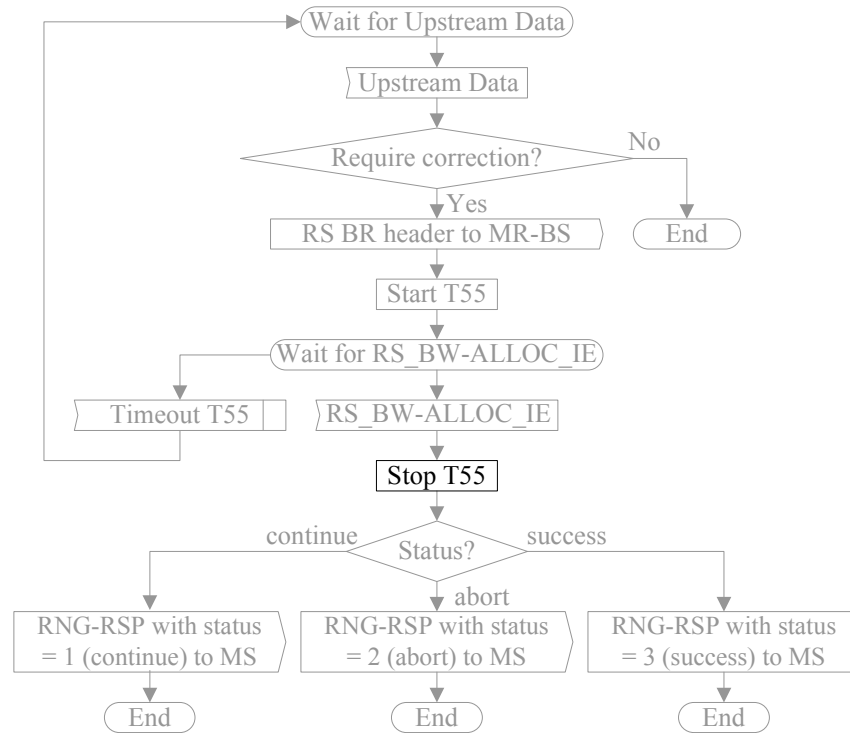


Figure 118c—SS upstream transmission adjustment at a non-transparent RS w/unique BSID under centralized scheduling