

Data forwarding and routing path setup for IEEE 802.16j multihop wireless networks

IEEE 802.16 Presentation Submission Template (Rev. 8.3)

Document Number:

S80216j-06/212

Date Submitted:

2006-11-14

Source:

Haiguang Wang, and Peng-Yong Kong
Institute for Infocomm Research
21 Heng Mui Keng Terrace, Singapore 119613

Voice: +65 6874 8525
Fax: +65 6775 5014
E-mail: wanghg@i2r.a-star.edu.sg

Venue:

IEEE 802.16 Session #46 Dallas, Texas, USA

Base Document:

None

Purpose:

Propose a data forwarding solution for the IEEE 802.16j at MAC layer. We propose to use path CID to identify each routing path between BS and a RS. It not only reduces the routing table size significantly comparing to the method of forwarding data with SS CID, but also simplify the routing management work caused by the mobility of SS/RS nodes. We also propose to use forwarding CID to identify the next hop so that ambiguity may be eliminated. To setup the routing path for data forwarding, we also propose to use path creation and ACK message to create the routing path when centralized routing scheme is used.

Notice:

This document has been prepared to assist IEEE 802.16. It is offered as a basis for discussion and is not binding on the contributing individual(s) or organization(s). The material in this document is subject to change in form and content after further study. The contributor(s) reserve(s) the right to add, amend or withdraw material contained herein.

Release:

The contributor grants a free, irrevocable license to the IEEE to incorporate material contained in this contribution, and any modifications thereof, in the creation of an IEEE Standards publication; to copyright in the IEEE's name any IEEE Standards publication even though it may include portions of this contribution; and at the IEEE's sole discretion to permit others to reproduce in whole or in part the resulting IEEE Standards publication. The contributor also acknowledges and accepts that this contribution may be made public by IEEE 802.16.

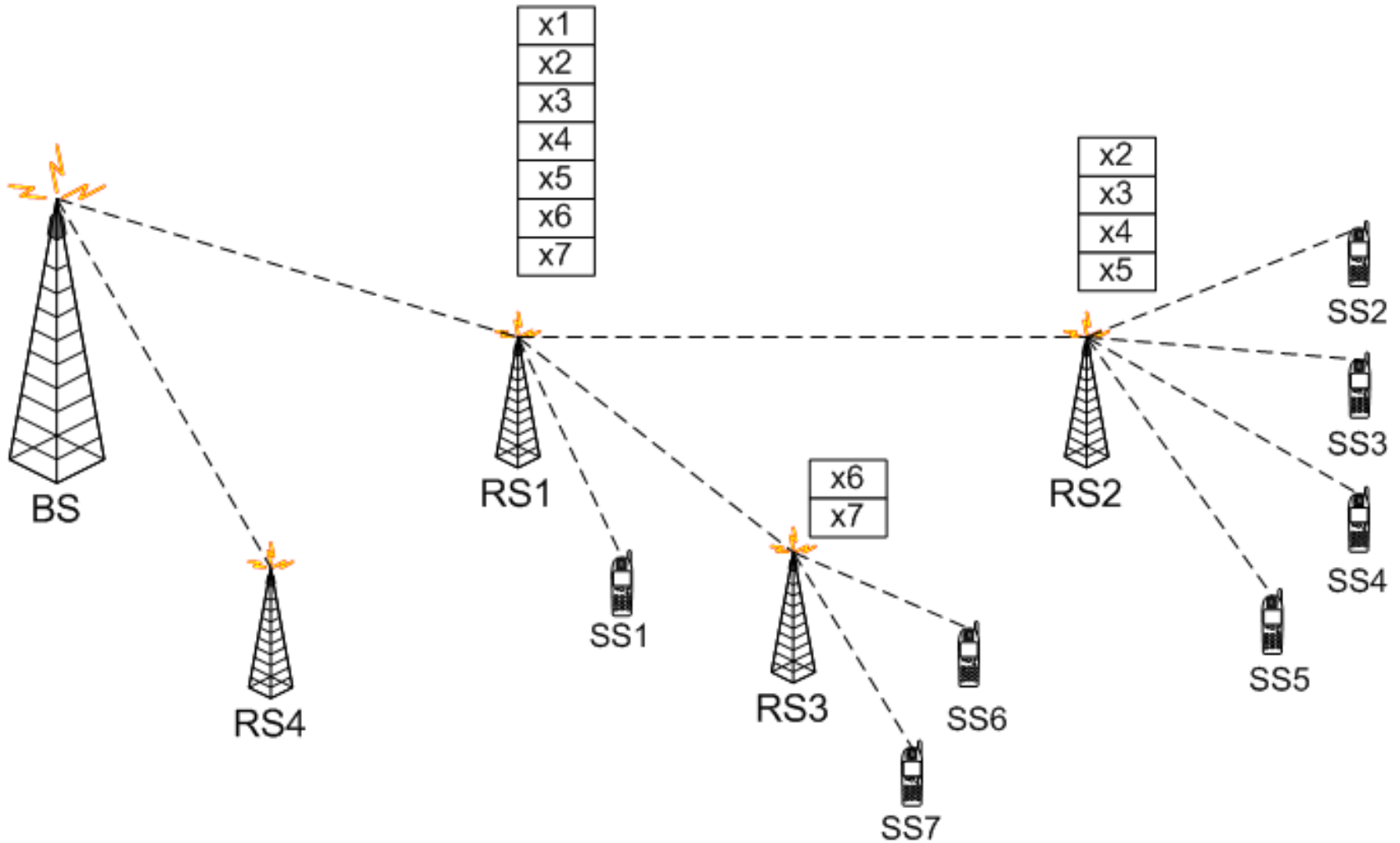
IEEE 802.16 Patent Policy:

The contributor is familiar with the IEEE 802.16 Patent Policy and Procedures <<http://ieee802.org/16/ipr/patents/policy.html>>, including the statement "IEEE standards may include the known use of patent(s), including patent applications, provided the IEEE receives assurance from the patent holder or applicant with respect to patents essential for compliance with both mandatory and optional portions of the standard." Early disclosure to the Working Group of patent information that might be relevant to the standard is essential to reduce the possibility for delays in the development process and increase the likelihood that the draft publication will be approved for publication. Please notify the Chair <<mailto:chair@wirelessman.org>> as early as possible, in written or electronic form, if patented technology (or technology under patent application) might be incorporated into a draft standard being developed within the IEEE 802.16 Working Group. The Chair will disclose this notification via the IEEE 802.16 web site <<http://ieee802.org/16/ipr/patents/notices>>.

Introduction

- Connection IDs (CID) are used to identify connections at MAC layer in 802.16 standard, including 802.16j.
- Using SS CID in routing makes the protocol complex as 802.16j relay networks are multihop wireless networks.
- We propose to use forwarding and path CIDs to simplify the protocol design.

Forwarding with SS CID



Disadvantages

- Routing table size is large.
- Overhead of control messages are high as routing control messages have to be sent when:
 - New connections at SS/BS are open.
 - Connections at SS/BS are closed.
 - SS switches to a different RS.
 - RS switches to a different RS.

Concept of Forwarding and Path CID

- Forwarding CID
 - Identify a RS.
 - Used in data forwarding and served as next hop in the MAC header. It may accelerate the data processing and eliminate the possible ambiguity.
 - Used in routing management such as routing setup and maintenance.
- Path CID
 - Identify a routing path between BS and a RS.
 - Used in both directions.

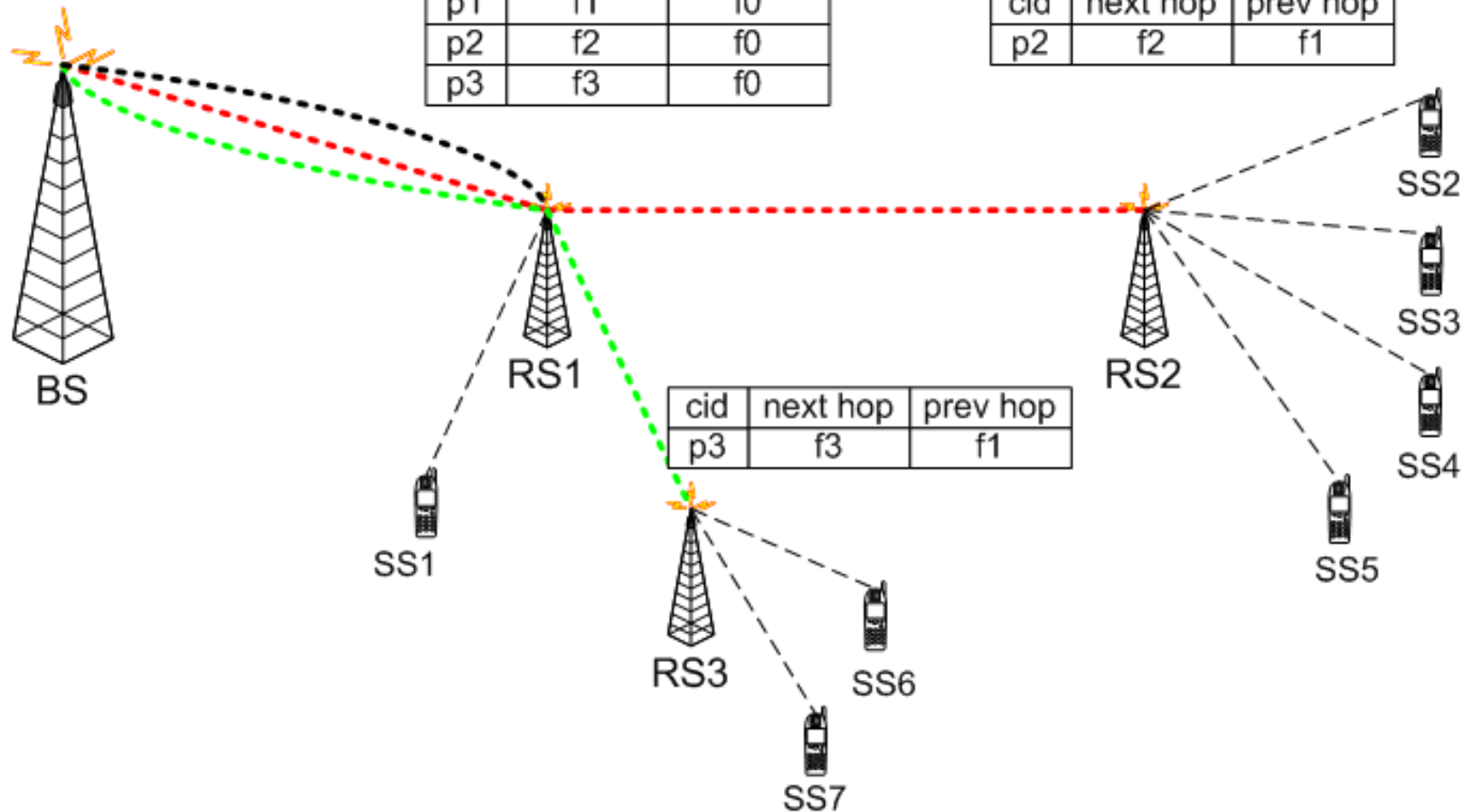
Routing with Forwarding and Path CIDs

- - - - - p1
 - . - . - p2
 - . . - . p3

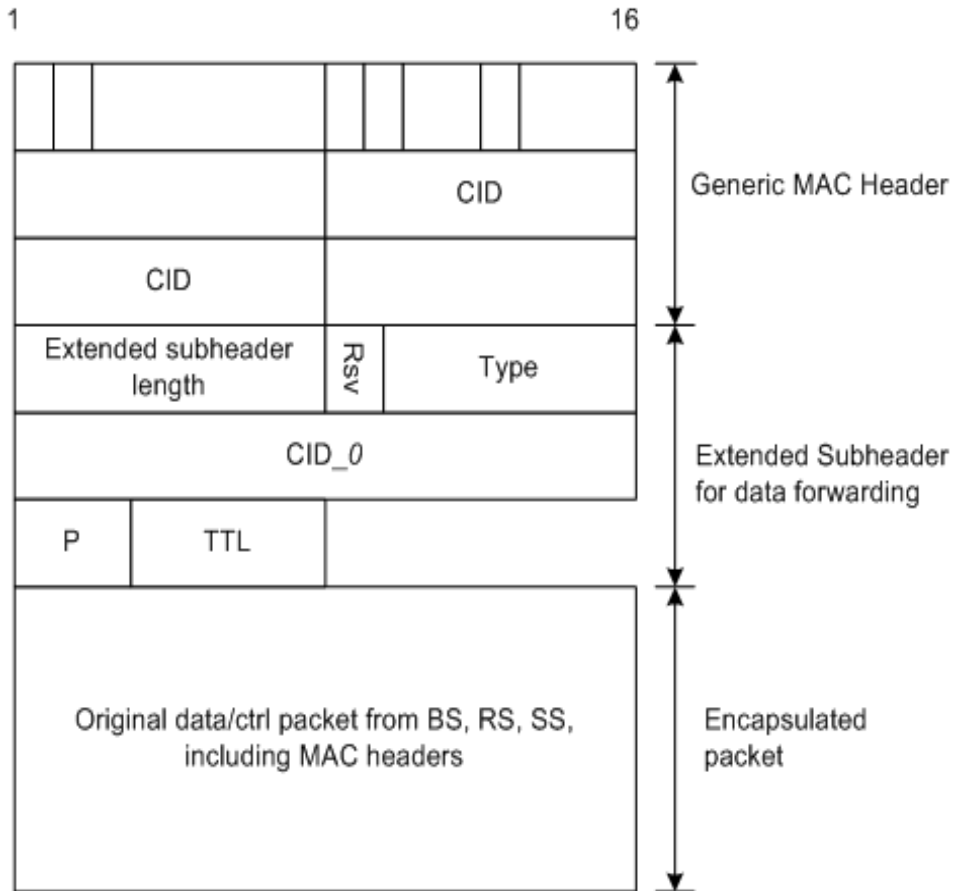
cid	next hop	prev hop
p1	f1	f0
p2	f2	f0
p3	f3	f0

cid	next hop	prev hop
p2	f2	f1

cid	next hop	prev hop
p3	f3	f1

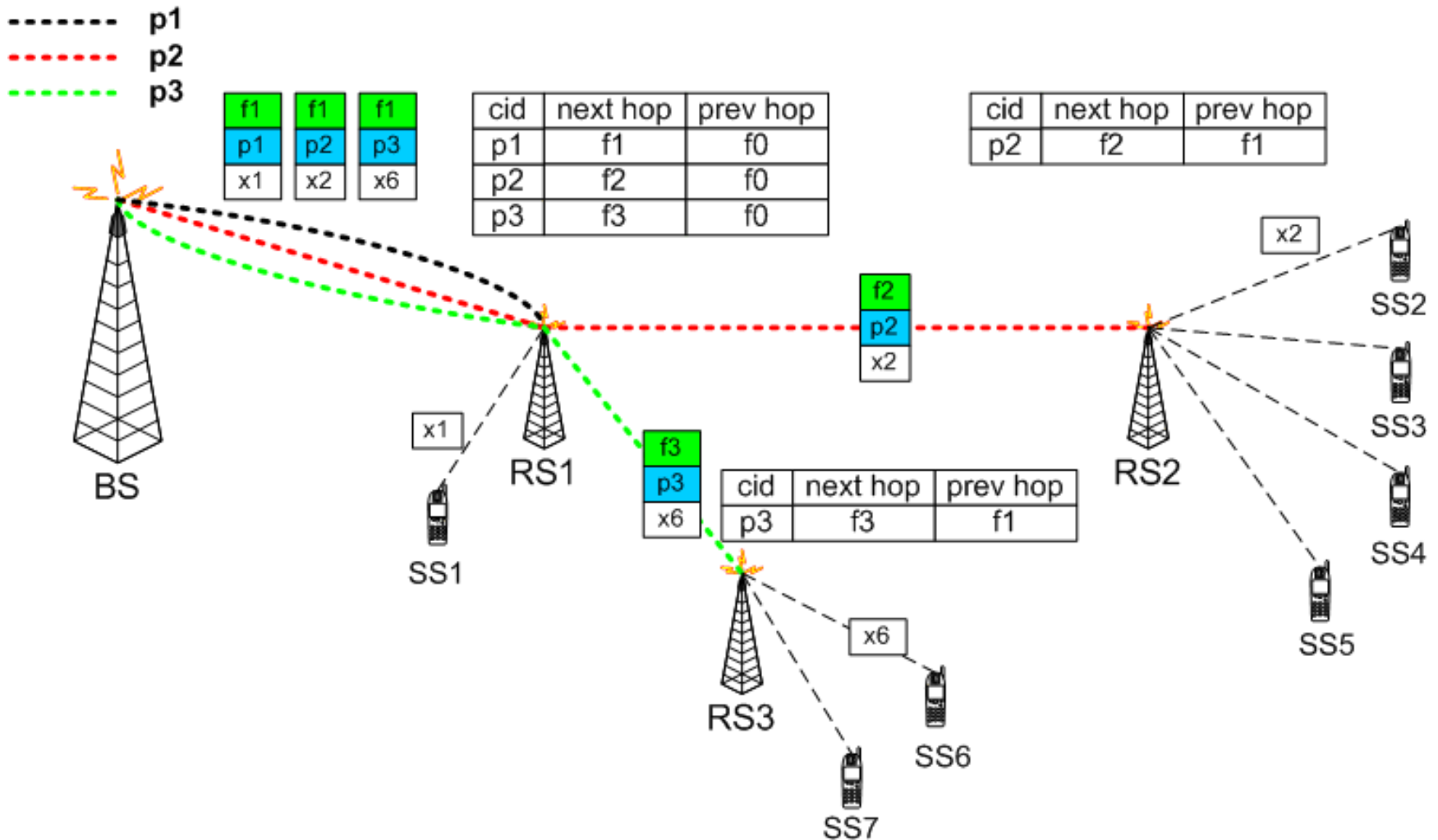


Forwarding Packet Format

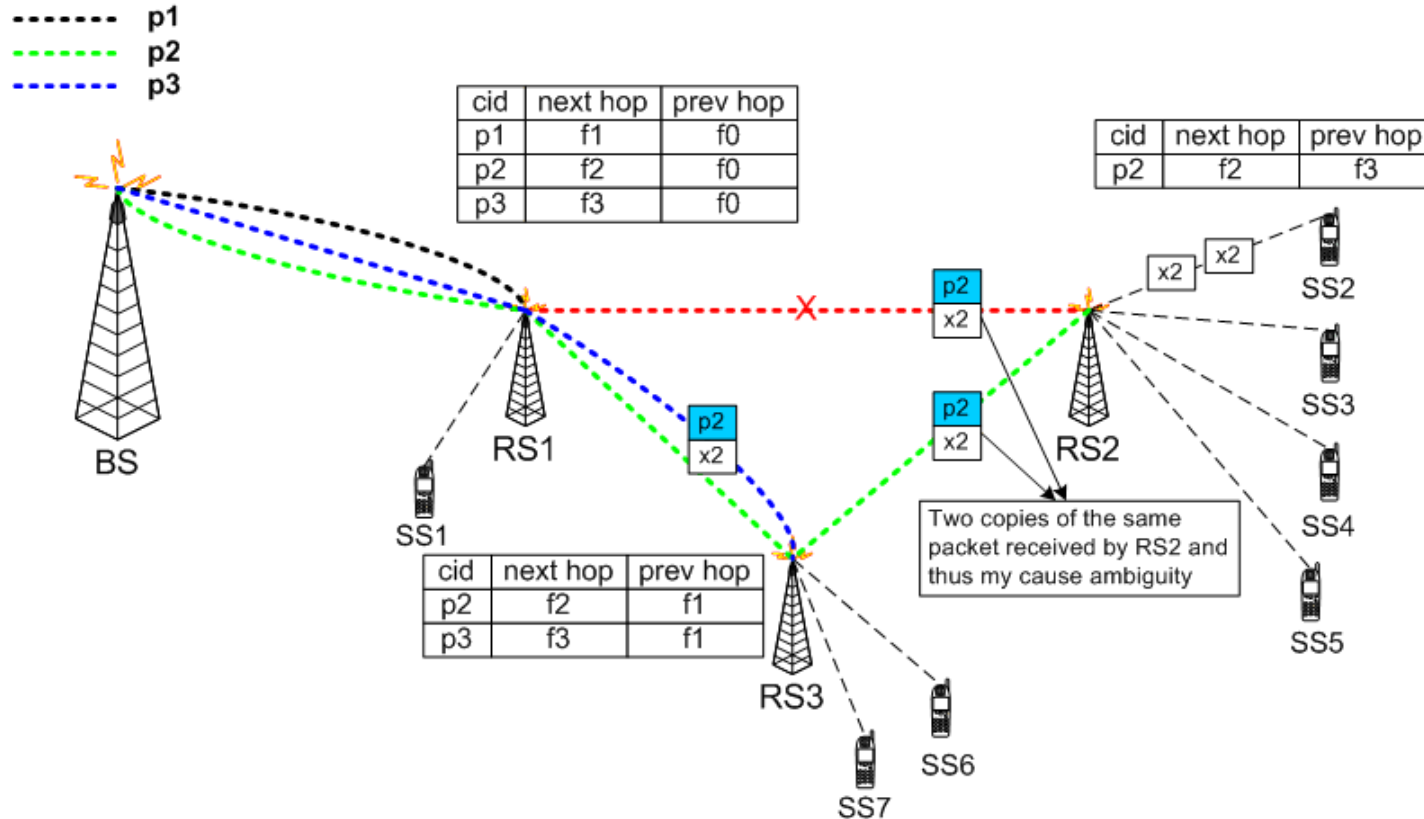


- **CID:** forwarding CID that identifies the next hop when sending.
- **Type:** 6 for DL and 5 for UL.
- **CID_0:** the path CID.
- **P:** Priority level of the packet
- **TTL:** time-to-live value.

Example of Data Forwarding



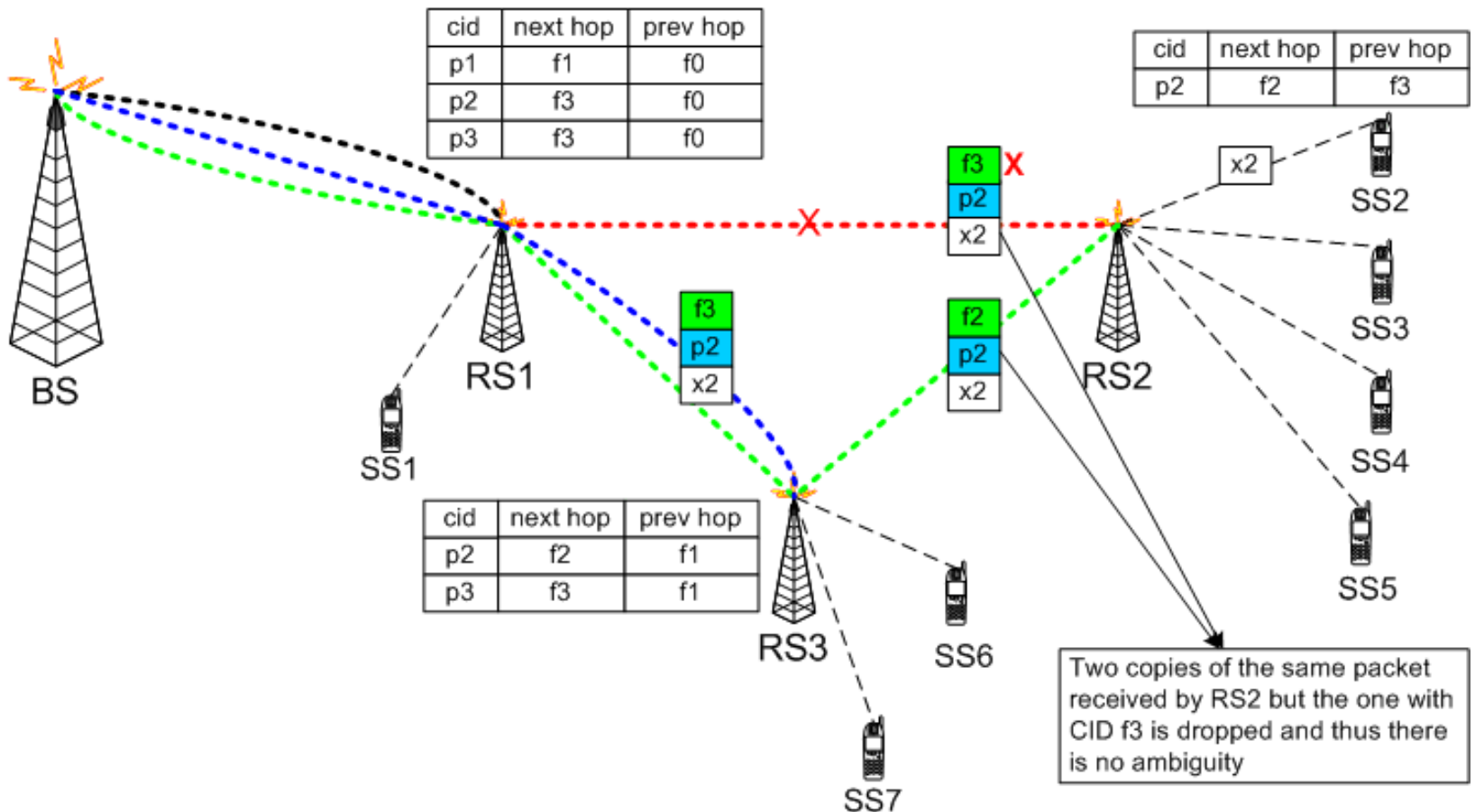
Ambiguity may be Caused with Path CID only Forwarding Method



- To avoid the ambiguity, DL-MAP has to be checked with every received packet given the path CID is in its routing table.

Forwarding CID helps in Eliminating the Ambiguity

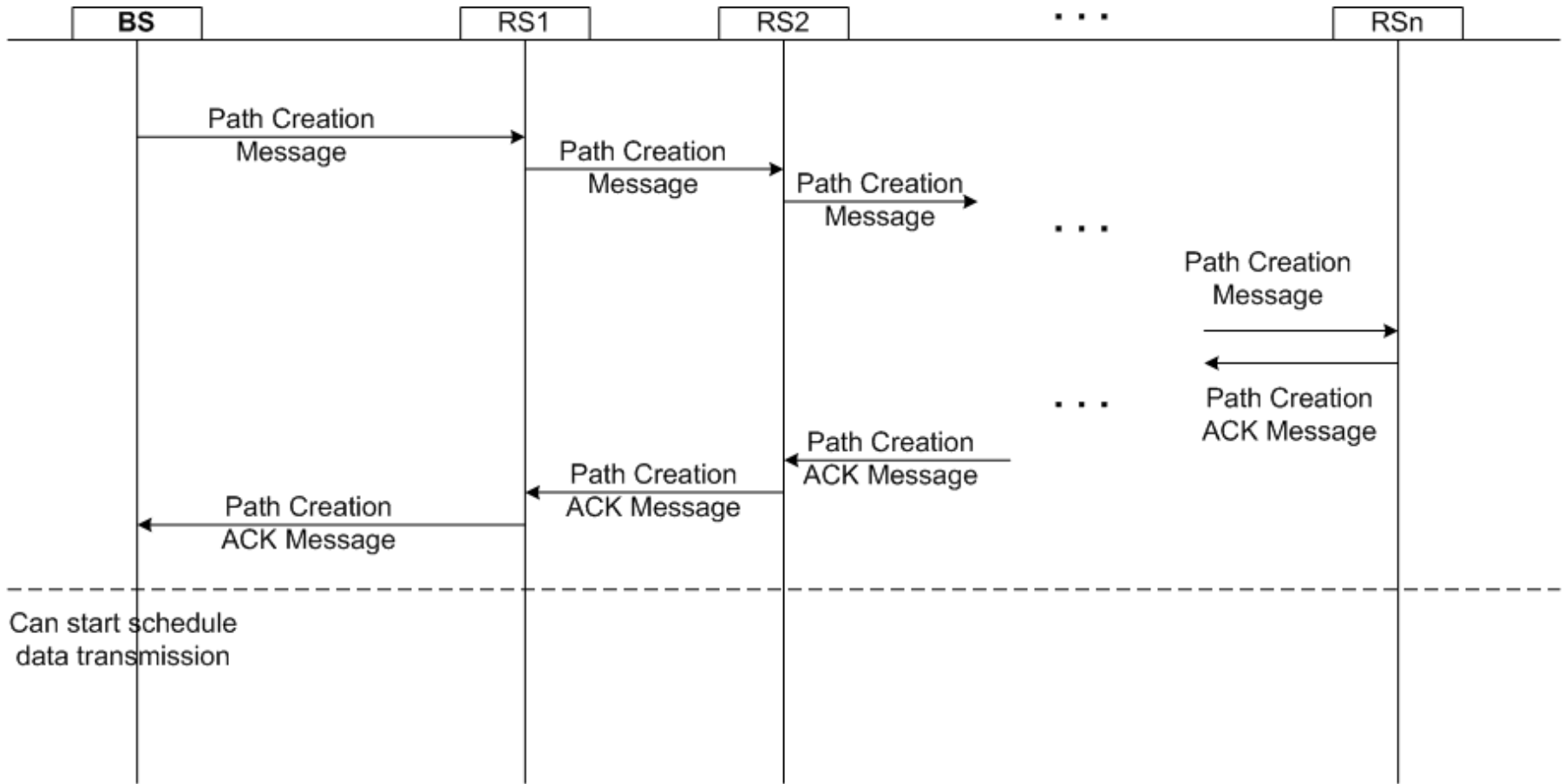
- p1
- p2
- p3



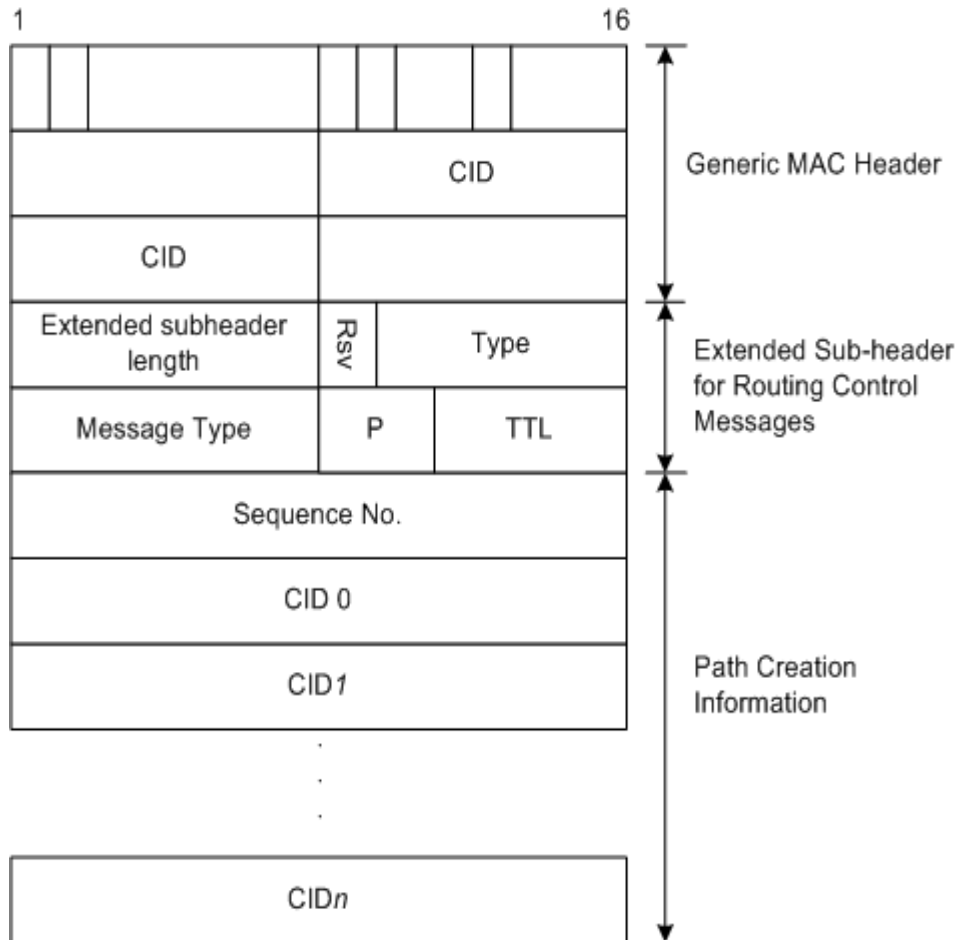
Path Setup/Creation

- We consider centralized routing scheme is used and the BS selects the routing path according to the topology information collected from network.
- Path Creation message is sent by BS and forwarded along the selected path.
- The intermediate RS nodes update their routing tables according to this path creation message.
- The target RS node should send back an acknowledgement along the path created.

Path Setup/Creation Method

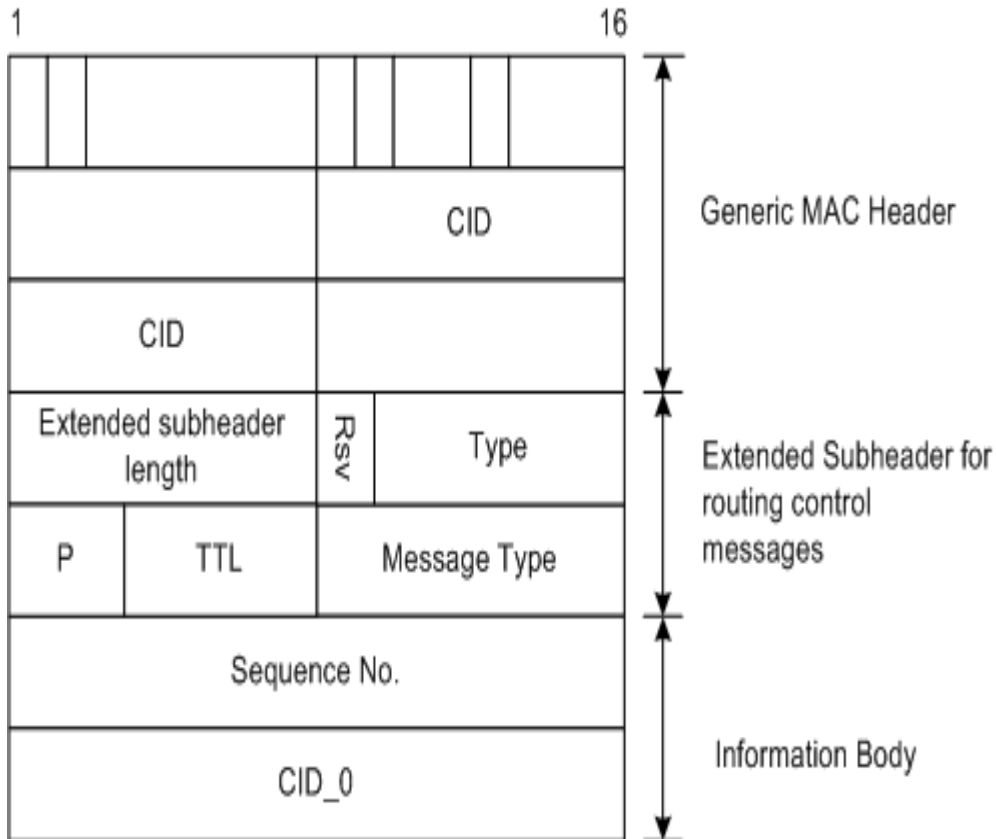


Path Creation Message



- **CID:** forwarding CID.
- **Type:** 7 for DL and 6 for UL
- **Message Type:** path creation
- **P:** Priority.
- **TTL:** time-to-live.
- **Sequence No:** sequence number of the message.
- **CID_0:** path CID.
- **CID1 — CIDn:** the forwarding CID of RSs on the path.

Path Creation ACK



- **CID:** forwarding CID
- **Type:** 7 for DL and 6 for UL
- **P:** Priority
- **TTL:** Time-to-Live
- **Message Type:** Path creation ACK message
- **Sequence No:** Sequence number.
- **CID_0:** Path CID.