

Distributed Bandwidth Request and Allocation in Multi-Hop Relay

IEEE 802.16 Presentation Submission Template (Rev. 8.3)

Document Number:

IEEE S802.16j-07/011

Date Submitted:

2007-01-16

Source:

Kerstin Johnsson, Jerry Sydir, Wendy Wong, Hannah Lee
Intel

email: kerstin.johnsson@intel.com

Masato Okuda, Yuefeng Zhou, Mike Hart, Sunil Vadgama
Fujitsu

email: okuda@jp.fujitsu.com

Dharma Basgeet, Zhong Fan, Yong Sun, Paul Strauch
Toshiba

email: dharma.basgeet@toshiba-trel.com

Jeffrey Z. Tao, Koon Hoo Teo, Jinyun Zhang, Toshiyuki Kuze
Mitsubishi

email: {tao, teo, jzhang}@merl.com

Yanling Lu, Ting Li, David Comstock, John Lee, Zheng Shang, Jingning Zhu email: luyanling@hisilicon.com

Hisilicon and Huawei

Sungjin Lee, Hyunjeong Kang, Hyoungkyu Lim
Samsung

email: steve.lee@samsung.com

Venue:

IEEE 802.16 Session #47, London, UK

Base Document:

IEEE C802.16j-07/011r2

Purpose:

For discussion and approval of inclusion of the proposed text into the P802.16j baseline document.

Notice:

This document has been prepared to assist IEEE 802.16. It is offered as a basis for discussion and is not binding on the contributing individual(s) or organization(s). The material in this document is subject to change in form and content after further study. The contributor(s) reserve(s) the right to add, amend or withdraw material contained herein.

Release:

The contributor grants a free, irrevocable license to the IEEE to incorporate material contained in this contribution, and any modifications thereof, in the creation of an IEEE Standards publication; to copyright in the IEEE's name any IEEE Standards publication even though it may include portions of this contribution; and at the IEEE's sole discretion to permit others to reproduce in whole or in part the resulting IEEE Standards publication. The contributor also acknowledges and accepts that this contribution may be made public by IEEE 802.16.

IEEE 802.16 Patent Policy:

The contributor is familiar with the IEEE 802.16 Patent Policy and Procedures <<http://ieee802.org/16/ipr/patents/policy.html>>, including the statement "IEEE standards may include the known use of patent(s), including patent applications, provided the IEEE receives assurance from the patent holder or applicant with respect to patents essential for compliance with both mandatory and optional portions of the standard." Early disclosure to the Working Group of patent information that might be relevant to the standard is essential to reduce the possibility for delays in the development process and increase the likelihood that the draft publication will be approved for publication. Please notify the Chair <<mailto:chair@wirelessman.org>> as early as possible, in written or electronic form, if patented technology (or technology under patent application) might be incorporated into a draft standard being developed within the IEEE 802.16 Working Group. The Chair will disclose this notification via the IEEE 802.16 web site <<http://ieee802.org/16/ipr/patents/notices>>.

Distributed BW request and allocation

Definition:

Each RS *individually* determines the BW allocations on the links it controls (i.e. access links to its MSs and relay links to its downstream RSs) and creates/transmits its own MAPs on these links.

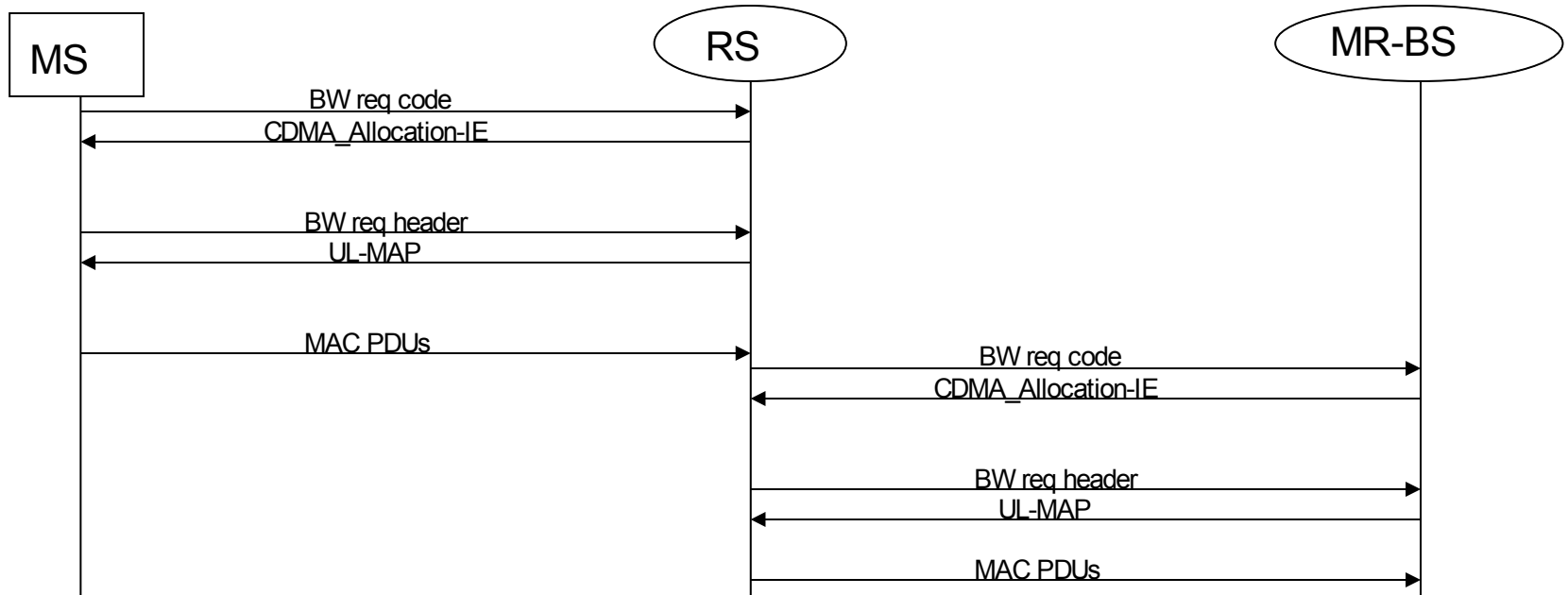
Proposed text for distributed functionality

- BW request and allocation protocols for *access link* are same as those defined in 6.3.6.1-3 and 6.3.6.5, i.e. RS supports all of these protocols for the MS
- Relay link supports the same types of BW request mechanisms as the access link, i.e. polled or contention-based stand-alone BW request and piggy-backed BW request
 - Protocols for these BW request types on the relay links reuse the protocols defined for access links
 - Polling is shown to reduce latency in relaying process
 - Small changes introduced to reduce delay and overhead detailed in next two slides

Aggregating BW requests reduces overhead and latency

- **RS may combine the BW requirements** of the BW requests it receives from its downstream stations during a given period of time along with the BW requirements of packets in queue *into one BW request* that it transmits to its upstream station.
- **This combining is done per QoS class**, i.e. one BW request per QoS class is sent to the upstream station.
- **Upstream station assigns BW to the RS's Basic CID**, thus the RS can use this BW allocation in whatever way it considers best for addressing the QoS concerns of the packets in its queues.

Advancing start time of contention BW request reduces latency



Allowing RS to begin contention-based BW request upon receipt of BW requests from downstream stations instead of waiting for actual packets to arrive may reduce latency

