

# Tunnel Establishment

## IEEE 802.16 Presentation Submission Template (Rev. 8.3)

Document Number:

[IEEE S802.167-07/264r3

Date Submitted:

2007-03-15

Source:

Changkyoon Kim, Hyung Kee Kim, Mi kyoung Lee, Young-jae Kim, Kyu Ha Lee  
Samsung Thales Co., Ltd  
San 12-1, Nongseo-Dong, Giheung-Gu,  
Yongin-City, Gyeonggi-Do, Korea 446-712

Voice: +82-31-280-9919

Fax: +82-31-280-1620

E-mail: [changkyoon.kim@samsung.com](mailto:changkyoon.kim@samsung.com)

E-mail: [kyuha.lee@samsung.com](mailto:kyuha.lee@samsung.com)

Sunggeun Jin, Young Jin Moon, Young-il Kim  
ETRI  
161, Gajeong-Dong, Yuseong-Gu, Daejeon,  
Korea 205-350

Voice : +82-42-860-1757

Fax: +82-42-861-1966

E-mail: [sgjin@etri.re.kr](mailto:sgjin@etri.re.kr)

Venue:

IEEE 802.16 Session #48

Base Document:

IEEE C802.16j-06/026

Purpose:

To propose the procedure of the tunnel establishment

Notice:

This document has been prepared to assist IEEE 802.16. It is offered as a basis for discussion and is not binding on the contributing individual(s) or organization(s). The material in this document is subject to change in form and content after further study. The contributor(s) reserve(s) the right to add, amend or withdraw material contained herein.

Release:

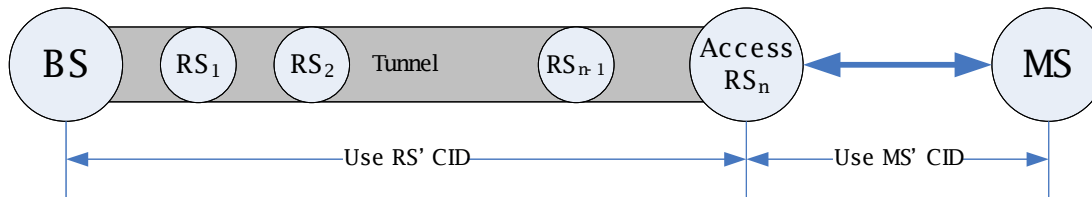
The contributor grants a free, irrevocable license to the IEEE to incorporate material contained in this contribution, and any modifications thereof, in the creation of an IEEE Standards publication; to copyright in the IEEE's name any IEEE Standards publication even though it may include portions of this contribution; and at the IEEE's sole discretion to permit others to reproduce in whole or in part the resulting IEEE Standards publication. The contributor also acknowledges and accepts that this contribution may be made public by IEEE 802.16.

IEEE 802.16 Patent Policy:

The contributor is familiar with the IEEE 802.16 Patent Policy and Procedures <http://ieee802.org/16/ipr/patents/policy.html>, including the statement "IEEE standards may include the known use of patent(s), including patent applications, provided the IEEE receives assurance from the patent holder or applicant with respect to patents essential for compliance with both mandatory and optional portions of the standard." Early disclosure to the Working Group of patent information that might be relevant to the standard is essential to reduce the possibility for delays in the development process and increase the likelihood that the draft publication will be approved for publication. Please notify the Chair <mailto:chair@wirelessman.org> as early as possible, in written or electronic form, if patented technology (or technology under patent application) might be incorporated into a draft standard being developed within the IEEE 802.16 Working Group. The Chair will disclose this notification via the IEEE 802.16 web site <http://ieee802.org/16/ipr/patents/notices>.

# Tunnel

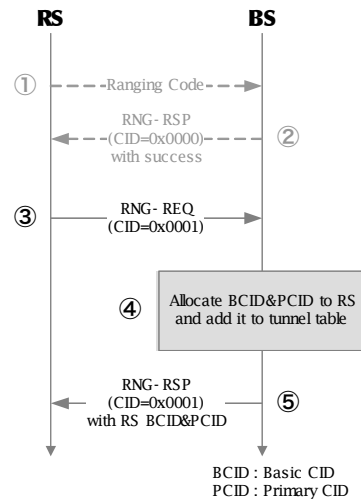
- What is Tunnel?



- Advantage (vs. Path)
  - When the MS moves from one access RS to another,
  - For path, every associated nodes change its own routing table.
  - For tunnel, the MR-BS and access RS change its own routing table.
- Scope
  - Suitable for the fixed RS
  - We will extend to the mobile RS, if it is completed to define operations related to RS movement.

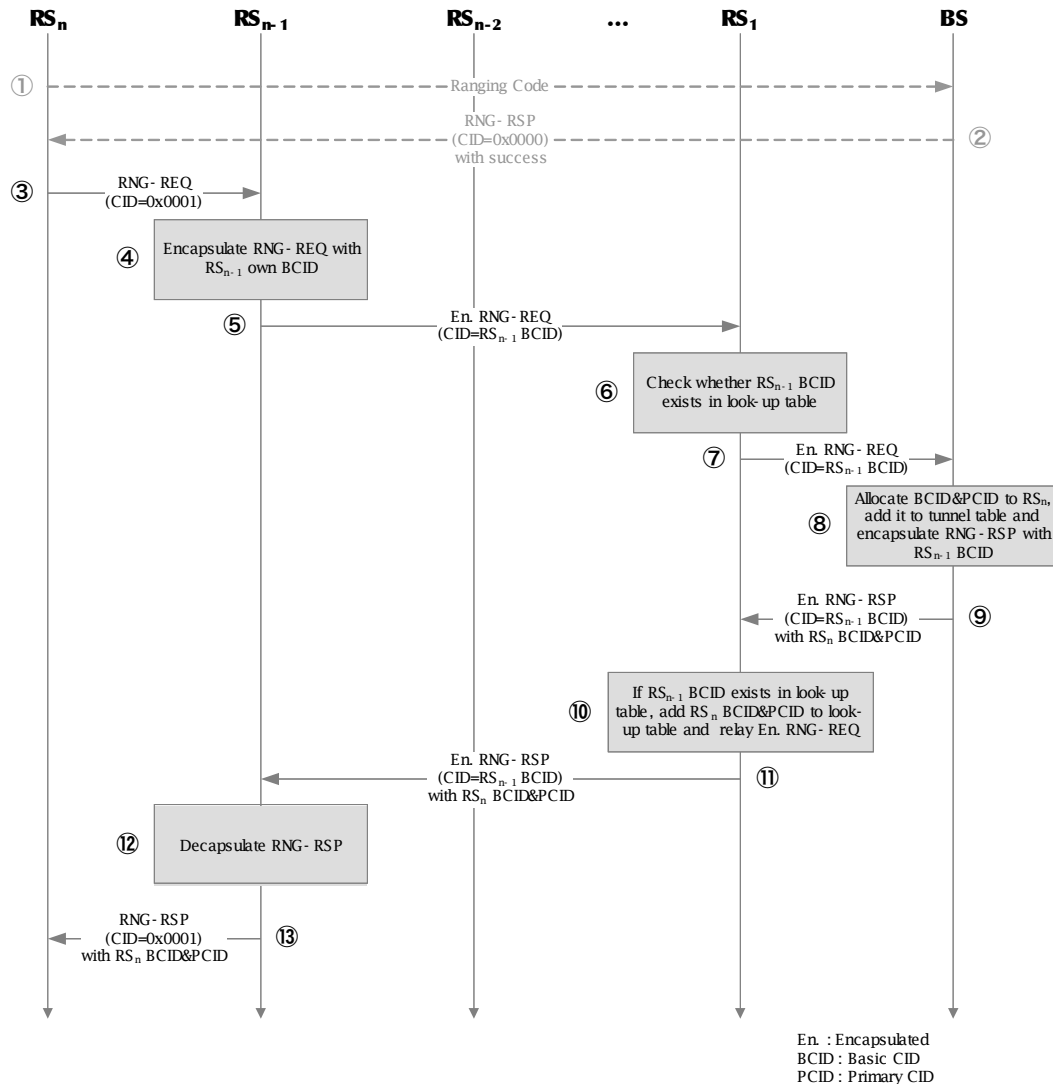
# Tunnel Establishment – I

## Initial ranging of 1-hop RS



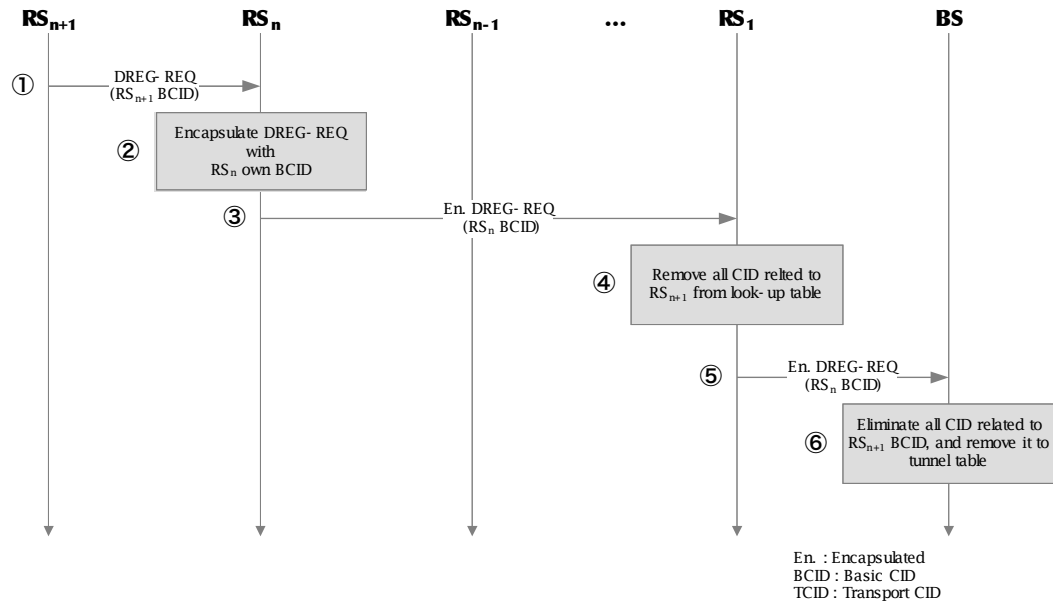
# Tunnel Establishment – II

## Initial ranging of multi-hop RS



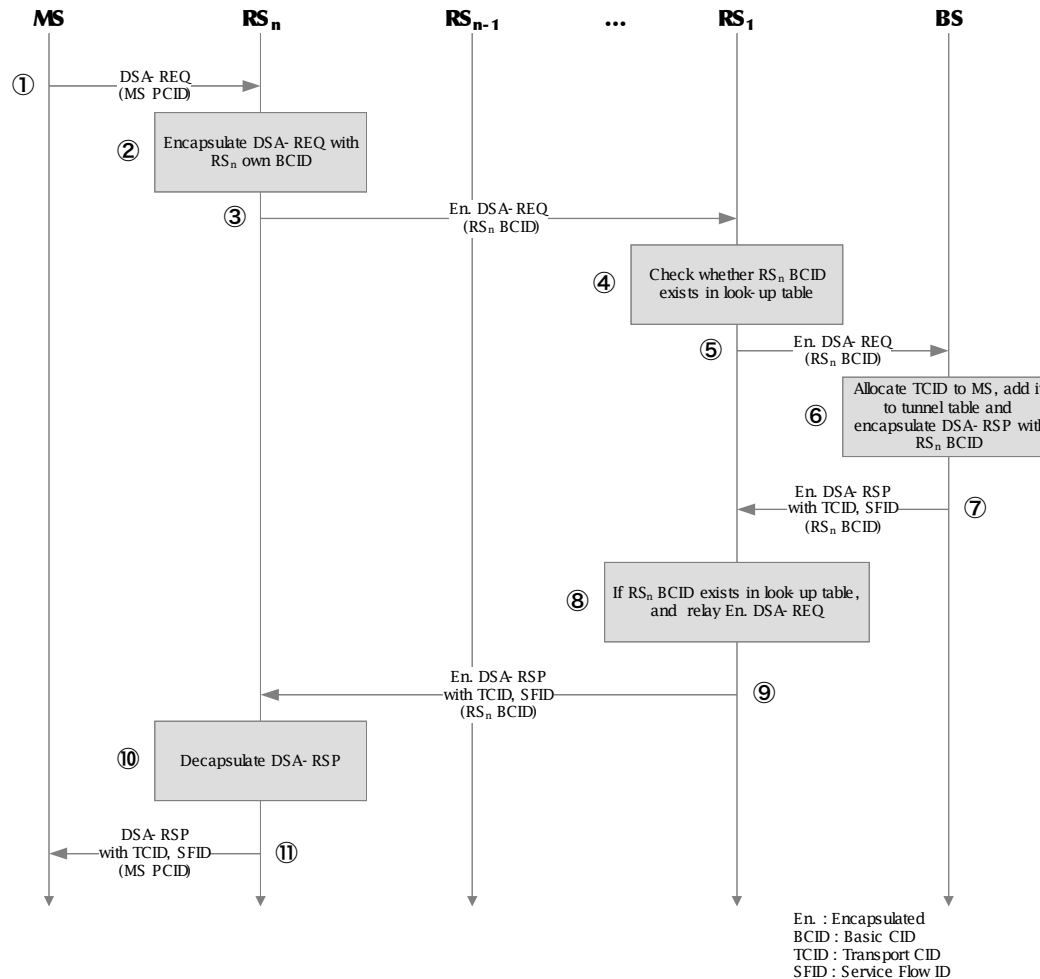
# Tunnel Establishment – III

## Deregistration of RS



# Tunnel Establishment – IV

## Service Flow Addition of MS



# Tunnel Establishment –V

## Service Flow Deletion of MS

