

# Preliminary Performance Benefit of Single-Hop OFDMA Relay in IEEE802.16

Document Number:

S802.16e-05/010r1

Date Submitted:

2005-09-09

Source:

Gamini Senarath, Wen Tong, Peiyong Zhu, Mo-Han Fong    Voice:613-763-1315  
Hang Zhang, Jianglei Ma, G.Q Wang and Dave Paranchych  
Nortel    Fax:613-765-7723  
3500 Carling Avenue    E-mail:wentong@nortel.com  
Ottawa, Ontario, K2H 8E9

Base Document: N/A

Purpose:

To present the benefit of Fixed Relay and Mesh to enhancement IEEE802.16e performance.

Notice:

This document has been prepared to assist IEEE 802.16. It is offered as a basis for discussion and is not binding on the contributing individual(s) or organization(s). The material in this document is subject to change in form and content after further study. The contributor(s) reserve(s) the right to add, amend or withdraw material contained herein.

Release:

The contributor grants a free, irrevocable license to the IEEE to incorporate material contained in this contribution, and any modifications thereof, in the creation of an IEEE Standards publication; to copyright in the IEEE's name any IEEE Standards publication even though it may include portions of this contribution; and at the IEEE's sole discretion to permit others to reproduce in whole or in part the resulting IEEE Standards publication. The contributor also acknowledges and accepts that this contribution may be made public by IEEE 802.16.

IEEE 802.16 Patent Policy:

The contributor is familiar with the IEEE 802.16 Patent Policy and Procedures <<http://iee802.org/16/ipr/patents/policy.html>>, including the statement "IEEE standards may include the known use of patent(s), including patent applications, provided the IEEE receives assurance from the patent holder or applicant with respect to patents essential for compliance with both mandatory and optional portions of the standard." Early disclosure to the Working Group of patent information that might be relevant to the standard is essential to reduce the possibility for delays in the development process and increase the likelihood that the draft publication will be approved for publication. Please notify the Chair <<mailto:chair@wirelessman.org>> as early as possible, in written or electronic form, if patented technology (or technology under patent application) might be incorporated into a draft standard being developed within the IEEE 802.16 Working Group. The Chair will disclose this notification via the IEEE 802.16 web site <<http://iee802.org/16/ipr/patents/notices>>.

# Statement of Problem

## **Non-uniform coverage is a fundamental limit of adaptive coding modulation based IEEE802.16e-like shared channel systems.**

- ❑ MS located away from base receive a lower data rate in average and, therefore, services cannot be offered uniformly across the coverage area.
  - ❑ For FUSC case
    - ❑ Downlink: 31% of users have less than 0 dB C/I.
    - ❑ Uplink: 42% users have less than 0 dB C/I.
- ❑ Highly unfair throughput distribution if Round Robin Equal Time Slot or Proportional Fairness (PF) scheduling is used.
- ❑ Layer 2 scheduling can be done so as to deliver equal throughput (EQT) to all the users but has a severe penalty on capacity
  - ❑ For FUSC case
    - ❑ Downlink: 50% hit.
    - ❑ Uplink: 80% hit (i.e. reduces to 20%)
- ❑ In addition, users may experience different delays depending on their location because low rate users cannot empty their buffers as fast as the high rate users.

# Different Relaying Configurations

- ❑ Fixed Relaying or Mobile Relaying
  - ❑ Limited to two hops vs using multiple hops
- ❑ Diversity options that can be applied
  - ❑ Use long-term trends → HHO
    - ❑ choose the best path (direct or relay)
    - ❑ track only LogNormal
  - ❑ Use selection diversity → FBSS for temporal fading gain
    - ❑ can be used only for nomadic and slow moving mobiles (< 20 km/hr).
    - ❑ Relay path vs direct path (also known as multi-hop diversity)
    - ❑ Relay path vs another relay path (also known as multi-route diversity)
  - ❑ Use Diversity Combining → MDHO
    - ❑ applicable to all the speeds
    - ❑ Relay path vs direct path (also known as multi-hop diversity)
    - ❑ Relay path vs another relay path (also known as multi-route diversity)
- ❑ Type of Antennas used
  - ❑ Omni vs directional antenna for relays
- ❑ Relay Types:
  - ❑ Analogue repetition
  - ❑ Decode and forward
  - ❑ Decode, store, schedule and forward

# Relay vs. MDHO Solution

<b>MDHO (Macro-Diversity Handoff)</b>	<b>Fixed Relay</b>
Improves Coverage Significantly	Improves Coverage Significantly
Uses two time resource units (from two BSs) for MDHO users – can impact capacity	Uses two time resource units for relay users – but link gain is higher and this shown to improve capacity
Dynamic BS – BS co-ordination required (e.g. scheduling)	BS-BS co-ordination not required except for hand off.
Additional backhaul capacity required.	Not required unless FBSS is used.
Additional hardware resources needed at the BTSs for MDHO	Additional sites with power supply and additional relay units are required
Smooth make before break handover naturally provided.	Fast make before break handover solution is required for delay sensitive services
BS synchronization required	BS synchronization required. However, relays may be used to support BS-BS sync without the need of GPS
Pilot measurements are used for BS and hand off decisions	Relays are required to provide Downlink pilots and IDs for relay to MS dynamic path loss measurements.

# Simulation Assumptions/Parameters

## – Relay antenna pattern and placement

- Relay Antenna to BS: Omni
- Relay Antenna to MS: Omni
- Relay Placement:
  - 3 relay per sector, d meters away from BS
  - $d = k * \text{BS\_to\_BS distance (i.e. } 3 * \text{cell\_radius)}$

## – Tx Power, Path loss and shadowing

- Beam Tx power = 15 watts (i.e. 41.76 dBm = 60.2 dBm (FCC EIRP limit) – 1.5 dB (Implementation margin) – 18.76 dB (Antenna Gain) ).
- Relay Tx power is 3 watts, MS max. Tx. power = 600 mw.
- Base Height = 34 m; Relay Height = 12.5 m (above roof top) and 4 m (below roof-top).
- **Base to Relay path loss:** 802.16 Type C
- **Relay to MS path loss:** See later chart
- **Shadowing:** BM – 10 dB, uncorrelated for initial results,
  - RM: 4 dB for above roof top model
- **Temporal fading is not modeled, shadowing is modeled.**
  - This means average C/I is used to evaluate data rate..

# Relay and MDHO Modeling

## – Simplest in-band OFDM/TDM relay mode

- **Downlink:**

- BS to MS time slot : Interference at MS only from BSs
- BS to Relay time slot : Interference at Relay only from BSs
- Relay to MS time slot : Interference at MS only from Relays

- **Uplink:**

- MS to base or MS to Relay time slot :
- Relay to Base time slot

## – 2-way MDHO with a 3 dB threshold & a simple MDHO gain evaluation:

- **For DL MDHO**

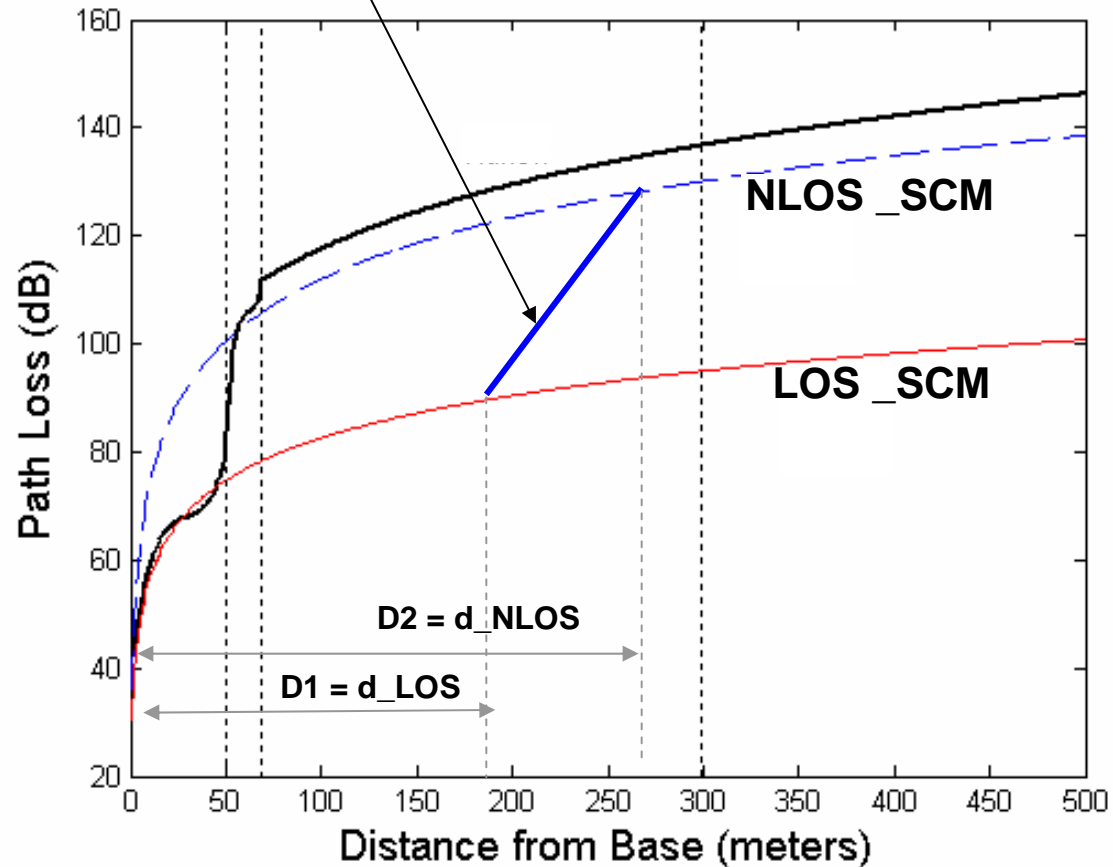
$$C/I = (C1 + C2) / (C3 + C4 + \dots + Cn)$$

- **For UL MDHO**

$$C/I = \max(C1/C2+C3+..Cn), (C2/C1+C3+C4+..Cn)) ;$$

# Generic Model Path Loss Model of Relay to MS

Generic Model uses SCM model when  $d < d_1$  and  $d > d_2$ .  
 Uses linear Interpolation for Transition Period.



**NLOS SCM Model:**  
 Pathloss =  $36 + 38 \cdot \log_{10}(\text{distance})$  ..... Eq(1)  
**LOS SCM Model:**  
 Pathloss =  $30.6 + 26 \cdot \log_{10}(\text{distance})$  .... Eq(2)

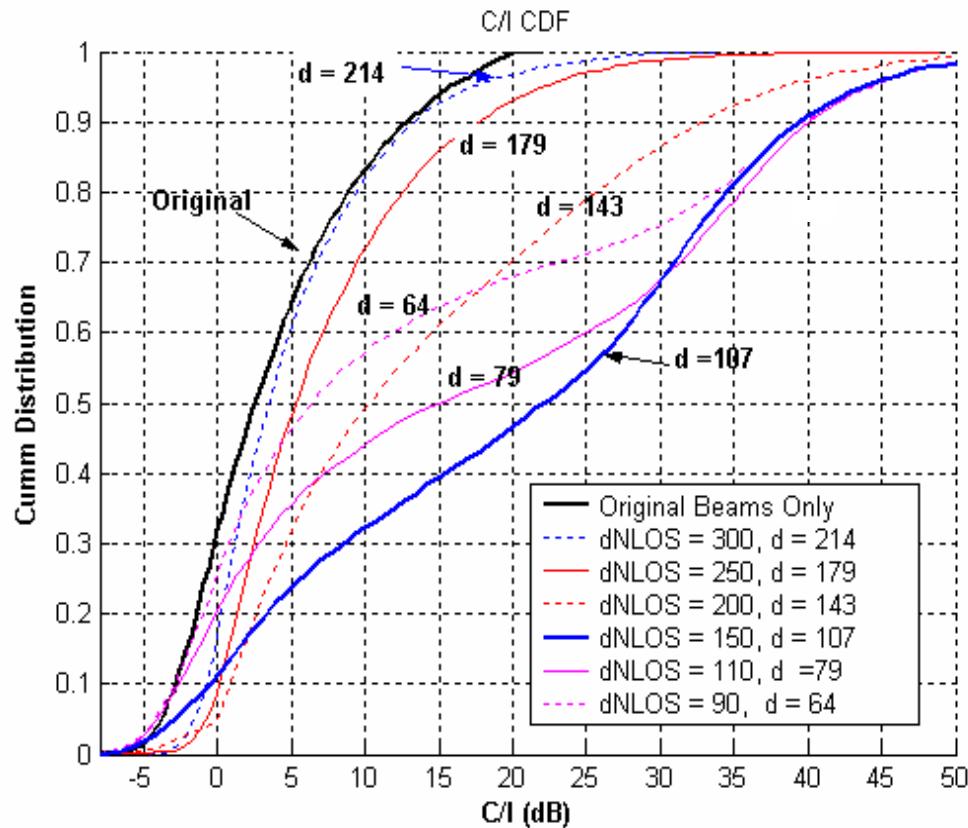
# Relay Positioning for Optimum Coverage

- **Relay path loss models have a LOS component and a NLOS component which can be used for effective isolation among relays in relay position planning.**
- **Relay height impacts LOS distance of the relay and relay path loss model.**
- **The following parameters may be carefully selected to provide best coverage**
  - Base to relay distance ( $d_r$ ),
  - LOS distance ( $d_{los}$ ) and NLOS distance ( $d_{Nlos}$ ) of the relay
    - if this is controllable, i.e., by changing relay height
  - Number of relays ( $N_r$ )
- **Objective is to find above numbers when cell-radius is given**
  - Minimize gaps which are not covered by the bases
  - Minimize overlapping of relay coverage area



# Optimization of Relay Positioning

CDF Curves for Relay only case



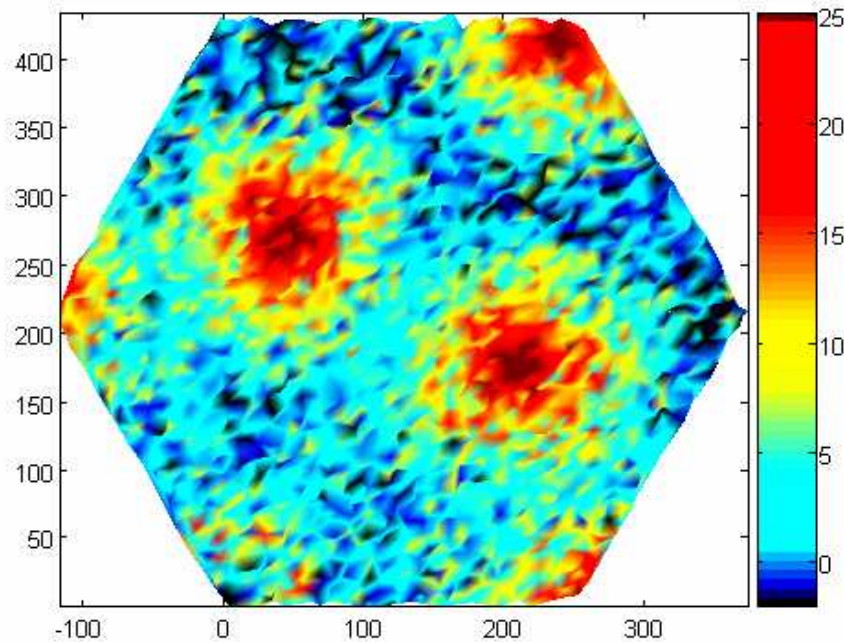
- The relay position can be optimized to balance the coverage vs. capacity

# Coverage Comparison

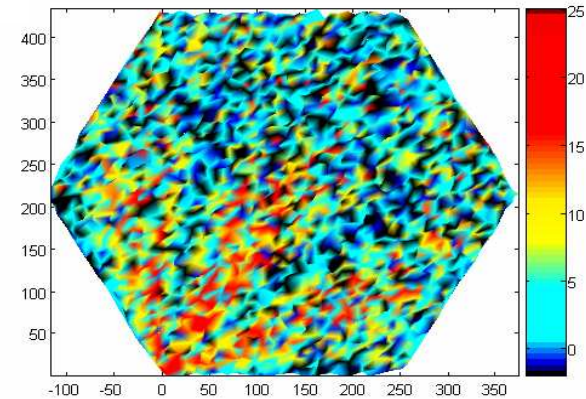
$$r = 275 \text{ m}, k = 0.367$$

Percentage of coverage holes (black and dark blue) has been reduced significantly.

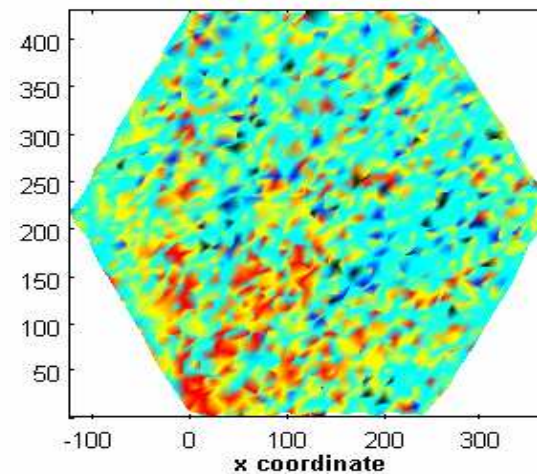
### Relay Only



### AAS(SDMA)



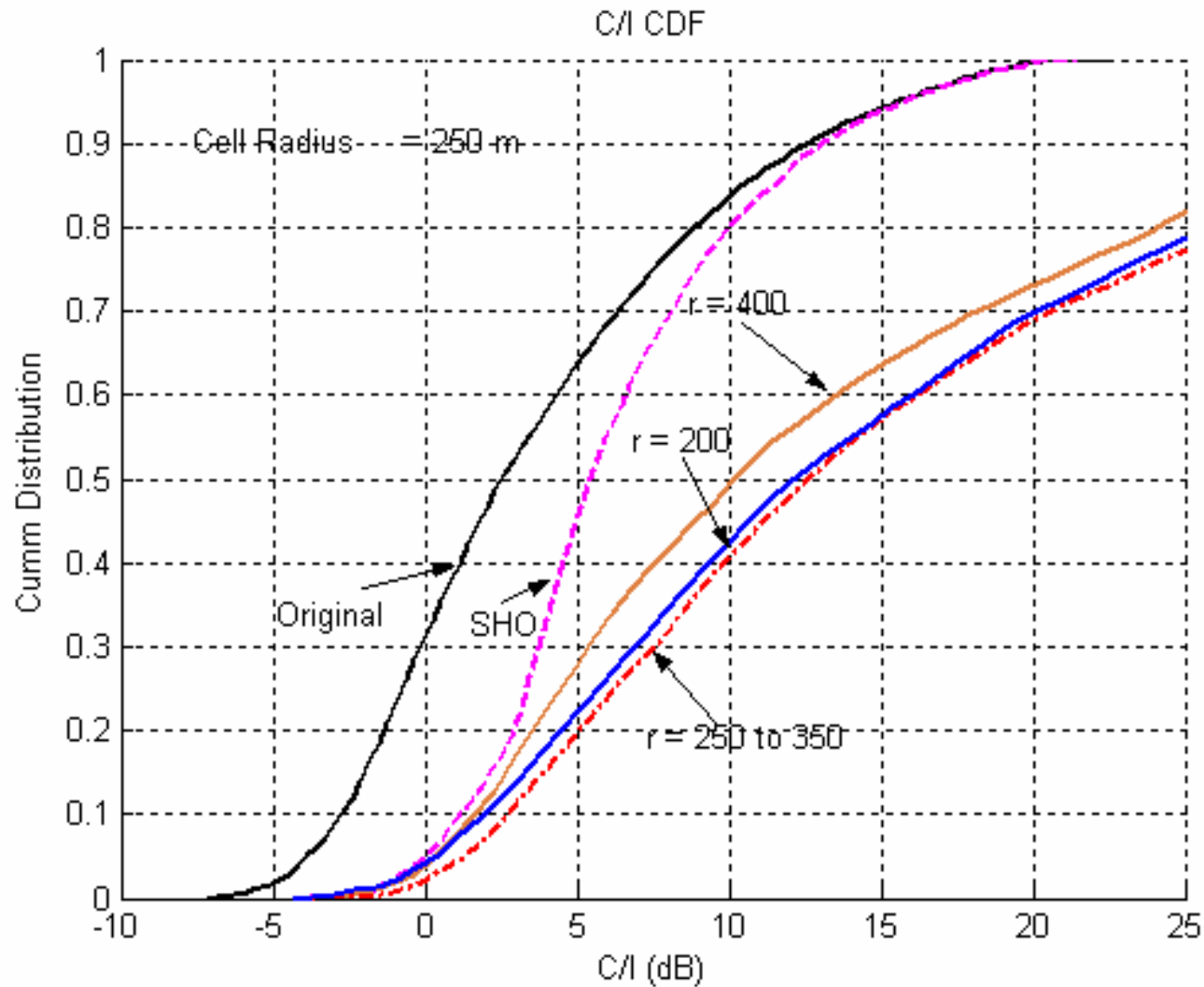
### SDMA+MDHO



- MDHO reduces percentage of coverage holes (black and dark blue) significantly. The improvement is seen in lower C/I areas and at the cell edge. Relays provide higher C/I gains even at the cell edge (previous chart).
- Both relay and MDHO uses more time slots to get this improvement. 2-way MDHO use 2 time slots. Relay may not need 2 time slots as base to relay can be sent at a higher AMC level.

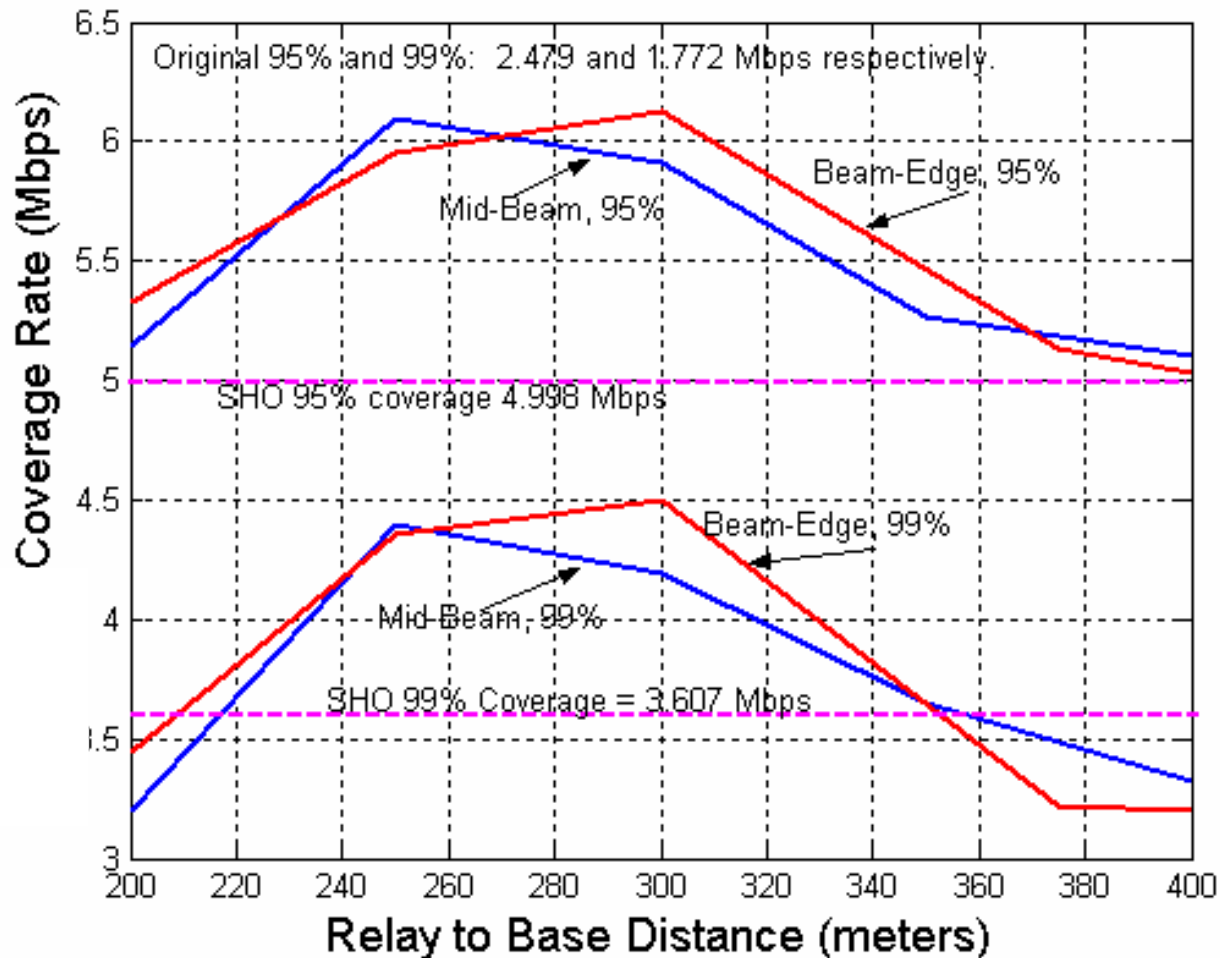
# Coverage Impact from Relay to BS Distance

- Relay in the beam boundary (Edge Relay)



# Coverage Comparison

(Relay at the middle vs Relay at the Edge)



Cell Radius = 250 m  
Distance between  
Two BTSs = 750 m  
d is the relay to base  
distance.

Above Roof Top Model  
(SCM) is used.

Best Position  
d = 300 m for Edge Relays  
d = 250 for Center Relays

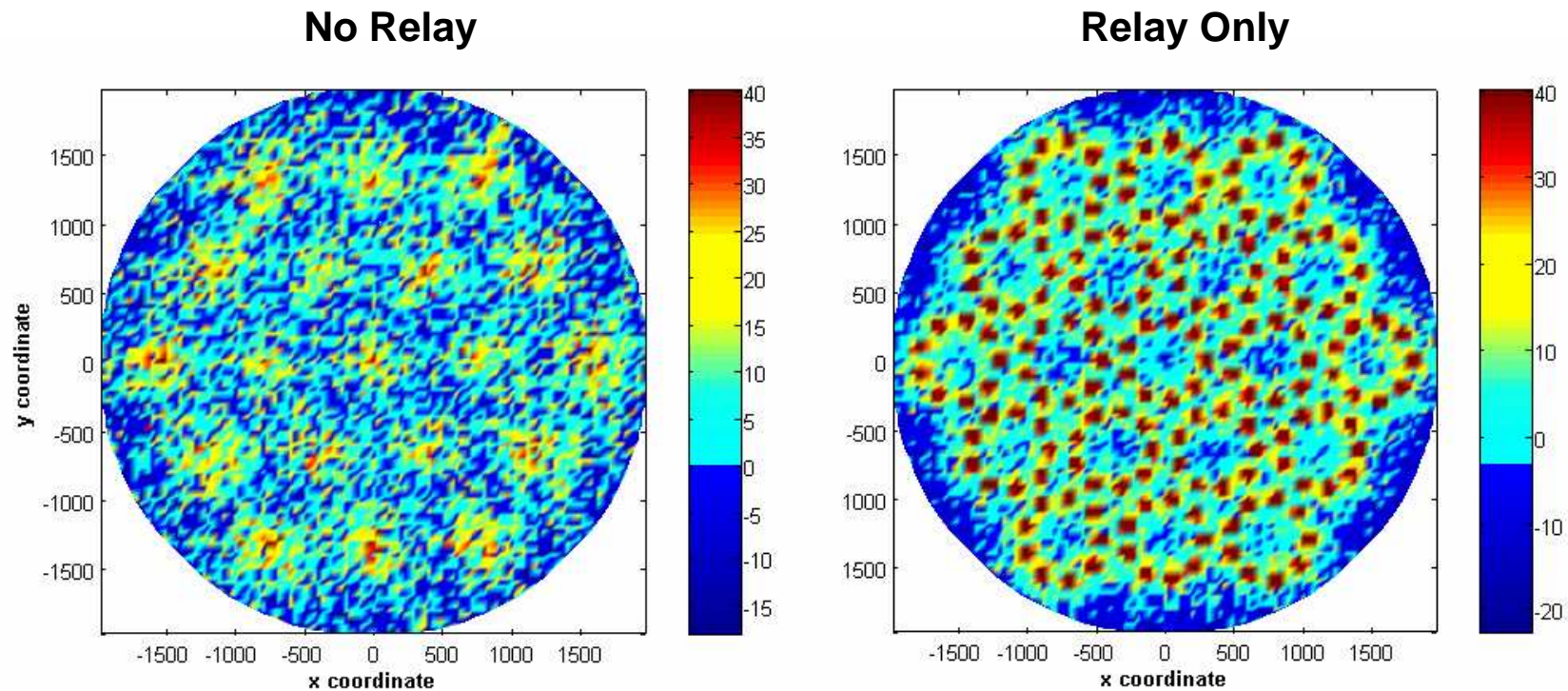
# Observations

- **Impact of Shadowing:**
  - For large  $d$  (relay NLOS distance) values, curves with and without shadowing are similar. For small  $d$  values, a small difference observed in the middle and top sections of the CDF when shadowing is applied
  - 99% coverage increases by up to 0.3 dB when shadowing is applied
- **The LOS distance( $d_1$ ) and NLOS distance ( $d_2$ ) significantly impact the performance.**
  - There is an optimum LOS distance: from 79 m to 200 m
  - Results agree well with the previous relay geometry analysis which indicated the existence of an optimum relay coverage distance of 100 m
  - Relay coverage is higher than MDHO for larger  $d_{LOS}$  values. For smaller  $d_{LOS}$  MDHO has a slightly higher coverage.
- **Relay to base distance significantly impact relay coverage.**
  - Optimum distance is between 250-300 m

# Summary for DL One-Hop Relay

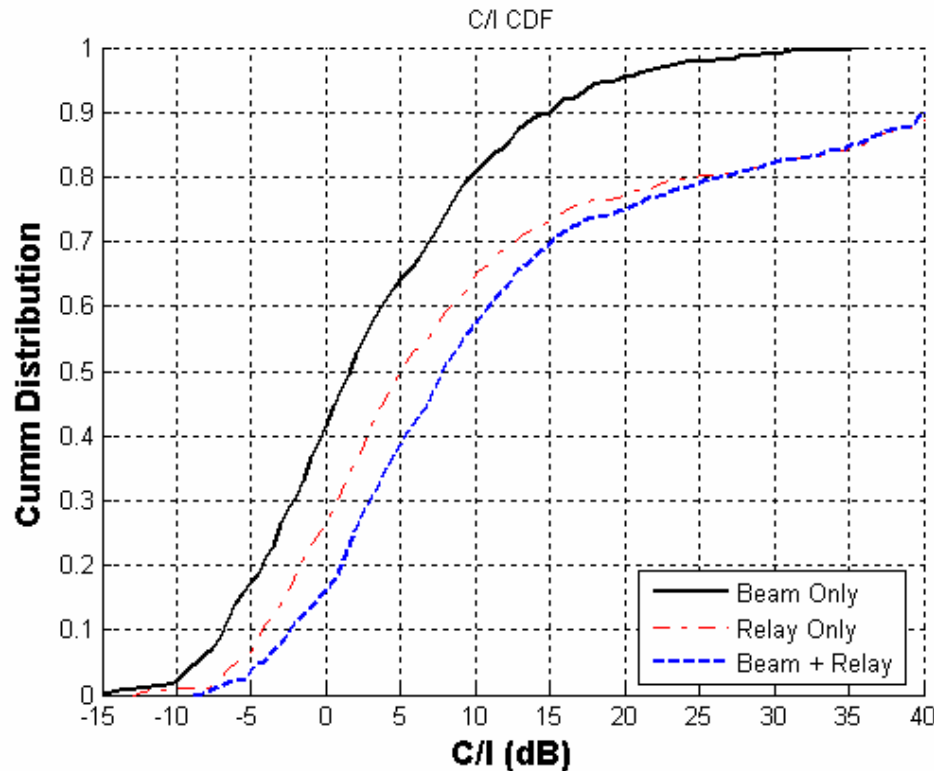
- ❑ **Relays provide a significant capacity gains in addition to the coverage improvement.**
  - EQT capacity gain is 55% to 170%.
  - Round Robin Equal Time Slot capacity gain is 25% to 150%.
  - Fairness decreased when relay users are provided with two time slots
  - Relay selection scheme would change this result
    - in these results, relay is selected when its signal is better than the direct path.
  - Providing network wide equal resources increases capacity as well as fairness significantly under several propagation conditions and therefore is the preferred round robin option for relays.
- ❑ **MDHO expects to provide larger gains for delay sensitive services.**

# Uplink Relay Performance - with Shadowing



- **Relay placement is very complementary to each other.**
- **Significant improvement in coverage from relays (see C/I cdf in next chart).**

# Uplink Relay Impact with Shadowing



- The larger impact for the uplink (than downlink) is attributed to the mobile transmit power limitation.

## Impact of Noise:

- All the C/I curves shifted left. 99% coverage numbers degraded (beams by 2.1 dB from -10.4 dB to -12.5 dB; Relay by 3.3 dB (from - 4.2 dB -7.5 dB)
  - C/I improvement in low C/I areas is smaller than the results with 'Interference Limited' assumption (5 dB 99% coverage gain compared to 6.2 dB gain).
- Still significant improvement from relays.



# Transmit Power Gain of MS

- **Uplink coverage is a critical issue**
  - 99% C/I coverage = **-12.5 dB**
- **2-way MDHO slightly improves single user coverage but degrades multi-user coverage and capacity for delay tolerant services**
  - 99% C/I coverage = **-9.8 dB (2.7 dB improvement)**
  - Round Robin Equal Time Slot capacity
- **Relay improves coverage and capacity significantly.**
  - 99% C/I coverage = **-7.5 dB (5.0 dB improvement)**
  - Round Robin Equal Time Slot capacity significantly increased (6 mbps/beam to 10.7 Mbps)

**Relay provides HUGE coverage and capacity gains for uplink.  
MDHO can also provide higher gains for delay sensitive services.**

## Summary for UL One-Hop Relay

- Relays provide significant capacity gains in addition to the coverage improvement**
  - EQT capacity improved by 82%
  - Round Robin Equal Time Slot capacity improved by 76%.
- We used a worse case propagation scenario for relays.**
  - For favorable propagation scenarios a higher gain can be achieved with relays ( $150\text{m} < \text{NLOS distance} < 250\text{m}$ ).**
- Power management may increase coverage and capacity even without relays. Therefore, coverage and capacity need to be evaluated under power management schemes in order to assess the benefit from relays (future work).**
- MDHO expects to provide larger gains for delay sensitive services**