

Project	<b>IEEE 802.16 Broadband Wireless Access Working Group</b> < <a href="http://ieee802.org/16">http://ieee802.org/16</a> >	
Title	<b>Replacement Figures Mentioned in TG1 Comments</b>	
Date Submitted	<b>2000-10-27</b>	
Source(s)	Ken Stanwood Ensemble Communications 9890 Towne Centre Dr. San Diego, CA 92121	Voice: (808) 404-6559 Fax: (858) 638-7142 <a href="mailto:ken@ensemblecom.com">mailto:ken@ensemblecom.com</a>
Re:	New versions of figures for TG1 call for comments.	
Abstract	My comments mentioned new versions of figures that I hold the originals of. This contains the new figures.	
Purpose	For reference to my TG1 comments.	
Notice	This document has been prepared to assist IEEE 802.16. It is offered as a basis for discussion and is not binding on the contributing individual(s) or organization(s). The material in this document is subject to change in form and content after further study. The contributor(s) reserve(s) the right to add, amend or withdraw material contained herein.	
Release	The contributor grants a free, irrevocable license to the IEEE to incorporate text contained in this contribution, and any modifications thereof, in the creation of an IEEE Standards publication; to copyright in the IEEE's name any IEEE Standards publication even though it may include portions of this contribution; and at the IEEE's sole discretion to permit others to reproduce in whole or in part the resulting IEEE Standards publication. The contributor also acknowledges and accepts that this contribution may be made public by IEEE 802.16.	
Patent Policy and Procedures	<p>The contributor is familiar with the IEEE 802.16 Patent Policy and Procedures (Version 1.0) &lt;<a href="http://ieee802.org/16/ipr/patents/policy.html">http://ieee802.org/16/ipr/patents/policy.html</a>&gt;, including the statement "IEEE standards may include the known use of patent(s), including patent applications, if there is technical justification in the opinion of the standards-developing committee and provided the IEEE receives assurance from the patent holder that it will license applicants under reasonable terms and conditions for the purpose of implementing the standard."</p> <p>Early disclosure to the Working Group of patent information that might be relevant to the standard is essential to reduce the possibility for delays in the development process and increase the likelihood that the draft publication will be approved for publication. Please notify the Chair &lt;<a href="mailto:r.b.marks@ieee.org">mailto:r.b.marks@ieee.org</a>&gt; as early as possible, in written or electronic form, of any patents (granted or under application) that may cover technology that is under consideration by or has been approved by IEEE 802.16. The Chair will disclose this notification via the IEEE 802.16 web site &lt;<a href="http://ieee802.org/16/ipr/patents/notices">http://ieee802.org/16/ipr/patents/notices</a>&gt;.</p>	

# Replacement Figures Mentioned in TG1 Comments

Ken Stanwood  
Ensemble Communications

## Purpose

My TG1 comments stated the need to do editorial changes to 4 figures for which I created the originals. The changes are described in my TG1 comments, and are merely editorial. They fall into 2 categories – changing CPE to SS, and showing adaptive burst types rather than merely adaptive modulation. Both are changes that were accepted last meeting, but the Figures still need updated. Since the comments are in text only, this document provides the figures and the files names with which I referenced them in my comment text. These figures have also been sent to the editors as Visio files.

## New Figures

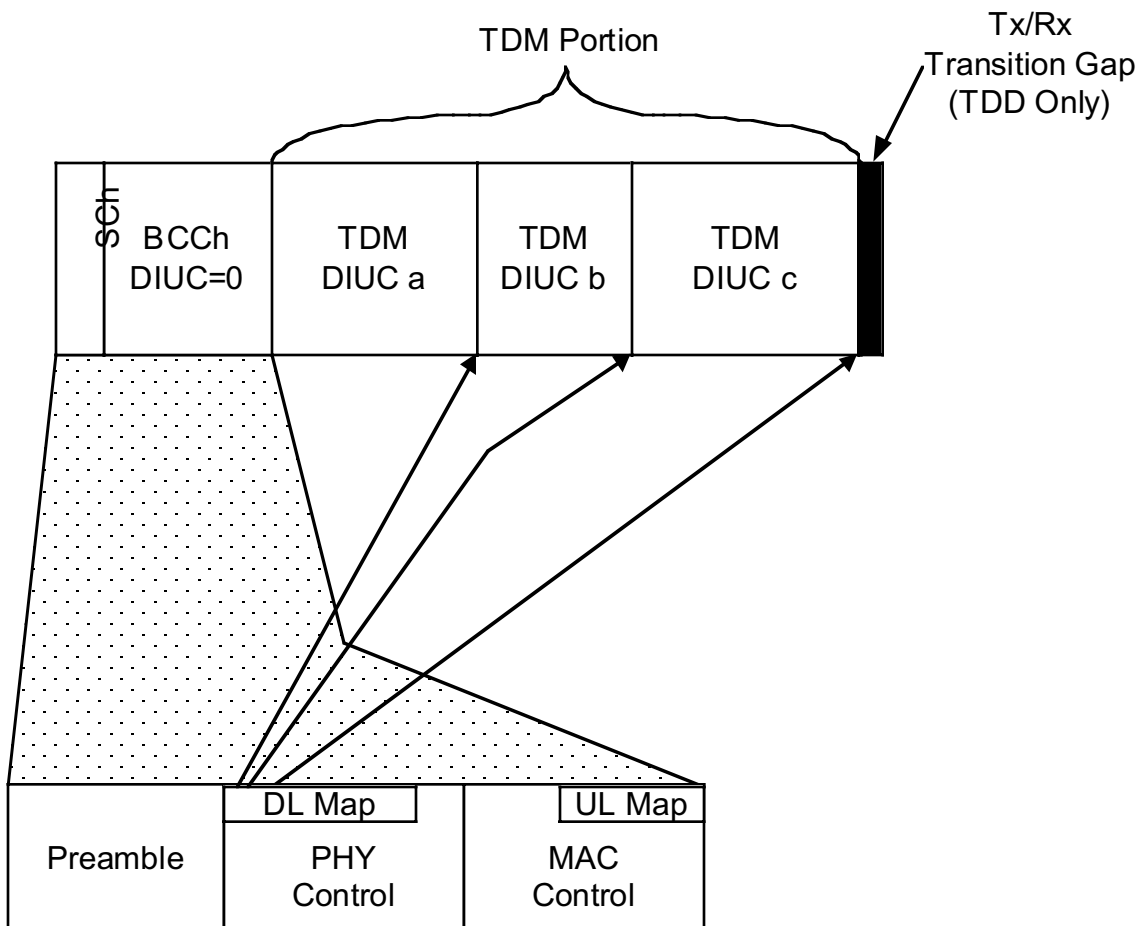


Figure 51 : Mentioned in comments as file TDD\_DLSubframe.vsd

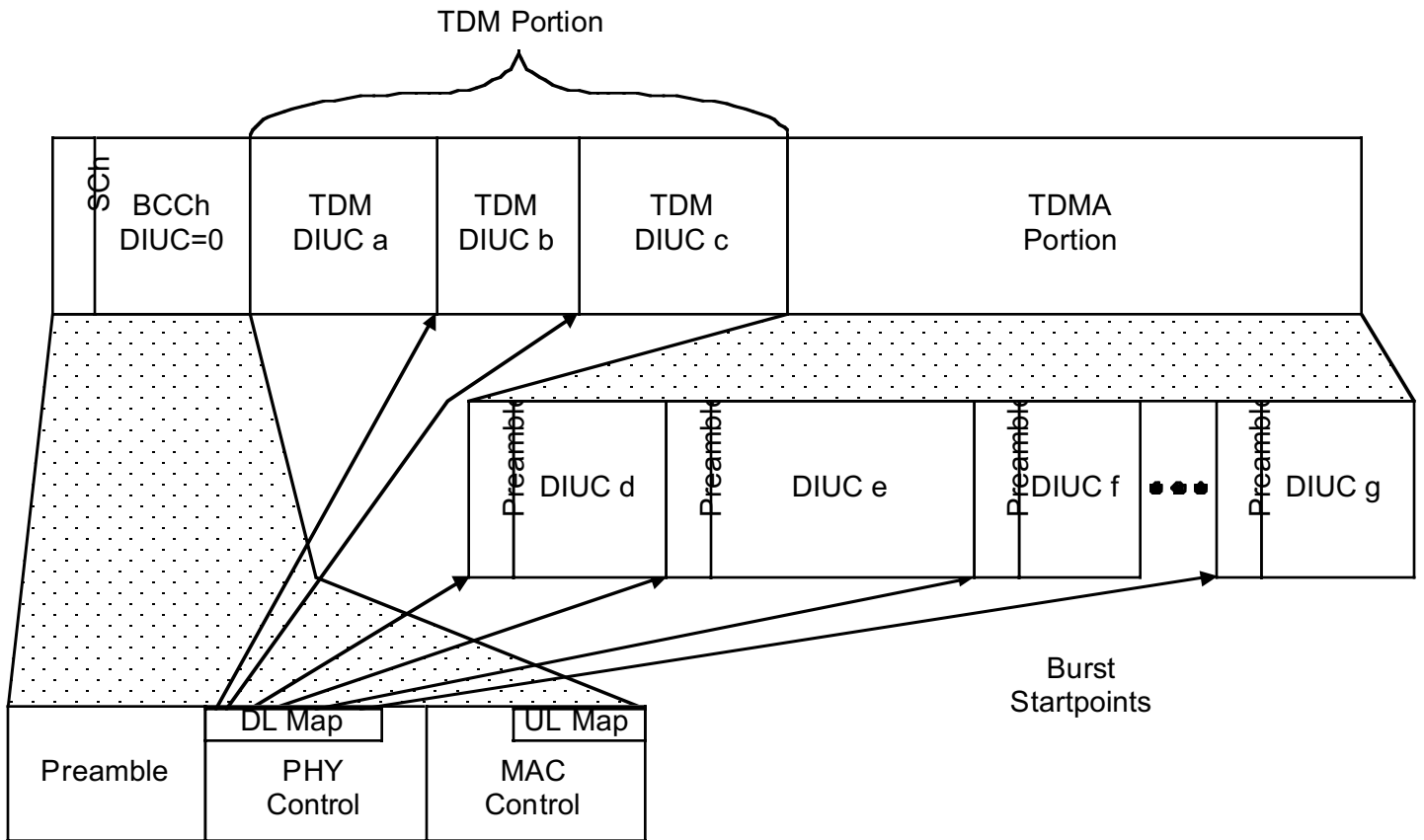


Figure 52: Mentioned in comments as file BurstFDD\_DLSubframe.vsd

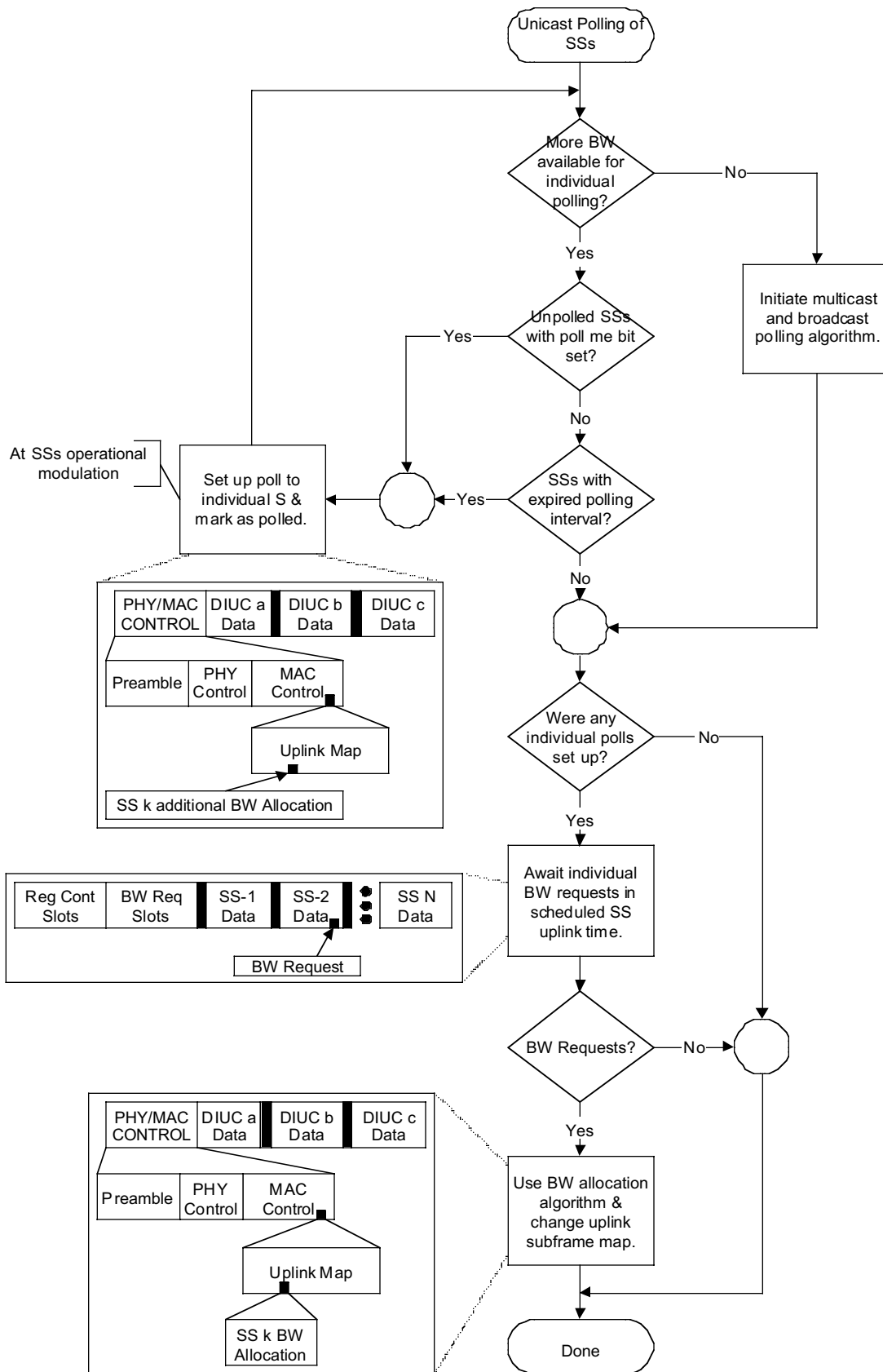


Figure 63: Mentioned in comments as file UnicastPolling.vsd

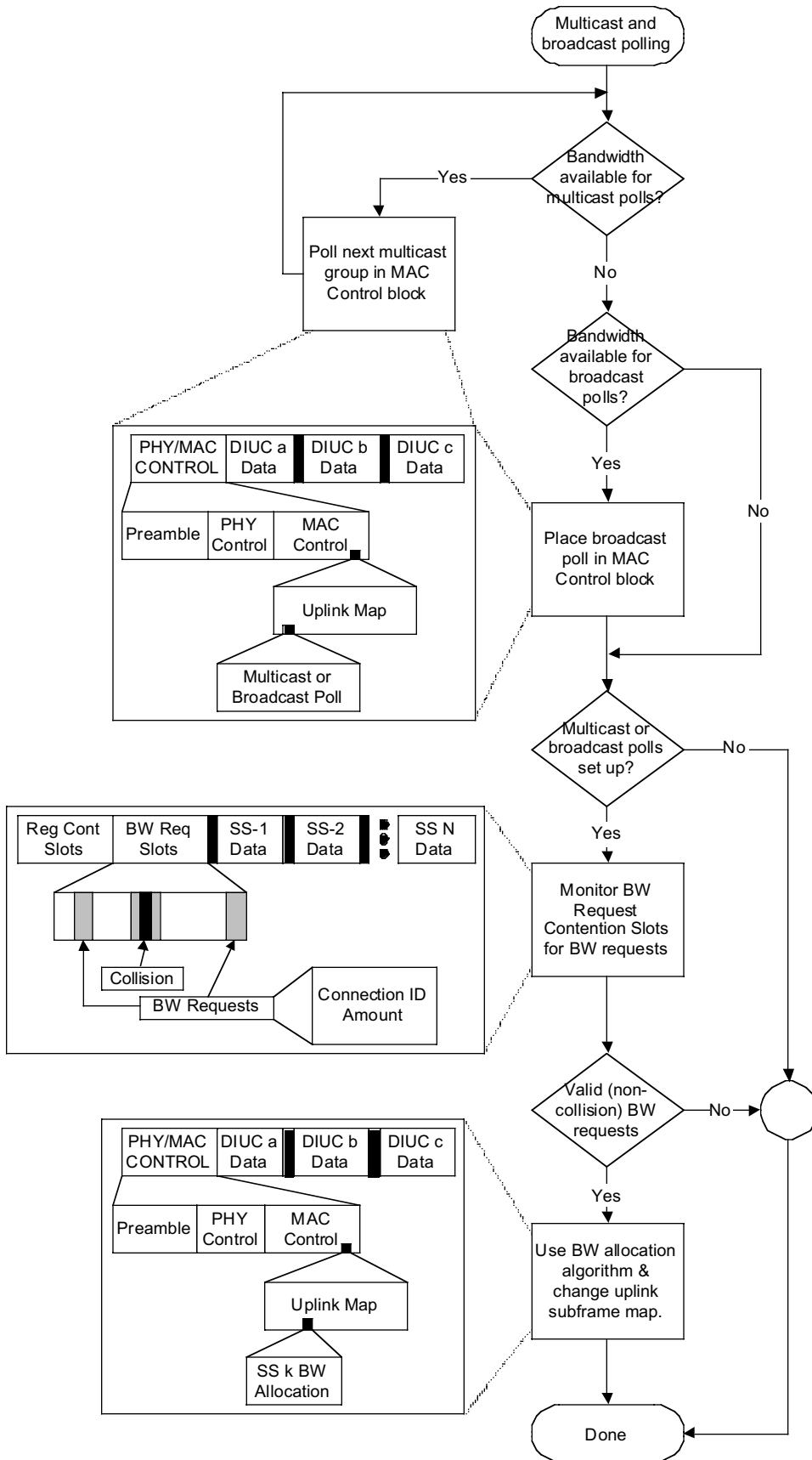


Figure 64: mentioned in comments as file Multicast\_Polling.vsd