

Project	IEEE 802.16 Broadband Wireless Access Working Group < http://ieee802.org/16 >	
Title	Handoff/Sleep-mode changes	
Date Submitted	2003-07-14	
Source(s)	Itzik Kitroser Runcom Technologies Ltd.2 Hachoma St. 75655 Rishon Lezion, Israel	Voice: +972-3-9528440 Fax: +972-3-9528805 mailto:itzikk@runcom.co.il
Re:	Call for Comments IEEE 802.16e-03/14 on IEEE 802.16e-03/07r2	
Abstract	This contribution is the output of the Handoff/sleep-mode ad hoc activity and contains modifications to handoff and sleep mode procedures for IEEE 802.16e-03/07r2	
Purpose	Update IEEE 802.16e-03/07r2	
Notice	This document has been prepared to assist IEEE 802.16. It is offered as a basis for discussion and is not binding on the contributing individual(s) or organization(s). The material in this document is subject to change in form and content after further study. The contributor(s) reserve(s) the right to add, amend or withdraw material contained herein.	
Release	The contributor grants a free, irrevocable license to the IEEE to incorporate material contained in this contribution, and any modifications thereof, in the creation of an IEEE Standards publication; to copyright in the IEEE's name any IEEE Standards publication even though it may include portions of this contribution; and at the IEEE's sole discretion to permit others to reproduce in whole or in part the resulting IEEE Standards publication. The contributor also acknowledges and accepts that this contribution may be made public by IEEE 802.16.	
Patent Policy and Procedures	The contributor is familiar with the IEEE 802.16 Patent Policy and Procedures < http://ieee802.org/16/ipr/patents/policy.html >, including the statement "IEEE standards may include the known use of patent(s), including patent applications, provided the IEEE receives assurance from the patent holder or applicant with respect to patents essential for compliance with both mandatory and optional portions of the standard." Early disclosure to the Working Group of patent information that might be relevant to the standard is essential to reduce the possibility for delays in the development process and increase the likelihood that the draft publication will be approved for publication. Please notify the Chair < mailto:chair@wirelessman.org > as early as possible, in written or electronic form, if patented technology (or technology under patent application) might be incorporated into a draft standard being developed within the IEEE 802.16 Working Group. The Chair will disclose this notification via the IEEE 802.16 web site < http://ieee802.org/16/ipr/patents/notices >.	

Proposed Changes to Handoff/Sleep Mode text

Itzik Kitroser

On behalf of the Handoff and Sleep-Mode ad hoc group

1. General

This contribution is the output of the Handoff/sleep-mode ad hoc activity and contains modifications to handoff and sleep mode procedures for IEEE 802.16e-03/07r2

2. Proposed changes

Note: The proposed changes are marked with strikethrough and underlined text over the current 80216e-03_07r2 draft.

1.3 Baseline Reference Model

1.3.1 Network Model for Mobile Communications

1.3.1.1 Network reference model

1.3.1.1.1 Entities

The network reference model consists of BS units covering a certain area, and connected by a backbone network. Several such networks, owned by different operators may coexist in the same service area. Each backbone network may contain centralized AAA (Authorization, Authentication and Accounting), management, provisioning or other specialized servers. Specifically, those servers responsible for authentication and service authorization are collectively referred to as ASA-server(s) and may be single, multiple, centralized or distributed. The operation of these servers with the BS and MSS is specified to the extent of defining the control messages.

Table 0b1—Mobility Related Entities

Reference Point	Elements to be Specified by 802.16E
MSS	Mobile Subscriber Station, contains MAC (CS), PHY layers
BS	Base Station Sector: a single MAC entity covers a single sector. BS, at the network side, supports functionality similar to Foreign Agent of Mobile IP working in "foreign agent care-of address" mode.
ASA Server(s)	Authentication and Service Authorization Server servicing the whole operator's network. These servers are optional, and may be implemented as a distributed entity.

Figure 0b1 shows an example of such a network, where two networks operated by different operators coexist in the same service area. BS #1 is the serving BS for the depicted MSS. BS #2 and BS #3 are neighbor BS. Should the depicted MSS move closer to BS #2, as drawn by dotted line BS #2 might be the target BS for an HO. Should the depicted MSS continue movement

Figure 0b1—Network Model Example

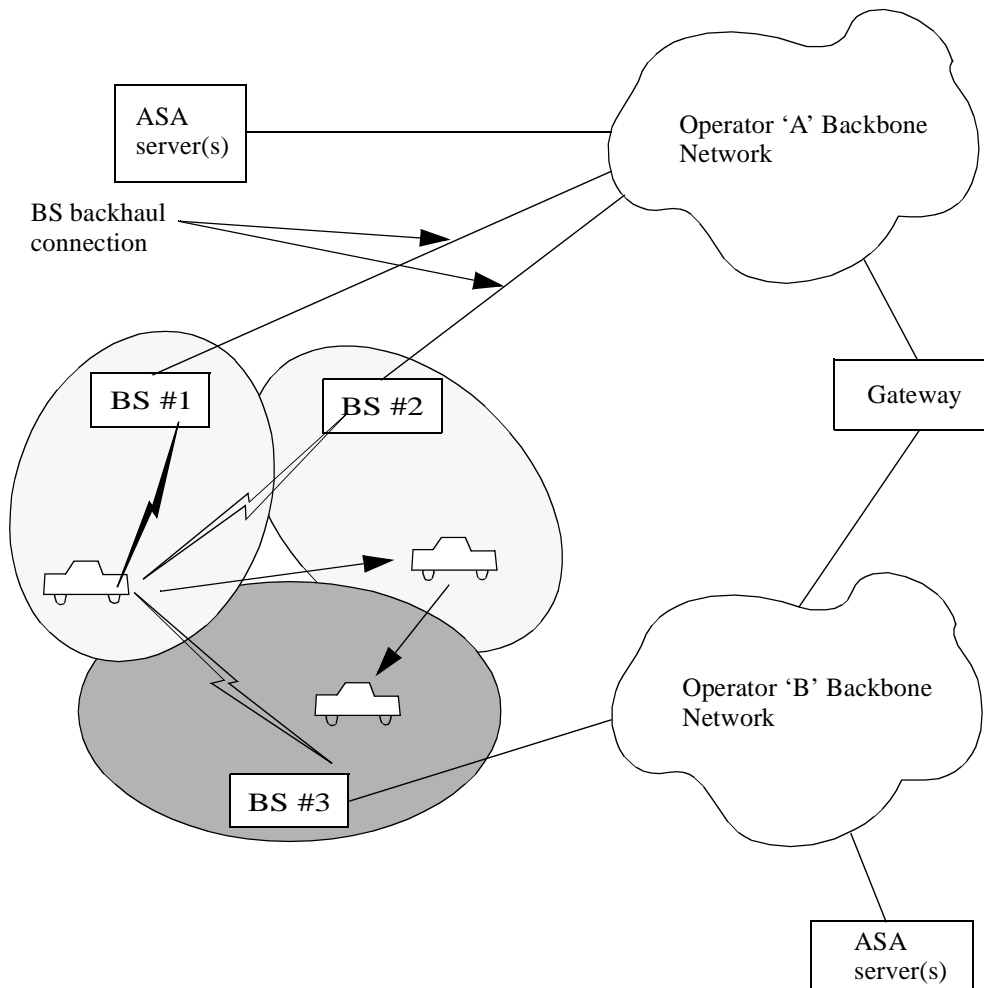
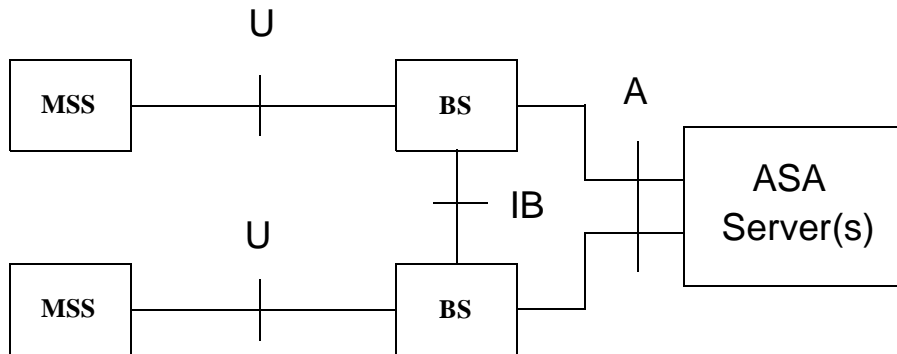


Figure 0b2 shows the network reference model in the control plane.

Figure 0b2—Network Reference Model, Control Plane



The following reference points are present at the control plane network model

Table 0b2—Reference Points at Control Plane

Reference Point	Elements to be Specified by 802.16E	Comments
U	PHY, MAC (including CS) operations, Mobility Sub-layer messages exchange	
IB	BS-to-BS messages	Transport protocol is not specified
A	Messages serving MSS authentication and service authorization functions	Transport protocol is not specified

Note: In the case a BS is implemented as a set of BS controlled by a single central controller, IB reference point is located in the controller. This makes inter-cell and intra-cell HO indistinguishable.

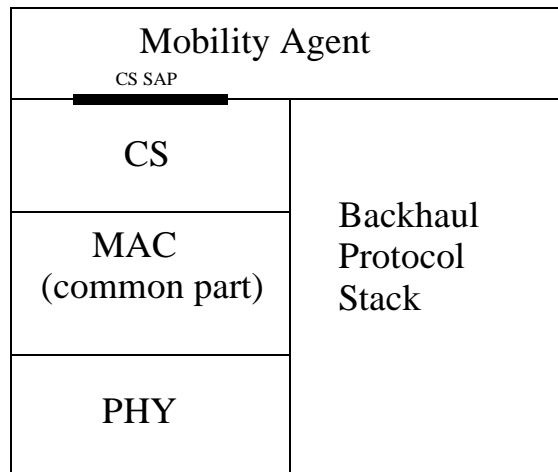
1.3.1.1.2 MSS Protocol Stack

No difference here compared to IEEE 802.16a standard.

1.3.1.1.3 BS Protocol Stack

The following picture displays BS protocol stack

Figure 0b3—BS Protocol Stack



1.3.1.1.3.1 Mobility Agent (MA) Operations

In addition to regular 802.16 layers, the stack contains Mobility Agent (MA) layer. The functions of MA are similar to functions of Foreign Agent of Mobile IP working in "foreign agent care-of address" mode. Nevertheless, we avoid direct specification of Mobile IP as a protocol that implements mobility features from the backbone side.

MA provides the following functions,

- Termination of tunnel carrying data from MSS home network including de-capsulation of incoming data units

- Communication to CS about:

- After arrival of new MSS to the cell, creation of new connections. This includes
- Creation of new classifier(s) to forward data to the connections
- Specification of proper QoS per connection
- After MS departure, deletion of connections and classifiers

1.3.1.1.4 MSS Service Context

In mobile environment certain Service Flows are provisioned for each MSS. QoS parameters are provisioned by the operator for each flow and identified by certain Service Class name. Set of Service Classes should be provisioned through upper layers (e.g. network management) at each BS and each MSS.

For each SU certain AuthorizedQoSParamSet shall be provisioned identified by the corresponding Service Class name. In the process of initial Network Entry as well as in the processes of

Association and Handover, MSS requests from the target BS certain level of QoS per Service Flow in the terms of Service Class which represents AuthorizedQoSParamSet. BS responds with name of Service Class available for the Service Flow. This Service Class will become AdmittedQoSParamSet in the case of successful Network Entry/HO.

Network Service is defined as a service provided to the MSS by the network through a single MAC connection with particular connectivity and MAC parameters (including QoS properties). Connectivity properties are defined by specification of MSS network address in its Home Network. QoS properties are those of Service Flow associated with the network service, as specified in 6.2.14.

MSS Service Context specifies the is defined as a set of network services authorized for a given MSS. It is specified by an MSS Service Context Descriptor composed of the following elements:

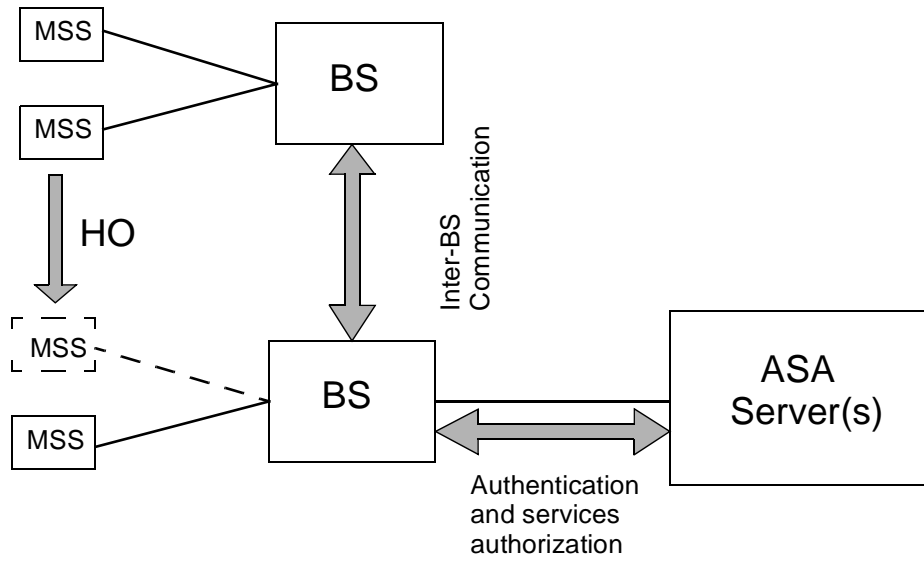
Table 0b3—MSS Service Context Descriptor

Context Element	Meaning
MSS 48-bit MAC address unique identifier	48-bit unique identifier used by MSS on initial network. This ID does not change while MSS passes from one BS to another. 48-bit universal MAC address, as specified in 6.2.1. During HO it is used to refer to specific connectivity (addressing) and properties of MAC connections (including QoS properties)
<u>Address of MSS at Home Network</u>	<u>IP address of MSS at its Home Network. This address does not change while MSS travels from one BS to another</u>
Number N of Network Service IEs	Number of Network Service Information Elements (NSIEs). Each SIE corresponds to a single data connection
N x NSIE	The structure of SIE is specified below
Number M of Security Association	Number M of Security Associations established for the MSS.
M x SAIE	TBD

Table 0b4—Service Information Element(SIE) Contents

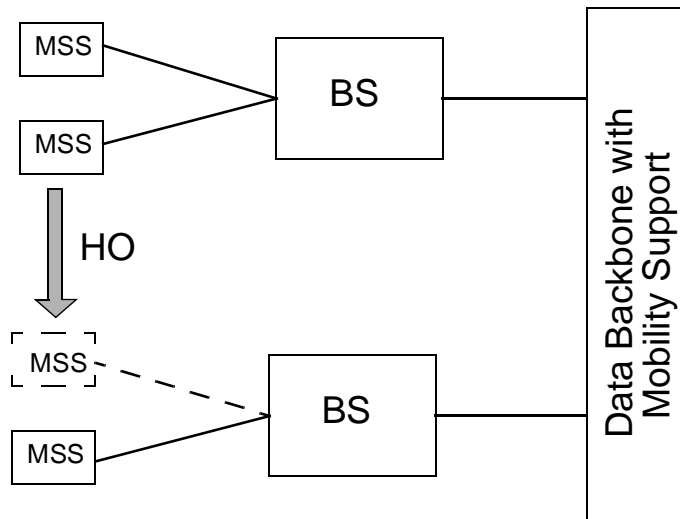
Field	Meaning
Address of MSS at Home Network	IP address of MSS at its Home Network. This address does not change while MSS travels from one BS to another. [?]
<u>Service Flow ID</u>	<u>As specified in 6.2.14.2. Service Flow ID has global meaning; it does not change in the process of handover.</u>
MAC Connection Parameters	Connection parameters as specified in , section 6.1.1.1.2, <u>MAC address should be the address of MSS; CRC request should be "On"</u>
<u>Service Class Name</u>	<u>Specifies AuthorizedQoSParamSet which is defined globally (while AdmittedQoSParamSet is defined each time in the process of handover)</u>

Figure 0b4—Network Structure (control plane) and HO



1.3.1.1.5 Transfer of Control Information During HO

Figure 0b5—Network Structure (data plane) and HO



1.3.1.2 MAC layer HO procedures

This section contains the procedures performed during HO on the air-interface.

1.3.1.2.1 Network topology acquisition

1.3.1.2.1.1 Network topology advertisement

A BS shall broadcast information about the network topology using the NBR-ADV MAC message. An MSS may decode this message to find out information about the parameters of neighbor BS. Each MSS will thus be able to synchronize quickly with neighbor BS.

1.3.1.2.1.2 MSS Scanning of neighbor BS

A BS may allocate time intervals to MSS's for the purpose of seeking and monitoring neighbor BS suitability as targets for HO. Such a time interval will be referred to as a **scanning interval**.

An MSS may request an allocation of a scanning interval using the SCN-REQ MAC message. The MSS indicates in this message the duration of time it requires for the scan, based on its PHY capabilities.

Upon reception of this message, the BS shall respond with placement of a Scanning_IE in the DL-MAP. The Scanning_IE shall either grant the requesting MSS a scanning interval that is at least as long as requested by that MSS, or deny the request. The BS may also place unsolicited Scanning_IE.

An MSS, upon detection of a Scanning_IE addressed to it in the DL-MAP, shall use the allocated interval to seek for neighbor BS. When neighbor BS are identified, the MSS shall attempt to synchronize with their downlink transmissions, and estimate the quality of the PHY connection.

1.3.1.2.1.3 Association Procedure

An MSS may use this interval for ranging as well as for the association procedure. When associating with a neighbor BS, the MSS shall not only synchronize with neighbor BS downlink, but shall also perform two additional stages called **association-initial-ranging** and **association-pre-registration**. Association-initial-ranging is performed by transmitting a RNG-REQ MAC message as specified in IEEE Std 802.16-2001 "Part 16: Air Interface for Fixed Broadband Wireless Access Systems" section 6.2.9.5 with the extensions specified in section Ranging Request/Response RNG-REQ/RSP. Upon reception of a RNG-RSP message with the **prediction of service level** parameter set to 2, the MSS marks the target BS as Associated. Information on Association is reported to the Serving BS. The target BS may store information on newly associated MSS. Association state of specific MSS at the BS shall be aged-out after ASC-AGING-TIMER timeout.

1.3.1.2.2 HO process

The section defines the HO process in which an MSS migrates from the air-interface provided by one BS to the air-interface provided by another BS. The HO process belongs to the break-before-make type and consists of the following stages:

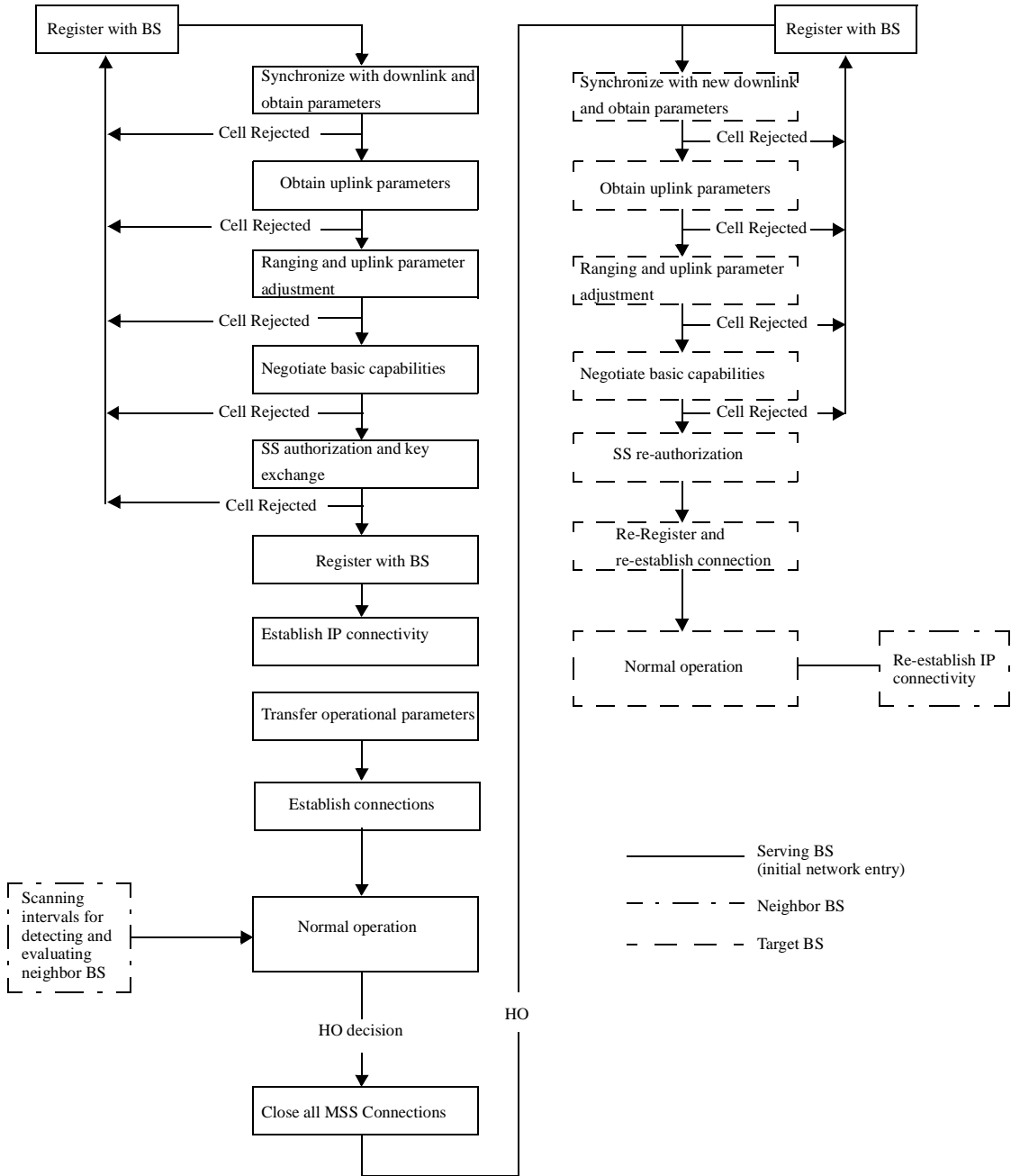
HO initiation, the decision to start the process is taken

Termination of service with the serving BS, where all connections belonging to the MSS are terminated, and the context associated with them (i.e. information in queues, ARQ state-machine, counters, timers, etc.) is discarded

Network re-entry in target BS, where the MSS re-enters the network using a fast network entry procedure. After network re-entry, connections/service flows belonging to the MSS are re-established/re-associated with newly established connections. QoS parameters of service flows (AdmittedQoSParamSet) may be different from AuthorizedQoSParamSet, based on the availability of resources in the target BS.

The HO process, and its similarity to the initial network entry process, is depicted in Figure 0b6.

Figure 0b6—HO and Initial Network Entry

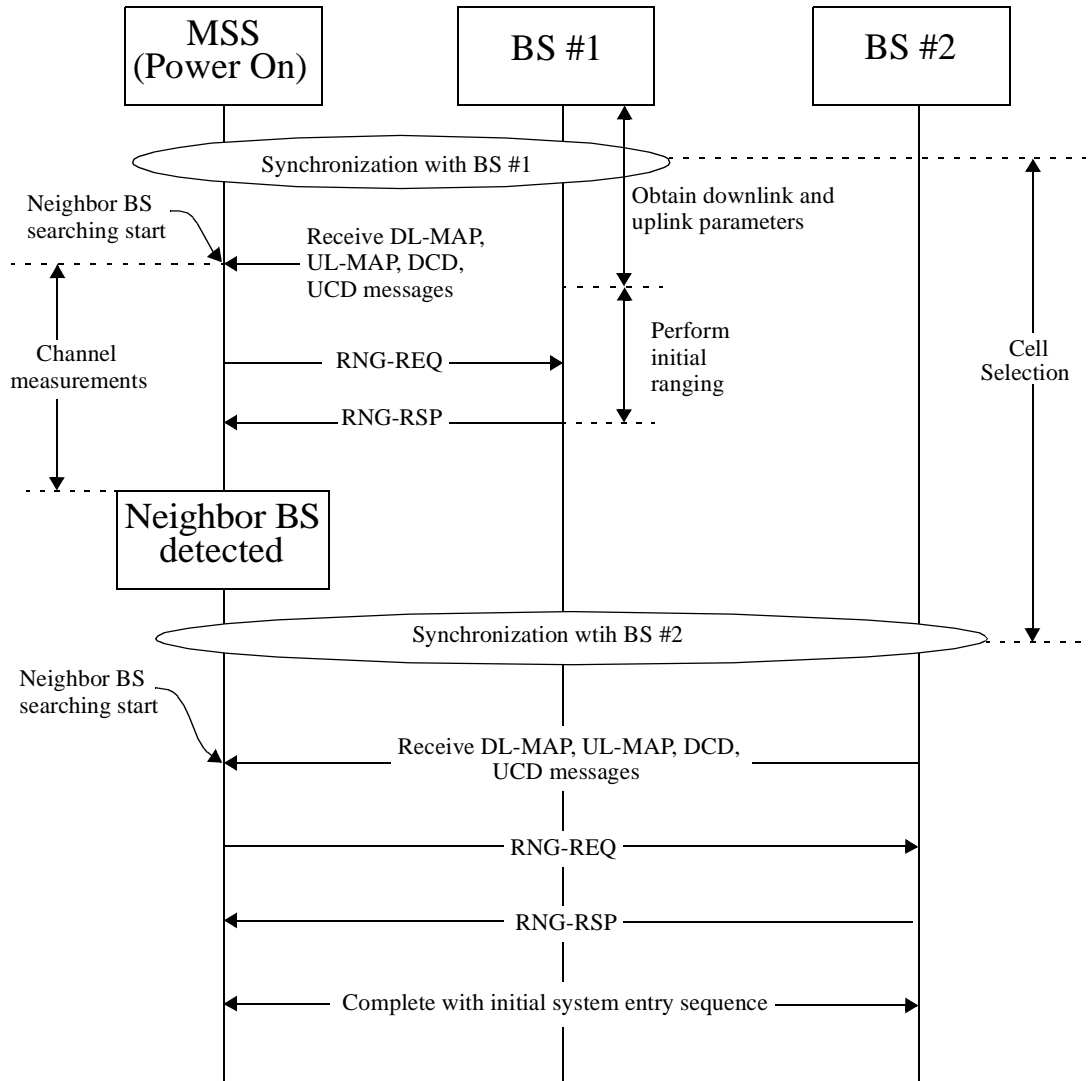


1.3.1.2.2.1 Cell Selection

Cell selection is a terminology use to refer to situations where an MSS leaves a BS before getting to the normal-operation state. Such procedure does not involve termination of existing connections and their re-opening in the target BS. An MSS may perform a cell selection if such an action is necessary with respect to its PHY signal quality. In such a

case the MSS shall restart the initial re-entry sequence or the HO sequence as applicable. No action is required from the BS during an cell selection.

Figure 0b7—Example of cell selection procedure



1.3.1.2.2.2 HO initiation

Either an MSS or a BS may initiate a HO by transmitting the MSSHO-REQ or BSHO-REQ MAC messages. It is anticipated that in most situations the MSS will be the initiator of the HO, but sometimes a BS may be the initiator of a HO to facilitate load sharing among BS.

When MSSHO-REQ is sent by an MSS, the MSS may indicate possible target BS (from signal quality point of view). When sent by a BS, the BS may indicate the recommended target BS (based on their capability to meet the MSS QoS requirements). The MSSHO-REQ message may include an indication of the estimated time for performing the HO.

At the BS side, before sending BSHO-REQ or after receiving a MSSHO-REQ message, the BS shall notify neighboring BS through the backbone of the HO request. The BS shall further acquire from the neighbor BS information regarding their capability of serving the requesting MSS. See section Ranging Request/Response RNG-REQ/RSP for specification of the communication through the backbone network, and the information exchanged between BS.

After receiving MSSHO-REQ or BSHO-REQ message, the receiving party shall respond with a HO-RSP MAC message. When sent by a BS, the HO-RSP message may indicate a recommended target BS. The MSS, at the risk that if it chooses an alternative target BS, it might receive a degraded level of service, may ignore this recommendation (this includes staying with its serving BS, i.e. skipping the HO). The HO-RSP message may also include an estimation of the time when the HO would take.

1.3.1.2.2.3 Termination with the serving BS

After the [MSS/BS]HO-REQ/HO-RSP handshake is completed, the MSS may begin the actual HO. This is done by sending a HO-IND MAC message.

Upon reception of a HO-IND MAC message, the BS may close all connections and discard MAC state machines and MPDUs associated with the MSS.

1.3.1.2.3 Drops and corrupted HO attempts

A drop is defined as the situation where an MSS has stopped communication with its serving BS (either in the downlink, or in the uplink) before the normal HO sequence outlined in Cell Selection and Termination with the serving BS has been completed.

An MSS can detect a drop by its failure to demodulate the downlink, or by exceeding the RNG-REQ retries limit allowed for the periodic ranging mechanism. A BS can detect a drop by exceeding the RNG-REQ retries limit allowed for the periodic ranging mechanism.

When the MSS has detected a drop, it shall attempt network re-entry with its preferred target BS as outlined in section Re-entry with the target BS. When the BS has detected a drop, it shall react as if a HO-IND MAC message has been received from the dropped MSS.

1.3.1.2.3.1 Re-entry with the target BS

When re-entry with the target BS takes place, the target BS as well as all neighbor BS are aware of the HO in progress (except in a drop situation). At re-entry, the MSS performs the steps as shown in Figure 0b6.

1.3.1.2.3.1.1 Synchronize with downlink and obtain parameters

For MSS that have used their scanning interval to synchronize with target BS and have decoded the NBR-ADV message, this stage should be immediate. In other situations this procedure defaults to the one specified for initial network entry.

1.3.1.2.3.1.2 Obtain uplink parameters

For MSS's that have decoded the NBR-ADV message, this stage should be immediate. In other situations this procedure defaults to the one specified for initial network entry.

1.3.1.2.3.1.3 Ranging and uplink parameters adjustment

For MSS's that have used their scanning interval to do ranging with target BS this stage should be immediate. Otherwise, this stage is similar to the one performed at initial network entry. During this stage the MSS is assigned a new basic and primary management CID in the target BS.

As opposed to initial network entry, where this stage is performed on contention basis, here the ranging opportunity may be allocated individually by the BS based on an MSS's 48-bit MAC address identifier. This identifier is forwarded to the target BS via the backbone network (see section Backbone network HO procedures). This is done using the Fast_UL_ranging_IE() (see Fast ranging (Paging) Information Element) in the UL-MAP. When an initial ranging opportunity is not allocated individually, this procedure defaults to the one specified for initial network entry.

1.3.1.2.3.1.4 Negotiate basic capabilities

This stage is identical to the one performed during initial network entry.

1.3.1.2.3.1.5 MSS re-authorization

During this stage the MSS performs the re-authorization part of the PKM protocol used at initial network entry (see IEEE Std 802.16-2001 "Part 16: Air Interface for Fixed Broadband Wireless Access Systems" section 7.2). The BS authenticates the user and as the security context has not changed (it is transferred from the old BS via backbone, see section Backbone network HO procedures) the security sub-layer can continue in normal operation.

[More details should be provided here]

1.3.1.2.3.1.6 Re-register and re-establish provisioned connections

This stage is equivalent to several stages performed during initial network entry. In this stage the MSS re-registers with the BS, and receives on the registration response a conversion table that maps the connections it had with its previous serving BS to a new set of connections on the current serving BS. In doing so, the MSS skips the **establish-IP-connectivity** stage, where it is assigned an IP address for management purposes. This stage is not really skipped during HO, instead it is postponed until the normal-operation stage is reached. The **transfer-operational-parameters** and the **time-of-day establishment** stage are skipped as none of the information contained in the configuration file, nor the time-of-day is expected to change.

The MSS attempts the re-registration by sending the normal REG-REQ MAC message. At this stage the MSS has already provides its 48-bit MAC address identifier, and the BS can recognize that the MSS is performing a HO. The BS REG-RSP shall therefore include TLV values for re-establishing the provisioned connections (see section REG-RSP TLVs for connection re-establishment).

1.3.1.2.3.1.7 Commence Normal Operation

At this stage, normal operation commences. The MSS shall re-establish its IP connectivity as specified at initial network entry. Figure <INSERT HERE> shows how a complete HO process might look like in the time domain.

1.3.1.2.4 HO completion

[This section should discuss the following:

Post HO operations (mostly applicable if make-before-break HO is supported)

]

[Text should be provided to 1.3.1.2.4 clause]

1.3.1.3 Setup and negotiations

[This section should discuss the following:

- Setup and negotiation procedures related to the HO
- PHY dependent parameters and associated handshake
- The model for coexistence of fixed and mobile-SS on the same air-interface instance

[Text should be provided to 1.3.1.3 clause]

[This text should be added to section 6.2.2.3.6 in IEEE Std 802.16-2001 “Part 16: Air Interface for Fixed Broadband Wireless Access Systems”]

3.2.2 Serving BS

For any mobile subscriber station (MSS), the serving BS is the BS with which the MSS has recently performed registration at initial network-entry or during an HO.

3.2.3 Target BS

The BS that an MSS intends to be registered with at the end of a HO.

3.2.4 Neighbor BS

For any MSS, a neighbor BS is a BS whose downlink transmission can be demodulated by the MSS.

3.2.5 Monitored BS

A BS that is monitored by the MSS during its scanning interval.

3.2.6 Selected BS

A subset of Monitored BS, which is selected as potential Target BS.

3.69 Mobile Subscriber Station (MSS)

A subscriber station that supports communications while in motion.

3.70 Handoff (HO)

The process in which an MSS migrates from the air-interface provided by one BS to the air-interface provided by another BS. Two HO variants are defined:

- Hard HO: A HO where service with the new BS starts after a disconnection of service with the old BS.
- Soft HO: A HO where service with the new BS starts before disconnection of the service with the old BS.

3.71 Scanning Interval

A time period intended for monitoring neighbor BS by the MSS, to determine their suitability as targets for HO.

3.72 Mobility Agent (MA):

A higher layer agent which is responsible for mobility.

6. MAC sublayer—common part

6.1.3 MAC Service Definition for Mobility Support

6.1.3.1 Primitives for Communication Between CS and MA

6.1.3.1.1 MA to CS: CS_CREATE_CONNECTION.request

6.1.3.1.1.1 Function

6.1.3.1.1.2 Semantics of the service primitive

6.1.3.1.1.3 When generated

Generated to trigger creation of new connection servicing a newly arrived MSS; specifies classifier(s) to forward data to the connections and QoS parameters for the connection

6.1.3.1.1.4 Effect of receipt

[TBD Parameters]

6.1.3.1.2 MA to CS: CS_CREATE_CONNECTION.response

6.1.3.1.2.1 Function

6.1.3.1.2.2 Semantics of the service primitive

6.1.3.1.2.3 When generated

6.1.3.1.2.4 Effect of receipt

[TBD Parameters]

6.1.3.1.3 MA to CS: CS_TERMINATE_CONNECTION.request/response

6.1.3.1.3.1 Function

6.1.3.1.3.2 Semantics of the service primitive

6.1.3.1.3.3 When generated

Generated to trigger termination of connection(s) after an MSS leaves the cell

6.1.3.1.3.4 Effect of receipt

[TBD Parameters]

6.1.3.1.4 MA to CS: CS_SDU.request

6.1.3.1.4.1 Function

6.1.3.1.4.2 Semantics of the service primitive

6.1.3.1.4.3 When generated

Generated to send an SDU to MAC

6.1.3.1.4.4 Effect of receipt

[TBD Parameters]

6.1.3.1.5 CS to MA: CS_MSS_ARRIVAL.indication

6.1.3.1.5.1 Function

Signals MSS arrival at the cell

6.1.3.1.5.2 Semantics of the service primitive

6.1.3.1.5.3 When generated

6.1.3.1.5.4 Effect of receipt

[TBD Parameters]

6.1.3.1.6 CS to MA: CS_MS_DEPARTURE.indication

6.1.3.1.6.1 Function

Signals MSS departure from the cell

6.1.3.1.6.2 Semantics of the service primitive

6.1.3.1.6.3 When generated

6.1.3.1.6.4 Effect of receipt

[TBD Parameters]

6.1.3.1.7 CS to MA: CS_SDU.indication

6.1.3.1.7.1 Function

6.1.3.1.7.2 Semantics of the service primitive

6.1.3.1.7.3 When generated

Generated to signal arrival of an SDU from the backhaul connection

6.1.3.1.7.4 Effect of receipt

[TBD Parameters]

[Parameters should be provided to all primitives]

6.2.2.3.40 Sleep Request message (MOB_SLP-REQ)

SS supporting sleep-mode uses the MOB_SLP-REQ message to request permission from the BS to enter sleep-mode. The MOB_SLP-REQ message is sent from the SS to the BS on the SS's basic CID.

Table 56aa—Sleep-Request (MOB_SLP-REQ) message format

Syntax	Size	Notes
SLP-REQ_Message_Format() {		
Management message type = 45	8 bit	
min-sleeping interval	6 bit	
max-sleeping window	10 bit	
listening interval	8 bit	
}		

Parameters shall be as follows:

Min window

Requested start value for the sleep interval (measured in MAC frames).

Max window

Requested stop value for the sleep interval (measured in MAC frames).

Listening interval

Requested listening interval (measured in MAC frames).

6.2.2.3.41 Sleep Response message (MOB_SLP-RSP)

The MOB_SLP-RSP message shall be sent from BS to an SS on the SS's basic CID in response to an MOB_SLP-REQ message. The SS shall enter sleep-mode using the parameters indicated in the message.

Table 56ab—Sleep-Response (MOB_SLP-RSP) message format

Syntax	Size	Notes
MOB_SLP-RSP_Message_Format() {		
Management message type = 46	8 bit	

Sleep-approved	1 bit	0: Sleep-mode request denied 1: Sleep-mode request approved
If (Sleep-approved == 0) {		
Reserved	7 bit	
} else {		
Start-time	7 bit	
min-sleeping window	6 bit	
max-sleeping window	10 bit	
listening interval	8 bit	
}		
}		

Parameters shall be as follows:

Sleep approved

Defines whether or not the request to enter sleep-mode has been approved by the BS.

Start-time

The number of MAC frames (not including the frame in which the message has been received) until the SS shall enter the first sleep-interval.

Min window

Start value for the sleep interval (measured in MAC frames).

Max window

Stop value for the sleep interval (measured in MAC frames).

Listening interval

Value for the listening interval (measured in MAC frames).

6.2.2.3.42 Traffic Indication message (MOB_TRF-IND)

This message is sent from BS to SS on the broadcast CID. The message is intended for SS's that are in sleep-mode, and is sent during those SS's listening-intervals. The message indicates whether there has been traffic addressed to each SS that is in sleep-mode. An SS that is in sleep-mode during its listening-interval shall decode this message to seek an indication addressed to itself.

When an SS awakens, it will check the frame number to ensure that it did not lose frame synchronization with the BS, if it does not find any positive indication in the MOB_TRF-IND message, it will consider this as a negative indication and shall return to sleep mode.

Table 56ac—Traffic-Indication (MOB_TRF-IND) message format

Syntax	Size	Notes
TRF-IND_Message_Format() {		
Management message type = 47	8 bit	
Num-positive	8 bit	
for (i=0; i< Num-positive; i++) {		

CID	16 bit	Basic CID of the SS
}		
}		

Parameters shall be as follows:

Num-positive

Number of CIDs on the positive indication list.

[This text should be added to section 6.2.2.3.5 in IEEE Std 802.16-2001 "Part 16: Air Interface for Fixed Broad-band Wireless Access Systems"]

CID at MAC Header – Shall always be the Initial Ranging CID.

An MSS may use the RNG-REQ message in its scanning interval for associating with a neighbor BS. When associating with a neighbor BS, the MSS shall send the RNG-REQ message with the following TLV parameters,

SS MAC Address – A 48-bit unique identifier for the MSS.

MSS Association Channel ID – An identifier of the downlink channel on which the MSS is currently registered. This is an 8-bit field. The downlink channel identifier should be unique networkwide.

[This text should be added to section 6.2.2.3.6 in IEEE Std 802.16-2001 "Part 16: Air Interface for Fixed Broad-band Wireless Access Systems"]

When a BS sends a RNG-RSP message in response to a RNG-REQ message containing an **MSS Association Channel ID TLV**, the BS may include the following TLV parameter in the RNG-RSP message,

Service Level Prediction - This value indicates the level of service the MSS can expect from this BS. The following encodings apply:

0 = No service possible for this MSS.

1 = Some service is available for one or several Service Flow authorized for the MSS.

2 = For each authorized Service Flow a MAC connection can be established with QoS specified at ASA server (for the MSS identified by the 48-bit MAC address) is available by the AuthorizedQoSParamSet.

Service Level prediction may be accompanied by a number of Service Flow Encodings as specified in 11.4.8 with the following parameters only:

- Service Class Name
- Service Flow Identifier

Service class name may refer either to AuthorizedQoSParamSet (then Service Level Prediction should be encoded as '2') or to a subset of it (then Service Level Prediction should be encoded as '1')

~~This is an 8-bit field.~~

The following TLVs shall be included in the REG-RSP for MSS's recognized by the BS through their 48-bit MAC address (provided in the RNG-REQ message) as MSS's that are performing HO,

CID_updtac – The CID_update is a TLV value that provides a shorthand method for renewing a connection used in the previous serving BS. The TLV specifies a CID in the new serving BS that shall replace a CID used in the previous serving BS. All the service flows and parameters associated with the old CID remain unchanged. (See).

Connection_Info – The Connection_Info is a compound TLV value that encapsulates the **Service Flow Parameters** and the **CS Parameter Encodings** TLVs allowed on the DSA-RSP. This TLV enables the new serving BS to renew a connection used in the previous serving BS, but with different QoS settings.

[add the following new MAC messages after section 6.2.2.3.42]

6.2.2.3.43 Neighbor Advertisement (MOB_NBR-ADV) message

An NBR-ADV message shall be broadcasted by a BS at a periodic interval () to define the characteristics of neighbor BS.

Table 56ad—MOB_NBR-ADV Message Format

Syntax	Size	Notes
MOB_NBR-ADV_Message_Format() {		
Management Message Type = 48	8 bits	
Configuration Change Count	<u>8 bits</u>	
N_NEIGHBORS	8 bits	
For (j=0 ; j<N_NEIGHBORS ; j++) {		
Neighbor BS-ID	48 bits	
Configuration Change Count	<u>8 bits</u>	
Physical Frequency	32 bits	
TLV Encoded Neighbor information	Variable	TLV specific
}		
}		

A BS shall generate MOB_NBR-ADV messages in the format shown in Table 56ad. The following parameters shall be included in the MOB_NBR-ADV message,

N_Neighbors – Number of advertised neighbor BS

For each advertised neighbor BS, the following parameters shall be included:

Neighbor BS-ID – Same as the **Base Station ID** parameter in the DL-MAP message of neighbor BS

Configuration Change Count – Incremented by one (modulo 256) whenever any of the values relating to ~~this any~~ neighbor BS change. If the value of this count in a subsequent MOB_NBR-ADV message remains the same, the MSS can quickly to disregard the ~~TLV-encoded information~~ entire message.

Physical Frequency – DL center frequency (kHz).

All other parameters are coded as TLV value (see TBD).

For each advertised neighbor BS, the following TLV parameters may be included,

DCD_settings – The DCD_settings is a compound TLV value that encapsulates a DCD message that may be transmitted in the advertised BS downlink channel. This information is intended to enable fast synchronization of the MSS with the advertised BS downlink. The DCD_settings fields shall contain only neighbor's DCD TLV values which are different from the serving BS corresponding values, for values that are not included, the MSS shall assume they are identical to the serving BS's corresponding values.

UCD_settings – The UCD_settings is a compound TLV value that encapsulates a UCD message that may be transmitted in the advertised BS downlink channel. This information is intended to enable fast synchronization of the MSS with the advertised BS uplink. The UCD_settings fields shall contain only neighbor's UCD TLV values which are different from the serving BS corresponding values, for values that are not included, the MSS shall assume they are identical to the serving BS's corresponding values.

6.2.2.3.44 Scanning Interval Allocation Request (MOB_SCN-REQ) message

A MOB_SCN-REQ message may be transmitted by an MSS to request a scanning interval for the purpose of seeking neighbor BS, and determining their suitability as targets for HO.

An MSS shall generate MOB_SCN-REQ messages in the format shown in Table 56ae:

Table 56ae—MOB_SCN-REQ Message Format

Syntax	Size	Notes
MOB_SCN-REQ_Message_Format() {		
Management Message Type = 49	8 bits	
Scan Duration	16 bits	Units are <u>MAC</u> frames.
}		

~~An MSS shall generate MOB_SCN-REQ messages in the format shown in Table 56ae. The following parameters shall be included in the MOB_SCN-REQ message,~~

~~**Scan Duration**—The requested period of time for the scan. The units are PHY dependent, as specified in—~~

Scan Duration

Duration (in units of MAC frames) of the requested scanning period

6.2.2.3.45 Scanning Interval Allocation Response (MOB_SCN-RSP) message

A MOB_SCN-RSP message shall be transmitted by the BS in response to an MOB_SCN-REQ message sent by an MSS.

The format of the MOB_SCN-RSP message is depicted in Table 56af.

Table 56af—MOB_SCN-RSP Message Format

<u>Syntax</u>	<u>Size</u>	<u>Notes</u>
MOB_SCN-RSP Message Format() {		
<u>Management Message Type = 50</u>	<u>8 bits</u>	
<u>Number of Elements</u>	<u>8 bits</u>	
for (i=0; i<Number of Elements; i++) {		
<u>CID</u>	<u>16 bits</u>	
<u>Scan Start</u>	<u>8 bits</u>	
<u>Scan Duration</u>	<u>8 bits</u>	<u>Units are MAC frames</u>
}		
}		

Number of Elements

Number of Scan Allocation elements

CID

Basic CID of the MSS that have sent MOB_SCN_REQ message.

Scan Start

Offset (in units of MAC frames) to the start of the scanning interval from the current MAC frame. A value of 0 means that the BS has rejected the scanning request of the MSS.

Scan Duration

Duration (in units of MAC frames) where the MSS may scan for neighbor BS.

6.2.2.3.46 BS HO Request (MOB_BSHO-REQ) message

The BS may transmit a MOB_BSHO-REQ message when it wants to initiate an HO. The message shall be transmitted on the basic CID.

Table 56ag—MOB_BSHO-REQ Message Format

<u>Syntax</u>	<u>Size</u>	<u>Notes</u>
MOB_BSHO-REQ_Message_Format() {		
Management Message Type = <u>51</u>	8 bits	
N_Recommended	8 bits	
For (j=0 ; j<N_NEIGHBORS ; j++) {		
Neighbor BS-ID	48 bits	
}		
}		

A BS shall generate MOB_BSHO-REQ messages in the format shown in Table 56ag. The following parameters shall be included in the MOB_BSHO-REQ message,

N_Recommended – Number of recommended neighbor BS

For each recommended neighbor BS, the following parameter shall be included,

Neighbor BS-ID – Same as the Base Station ID parameter in the DL-MAP message of neighbor BS

6.2.2.3.47 MSS HO Request (MOB_MSSHO-REQ) message

The MSS may transmit an MOB_MSSHO-REQ message when it wants to initiate an HO. The message shall be transmitted on the basic CID.

Table 56ah—MOB_MSSHO-REQ Message Format

Syntax	Size	Notes
MOB_MSSHO-REQ_Message_Format() {		
Management Message Type = 52	8 bits	
N_Recommended	8 bits	
For (j=0 ; j<N_NEIGHBORS ; j++) {		
Neighbor BS-ID	48 bits	
BS S/(N+I)	8 bits	
}		
}		

An MSS shall generate MOB_MSSHO-REQ messages in the format shown in Table 56ah. The following parameters shall be included in the MOB_MSSHO-REQ message,

N_Recommended – Number of recommended neighbor BS

For each recommended neighbor BS, the following parameters shall be included,

Neighbor BS-ID – Same as the **Base Station ID** parameter in the DL-MAP message of neighbor BS

BS S/(N + I) – This parameter indicates the signal to noise and interference ratio measured by the MSS from the particular BS. The value shall be interpreted as an unsigned byte with units of 0.25dB.

6.2.2.3.48 HO Response (MOB_HO-RSP) message

Either an MSS or a BS shall transmit an MOB_HO-RSP message upon reception of MOB_HO-REQ message. The message shall be transmitted on the basic CID.

Table 56ai—MOB_HO-RSP Message Format

Syntax	Size	Notes
MOB_HO-RSP_Message_Format() {		
Management Message Type = 53	8 bits	
Estimated HO time	8 bits	
N_Recommended	8 bits	
For (j=0 ; j<N_NEIGHBORS ; j++) {		
Neighbor BS-ID	48 bits	
BS rating	8 bits	This parameter exists only when the message is sent by the BS
}		
}		

A BS or MSS shall generate MOB_HO-RSP messages in the format shown in Table 56ai. The following parameters shall be included in the MOB_HO-RSP message,

Estimated HO time – Estimated number of MAC frames until the HO will take place. A value of zero in this parameter signifies that this parameter should be ignored.

N_Recommended – Number of recommended neighbor BS

For each recommended neighbor BS, the following parameters shall be included,

Neighbor BS-ID – Same as the **Base Station ID** parameter in the DL-MAP message of neighbor BS

BS rating – This parameter exists only when the BS sends the MOB_HO-RSP message. The parameter indicates the relative level to which the target BS could meet the MSS QoS requirements. A value of zero in this parameter signifies that this parameter should be ignored. [Need a clear definition of this field]

6.2.3.49 HO Indication (MOB_HO-IND) message

An MSS shall transmit a MOB_HO-IND message for final indication that it is about to perform a HO. The message shall be transmitted on the basic CID.

Table 56aj—MOB_HO-IND Message Format

Syntax	Size	Notes
MOB_HO_IND_Message_Format() {		
Management Message Type = 54	8 bits	
TLV Encoded Information	Variable	TLV specific
}		

An MSS shall generate MOB_HO-IND messages in the format shown in Table 56aj. If Privacy is enabled, the MOB_HO-IND message shall include the following TLV value,

HMAC Tuple (see 11.4.10 in IEEE 802.16-2001) – The HMAC Tuple Attribute contains a keyed Message digest (to authenticate the sender).

[Add under 6.2.14.4]

c) In mobile environment pre-provisioned Service classes shall be used by an operator to identify a set of QoS parameters, which are assigned to certain Service Flows by provisioning. When MSS passes from one BS to another, it negotiates with new BS desired level of QoS in the terms of Service Classes.

6.2.16 Sleep-mode for mobility-supporting SS

6.2.16.1 Introduction

Sleep-mode is a mode in which SS's supporting mobility may power down. Sleep-mode is intended to enable mobility-supporting SS's to minimize their energy usage while staying connected to the network. Implementation of power-save mode is optional.

An SS that supports sleep-mode can be in one of two modes:

- Awake
- Sleep

When an SS is in awake-mode, it is receiving and transmitting PDUs in a normal fashion. When the SS is in a sleep-mode, it does not send or receive PDUs. In sleep-mode the SS may power down.

Two intervals are defined:

Sleep-interval

A time duration, measured in whole MAC frames, where the SS is in sleep-mode. During consecutive sleep periods the sleep-interval shall be updated using an exponentially increasing algorithm with adjustable minimum and maximum limits.

Listening-interval

Length, measured in whole frames, of the listening interval. During this interval the SS shall decide whether to stay awake or go back to sleep based on an indication from the BS. The Listening-interval duration is negotiated between the BS and the SS.

Before entering sleep-mode the SS shall inform the BS and obtain its approval. The BS may buffer (or it may drop) incoming PDUs addressed to the sleeping SS, and shall send notification to the SS in its awakening periods about whether data has been addressed for it.

An SS shall awake according to the sleep-interval and check whether there were PDUs addressed for it. If such PDUs exist, it shall remain awake. An SS may terminate sleep-mode and return to awake-mode anytime (i.e. there is no need to wait until the sleep-interval is over). If the BS receives an MPDU from an SS that is supposed to be in sleep-mode, the BS shall assume that the SS is no longer in sleep-mode.

Traffic indication message (TRF-IND) shall be sent by the BS on the broadcast CID periodically. If the number of positive indications is zero, the BS sends an empty indication message, that is, TRF-IND message with num-positive=0.

When its sleep-interval timeouts, the SS shall awake to listen to the DL transmissions until it receives a TRF-IND message. If there is a positive indication to the SS, it shall remain awake. Otherwise, the SS may return to its sleep-mode.

In this way, the listening interval parameter is no longer needed to be negotiated between SS and BS in the SLP-REQ and SLP-RSP messages. The interval between two TRF-IND messages sent by the BS is the maximum listening interval for all SS's supporting sleep-mode. It can be sent in the SLP-RSP message only.

6.2.16.2 Sleep-interval update algorithm

An SS shall enter sleep-mode after receiving an SLP-RSP message from the BS. In the first time it enters sleep-mode, it shall use the min-sleeping window value for the sleep interval. If during the following listening interval the BS has not signaled that traffic has been addressed for the SS, the SS shall re-enter sleep-mode and double the duration of the sleep-interval. This procedure shall be repeated as long as the resulting sleep-interval does not exceed the max-sleeping window value.

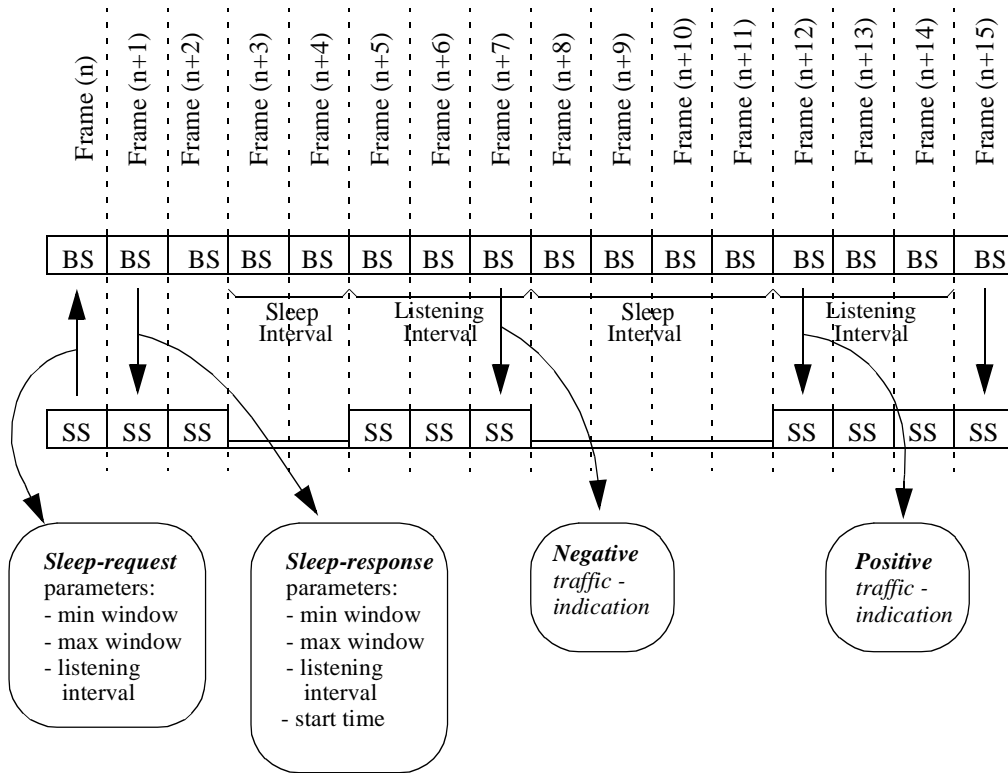
6.2.16.3 Traffic indication signaling

A BS shall notify each SS in sleep-mode, during its listening-interval, if traffic has been addressed to it.. The indication is sent on the TRF-IND broadcast message. The SS shall examine the MAC frame number from the PHY Synchronization Field and shall verify its synchronization with the BS. If the expected MAC frame number is different than found frame number, the SS shall return into awake mode.

If the SS did not find any positive indication with its CID in the TRF-IND it shall consider this as a negative indication and shall continue in sleep mode. For example of sleep mode operation, see Annex D.

6.2.16.4 Example of sleep mode operation

Figure 59b1 Example of sleep mode operation



8. Physical layer

WirelessMAN-SCa PHY layer

[Insert the following text after section 8.3.1.4.5.2]

8.3.1.4.5.2.1 Scanning Information Element

A Scanning_IE shall be placed in the DL-MAP message by a BS in response to an SCN-REQ message sent by an MSS. The Scanning_IE shall be placed in the extend DIUC (extension code = ?) within a DL-MAP IE. A value of zero in the Scan Duration field shall be interpreted as denial of the SCN-REQ. A BS may also send an unsolicited Scanning_IE.

The format of the IE is PHY dependent as shown in Figure 116w1.

Table 116w1—SCa PHY Scanning IE Format

Syntax	Size	Notes
Scanning_IE {		
—CID	16 bits	MSS's basic CID
—Scan Start	8 bits	Offset (in units of min-slots) to the start of the scanning interval from the mini-slot boundary specified by the downlink Allocation_Start_Time
—Scan Duration	8 bits	Duration (in units of MAC frames) where the MSS may scan for neighbor BS.
}		

[Insert the following after section 8.3.1.4.5.3]

8.3.1.4.5.3.1 Fast ranging (Paging) Information Element

A Fast_UL_ranging_IE may be placed in the UL-MAP message by a BS to provide a non-contention based initial-ranging opportunity. The Fast_UL_ranging_IE shall be placed in the extend UIUC (extension code = ?) within a UL-MAP IE.

The format of the IE is PHY dependent as shown in Figure 116z1.

Table 116z1—Fast Ranging Format IE: SCa PHY

Syntax	Size	Notes
Fast_UL_ranging_IE {		
MAC address	48 bits	MSS's MAC address as provided on the RNG_REQ message on initial system entry
UIUC	4 bits	UIUC ≠ 15. A four-bit code used to define the type of uplink access and the burst type associated with that access.

Offset	12 bits	Indicates the start time, in units of minislots, of the burst relative to the Allocation Start Time given in the UL-MAP message. The time instants indicated by offsets are the transmission times of the first symbol of the burst including preamble.
Reserved	4 bits	
}		

[Insert the following after section 8.4.4.3.5]

8.4.4.3.6 Fast ranging (Paging) Information Element

A Fast_UL_ranging_IE may be placed in the UL-MAP message by a BS to provide a non-contention based initial-ranging opportunity. The Fast_UL_ranging_IE shall be placed in the extend UIUC (extension code = ?) within a UL-MAP IE.

The format of the IE is PHY dependent as shown in Figure 116ao1.

Table 116ao1—Fast Ranging Format IE: OFDM PHY

Syntax	Size	Notes
Fast_UL_ranging_IE {		
MAC address	48 bits	MSS's MAC address as provided on the RNG_REQ message on initial system entry
UIUC	4 bits	UIUC ≠ 15. UIUC ≠ 4. A four-bit code used to define the type of uplink access and the burst type associated with that access.
Duration	12 bits	The Duration indicates the length, in units of OFDM symbols, of the allocation. The start time of the first allocation shall be the Allocation Start Time given in the UL-MAP message.
Reserved	4 bits	
}		

8.4 WirelessMAN OFDM PHY layer

[Insert the following text after 8.4.5.2.4]

8.4.5.2.5 Scanning Information Element

A Scanning_IE shall be placed in the DL-MAP message by a BS in response to an SCN_REQ message sent by an MSS. The Scanning_IE shall be placed in the extend DIUC (extension code = ?) within a DL-MAP IE. A value of zero in the Scan Duration field shall be interpreted as denial of the SCN_REQ. A BS may also send an unsolicited Scanning_IE.

The format of the IE is PHY dependent as shown in <table>.

Table 116aw1—OFDM PHY Scanning IE Format

Syntax	Size	Notes
Scanning_IE †		
—CID	16 bits	MSS's basic CID
—Scan Start	8 bits	Indicates the scanning interval start time, in units of OFDM symbol duration, relative to the start of the first symbol of the PHY PDU (including preamble) where the DL-MAP message is transmitted.
—Scan Duration	8 bits	Duration (in units of MAC frames) where the MSS may scan for neighbor BS.
†		

8.5 WirelessMAN-OFDMA PHY layer

[Insert the following text after 8.5.5.2.3]

8.5.5.2.4 Scanning Information Element

A Scanning_IE shall be placed in the DL-MAP message by a BS in response to an SCN-REQ message sent by an MSS. The Scanning_IE shall be placed in the extend DIUC (extension code = ?) within a DL-MAP IE. A value of zero in the Scan Duration field shall be interpreted as denial of the SCN-REQ. A BS may also send an unsolicited Scanning_IE.

The format of the IE is PHY dependent as shown in Figure 116bo1.

Table 116bo1—OFDMA PHY Scanning IE Format

Syntax	Size	Notes
Scanning_IE †		
—CID	16 bits	MSS's basic CID
—Scan Start	8 bits	The offset of the OFDM symbol in which the scanning interval starts. Measured in OFDM symbols from the time specified by the Allocation_Start_time field in the DL-MAP
—Scan Duration	8 bits	Duration (in units of MAC frames) where the MSS may scan for neighbor BS.
†		

[Insert the following after section 8.5.5.3.4]

8.5.5.3.5 Fast ranging (Paging) Information Element

A Fast_UL_ranging_IE may be placed in the UL-MAP message by a BS to provide a non-contention based initial-ranging opportunity. The Fast_UL_ranging_IE shall be placed in the extend UIUC (extension code = ?) within a UL-MAP IE.

The format of the IE is PHY dependent as shown in Figure 116bt1.

Table 116bt1—Fast Ranging Format IE: OFDMA PHY

Syntax	Size	Notes
Fast_UL_ranging_IE {		
MAC address	48 bits	MSS MAC address as provided on the RNG_REQ message on initial system entry
UIUC	4 bits	UIUC \neq 15. A four-bit code used to define the type of uplink access and the burst type associated with that access.
OFDM Symbol offset	10 bits	The offset of the OFDM symbol in which the burst starts, the offset value is defined in units of OFDM symbols and is relevant to the Allocation Start Time field given in the UL-MAP message.
Subchannel offset	6 bits	The lowest index OFDMA subchannel used for carrying the burst, starting from subchannel 0.
No. OFDM Symbols	10 bits	The number of OFDM symbols that are used to carry the UL Burst
No. Subchannels	6 bits	The number OFDMA subchannels with subsequent indexes, used to carry the burst.
Reserved	4 bits	
}		

10. Parameters and constants

10.1 Global Values

Add the following values to table 118:

Table 118a1—Parameters and Constants

System	Name	Time Reference	Minimum Value	Default Value	Maximum Value
SS	Min_Sleep_Interval	Minimum sleeping time allowed to SS	2ms		
SS	Max_Sleep_Interval	Maximum sleeping time allowed to SS			5s

SS	Listening_Interval	The time duration during which the SS, after waking up and synchronizing with the DL transmissions, can demodulate downlink transmissions and decides whether to stay awake or go back to sleep			
----	--------------------	---	--	--	--

[Add the following values to table 118a]

Table 118a2—Parameters and Constants

System	Name	Time reference	Min. value	Default value	Max value
BS	NBR-ADV interval	Nominal time between transmission of NBR-ADV messages			1s
BS	ASC-AGING-TIMER	Nominal time for aging of MSS associations	0.1s		

10.1.0.1 Ranging Request/Response RNG-REQ/RSP

11. TLV-encodings

11.1.1.1 UCD channel encodings

[Add the following rows to table 122]

Table 122—UCD channel encoding

<u>Name</u>	<u>Type</u> <u>(1 byte)</u>	<u>Length</u> <u>(1 byte)</u>	<u>Value</u> <u>(Variable-length)</u>	<u>PHY</u> <u>scope</u>
<u>HO ranging start</u>	<u>19</u>	<u>1</u>	<u>Initial backoff window size for MSS performing initial ranging during handoff process. expressed as a power of 2. Range: 0-15 (the highest order bits shall be unused and set to 0).</u>	<u>All</u>
<u>HO ranging end</u>	<u>20</u>	<u>1</u>	<u>Final backoff window size for MSS performing initial ranging during handoff process. expressed as a power of 2. Range: 0-15 (the highest order bits shall be unused and set to 0).</u>	<u>All</u>

11.1.4 REG-RSP TLVs for connection re-establishment

[Add the following rows to table 127a]

Table 127b—REG-RSP Encodings

Name	Type (1 byte)	Length (1 byte)	Value (Variable-length)
CID_update	?	16-bits	CID in the previous serving BS
		16-bits	Replacement CID in the current serving BS
Connection_Info	?	Variable	The Connection_Info is a compound TLV value that encapsulates the Service Flow Parameters and the CS Parameter Encodings TLVs allowed on the DSA-RSP message. All the rules and settings that apply to the TLVs when used in the DSA-RSP message apply to the contents encapsulated in this TLV.

[Insert the following section after 11.1.6]

11.1.7 NBR-ADV Message Encodings

Table 127c—NBR-ADV Encodings

Name	Type (1 byte)	Length (1 byte)	Value (Variable-length)
DCD_settings	?	Variable	The DCD_settings is a compound TLV that encapsulates an entire DCD message (excluding the generic MAC header). All the rules and settings that apply to the DCD message apply to the contents encapsulated in this TLV.
UCD_settings	?	Variable	The UCD_settings is a compound TLV value that encapsulates an entire UCD message (excluding the generic MAC header). All the rules and settings that apply to the UCD message apply to the contents encapsulated in this TLV.

[Insert a new Annex]

Annex C Backbone network HO procedures

[This section should contain the procedures performed on backbone to support HO such that BS from different manufacturers are interoperable.

The section should address issues such as:

- Centralized HO controller and/or distributed decision
- The information that should be exchanged (Post-HO, Pre-HO and during HO)
- Information exchange model (publishing, on request, combined)
- The transport protocol to use
- Formal definition of the messages

]

C.1 Backbone network services

The backbone network provides a backhaul transmission path to the BS, and may provide other services at the control plane level. shows a list of services provided to the BS through backbone network. Some of these services may be provided by other means (highlighted).

Table C1—Backbone Network Services

Service	Possible methods for providing service	Comments
Backhaul for traffic	-	Transport protocol is not specified
Provide a BS with the identity of its neighbors	(1) Get info from ASA server (2) Configuration (network management)	Options (1) and (2) are really the same, the only difference is where the configuration is done
Provide a BS with the identity of the ASA server	(1) ASA server publishes its presence (2) Configuration (network management)	Message format and transport protocol need to be specified for interoperability
Advertise the fact that a certain MSS has registered with a certain BS	(1) BS notifies ASA server (2) BS notifies neighbor BS	Message format and transport protocol need to be specified for interoperability
Provide a BS information about a certain MSS	(1) ASA server provides information (2) Serving BS provides information (or network management if serving BS cannot be found)	Message format and transport protocol need to be specified for interoperability
Information exchange during HO	(1) ASA server is in the middle (2) BS to BS direct exchange	Message format and transport protocol need to be specified for interoperability

As evident from , it is possible to exchange information between BS directly or through the ASA server. In that respect the protocol used for information exchange on the backbone can regard the ASA server as another BS, and therefore no special message will be required with regards to the ASA server.

C.2 Backbone network communication primitives

The primitives described in this section may be used for communication with peer BS or with an ASA server through the backbone.

C.2.1 I-am-host-of message

This message is sent by a BS to notify other BS (or the ASA server) that a certain MSS is registered with it. The message shall be sent upon MSS registration, and periodically (TBD period). The message might trigger a neighbor BS to request more information on the MSS (either directly from the sender BS, or from the ASA server). The message contains the following information,

Table C2—I-am-host-of Message

Field	Size	Notes
Message Type = ?	8-bit	
Sender BS-ID	48-bit	Base station unique identifier (Same number as that broadcasted on the DL-MAP message)
Target BS-ID	48-bit	Base station unique identifier (Same number as that broadcasted on the DL-MAP message)
Time Stamp	32-bit	Number of milliseconds since midnight GMT (set to 0xffffffff to ignore)
Num Records	16-bit	Number of MSS identity records
For (j=0; j<Num Records; j++) {		
MSS unique identifier	48-bit	48-bit unique identifier used by MSS on initial network entry
}		
Security field	TBD	A means to authenticate this message
CRC field	32-bit	IEEE CRC-32

C.2.2 MSS-info-request message

This message may be sent from one BS to another (or to the ASA server) to request information about an MSS. Typically the message will be sent as a reaction to reception of an *I-am-host-of* message, or in cases where an MSS is trying to re-enter the network after a HO. The message contains the following information,

Table C3—MSS-info-request Message

Field	Size	Notes
Message Type = ?	8-bit	
Sender BS-ID	48-bit	Base station unique identifier (Same number as that broadcasted on the DL-MAP message)
Target BS-ID	48-bit	Base station unique identifier (Same number as that broadcasted on the DL-MAP message)
Time Stamp	32-bit	Number of milliseconds since midnight GMT (set to 0xffffffff to ignore)
Num Records	16-bit	Number of MSS identity records
For (j=0; j<Num Records; j++) {		
MSS unique identifier	48-bit	48-bit unique identifier used by MSS (as provided by the MSS or by the <i>I-am-host-of</i> message)
}		
Security field	TBD	A means to authenticate this message
CRC field	32-bit	IEEE CRC-32

C.2.3 MSS-info-response message

This message may be sent from one BS to another (or from the ASA server) to provide information about an MSS. Typically the message will be sent in response to an *MSS-info-request* message. The message contains the following information,

Table C4—MSS-info-response Message

Field	Size	Notes
Message Type = ?	8-bit	
Sender BS-ID	48-bit	Base station unique identifier (Same number as that broadcasted on the DL-MAP message)
Target BS-ID	48-bit	Base station unique identifier (Same number as that broadcasted on the DL-MAP message)
Time Stamp	32-bit	Number of milliseconds since midnight GMT (set to 0xffffffff to ignore)
Num Records	16-bit	Number of MSS identity records
For (j=0; j<Num Records; j++) {		
MSS unique identifier	48-bit	48-bit unique identifier used by MSS (as provided by the MSS or by the <i>I-am-host-of</i> message)
N_NSIE		Number of Network Service Information Elements
For (k=0; k<N_NSIE; k++) {		
Field Size	16-bit	Size of TLV encoded information field below
TLV encoded information	Variable	TLV information as allowed on a DSA-REQ MAC message
}		
N_SAIE		Number of Security Association Information Elements
For (k=0; k<N_SAIE; k++) {		
Field Size	16-bit	Size of TLV encoded information field below
TLV encoded information	Variable	TLV information as allowed on a PKM-xxx MAC messages
}		
Field Size	16-bit	Size of TLV encoded information field below
TLV encoded information	Variable	TLV information as allowed on a SBC-REQ MAC message
}		
Security field	TBD	A means to authenticate this message
CRC field	32-bit	IEEE CRC-32

C.2.4 HO-notification message

This message is sent by a BS to advertise an MSS intention to perform HO. The message is typically sent to neighbor BS to be referred in BSHO-REQ message or MSSHO-REQ message. The message serves to alert the target base stations that a HO event is going to happen. The message contains the following information,

Table C5—HO-notification Message

Field	Size	Notes
Message Type = ?	8-bit	
Sender BS-ID	48-bit	Base station unique identifier (Same number as that broadcasted on the DL-MAP message)
Target BS-ID	48-bit	Base station unique identifier (Same number as that broadcasted on the DL-MAP message)
Time Stamp	32-bit	Number of milliseconds since midnight GMT (set to 0xffffffff to ignore)
Num Records	16-bit	Number of MSS identity records
For (j=0; j<Num Records; j++) {		
MSS unique identifier	48-bit	48-bit unique identifier used by MSS (as provided by the MSS or by the <i>I-am-host-of</i> message)
Estimated Time to HO	16-bit	In milliseconds, relative to the time stamp, value 0 of this parameter indicates that no actual HO is pending
Required BW	8-bit	Bandwidth which is required by MSS (to guarantee minimum packet data transmission)
Required OoS	8-bit	<u>Name of Service Class representing AuthorizedQoSParam-Set</u> Quality of Service level — Unsolicited Grant Service (UGS) — Real-time Polling Service (rtPS) — Non-real-time Polling Service (nrtPS) — Best Effort Service (BE)
}		
Security field	TBD	A means to authenticate this message
CRC field	32-bit	IEEE CRC-32

C.2.5 HO-notification-response message

This message is sent from one BS to another BS, typically in response to a *HO-notification* message. The message serves to provide the BS that sent the *HO-notification* message with information about the level of service the MSS could expect if it transitions to this BS. The message contains the following information,

Table C6—HO-notification-response Message

Field	Size	Notes
Message Type = ?	8-bit	
Sender BS-ID	48-bit	Base station unique identifier (Same number as that broadcasted on the DL-MAP message)
Target BS-ID	48-bit	Base station unique identifier (Same number as that broadcasted on the DL-MAP message)
Time Stamp	32-bit	Number of milliseconds since midnight GMT (set to 0xffffffff to ignore)
Num Records	16-bit	Number of MSS identity records
For (j=0; j<Num Records; j++) {		
MSS unique identifier	48-bit	48-bit unique identifier used by MSS (as provided by the MSS or by the <i>I-am-host-of</i> message)
QoS Estimated	8-bit	Bandwidth which is provided by BS (to guarantee minimum packet data transmission) TBD how to set this field
BW Estimated	8-bit	Quality of Service level <ul style="list-style-type: none"> — Unsolicited Grant Service (UGS) — Real-time Polling Service (rtPS) — Non-real-time Polling Service (nrtPS) — Best Effort
ACK/NACK	1-bit	Acknowledgement or Negative acknowledgement <ul style="list-style-type: none"> — 1 is Acknowledgement which means that the neighbor BS accepts the HO-notification message from the serving BS — 0 is Negative acknowledgement which means that the neighbor BS may not accept the HO-notification message from the serving BS
}		
Security field	TBD	A means to authenticate this message
CRC field	32-bit	IEEE CRC-32

C.2.6 HO-notification-confirm message

This message is sent from one BS to another BS, typically in response to an *HO-notification-response* message. The message serves to provide the BS that sent the *HO-notification-response* message with information about the level of service and capability. The message contains the following information:

Table C7—HO-notification Message

Field	Size	Notes
Message Type = ?	8-bit	
Sender BS-ID	48-bit	Base station unique identifier (Same number as that broadcasted on the DL-MAP message)

Target BS-ID	48-bit	Base station unique identifier (Same number as that broadcasted on the DL-MAP message)
Time Stamp	32-bit	Number of milliseconds since midnight GMT (set to 0xffffffff to ignore)
Num Records	16-bit	Number of MSS identity records
For (j=0; j<Num Records; j++) {		
MSS unique identifier	48-bit	48-bit universal MAC address of the MSS (as provided to the BS on the RNG-REQ message)
QoS Estimated	8-bit	Bandwidth which is provided by BS (to guarantee minimum packet data transmission) TBD how to set this field
BW Estimated	8-bit	Quality of Service level — Unsolicited Grant Service (UGS) — Real-time Polling Service (rtPS) — Non-real-time Polling Service (nrtPS) — Best Effort Service (BE)
}		
Security field	TBD	A means to authenticate this message
CRC field	32-bit	IEEE CRC-32

~~C.2.7 Example of Backbone Network HO procedure~~

Figure C.1 Example of HO call flow by MS

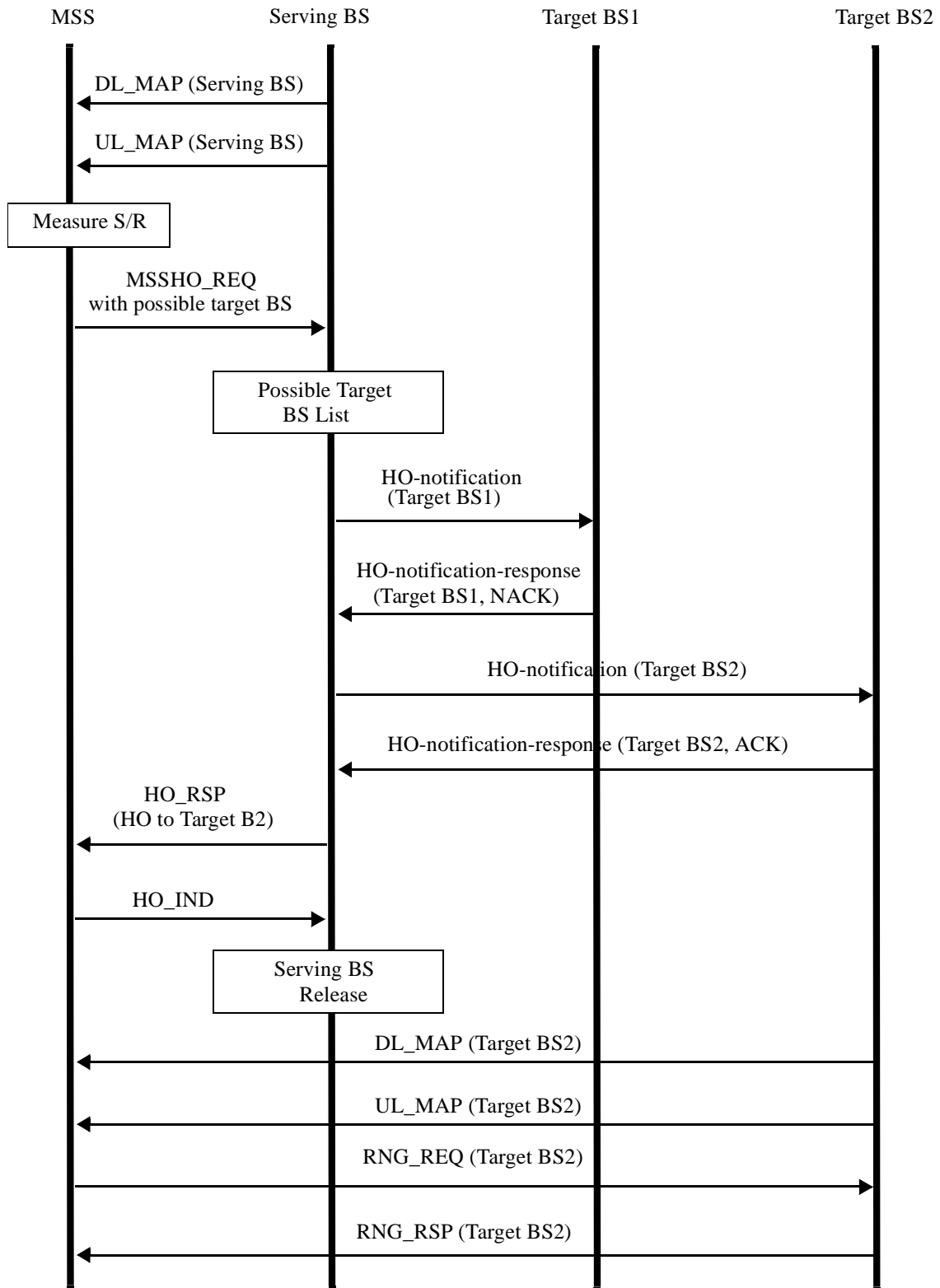
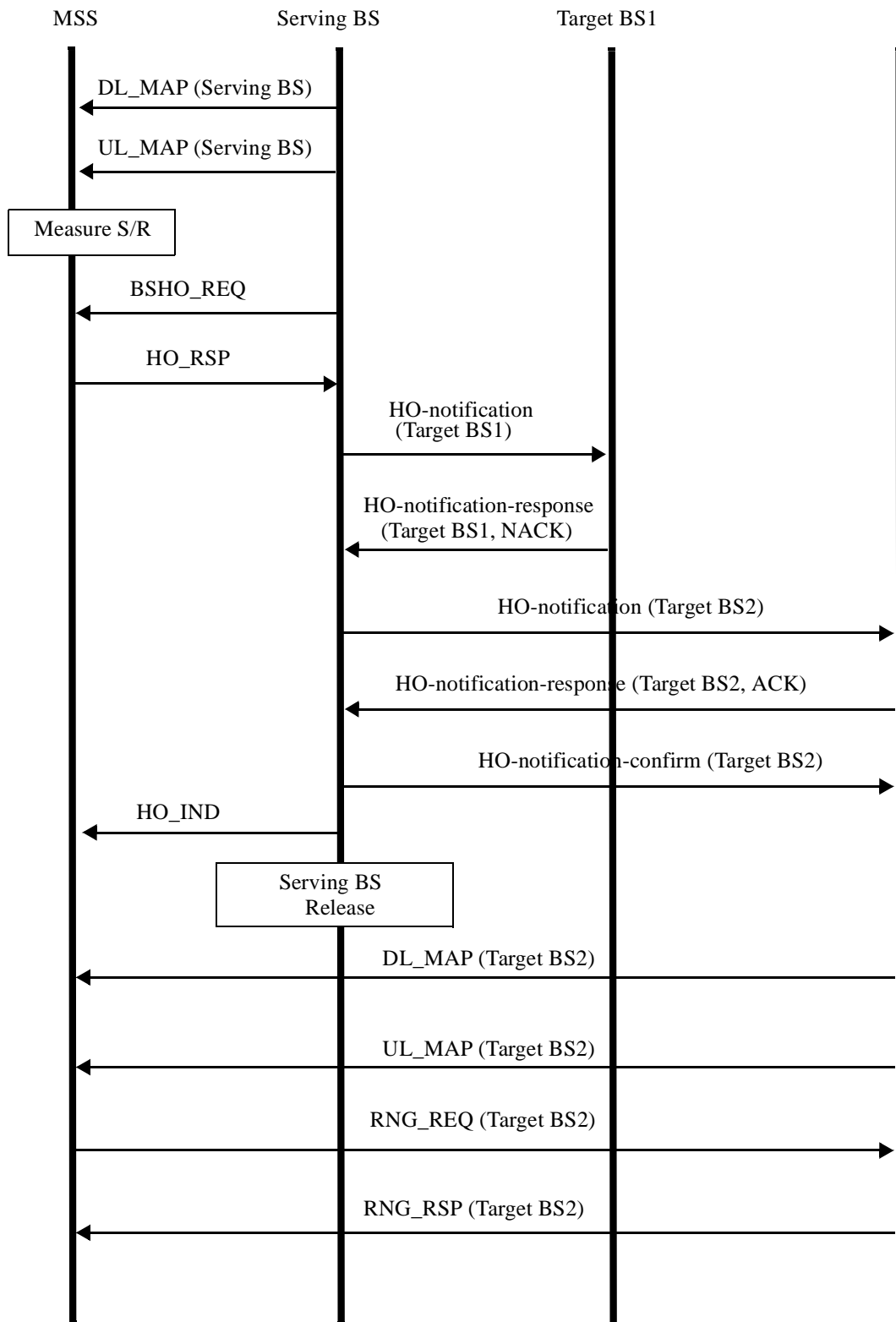


Figure C.2 Example of HO call flow by BS



C.3 Backbone network communication protocol

TBD

C.4 Convergence sub-layer HO procedures

C.4.1 Supported convergence sub-layers

[This section should discuss the types of convergence sub-layer that are supported (i.e. IPv4, IPv6, Ethernet, or others)]

C.4.2 SAP for higher layer protocols

This section defines the services between the MAC and higher layers for supporting the HO process. In some scenarios the higher layers may use information provided by the MAC layer HO process to optimize their HO process and reduce the overall HO duration.

The information is defined as set of messages sent by the MAC layer to the higher layers, providing indication of particular events before and after MAC layer HO.

C.4.2.1 MSS Movement

Occurs at the MSS, indication that the MSS has registered to a new Target BS.

C.4.2.2 Serving BS Pre-HO

Occurs at the Serving BS, indication that a MAC layer HO of a certain MSS is about to take place.

C.4.2.3 Target BS Pre-Ho

Occurs at the Target BS, indication that a MAC layer HO of a certain MSS is about to take place.

C.4.2.4 BS Post-HO

Occurs at the Target BS or MSS, indication that a MAC layer HO between the MSS and the Target BS has been completed.

C.4.2.5 Serving BS-Link Loss

Occurs at the Serving BS, indication that MAC layer link between the Serving BS and a certain MSS has been lost.

[Insert a new Annex]

Annex D Messages sequence charts (MSCs)

This annex provides MSCs for the procedures of handoff and sleep mode operations.

D.1 Handoff MSCs

D.1.1 Neighbors advertisement

The following figures describes the messages flow for neighbors advertisement and scanning of neighbors by the MSS.

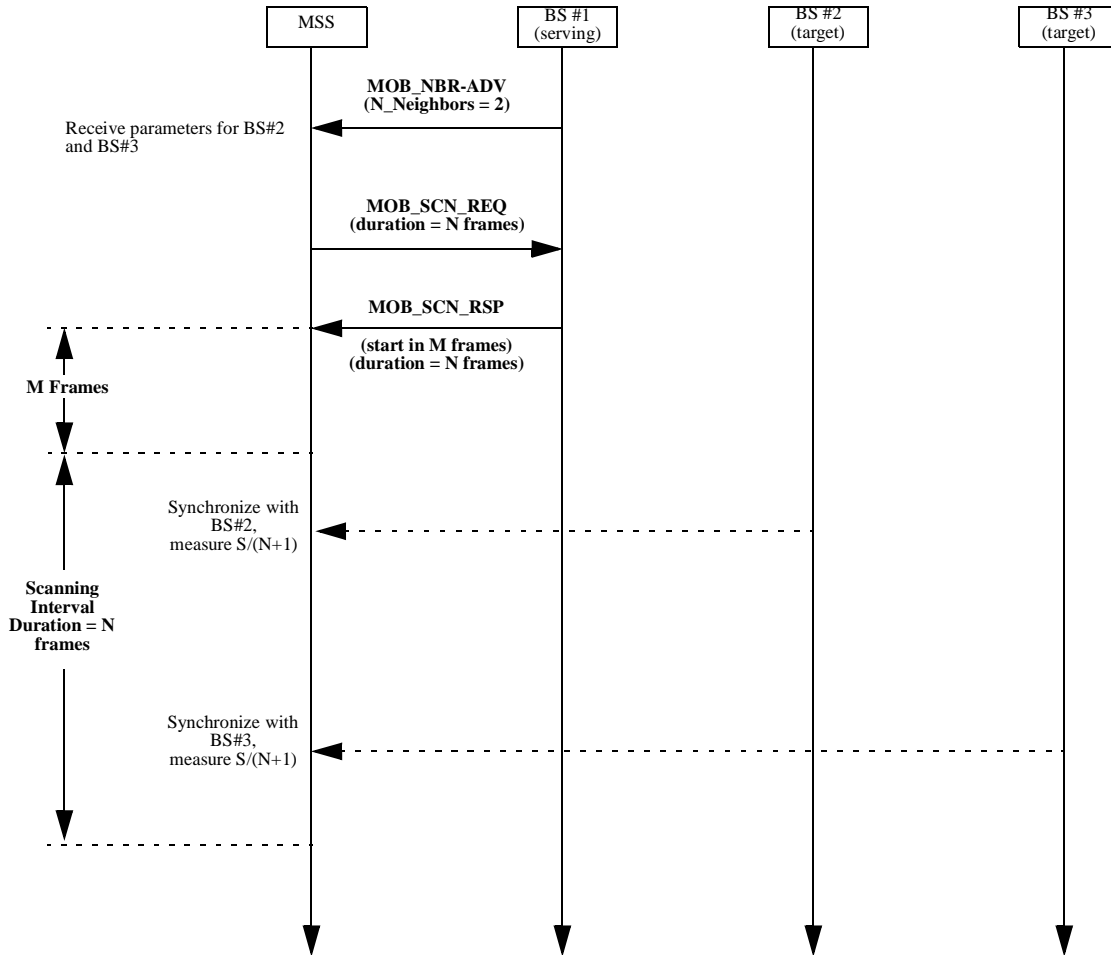


Figure D.1—Example of BS advertisement and MSS scanning (without association)

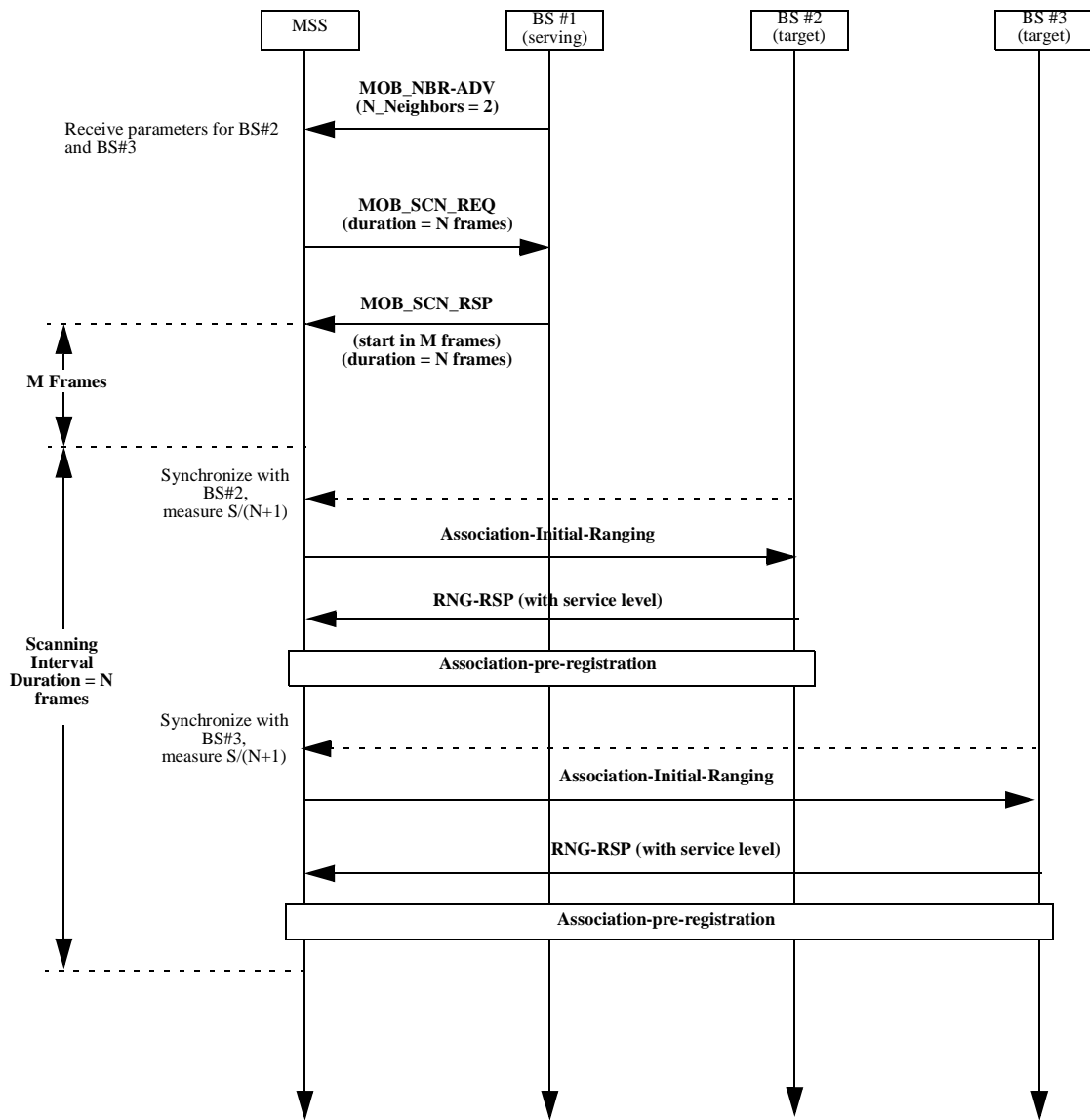


Figure D.2—Example of BS advertisement and MSS scanning (with association)

D.1.2 Handoff

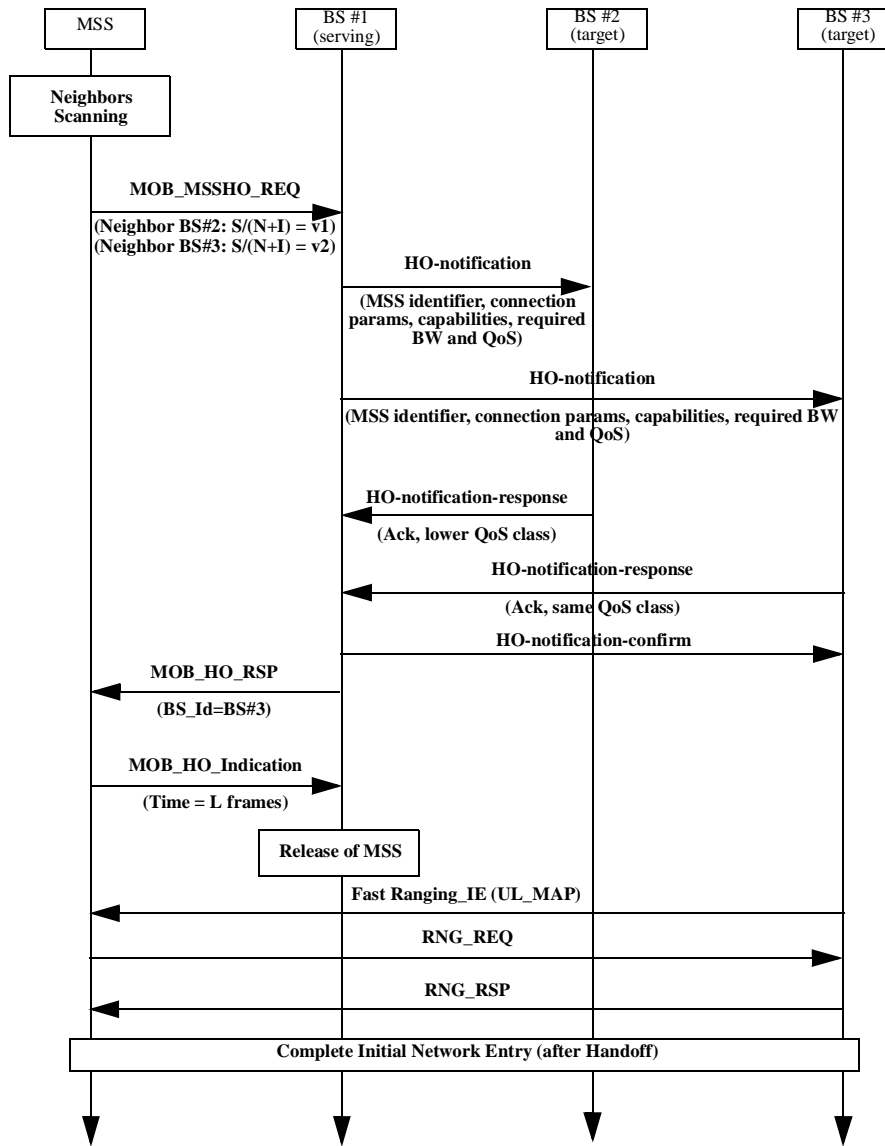


Figure D.3—BS Initiated HO

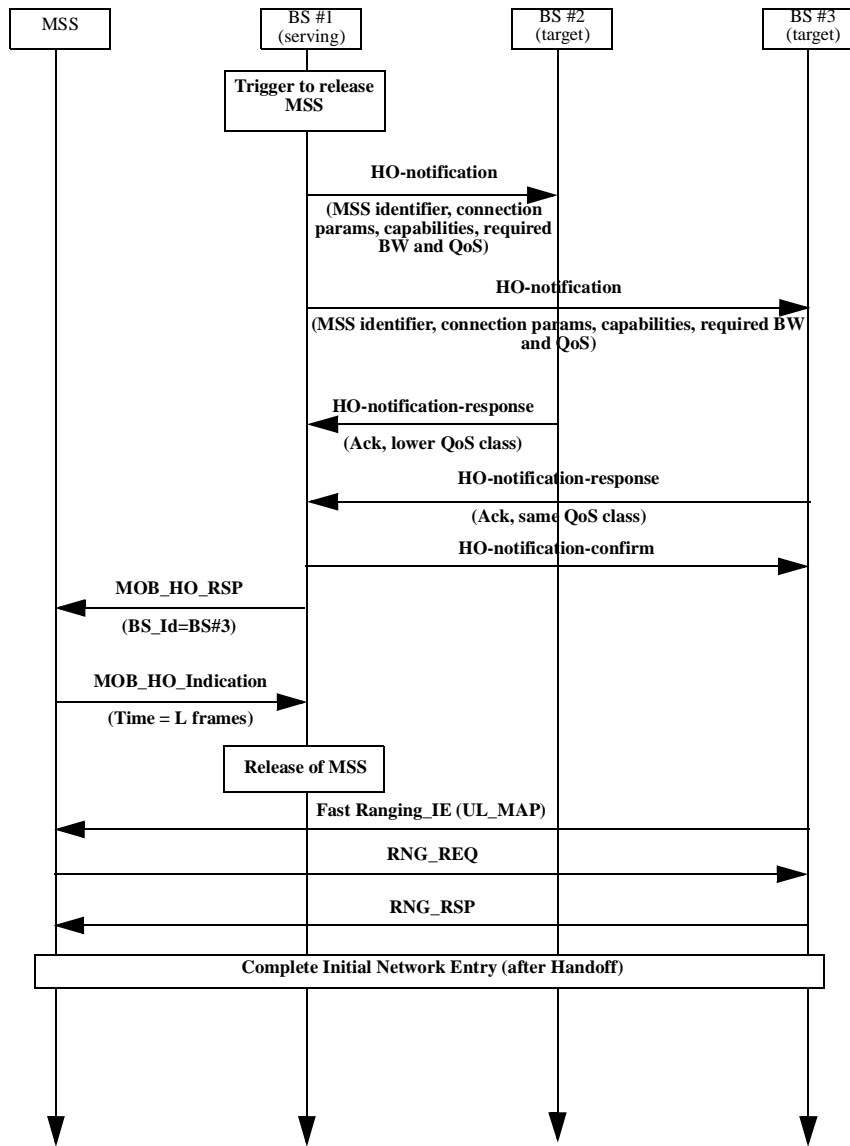


Figure D.4—MSS Initiated HO

D.2 Sleep mode MSCs

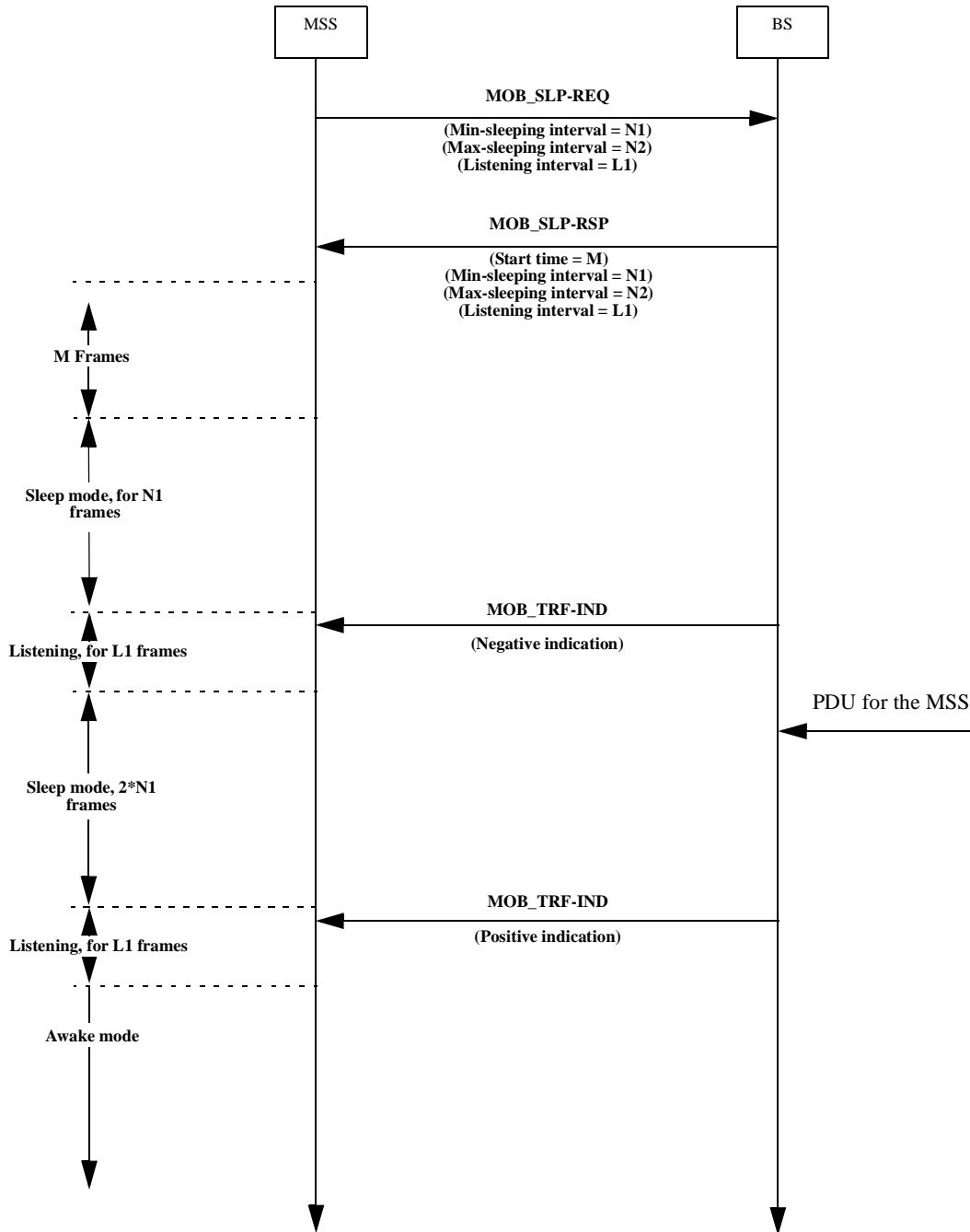


Figure D.5—Sleep mode, MSS initiated

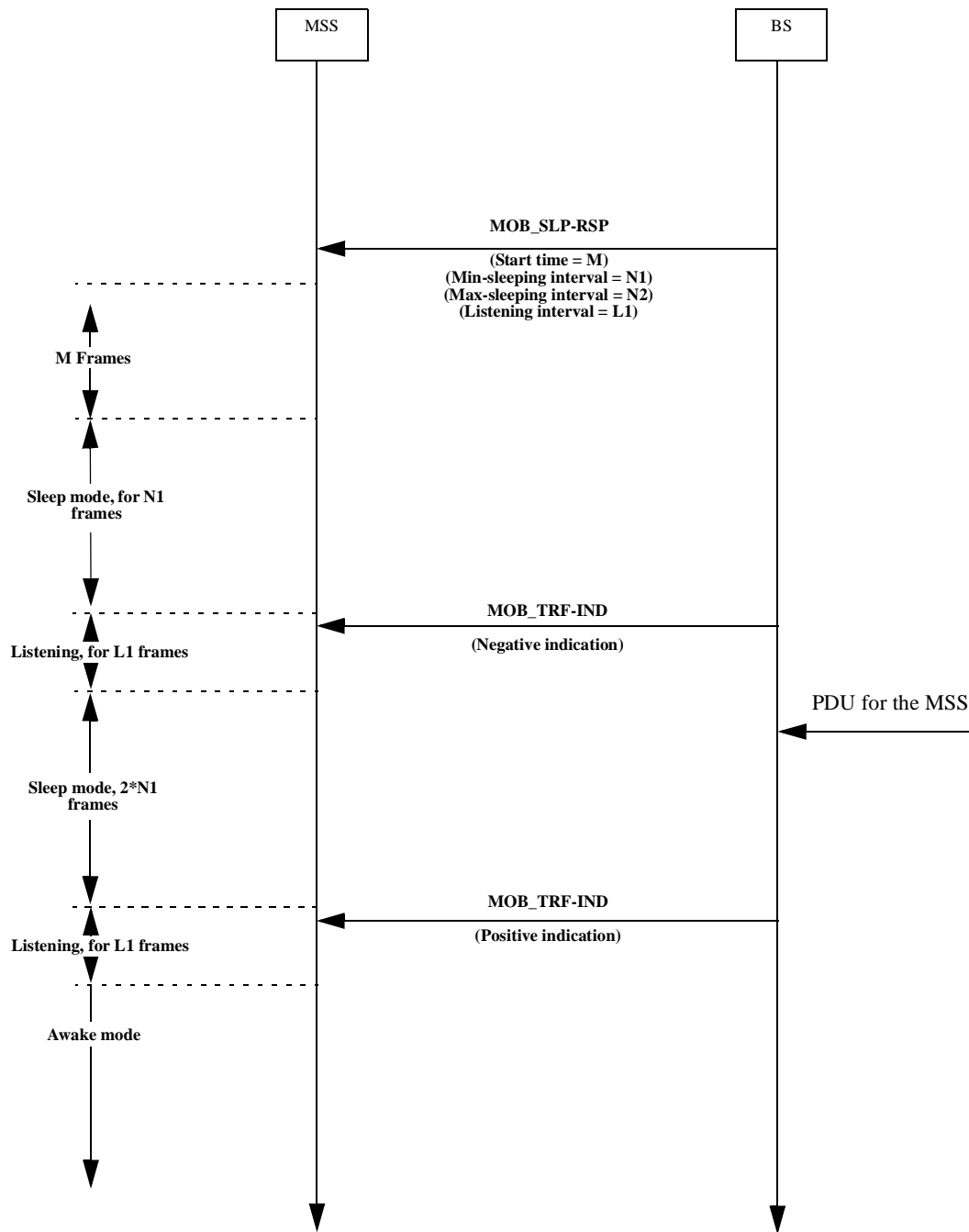


Figure D.6—Sleep mode, BS initiated

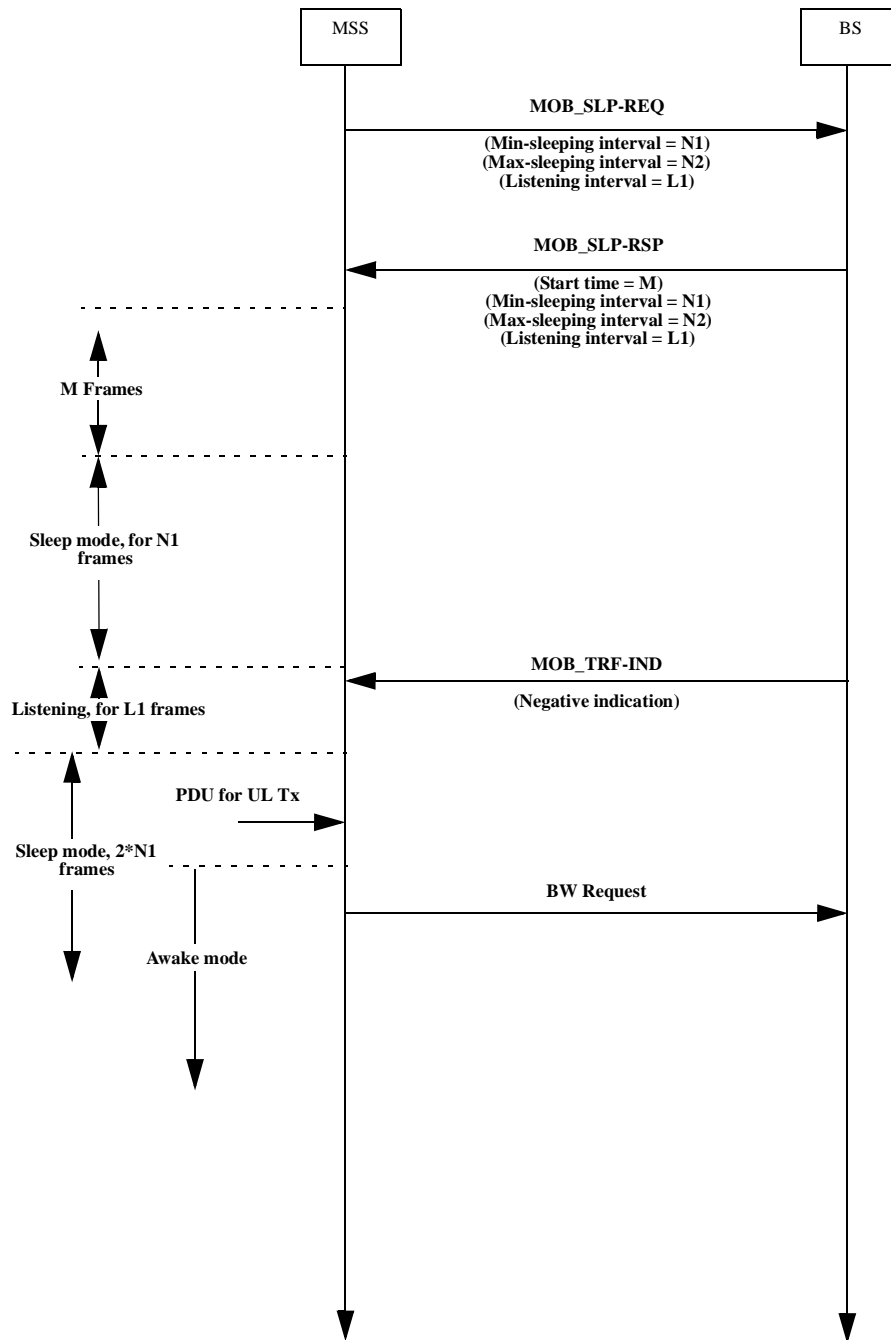


Figure D.7—Sleep mode, MSS initiating awakening