

Project	<b>IEEE 802.16 Broadband Wireless Access Working Group</b> < <a href="http://ieee802.org/16">http://ieee802.org/16</a> >	
Title	<b>Construction and Transmission of MAC PDUs for IEEE P802.16m/D4 (section 16.2.4)</b>	
Date Submitted	<b>2010-03-05</b>	
Source(s)	Yih-Guang Jan, Yang-Han Lee, Hsien-Wei Tseng, Ming-Hsueh Chuang, <i>Jheng-Yao Lin</i> <b>Tamkang University (TKU)</b>	yihjan@yahoo.com
	Youn-Tai Lee, Chun-Yen Hsu <b>Institute for Information Industry (III)</b>	lyt@nmi.iii.org.tw
	Shiann-Tsong Sheu <b>National Central University (NCU)</b>	stsheu@ce.ncu.edu.tw
	Whai-En Chen <b>National Ilan University (NIU)</b>	wechen@niu.edu.tw
Re:	IEEE 802.16 Working Group Letter Ballot #31: P802.16m/D4	
Abstract	Comments on Construction and Transmission of MAC PDUs for IEEE P802.16m/D4 (16.2.4)	
Purpose	To be discussed and adopted by TGM for IEEE P802.16m/D4.	
Notice	<i>This document does not represent the agreed views of the IEEE 802.16 Working Group or any of its subgroups. It represents only the views of the participants listed in the "Source(s)" field above. It is offered as a basis for discussion. It is not binding on the contributor(s), who reserve(s) the right to add, amend or withdraw material contained herein.</i>	
Release	The contributor grants a free, irrevocable license to the IEEE to incorporate material contained in this contribution, and any modifications thereof, in the creation of an IEEE Standards publication; to copyright in the IEEE's name any IEEE Standards publication even though it may include portions of this contribution; and at the IEEE's sole discretion to permit others to reproduce in whole or in part the resulting IEEE Standards publication. The contributor also acknowledges and accepts that this contribution may be made public by IEEE 802.16.	
Patent Policy	The contributor is familiar with the IEEE-SA Patent Policy and Procedures: < <a href="http://standards.ieee.org/guides/bylaws/sect6-7.html#6">http://standards.ieee.org/guides/bylaws/sect6-7.html#6</a> > and < <a href="http://standards.ieee.org/guides/opman/sect6.html#6.3">http://standards.ieee.org/guides/opman/sect6.html#6.3</a> >. Further information is located at < <a href="http://standards.ieee.org/board/pat/pat-material.html">http://standards.ieee.org/board/pat/pat-material.html</a> > and < <a href="http://standards.ieee.org/board/pat">http://standards.ieee.org/board/pat</a> >.	

## Construction and Transmission of MAC PDUs for IEEE P802.16m/D4

*Yih-Guang Jan, Yang-Han Lee, Hsien-Wei Tseng, Ming-Hsueh Chuang, Jheng-Yao Lin*

*Tamkang University (TKU)*

*Youn-Tai Lee, Chun-Yen Hsu*

*Institute for Information Industry (III)*

*Shiann-Tsong Sheu*

*National Central University (NCU)*

*Whai-En Chen*

*National Ilan University (NIU)*

### 1. Introduction

This contribution provides the corrected P802.16m/D4 text proposal to Construction and Transmission of MAC PDUs. In Figure 388, have some errors and correct the Table.

### 2. Proposed IEEE P802.16m/D4 Text Modification

*[In IEEE P80216m/D4, Section 16.2.4, replace Figure 388 by the following corrected Figure]*

=====Start of Proposed Text=====

16.2.4 Construction and Transmission of MAC PDUs

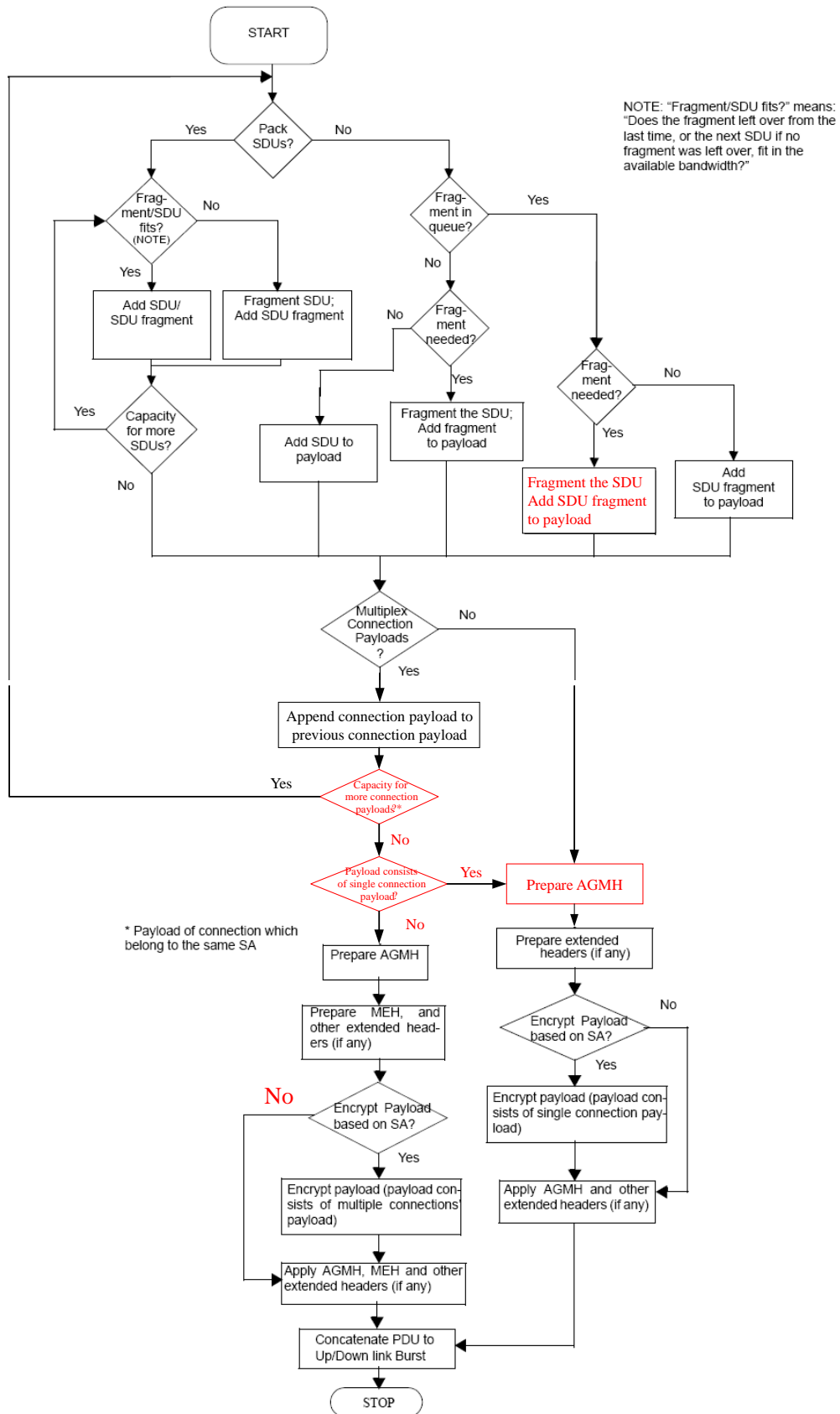


Figure 388—Construction of a MAC PDU for transport connections

=====*End of Proposed Text*=====