

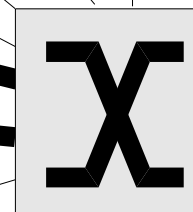
SRP in the Enterprise

Denton Gentry
Senior Staff Engineer
Sun Microsystems, Inc.

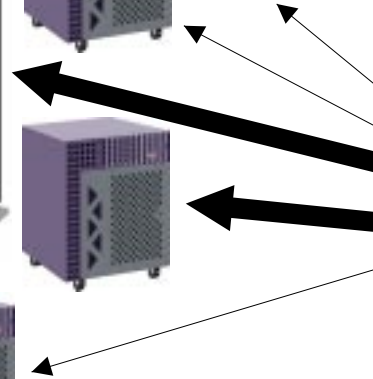
WAN and Metro networks



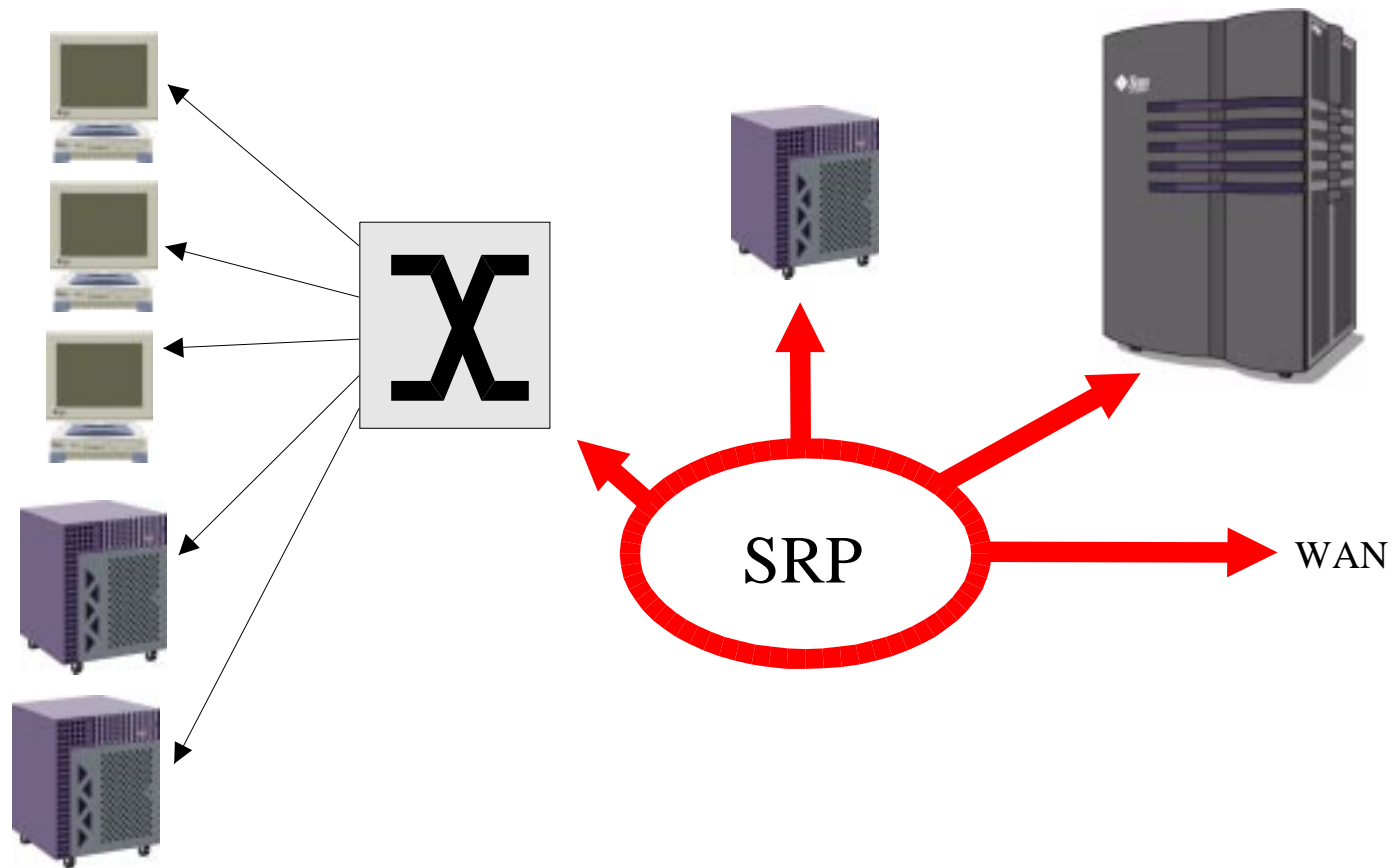
OC-48



OC-48



WAN and Metro networks



Campus/backbone networks

What is important?

- **Redundancy and robustness**
- **Flexibility in wiring**
- **Large MTU (think backups)**
- **Clear migration path to higher bandwidth**
- **Reasonable price per port**

Other solutions: FDDI, ATM, gigabit ethernet, FC