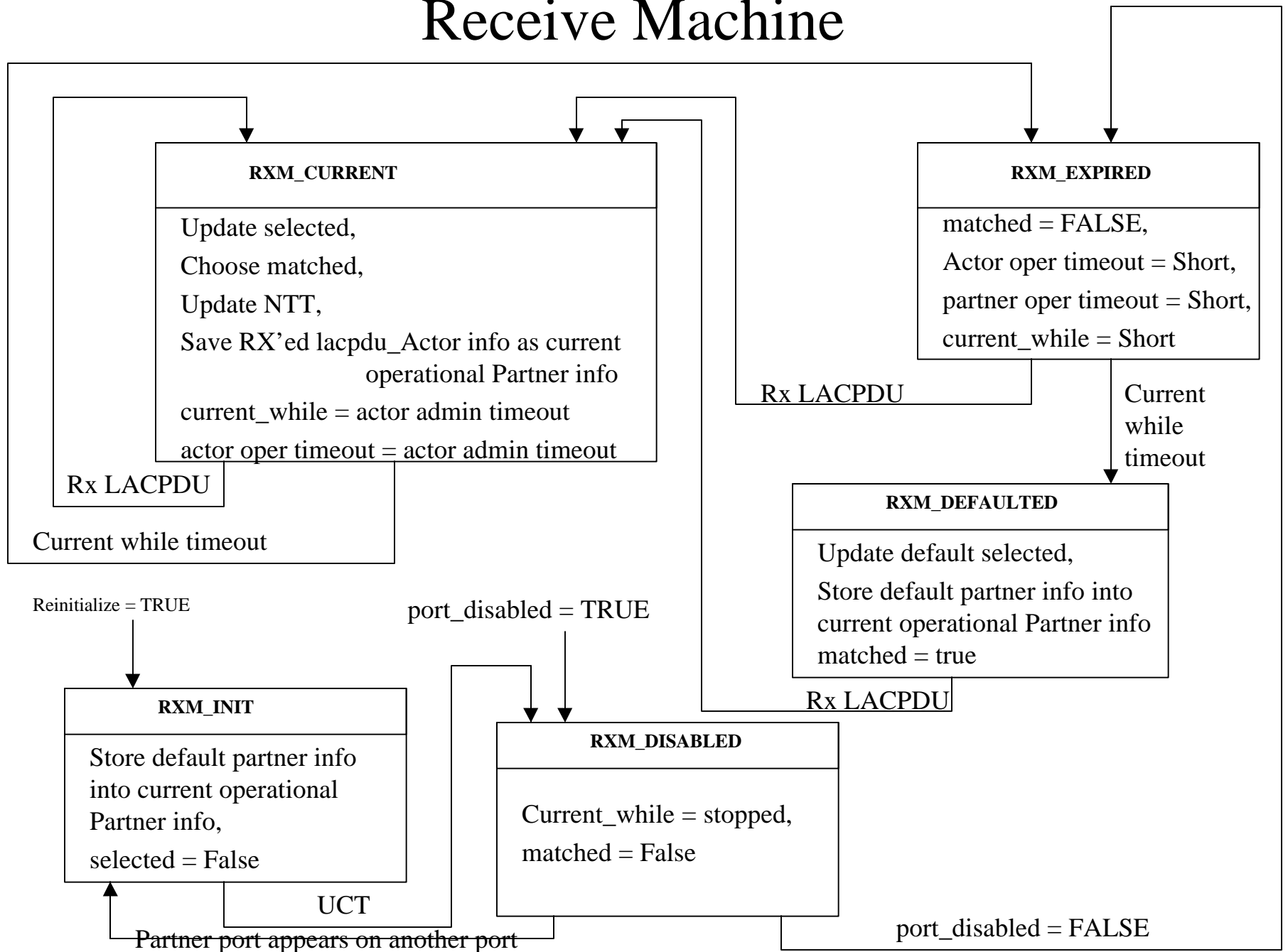


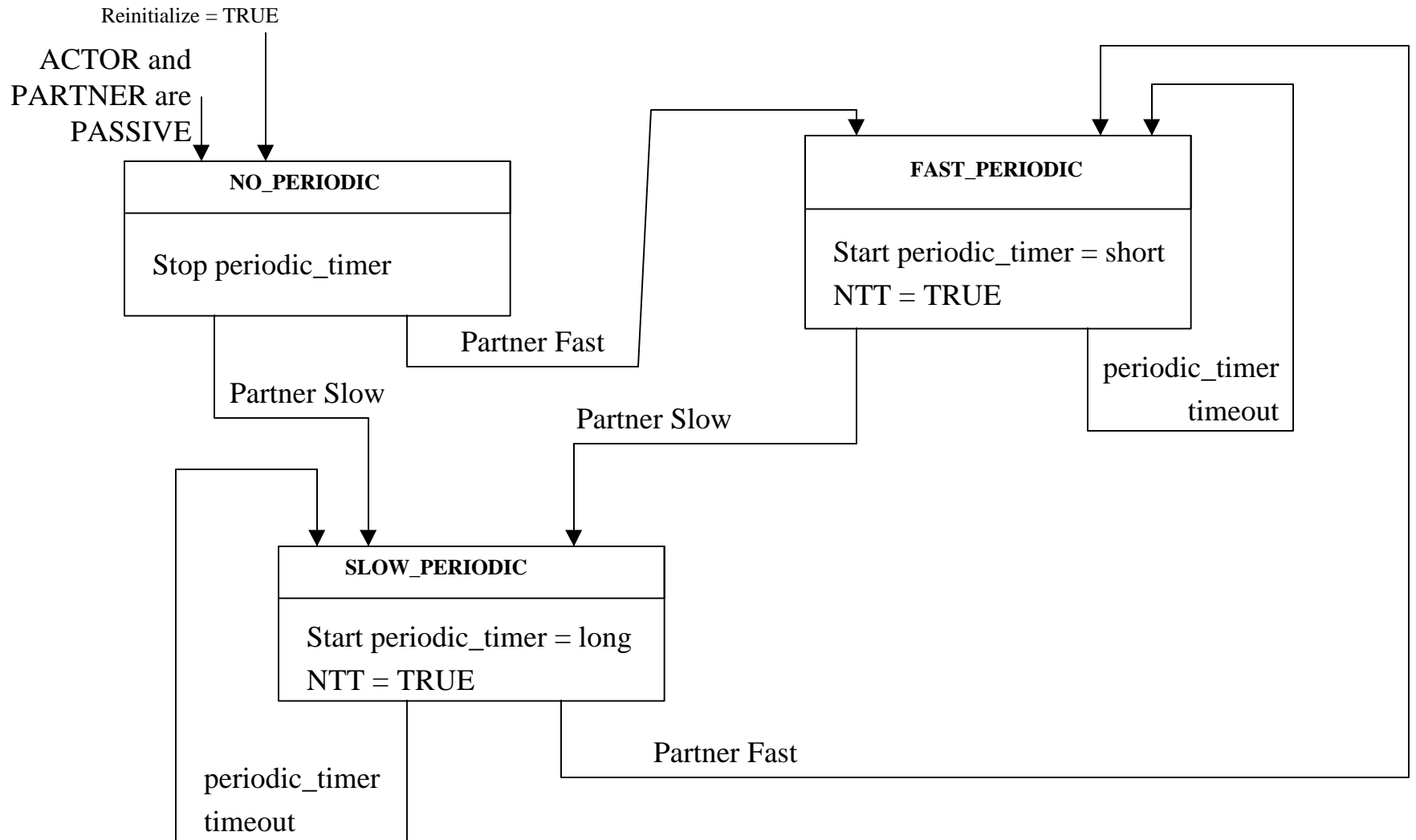
Receive Machine



RX machine Cont.)

- Update selected ::= if the received PDU actor information {Port Number, Port Priority, SystemID, System priority, Key and Aggregate flag} are not equal to the partner information then selected=FALSE. Else don't change selected.
- Update default selected ::= if the management set default actor information {Port Number, Port Priority, SystemID, System priority, Key and Aggregate flag} are not equal to the partner information then selected=FALSE. Else don't change selected.
- Choose matched ::= IF the received PDU partner information {Port Number, Port Priority, SystemID, System priority, Key and Aggregate flag} are equal to the actors operational information then matched = TRUE;
ELSE if the received PDU actor Aggregation flag is set to Individual then matched = TRUE.
ELSE matched = FALSE.
- Update NTT ::= if the received PDU partner information {Port Number, Port Priority, SystemID, System priority, Key and Aggregate flag} are not equal to the actors operational information then NTT = TRUE. Else don't change NTT.

Periodic Transmission



Selection Machine

