

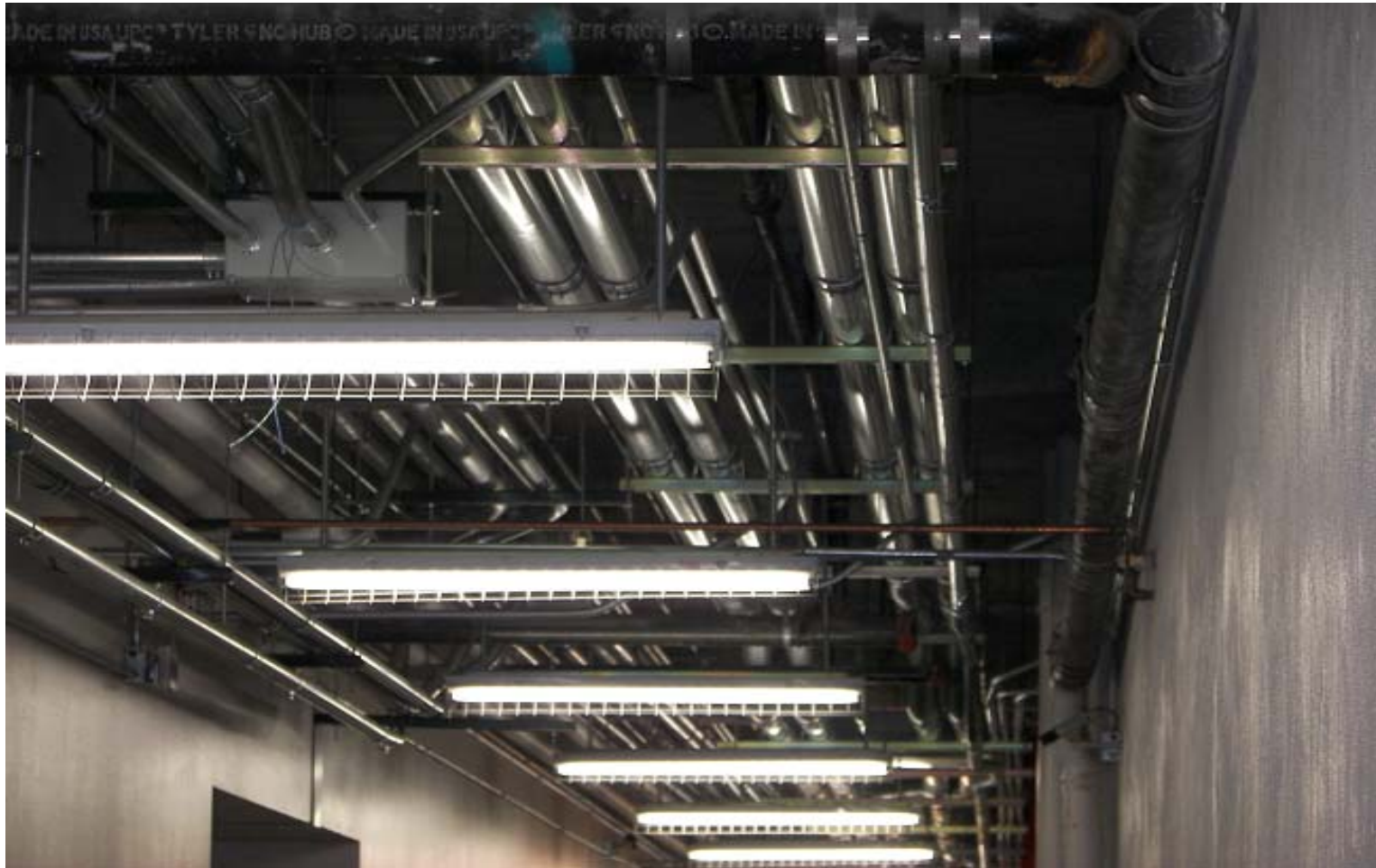
# **Cabling in Conduits**

## **(Las Vegas)**

**Terry Cobb**  
**SYSTIMAX SOLUTIONS**

# Most of the cable length was in a conduit (open ceiling)

---



# Most of the cable length was in a conduit (closed ceiling)

---



## Some conduits were large

---





## Some conduits had mixed cable types

---



# Conduits vary in size





# Conduits are routed directly from the closet

---



# Cable bundles grouped before the conduits

---



July 2007

IEEE 802.3at DTE Power



# Separate bundles into conduits



# Some conduits are embedded in concrete floors

---





# Some conduits were coated with material

---





# Area of high ambient temperature

---



July 2007

IEEE 802.3at DTE Power

# Cable inside a conduit feeding an outside access

---



# Cable connected to an outside camera

---





# Conclusion

---

- **Cables can be in conduits for almost the entire length of the channel.**
- **Conduits can be large and have a large number of cables.**
- **In this installation for the cabling inside the building the ambient temperature around the conduit is probably not high enough to become a limitation.**
  - **Other than concrete and the coating, the conduits did not appear to be encased in any insulating material.**
- **For the cabling outside the building the ambient temperature can be high but in this installation the number of cables in a conduit was limited.**