

# IEEE P802.3bm Task Force Working Group Ballot Overview

Dallas, TX, USA  
November 2013

Adam Healey  
Vice-Chair, IEEE 802.3 Working Group

# References

---

- This material in this presentation is derived from the following sources...
  - [Operating Rules of IEEE Project 802 Working Group 802.3, CSMA/CD LANs](#)
  - [IEEE Project 802 LAN / MAN Standards Committee \(LMSC\) Operations Manual](#)
  - [IEEE-SA Standards Board Operations Manual](#)
- ...as well as tutorials on this topic presented by Wael William Diab

# Working Group (WG) letter ballot

---

- From the Operating Rules of IEEE Project 802 Working Group 802.3, CSMA/CD LANs
  - 2.8 WG Balloting
    - “A draft must successfully pass a WG letter ballot (conditional approval excepted) before it can be forwarded to the Executive Committee for approval for Sponsor Group voting”

# Ballot requirements

---

- Draft must be complete with no open technical issues
- It must be formatted using the style selected by the WG chair
- It must be made available for pre-view by the WG
  - By the Monday prior to the plenary week
- It must be approved for submittal to WG letter ballot at the WG closing plenary
  - Changes to the pre-view draft shall be presented for review at the WG closing plenary immediately prior to the vote

# Ballot group

---

- “...consists of all voting members of the WG at the close of day the ballot package distribution was completed” [1]
- If you are a member of the WG when the initial ballot is announced, you are in the ballot group
  - If you become a member after the initial ballot is announced, you will not be part of the ballot group
- The ballot group does not change throughout the ballot, including recirculations
  - If you lose your membership after the initial ballot is announced, you are still part of the ballot group

[1] Operating Rules of IEEE Project 802 Working Group 802.3, CSMA/CD LANs, 2.8.1

# Ballot process

---

- Conducted electronically i.e. e-mail
  - It is important to maintain current contact information in the WG database
- Initial ballot is minimum 35 days in duration
- Recirculation ballots are minimum 15 days in duration

# Cast your ballot, part 1

---

- **APPROVE ALL WITHOUT COMMENT**
  - You approve the draft
  - You are voting to progress the draft to Sponsor Group voting
- **APPROVE WITH COMMENT on SOME**
  - You approve the draft
  - You are including comments that describe changes you would like to make to the draft
  - You are voting to progress the draft to Sponsor Group voting whether the changes you propose are made or not

# Cast your ballot, part 1

---

- DISAPPROVE
  - You do not approve the draft
  - You are voting to not progress the draft to Sponsor Group voting
  - You are including comments that describe changes you would like to make to the draft
  - You shall identify comments that describe what must be done to the draft to change your vote to APPROVE
- ABSTAIN, Lack of Expertise
- ABSTAIN, Lack of Time
- WARNING: Membership may be lost for not returning, or abstaining, in 2 of the last 3 WG letter ballots



# Submit your comments

---

- You are STRONGLY ENCOURAGED to use the [802.3 Draft Comment Tool](#)
  - This is the same tool that you have been using for Task Force review
- You may also submit comments as ASCII text
  - A form is provided with the ballot
  - This method involves manual transcription
  - It is recommended that you check your comments to ensure accurate transcription when the comment file is available

# Comment types

---

- **T** = **T**echnical, **E** = **E**ditorial
- **TR** = **T**echnical **R**equired, **ER** = **E**ditorial **R**equired
  - The “R” designation has no formal meaning in TF review
  - “R” is associated with a DISAPPROVE vote in WG ballot
  - It is your way to identify comments that describe what must be done to the draft to change your vote to APPROVE

# Responding to comments

---

- The TF shall consider all comments received during the ballot
  - Comments may be accepted, revised, or rejected
- If you cast a DISAPPROVE vote...
- Once the TF has agreed upon a response to a comment that you designated as **R**equired, you will be asked if you are “satisfied” with the response
  - If you are satisfied, the comment is considered closed
  - If you are not satisfied, the comment (and the agreed response) must be recirculated with the next draft

# There is a recirculation requirement

---

- The draft may be changed in response to comments or for other reasons
- All substantive changes must be recirculated to the WG
  - Allows ballot group members to change their vote in response to changes in the draft
- All unsatisfied **R**equired comments must be recirculated to the WG
  - Allows ballot group members to “pile on” (change their vote) if they disagree with the response

# Ballot scope

---

- The scope of the initial ballot is entire draft
- While the approval rate is less than 75%, the scope of recirculation ballots is the entire draft plus unsatisfied “required” comments
- When the approval rate is 75% or greater, the scope of the recirculation ballot narrows
  - Only changes to the draft and/or sections of draft impacted by those changes are within scope
  - Plus unsatisfied “required” comments
- Out-of-scope comments need not be addressed

# Successfully completing the ballot

---

- Participation rate  $\geq 50\%$
- Approval rate  $\geq 75\%$
- Abstention rate  $< 30\%$
- No need to conduct a recirculation ballot
  - Satisfy participation, approval, and abstention rate requirements
  - No substantive changes made to the draft
  - No need to rebut new, in-scope, **R**Required comments

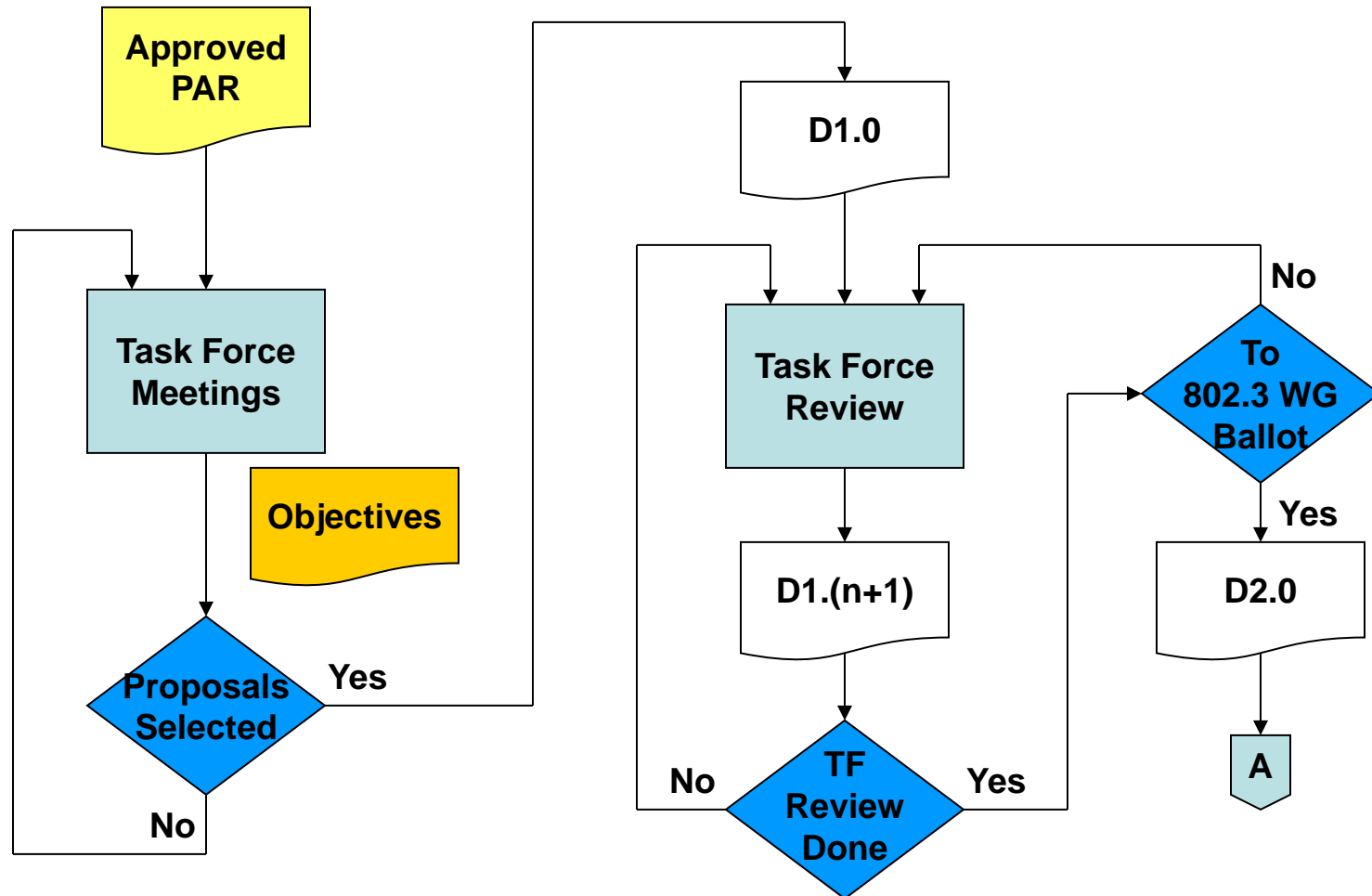
# What does this mean?

---

Once the requirements for participation, approval, and abstention rate are met, one way to guarantee completion of the ballot process is to

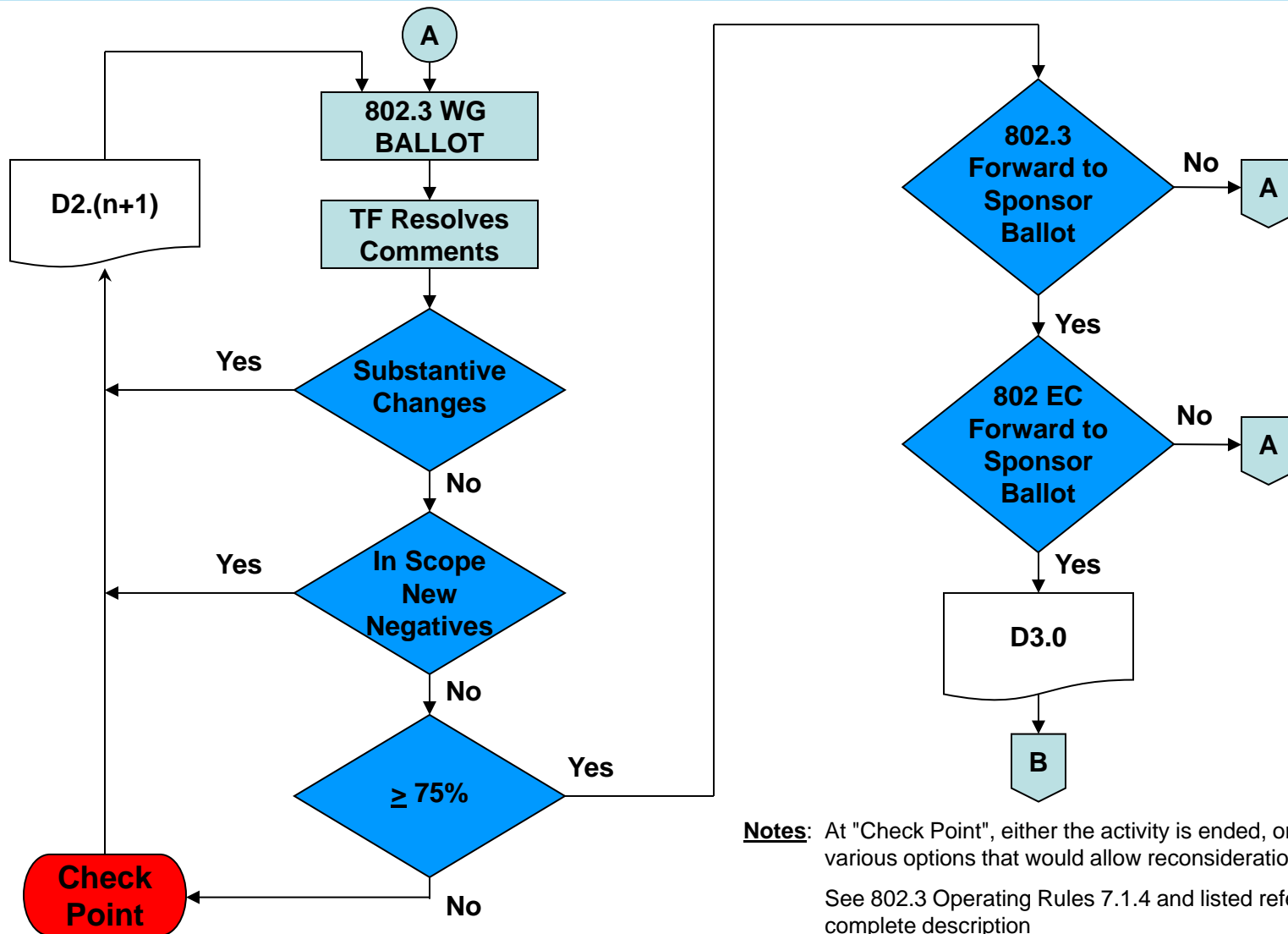
**STOP  
MAKING  
CHANGES**

# The famous flow chart, part 1





# The famous flow chart, part 2



**Notes:** At "Check Point", either the activity is ended, or there may be various options that would allow reconsideration of the approval.  
See 802.3 Operating Rules 7.1.4 and listed references for complete description

# FAQs

---

- A list of frequently asked questions concerning the IEEE 802.3 balloting and comment collection process may be found at this [link](#)