

Cabling Considerations for IEEE 802.3bq 25GBASE-T

Masood Shariff



Supporters

NAME	COMPANY
Ron Tellas	Panduit
Ron Nordin	Panduit
Bob Wagner	Panduit
Kamal Dalmia	Aquantia
Bernie Hammond	TE Connectivity
Sterling Vaden	Vaden Enterprises
Paul Kish	Belden
Stephane Bourgeois	Belden
Richard Mei	CommScope
George Zimmerman	CME Consulting
Amrik Bains	CISCO
William Lo	Marvell

NAME	COMPANY
Ron Cates	Marvell
Jon Lewis	Dell
Ramin Farjad	Aquantia

Outline

- 25GBASE-T Study Group objectives
- Single link segment advantages
- Market preferences
- Cabling Standards support
- Cabling Technology advances
- Recommendations

25GBASE-T objectives

- ...
- ...
- ❖ Support a data rate of 25 Gb/s at the MAC/PLS Service Interface
- Define a link segment based upon copper media specified by ISO/IEC JTC1/SC25/WG3 and TIA TR42.7 meeting the following characteristics:
 - 4-pair, balanced twisted-pair copper cabling
 - up to 2 connectors
 - up to at least 30 m
- Define a single 40 Gb/s PHY supporting operation on the link segment
- ❖ Define a single 25 Gb/s PHY supporting operation on the link segment

- ❖ Adopted by the 25GBASE-T Study Group, January 14, 2015

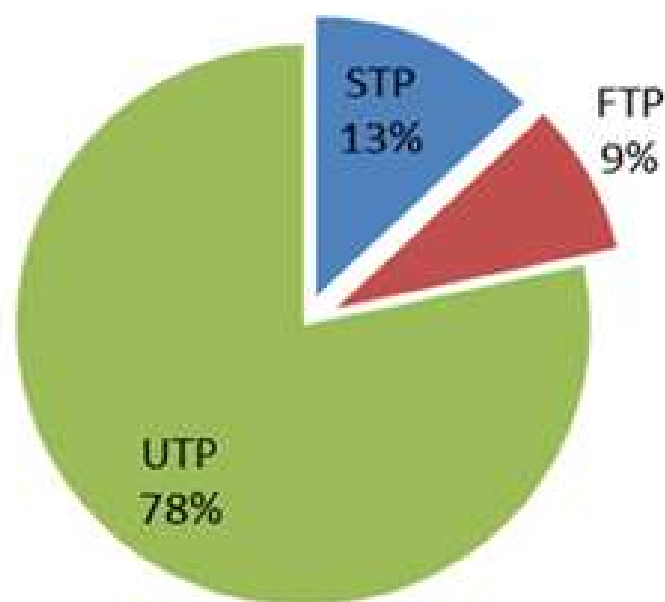
Source: http://www.ieee802.org/3/25GBASET/draft_P802.3bq_modified_objectives.pdf

Single link segment advantages

- 40GBASE-T defined a new topology of 30 m, two connection balanced cabling suitable for data center applications
- Link segment properties studied and vetted by both cabling and PHY vendors to select TIA Category 8 or ISO Class I&II
- Re-using the same link segment for 25GBASE-T facilitates an easy path to quick development
- A **single** link segment for 25, 40, and potentially 50 GBASE-T with a **single** backward compatible interface for auto-negotiation continues the popular “evolutionary growth” of BASE-T applications

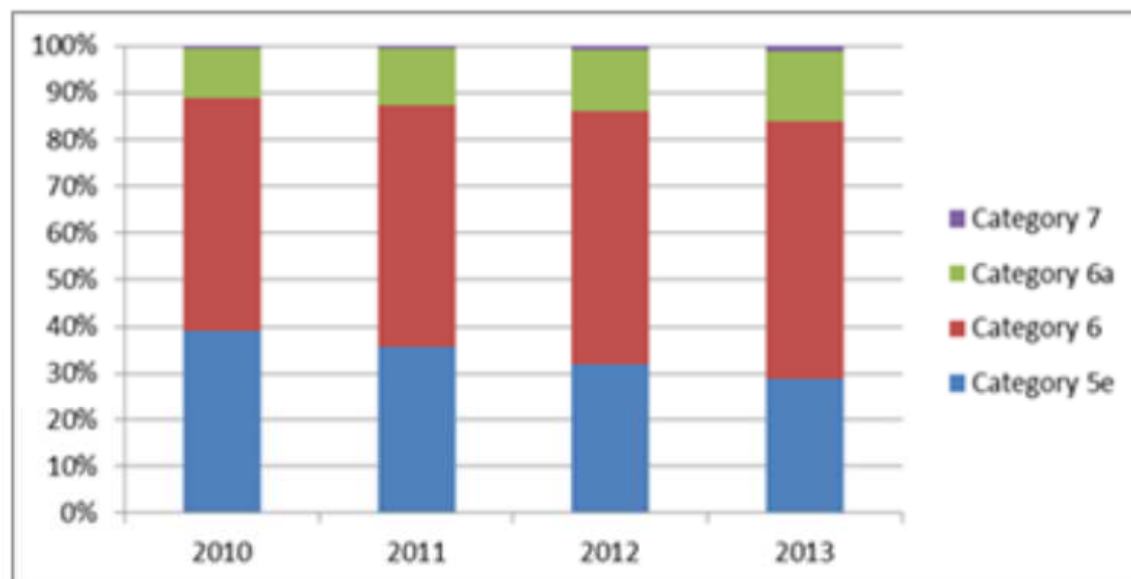
Worldwide Sales by type of cables, 2013

Worldwide Sales by type of cables, value, 2013



- Global sales are dominated by unshielded cables with a 78% share
- UTP accounts for 85% by volume
- Since 2008 shielded cable sales have been stable at 22%

Penetration by Category worldwide 2009 – 2013 and by region, 2013



- Worldwide (40 countries)
- Based on cabling end-to end systems
- Sales of Volume (outlets/ cables)

2013	Cat 5e	Cat 6	Cat 6a	Cat 7/7A	Total
America	35%	58%	7%	0%	100%
Asia Pacific	33%	59%	7%	1%	100%
Europe	17%	44%	37%	3%	100%
ME/South Africa	10%	65%	24%	1%	100%
Worldwide	29%	55%	15.0%	1.1%	100%

Cable Category Shipments

	2011	2012	2013	2014
Category 5e	36%	33%	31%	28%
Category 6	51%	54%	54%	55%
Category 6A	12%	13%	14%	16%
Category 7	0.7%	0.7%	0.8%	0.8%
TOTAL Worldwide	100%	100%	100%	100%

Source: BSRIA March 2015 Worldwide Market Overview – Structured Cabling

Market preferences

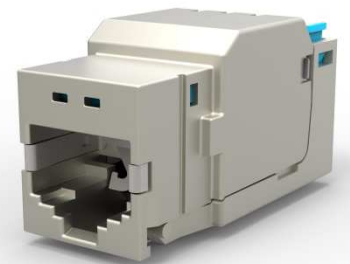
- Category 7A limited to a few countries and regions with a worldwide market size of less than 1 %
- Based on multiple sources and inference from the BSRIA data, 7A cables are mostly terminated on Category 6A RJ45 STP interface connectors making the channel Category 6A
- Installed base of complete Category 7A channels is therefore far below the 1 % worldwide cable shipments and does not represent a significant broad market potential
- Dominant cabling in the market is Category 6/6A cable shipping about 71% of worldwide market in 2014
- Category 8/Class I have compatible connectors with Category 6/6A connectors and are likely to be adopted easily and broadly

Cabling Standards Support

- TIA-568-C.2-1 Category 8 cabling specifications is now in ANSI industry ballot and will likely publish by end of 2015
- ISO 11801-1 Ed3 containing Class I and II specified up to 2000 MHz is in Committee Ballot and will likely publish in 2016
- Associated component and test specifications in IEC and TIA are under development up to 2000 MHz and will also likely publish in 2016
- Using simple frequency scaling 25GBASE-T is expected to need up to 1250 MHz of bandwidth
- There are no standards under development for a 1250 MHz cabling system specifying a 30 m channel with 2 connections.
- Category 7A is specified up to 1000 MHz and any claims of performance beyond 1000 MHz are non-standard instances
- No Category 7A 30 m two connection specifications under development corresponding to the IEEE 802.3 30 m link segment

Cabling Technology Advances

- Since the advent of IEEE 40GBASE-T, there has been significant interaction with cabling SDOs leading to the following advances in Category 8 and Class I/II cabling:
 - Alien Crosstalk has been improved dramatically
 - Balance parameters which reduce mode conversions are now required for Category 8 and Class I/II (not required for Category 7A)
 - RL specifications are significantly improved
 - Spikes in IL and RL responses reduced resulting in smooth and stable link segment performance



Recommendations

- Keep the link segment for 25GBASE-T the same as the consensus link segment agreed for 40GBASE-T allowing:
 - Quick integration of 25GBASE-T into the 40GBASE-T working draft
 - Common link segment between 25, 40 and potentially 50 GBASE-T applications with a single backward compatible RJ45 interface
 - Easy and broad acceptance in the market that has shown clear preference for Category 6/6A type of cabling, which is the basis for Category 8/Class I