

802.3bq Editors Report

George Zimmerman
CME Consulting
Chief Editor

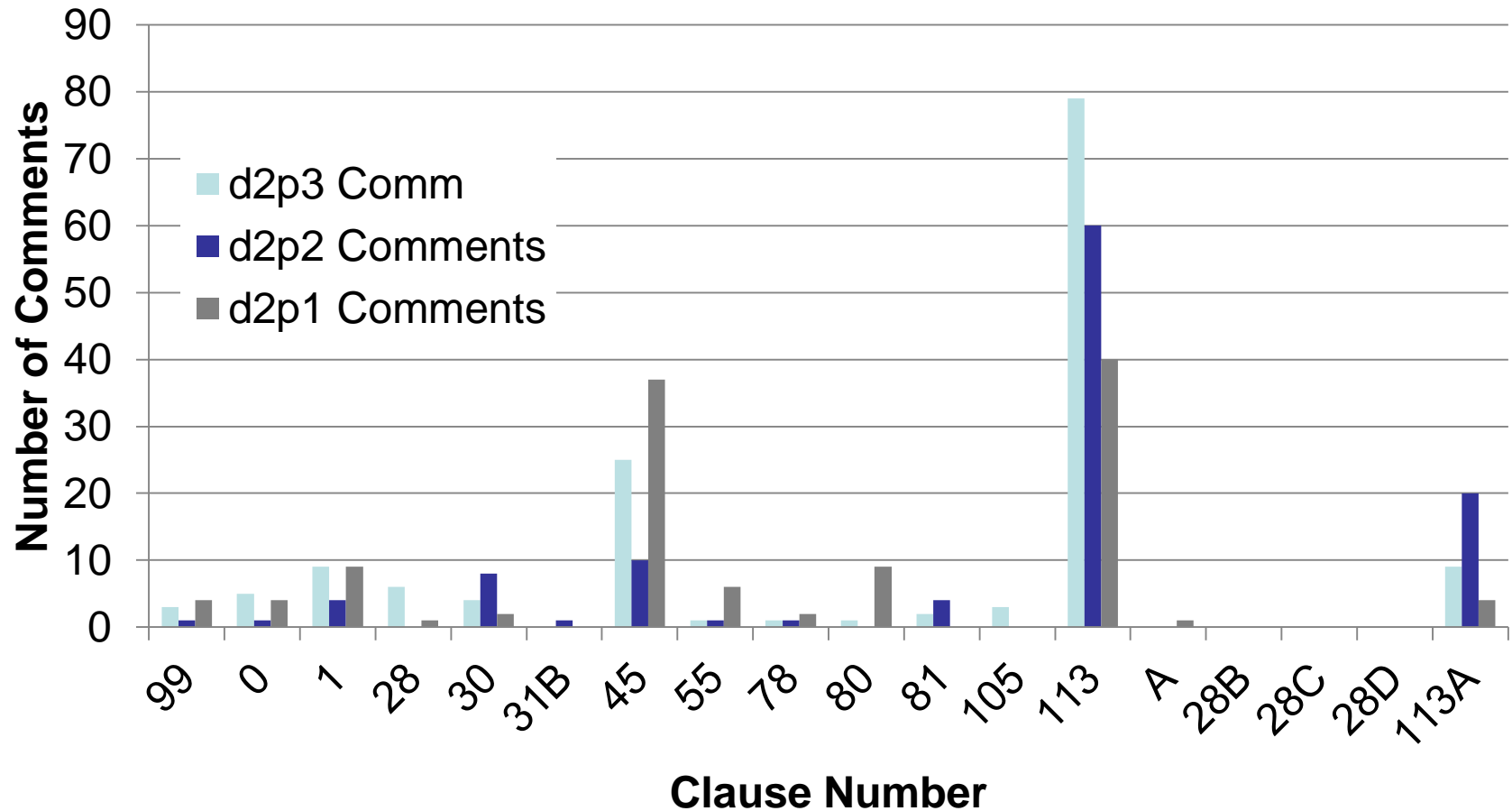
Status

- Draft 2.3 Working Group Ballot recirculation
 - Opened 2nd October 2015, closed 31 October 2015

| | D2p3 | D2p3% | D2p2 | D2p2% | D2p1 % | D2p0% | Req'd |
|-------------------------------|------------|--------------|------------|--------------|--------------|--------------|----------------|
| Voters | 274 | | 274 | | | | |
| Return | 170 | 62.0% | 164 | 59.9% | 56.6% | 55.1% | >50% |
| Approve | 133 | 95.0% | 117 | 88.6% | 83.2% | 82.3% | >75% |
| Disapprove w/comment | 7 | 5.0% | 15 | 11.4% | 16.8% | 17.7% | <25% |
| Disapprove w/o comment | 0 | 0.0% | 0 | 0.0% | 0.0% | 0.9% | |
| Abstain | 30 | 17.6% | 32 | 19.5% | 23.2% | 24.5% | <30% |
| Comments | 148 | | 96 | | | | |

2 new negative votes, associated w/TR comments

Distribution of Comments



Distribution: 101 E, 1 ER, 37 T, 9 TR

Recapping Previous Unresolved Negatives

- We were down to 4 unresolved negatives
- 2 technical disagreements over alternatives, Task Force considered & made no change:
 - Alternative transcoder (1 comment)
 - ARJ45 MDI (2 comments)
- 1 on 25Gb/s objective (should be OK now)
- 1 on cabling topology description disagreement
 - “star topology” vs “point-to-point”
- 1 on using an unavailable normative reference
 - Normative reference (ISO/IEC 11801-1) is not available to the ballot pool, hence can't be reviewed

Editorial Team

- George Zimmerman, Chief Editor
- Chris Diminico, Editor
- Valerie Maguire, Editor
- Jim Graba, Editor
- Curtis Donahue, Editor

Editorial Responsibilities

| Clause | Amendments | Owner |
|--------------|--|-------------|
| 1 | New normative refs, defns, abbreviations | Val |
| 28 | Auto-Negotiation support for new PHY | Val |
| | Annex 28b, 28C, 28D | Val |
| 30 | Add new management objects/attributes | Val |
| 45 | Add new registers/bits | Val, George |
| 78 | Add new Energy Efficient PHYs | Jim |
| 80 | 40 Gb/s overview | Val, George |
| 81 | XLGMII | Val, George |
| 82 | EEE signaling and state machines | George |
| 105 | 25 Gb/s Ethernet Overview | George |
| 113 | 40GBASE-T 113.1-.6, 9, Annex 113A | George |
| 113.7 | 113.7 channel | Chris |
| 113.8 | 113.8 MDI | Chris |

Summary by Topic

- 79 “EZ” Comments
- 69 Remaining Comments
 - 3 Architecture related
 - 4 BZ Order, related to ordering of the BZ and BQ drafts ** NEW **
 - 15 Cabling related
 - 9 Clamp-test (Annex 113A) - related
 - 14 Editorial
 - 1 General (offering to hold over comments to sponsor ballot if desired)
 - 4 PCS-related
 - 3 PICS- related
 - 2 PMA electrical-related
 - 4 Reference Model – ** NEW ** (thanks David Law for reviewing this)
 - 10 State Diagram – ** NEW ** (thanks again to David Law)

Comment Resolution Agenda

- Approve EZ Bucket
- Resolve in groups by Topic
 - General
 - Ref Model
 - State Diagram
 - Architecture
 - BZ Order
 - Editorial
 - PCS
 - PICS
 - PMA Electrical
 - Cabling
 - Clamp

NOTE: Cabling & Clamp Topics were moved to the end to aid in developing consensus

EZ Bucket

- As stated on the reflector:
 - Comments marked with the EZ topic are expected to be approved in a single motion
 - Please review http://www.ieee802.org/3/bq/comments/EZ_8023bq_D2p3_Page_proposed.pdf
 - At this time, if you wish to remove a comment from the EZ Topics, please speak up
 - From reflector, no comments are removed

Comments Excluded from EZ Bucket

- **Motion #3:** Approve the proposed resolution of all EZ comments, marked with the EZ Topic in http://www.ieee802.org/3/bq/comments/EZ_8023bq_D2p3_Page_proposed.pdf excepting none.
- **M: George Zimmerman S: Jon Lewis**
- **MOTION PASSES/FAILS (Technical \geq 75%)**
- **PASSES ENTHUSIASTICALLY BY VOICE VOTE WITHOUT OBJECTION (PEBVVO)**

BQ Comments To Do:

- Reopen Comment 75 (PROPOSE ACCEPT)
- Add new comment to BQ: G. Zimmerman, 113.1.3, P85 L28, E

| <i>Comment Type</i> | <i>T</i> | <i>Comment Status</i> | <i>D</i> | <i>Ref Model</i> |
|---------------------|----------|-----------------------|----------|------------------|
|---------------------|----------|-----------------------|----------|------------------|

The parameter 'scr_status' appears to only be used by the PMA Receive function (see subclause 126.4.2.4) and not by the PHY or Link control functions. In contrast the parameter 'pcs_status' appears to be used by the PHY and Link control functions (see Figure 126-26 and 126-27) and not by the PMA Receive function. Based on this, combining these two parameters on to a single line that connects to the PMA Receive, Link control, and PHY control functions doesn't seem to be the cleanest approach.

Suggested Remedy

Suggest that:

[1] In Figure 126-3 separate lines be drawn from the PCS RECEIVE block (1) for 'scr_status' connecting to the PMA RECEIVE block, and (2) for 'pcs_status' connecting to both the LINK MONITOR and PHY CONTROL blocks.

[2] In Figure 126-5 separate lines be drawn from the PCS RECEIVE block for 'scr_status' and 'pcs_status' to the PMA service interface.

[3] In Figure 129-19 separate lines be drawn from the PMA service interface (1) for 'scr_status' connecting to the PMA RECEIVE block, and (2) for 'pcs_status' connecting to both the LINK MONITOR and PHY CONTROL blocks.

Unsatisfied Comments Review

- Brad Booth (d2.0 #228)
 - Objects normative reference which is still in draft
- Geoff Thompson (d2.0 #480) – **SATISFIED!!!**
 - Objects to 'star topology' to describe the cabling configuration
- Valerie Maguire (3) (d2.3– #34,36,37)
 - Requests Category 7a link segment reference for 25GBASE-T, including 1 on reference to ISO TR on Category 7a for 25GBASE-T
- Hans Lackner (d2.0 #466)
 - Request an alternative MDI
- Zhongfeng Wang (d2.0 #403)
 - Requests different 512B/513B transcoder

Can we resolve any of these?

- Cat7a topic? – we tried yesterday, any new movement?
- 113.7.1, P131 L30:
 - “25G/40GBASE-T uses balanced cabling listed in Table 113–21— in a star topology to connect PHY entities.”
 - Comment: It says in this line that 40GBASE-T uses "star topology". That is untrue. It uses point-to-point topology as do ALL 802.3 devices which utilize "Link Segments".
 - Suggested Remedy: Replace “star” with “point-to-point”
- (ACCEPTED & COMMENTER SATISFIED BY MOTION):
 - delete “- in a star topology” on p181 L30 of draft 2.3 to satisfy comment # 480 from draft 2.0
 - M: Valerie Maguire S: Masood Shariff Technical ($\geq 75\%$)
 - APPROVED BY VOICE VOTE WITHOUT OBJECTION

THANK YOU!!!