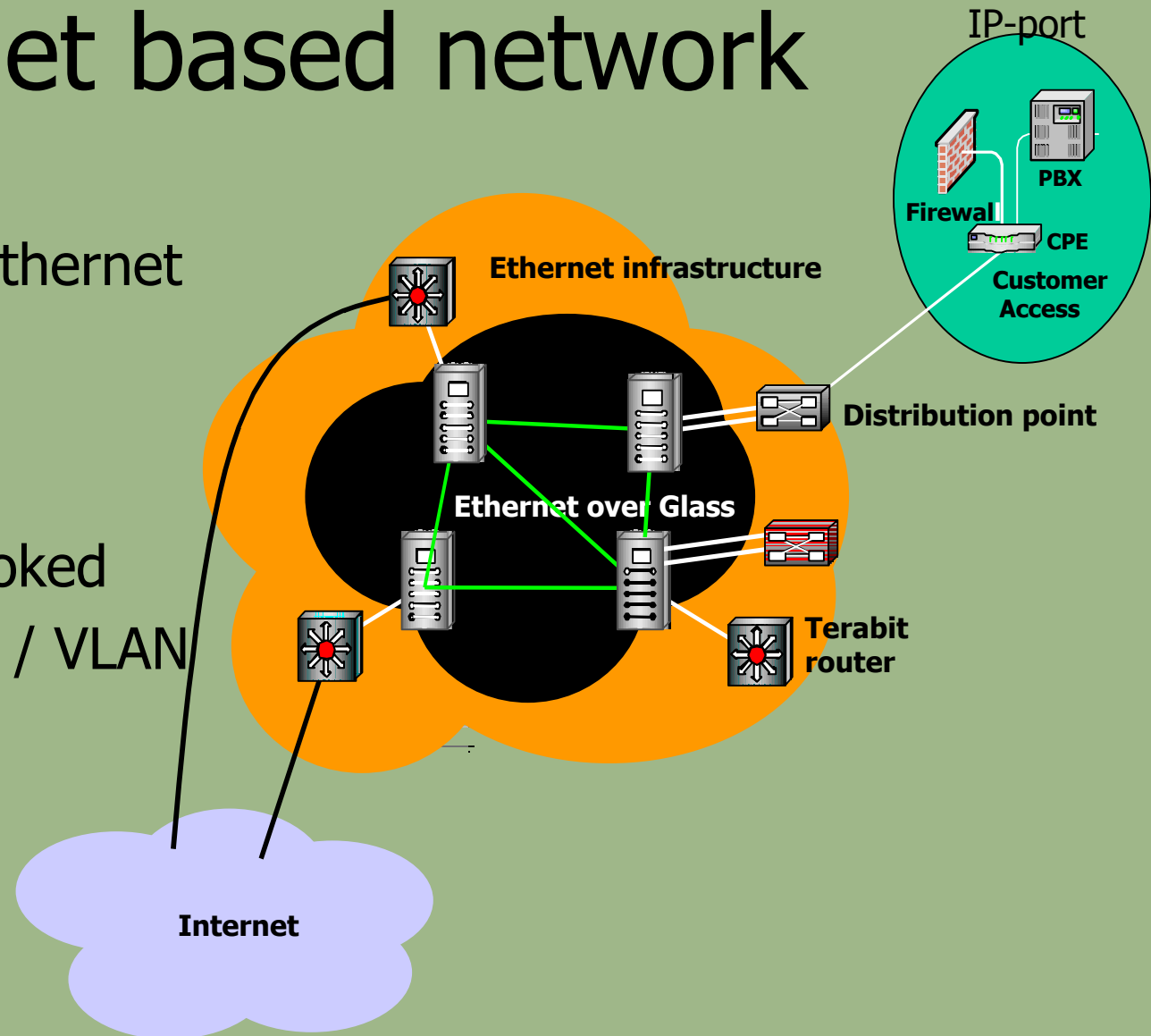


# Requirements for Copper based Ethernet Access

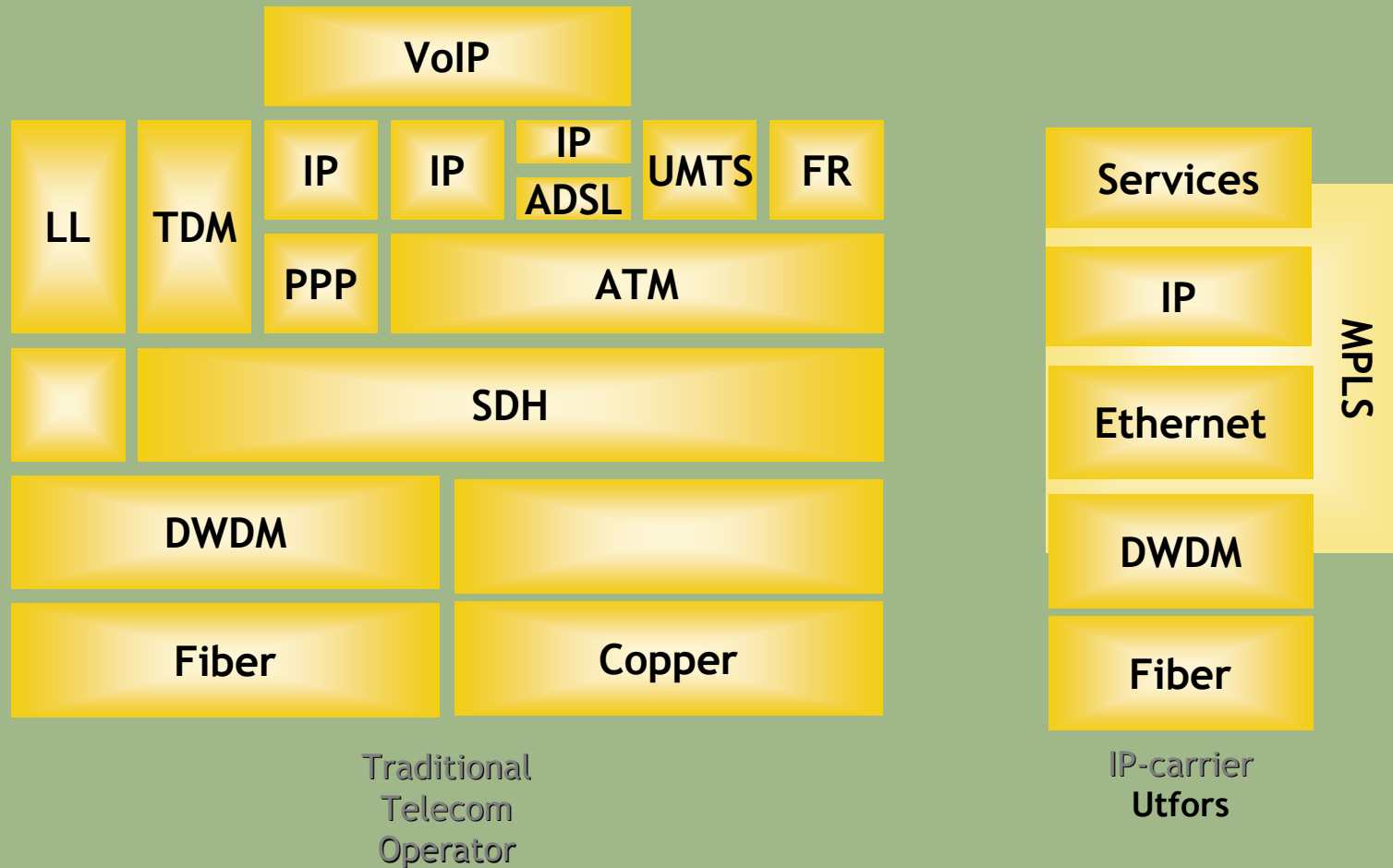
**Klas Eriksson, Utfors**

# Ethernet based network

- End to end Ethernet transport
- No packet conversion
- Non-over booked
- VPN services / VLAN



# A Ethernet transport platform



## **Utfors needs a transparent Ethernet service (Transparent LAN Service, TLS)**

It should be based on:

- Seamless Ethernet transport over All media (Copper, Fiber, and Air)
  - FTTH, CuTTH, etc
- Full Duplex support / Symmetric Service
- Distance minimum 3 – 4 km on all medias (to reach 98% of customer)
- Same transport speed as Ethernet, 10 MB, 100 MB, 1 GB, etc.
- Standard based solution, interconnects with all other Ethernet devices
- Co-existence with xDSL technologies
- Single standard