

-----+  
| 8802-3/802.3 REVISION REQUEST 1117 |  
+-----+

DATE: 31st Oct, 2003  
NAME: Dave Dwelley  
COMPANY/AFFILIATION: Linear Technology  
E-MAIL: ddwelley@linear.com

REQUESTED REVISION:  
STANDARD: IEEE Std. 802.3af-2003  
CLAUSE NUMBER: 33.2.3.7  
CLAUSE TITLE: State Diagrams

PROPOSED REVISION TEXT:

Add new variable OPTION\_DETECT\_TED to 33.2.3.4  
  
Change state machine per attached markup.  
  
Change note 21 in table 33-5: change "detection" to "powering"  
  
For details see attached draft.

RATIONALE FOR REVISION:

The current state machine prevents detection during a TED\_TIMER interval, which is a valid mode of operation (per my comment 28 against 802.3af-D4.1). This change allows this alternate mode of operation without breaking current hardware.

IMPACT ON EXISTING NETWORKS:

None if the new variable is optional.

-----+  
| Please attach supporting material, if any |  
| Submit to:- Bob Grow, Chair IEEE 802.3 |  
| E-Mail: Bob.Grow@intel.com |  
| |  
| +----- For official 802.3 use -----+ |  
| REV REQ NUMBER: 1117 |  
| DATE RECEIVED: 31st Oct, 2003 |  
| ~~EDITORIAL/TECHNICAL~~ |  
| ACCEPTED/~~DENIED~~ |  
| BALLOT REQ'D YES/~~NO~~ |  
| COMMENTS: 08-Mar-06 Ver: D2.0 Status: P |  
+-----+

| For information about this Revision Request see - |  
| [http://www.ieee802.org/3/maint/requests/revision\\_history.html#REQ1117](http://www.ieee802.org/3/maint/requests/revision_history.html#REQ1117) |  
+-----+

33.2.3.7 State diagrams (replace figure 33-6 with the following - changes highlighted)

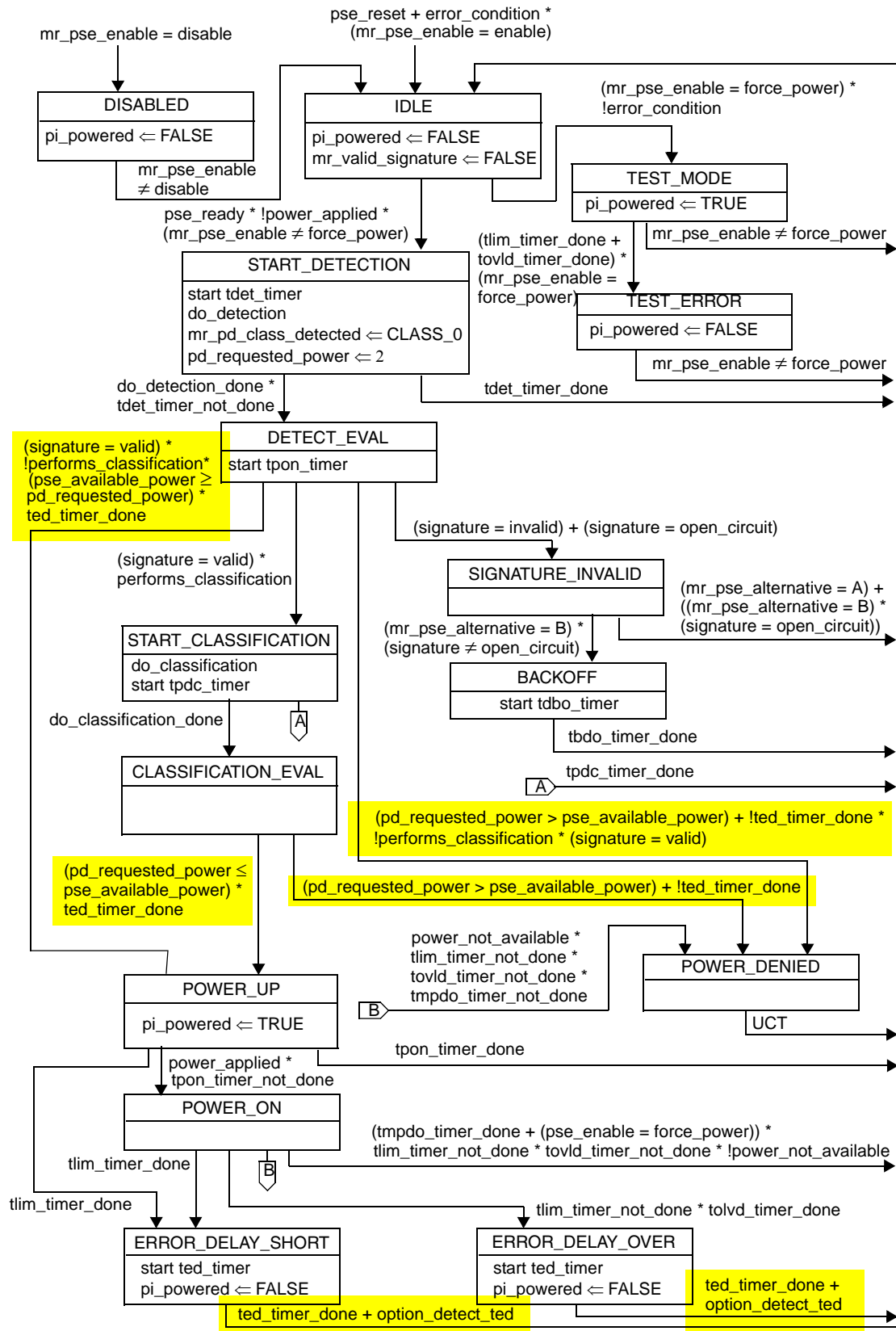


Figure 33-6—PSE state diagram

### 33.2.3.8 Variables

*Insert the following new variable alphabetically into subclause 33.2.3.8:*

option\_detect\_ted

This variable indicates if detection can be performed by the PSE during the ted\_timer interval.

Values: FALSE: Do not perform detection during ted\_timer interval.

TRUE: Perform detection during ted\_timer interval.

### 33.2.4 Power supply output

*Change entry 21 of Table 33-5 as follows:*

21	Error delay timing	$T_{ed}$	ms	750		Delay before PSE may attempt subsequent <del>powering detection</del> after power removal because of error condition.
----	--------------------	----------	----	-----	--	---

1  
2  
3  
4  
5  
6  
7  
8  
9  
10  
11  
12  
13  
14  
15  
16  
17  
18  
19  
20  
21  
22  
23  
24  
25  
26  
27  
28  
29  
30  
31  
32  
33  
34  
35  
36  
37  
38  
39  
40  
41  
42  
43  
44  
45  
46  
47  
48  
49  
50  
51  
52  
53  
54