

+-----+  
| 8802-3/802.3 REVISION REQUEST 1165 |  
+-----+

DATE: 30th March, 2005  
NAME: Yair Darshan  
COMPANY/AFFILIATION: PowerDsine  
E-MAIL: yaird@powerdsine.com

REQUESTED REVISION:  
STANDARD: IEEE Std. 802.3af-2003  
CLAUSE NUMBER: 33C.1.4  
CLAUSE TITLE: Capacitive load for inrush current test

PROPOSED REVISION TEXT:

Paragraph 33C.1.4, the text after figure 33C.3.

Change from "3. The capacitive load value is chosen to emulate a short-circuit condition for more than 75ms"

To "3. The capacitive load value  $C_{test}$  is chosen to emulate inrush current during a startup mode condition.  $C_{test}$  is chosen larger than that allowable for  $C_{pd}$  to ensure the PSE stays in Inrush current limit for  $>75mS$  or until  $T_{lim}$  is reached. Smaller  $C_{test}$  capacitor values can be used as long as  $C_{test} > I_{inrush} * T_{lim} / V_{port}$ .

Figure 33C.3:  
Change  $C_{pd}$  to  $C_{test}$ .

RATIONALE FOR REVISION:

33C.1.4 is meant to illustrate how to measure the parameters Inrush and its time duration (See item (a) in the beginning of paragraph 33C.1.4.) and is required to successfully support the startup mode where the PSE is driving a capacitive load,  $C_{pd}$ .

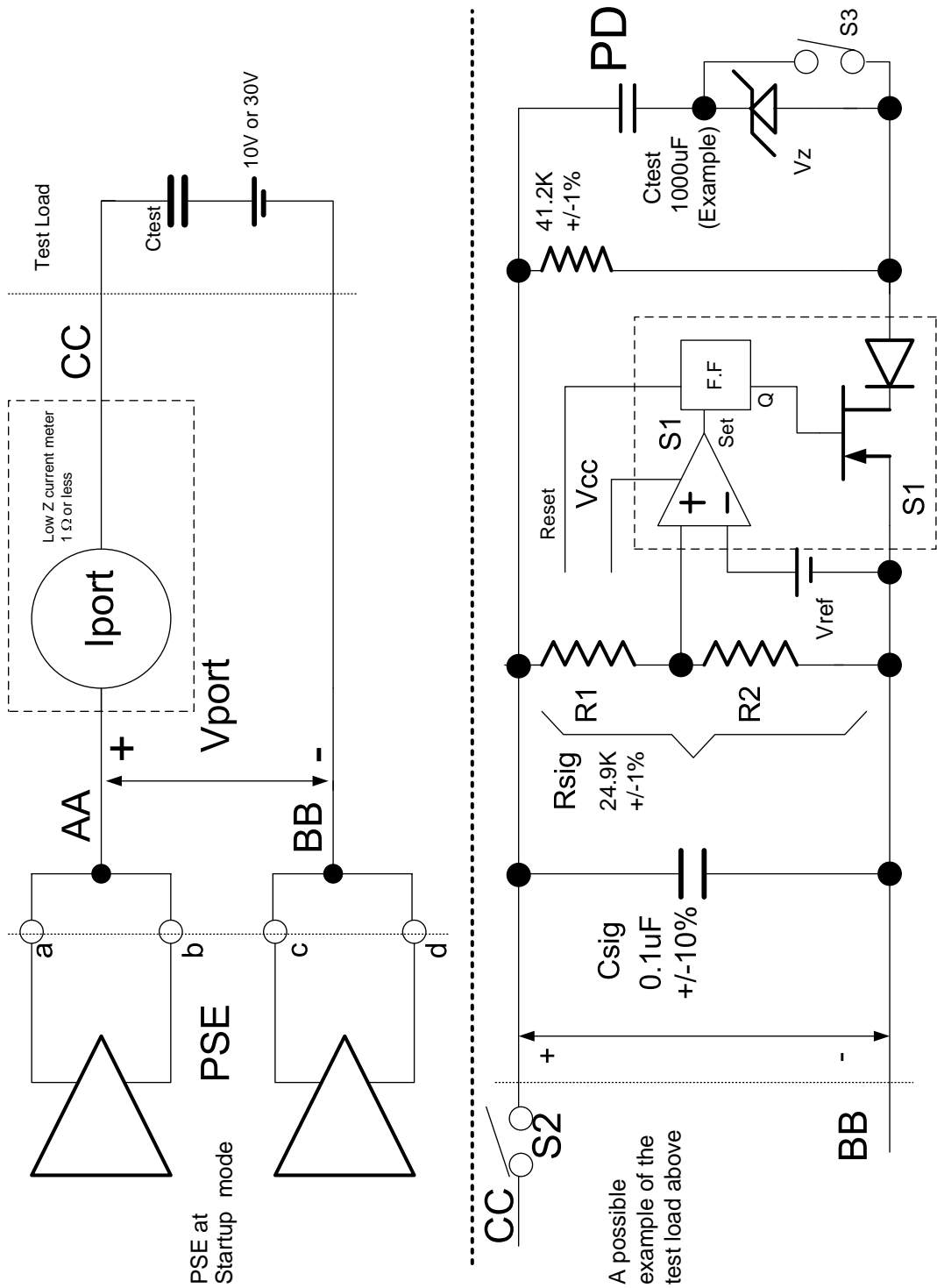
The figure showing  $C_{test}=1000uF$  (which was  $C_{pd}=1000uF$ ) in the example causes confusion with the specified maximum  $C_{pd}$  which is 180uF per 33.3.5.3.

IMPACT ON EXISTING NETWORKS:

No impact on current hardware. It is all informative, at the informative section.

```
+-----+
| Please attach supporting material, if any
| Submit to:- Bob Grow, Chair IEEE 802.3
|           E-Mail: Bob.Grow@intel.com
|
|           +----- For official 802.3 use -----+
|           | REV REQ NUMBER: 1165
|           | DATE RECEIVED: 30th March, 2005
|           | EDITORIAL/TECHNICAL
|           | ACCEPTED/DENIED
|           | BALLOT REQ'D YES/NO
|           | COMMENTS: 16-Nov-05 Ver: D1.2 Status: B
|
+-----+
| For information about this Revision Request see -
| http://www.ieee802.org/3/maint/requests/revision\_history.html#REQ1165
+-----+
```

1  
2  
3  
4  
5  
6  
7  
8  
9  
10  
11  
12  
13  
14  
15  
16  
17  
18  
19  
20  
21  
22  
23  
24  
25  
26  
27  
28  
29  
30  
31  
32  
33  
34  
35  
36  
37  
38  
39  
40  
41  
42  
43  
44  
45  
46  
47  
48  
49  
50  
51  
52  
53  
54



1  
2  
3  
4  
5  
6  
7  
8  
9  
10  
11  
12  
13  
14  
15  
16  
17  
18  
19  
20  
21  
22  
23  
24  
25  
26  
27  
28  
29  
30  
31  
32  
33  
34  
35  
36  
37  
38  
39  
40  
41  
42  
43  
44  
45  
46  
47  
48  
49  
50  
51  
52  
53  
54