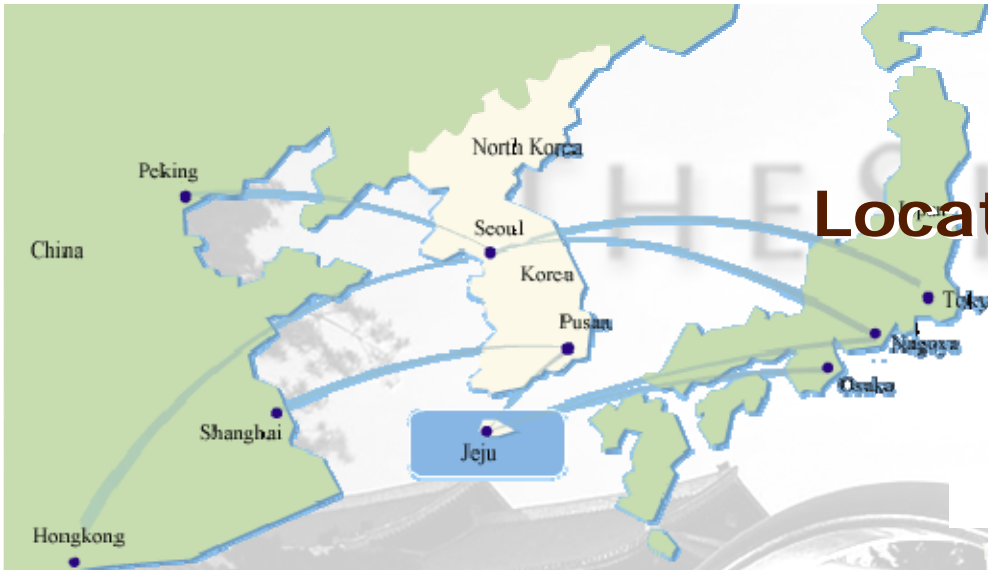


# IEEE802.1 and 802.3 joint meeting proposal

## September 17<sup>th</sup> ~20<sup>th</sup>, 2007

- **Period**
  - September 17<sup>th</sup> ~ 20<sup>th</sup>, 2007
  - Not available: Week of 24<sup>th</sup> (Korean Thanks Giving Holidays)
- **Locations**
  - Hotel Shilla, Seoul
- **Cost**
  - Room rate: US\$200 (Breakfast included)
  - Registration Fee: US\$400 (4 Lunches and one social included)
- **Sponsor**
  - Samsung Electronics, ETRI, and TTA
- **Contact: Geoffrey M. Garner (IEEE802.1AS editor)**  
**Hyunsurk(Eric) Ryu ([eric\\_ryu@samsung.com](mailto:eric_ryu@samsung.com))**

# Location



## At the center of Seoul



## Distance and time to Major Urban Area

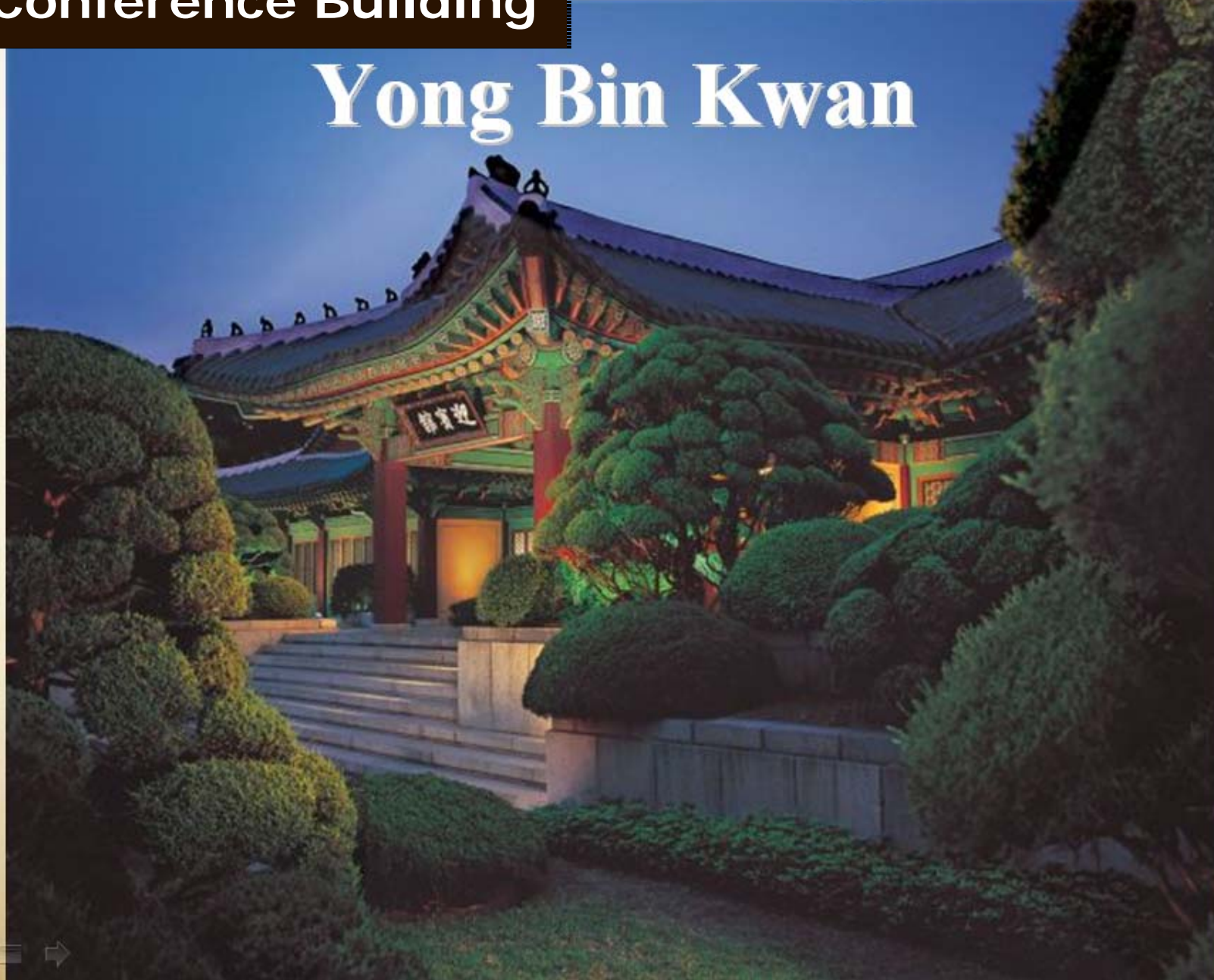
Major Areas	Distance	Time (minutes)	Traffic Means
Incheon International Airport	68 km	Approx. 60	Car
Gimpo Airport	30 km	Approx. 40	Car
Trade Center (Samseong-dong)	15 km	Approx. 30	Car
Financial Street in Yeouido	15 km	Approx 30	Car
Downtown	7 km	Approx 10	Subway
Shopping Streets in Itaewon	4 km	Approx 10	Car
Shopping Streets in Apgujeong	6 km	Approx 10	Subway
Seoul Railway Station	7 km	Approx 10	Subway



Conference Building

THE SHILLA

# Yong Bin Kwan



# Conference rooms for main meetings

THE SHILLA



THE SHILLA

## Conference rooms for small group

Executive Conference Center

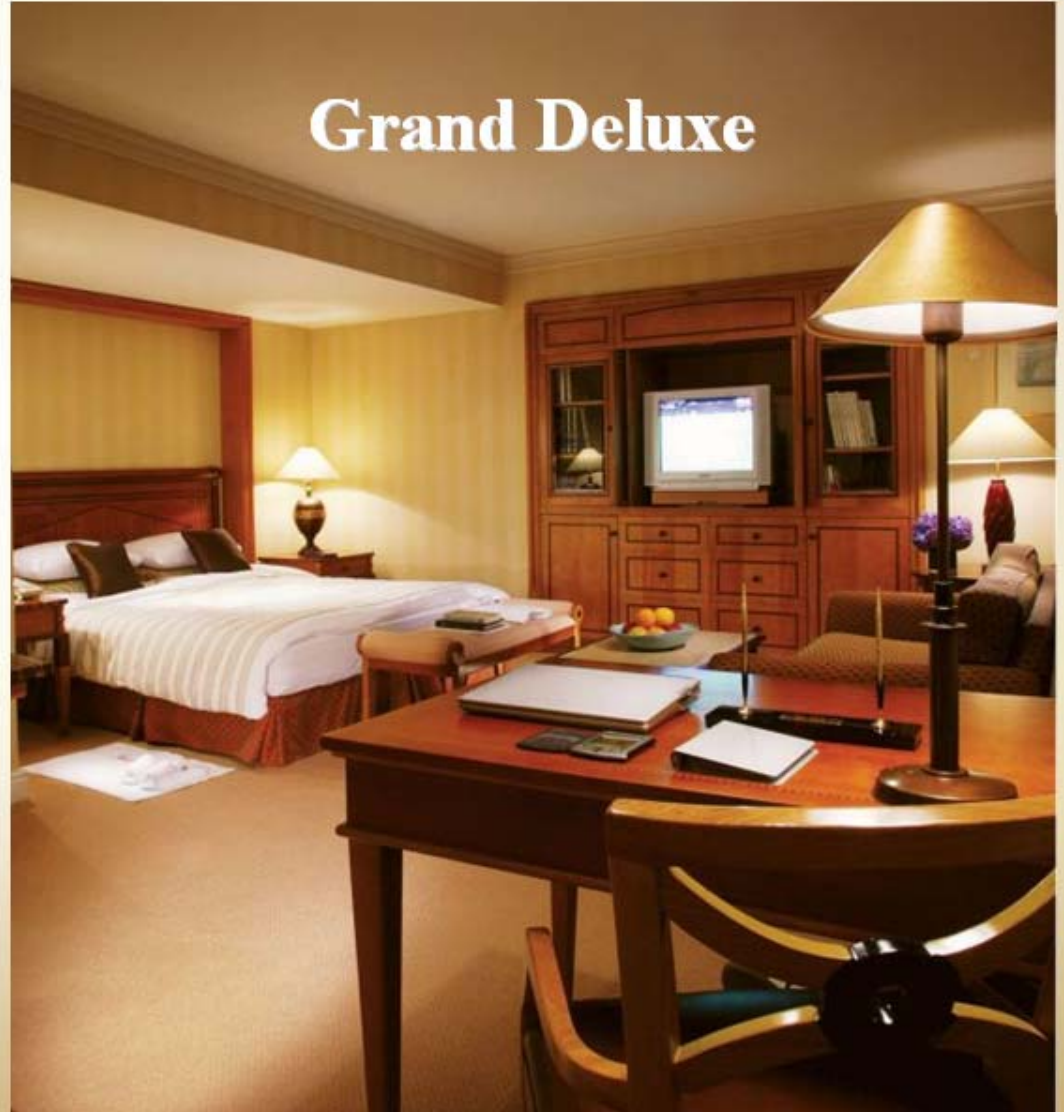


# Guest Rooms

Deluxe



Grand Deluxe



# Restaurants

