

Offer to Host

DELLEMC

IEEE 802.3 Interim Session

September 21-25, 2020

Kansas City, MO, USA



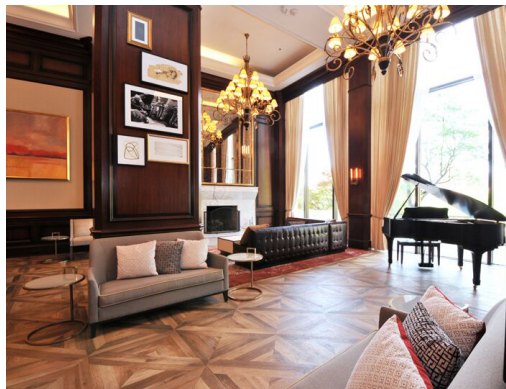
Country Club Plaza – Kansas City neighborhood

- Developed in 1922; first US shopping center outside a city center; impeccably maintained
 - 5 miles south of downtown Kansas City
 - <https://www.countryclubplaza.com/>
- 15 block outdoor shopping, dining and entertainment district; over 30 restaurants
- Delightful walkable area with Mediterranean-influenced architecture, fountains and art
- Many additional restaurants just outside the Plaza and in nearby neighborhoods (Westport and Brookside)
- Pleasant fall weather; late September average high/low 80°F (27°C)/60°F (16°C)



InterContinental Kansas City at the Plaza

- Constructed in 1972, renovated in 2017
- Awarded AAA Four Diamond rating for 29 consecutive years
- Modern all-day restaurant and bar; grab 'n go coffee counter
- Traditional lounge adjoining bar; live music six nights per week
- Fitness center
- Seasonal outdoor pool
- Concierge lounge



InterContinental Guest Rooms

- Comfortably appointed rooms
- King or Double/Double
- Sliding door and small balcony
- Full sized desk and desk chair
- Marble bathroom
- Laptop safe
- Keurig coffee maker
- Robe and slippers



Group Room Rate and Interim Meeting Fee

- InterContinental group rate:
 - \$189, plus taxes (17.6% + \$1.76/night)
 - Traditional King or Double/Double
- Group rate offered 3 days before and after Interim (based on availability)
- Group rates for upgraded rooms (based on availability):
 - Deluxe King or Queen/Queen \$209
 - Junior Suite \$225
 - One Bedroom Suites \$269-\$299
- \$18 self parking; \$25 valet parking



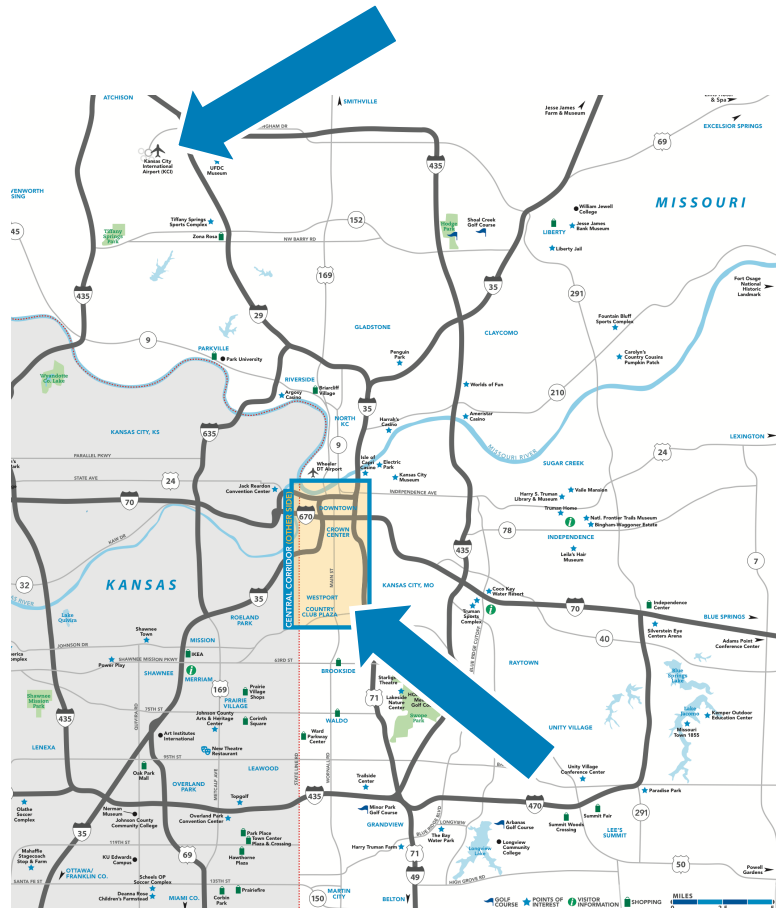
- \$450 early registration fee for InterContinental group rate guests:
 - Higher fees for late registration or anyone who does not stay in the group room block (similar to Dell EMC September 2018 fee structure)
- Lynn Kennedy, meeting planner for Dell EMC, will assist attendees with registration, reservations, visa letters, etc.

Getting There

- Fly to Kansas City International Airport (MCI)
 - Served by all major US carriers; see <https://www.flykci.com/>
 - Nonstop flights to over 40 US and Canadian airports
 - 24 miles north of hotel (30-40 minute drive)



- Amtrak service to Union Station
 - Three miles north of hotel (10 minute drive)



Summary: Offer to Host

- Dell EMC looks forward to hosting again to support the important work of IEEE 802.3
- Compelling destination with high quality hotel accommodations and meeting space
 - Upscale walkable area
 - Dining, parks, museums
 - Short drive to other vibrant Kansas City neighborhoods
 - Comfortable late September temperatures
- Experienced host and meeting planner
- Any questions?



**We hope you will accept Dell EMC's
offer to host the September 2020 Interim
in Kansas City, MO, USA**

Thank you!

