

Review of Clause 36 (PCS) : Link Monitor & Synchronization

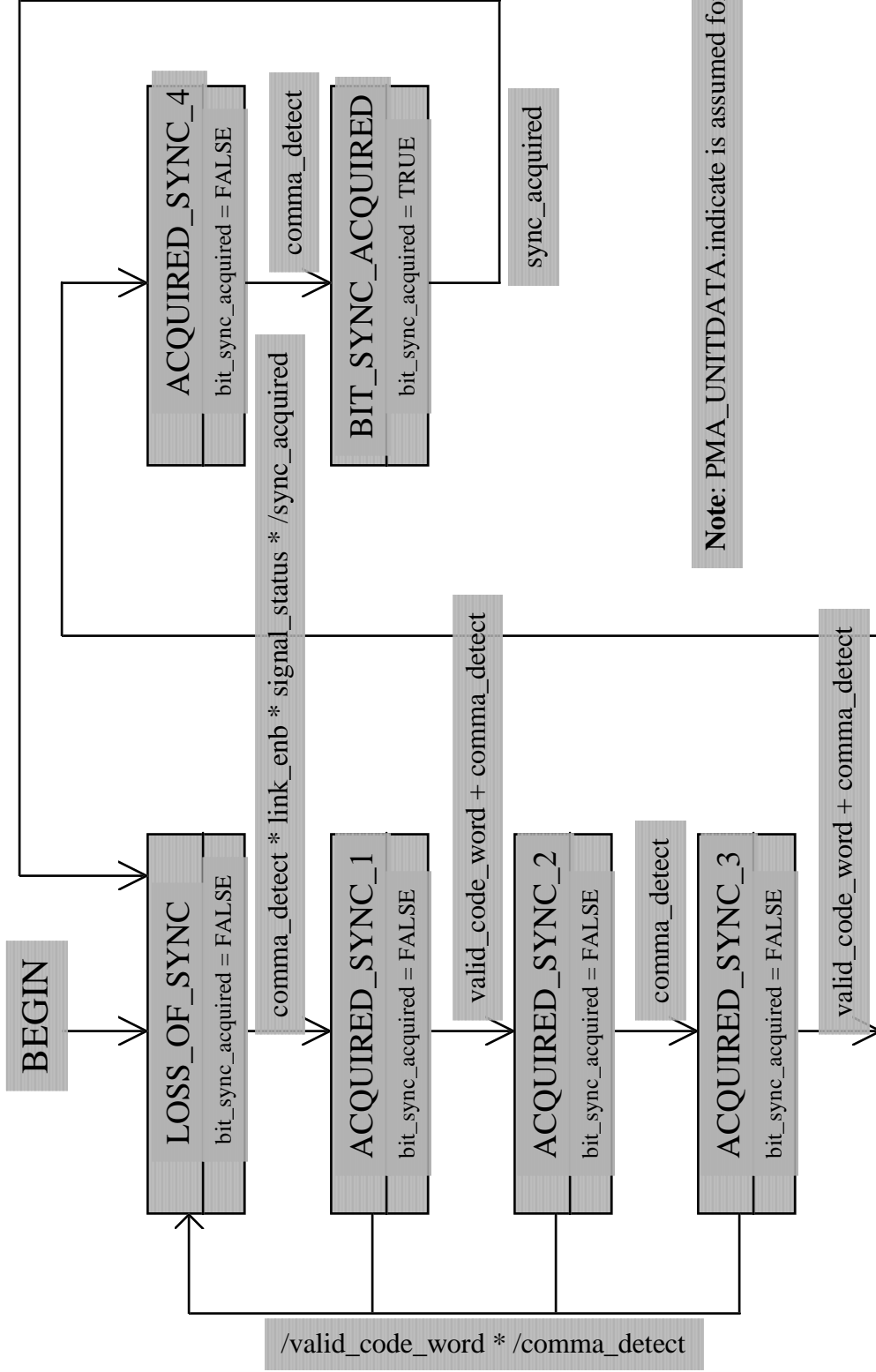
Devendra Tripathi

XaQti Corporation

IEEE 802.3z interim meeting January 27th 1997

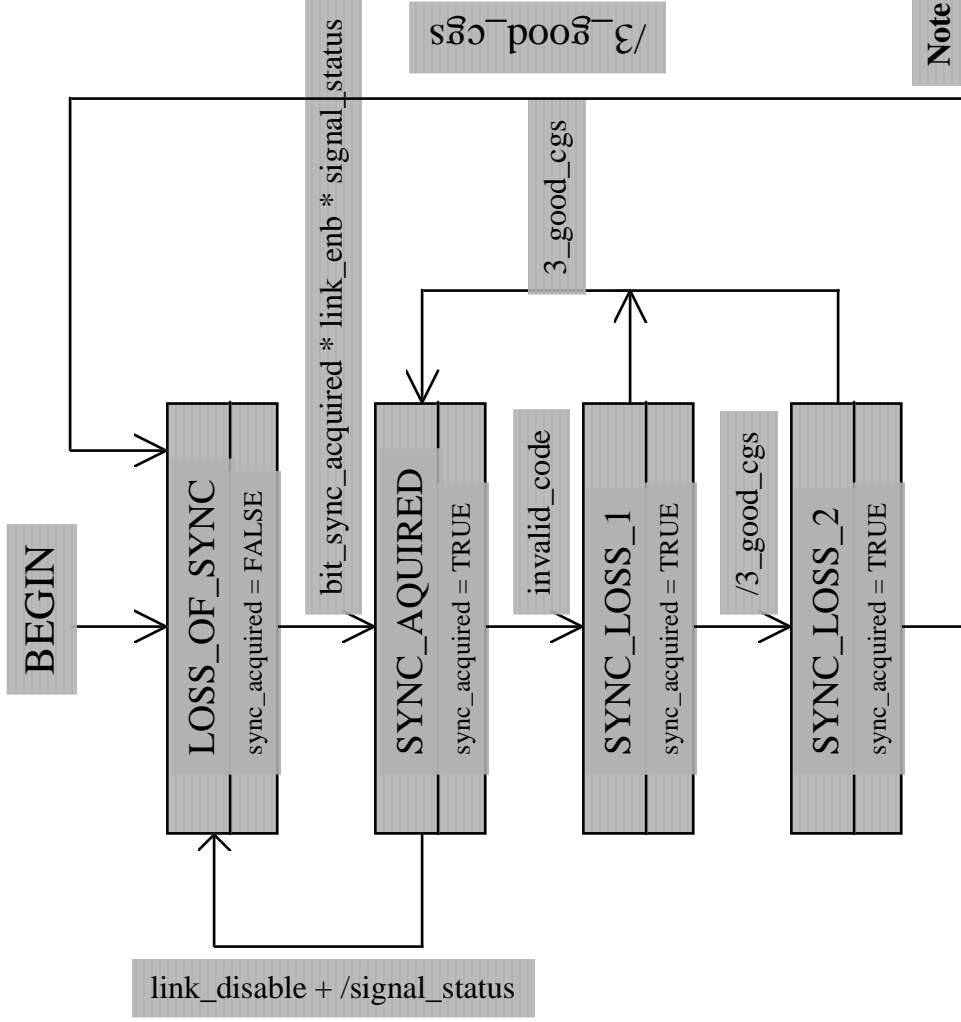
Assumptions and Terminology

- In all transitions where descision is based on PMA input, PMA_UNITDATA.indication is assumed.
- *signal_status*, here is used as indication of *signal_detect* by PMD.
- *signal_status* as defined in 802.3z/D1 draft is not used in the diagrams.
- / stands for **NOT**, * stands for **AND** and + stands for **OR**.
- *link_enb* stands for link enable by host.
- *receve_config* implies receiving of configuration data from the link partner.
- *config_request* implies configure request from host.
- *load_timer* loads the config timer.
- *config_time_out* implies *config_timer_long_done*
- By default the variables mean the same as defined in 802.3z/D1 clause 36.



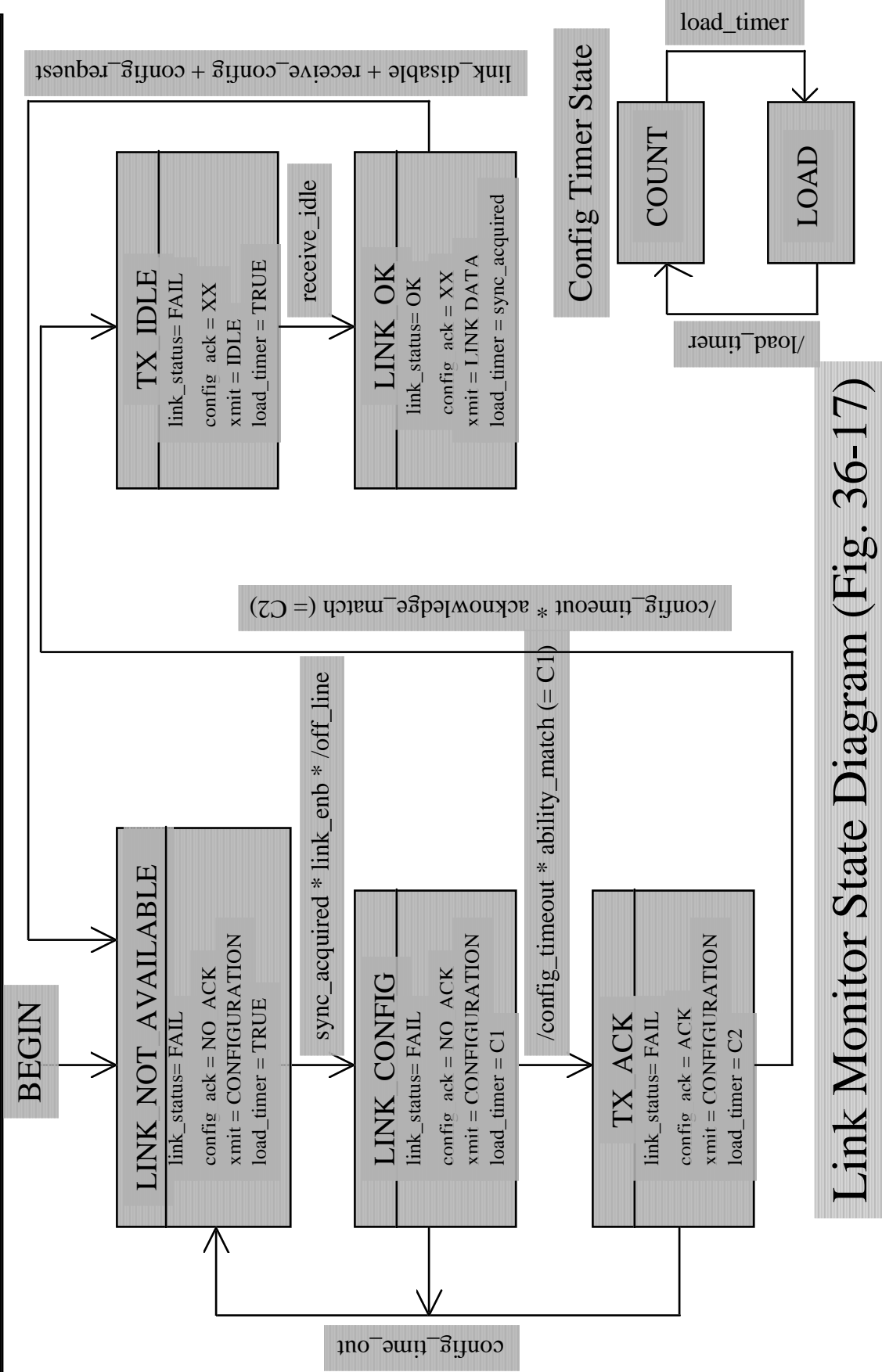
Note: PMA_UNITDATA.indicate is assumed for all transitions

Bit Synchronization State Diagram (Fig. 36-18)



Note: PMA_UNITDATA.indicate is assumed for all transitions

Code Synchronization State Diagram (Fig. 36-19)



Link Monitor State Diagram (Fig. 36-17)