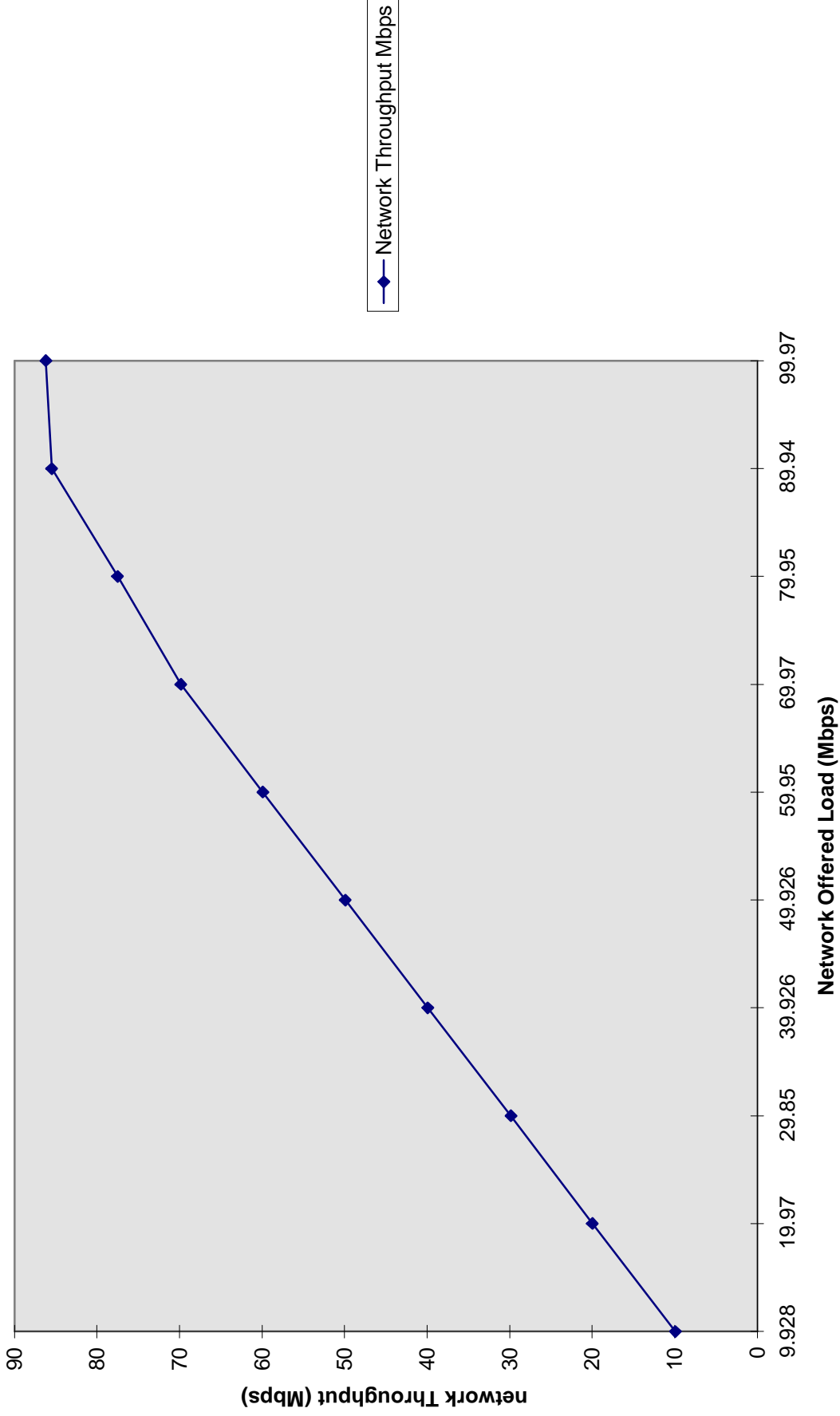




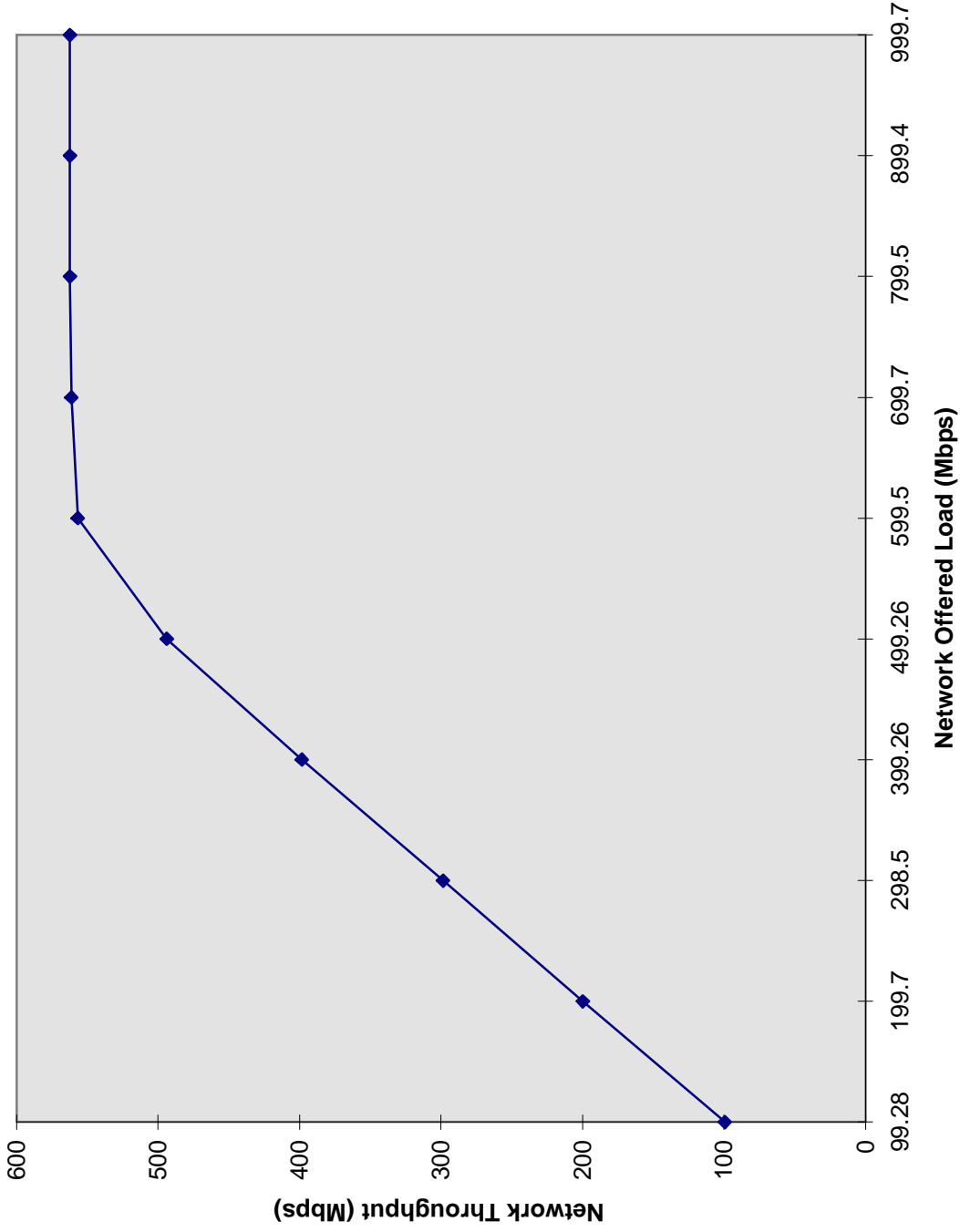
Network Throughput Vs. Network Offered Load (100 Mbps)
(15 stations, Packet Size Distributions - Work group Average)



—◆— Network Throughput Mbps

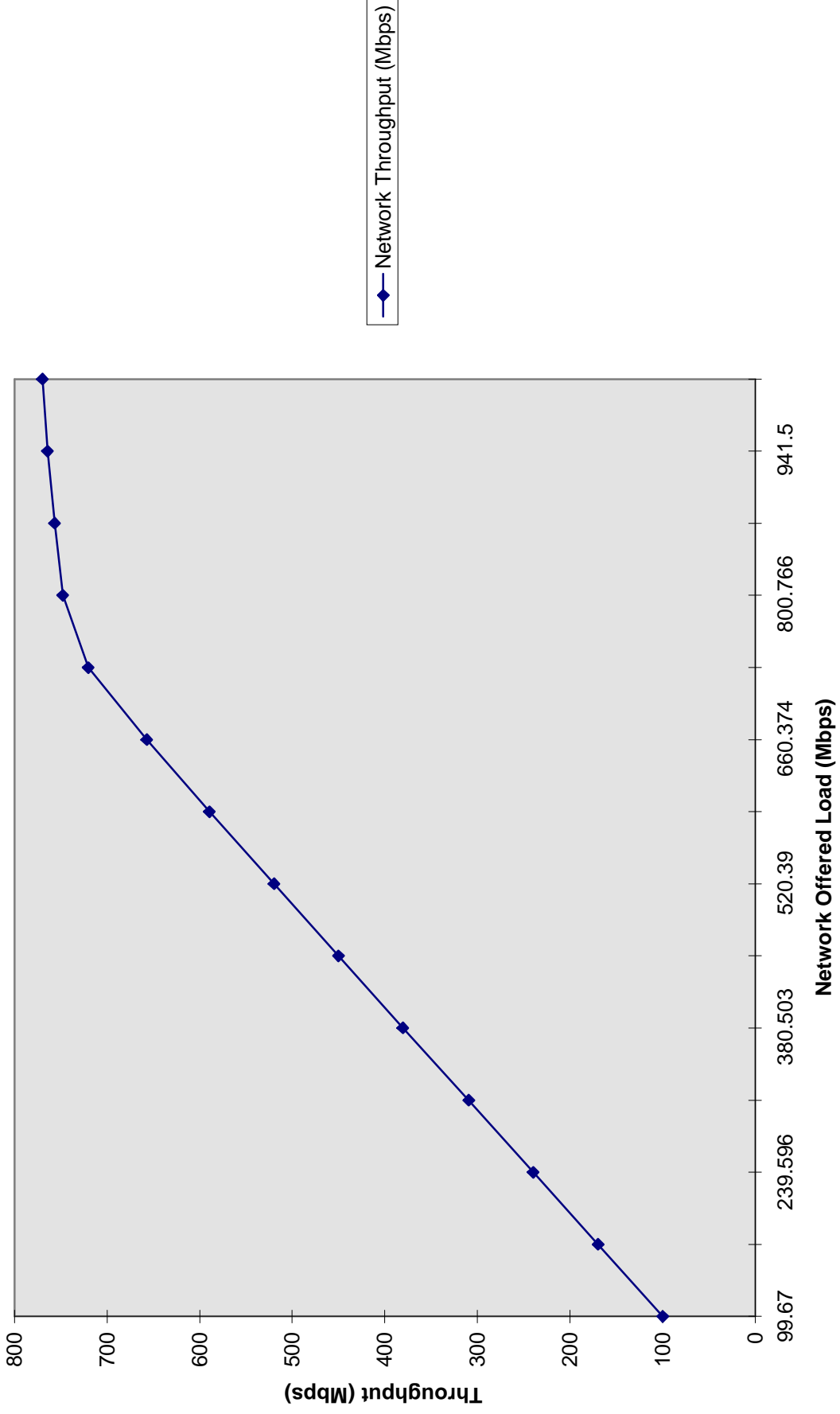


**Network Throughput Vs. Network Offered Load (1000 Mbps)
(15 stations, Packet Size Distribution - WorkGroup Average)**



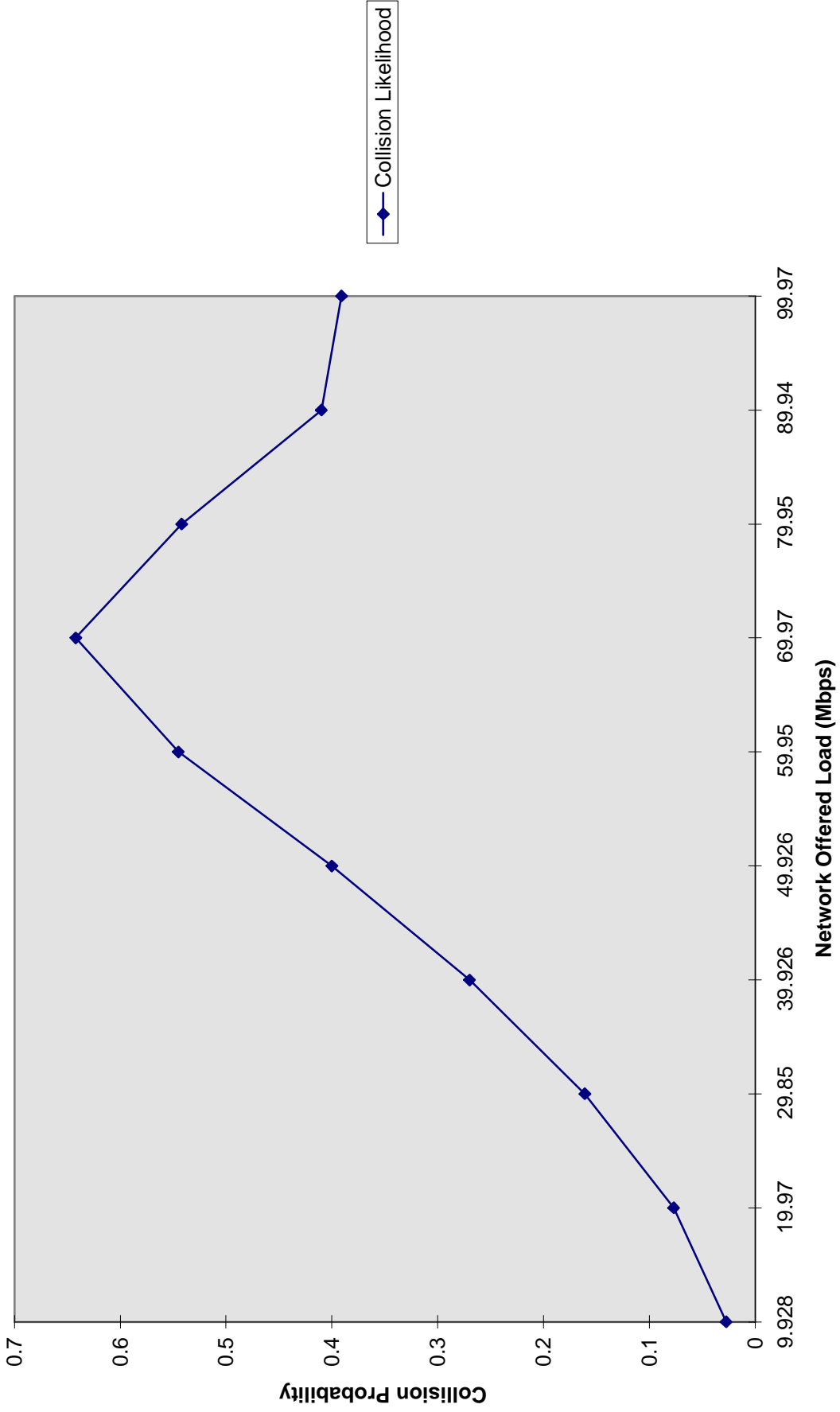


Network Throughput Vs. Offered Load
(15 stations, 1000 Mbps, Background Load - 100 Mbps, Increasing Bursty Traffic)





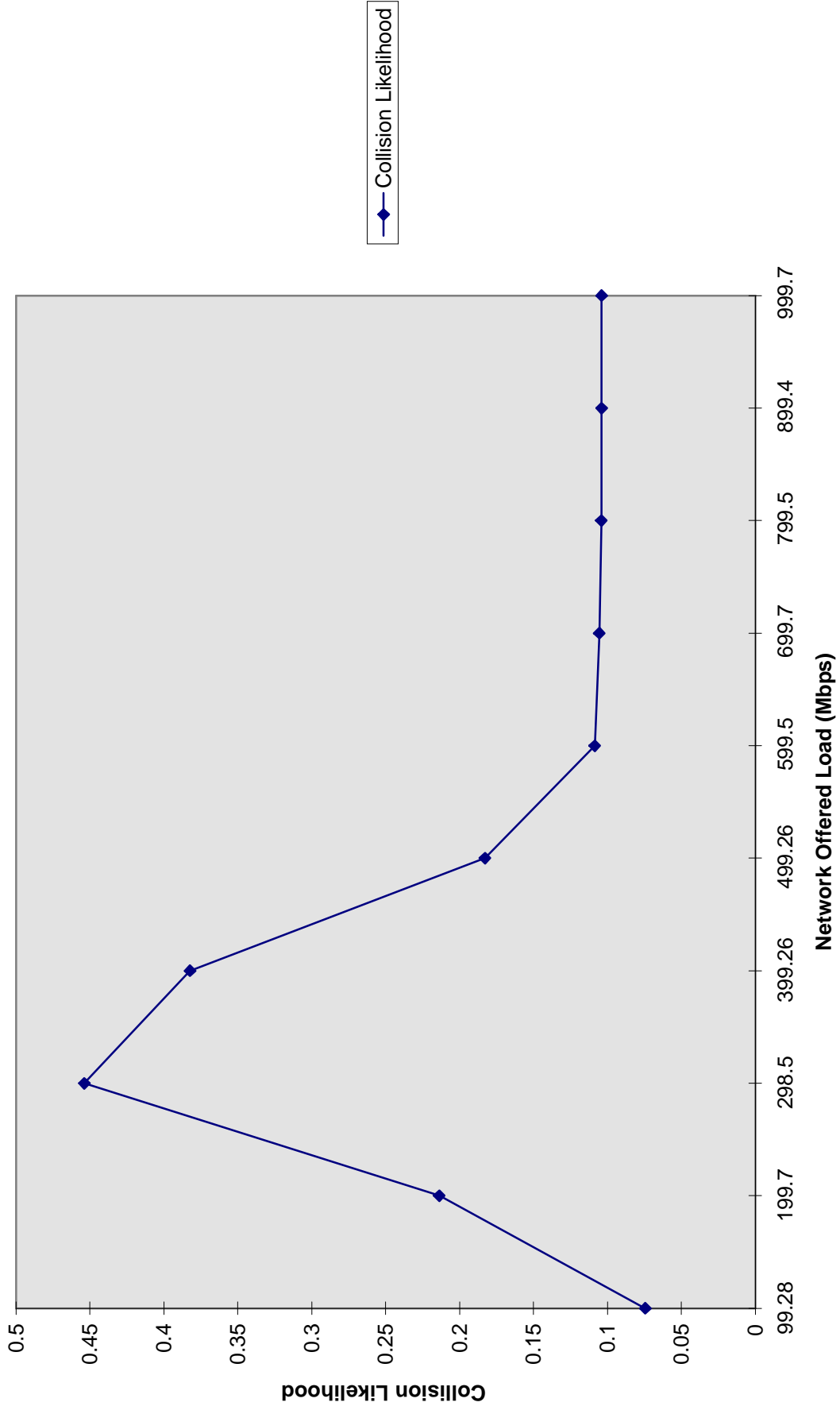
Collision Likelihood Vs. Network Offered Load (100 Mbps)
(15 stations, Packet Size Distributions - Work group Average)



Collision Likelihood

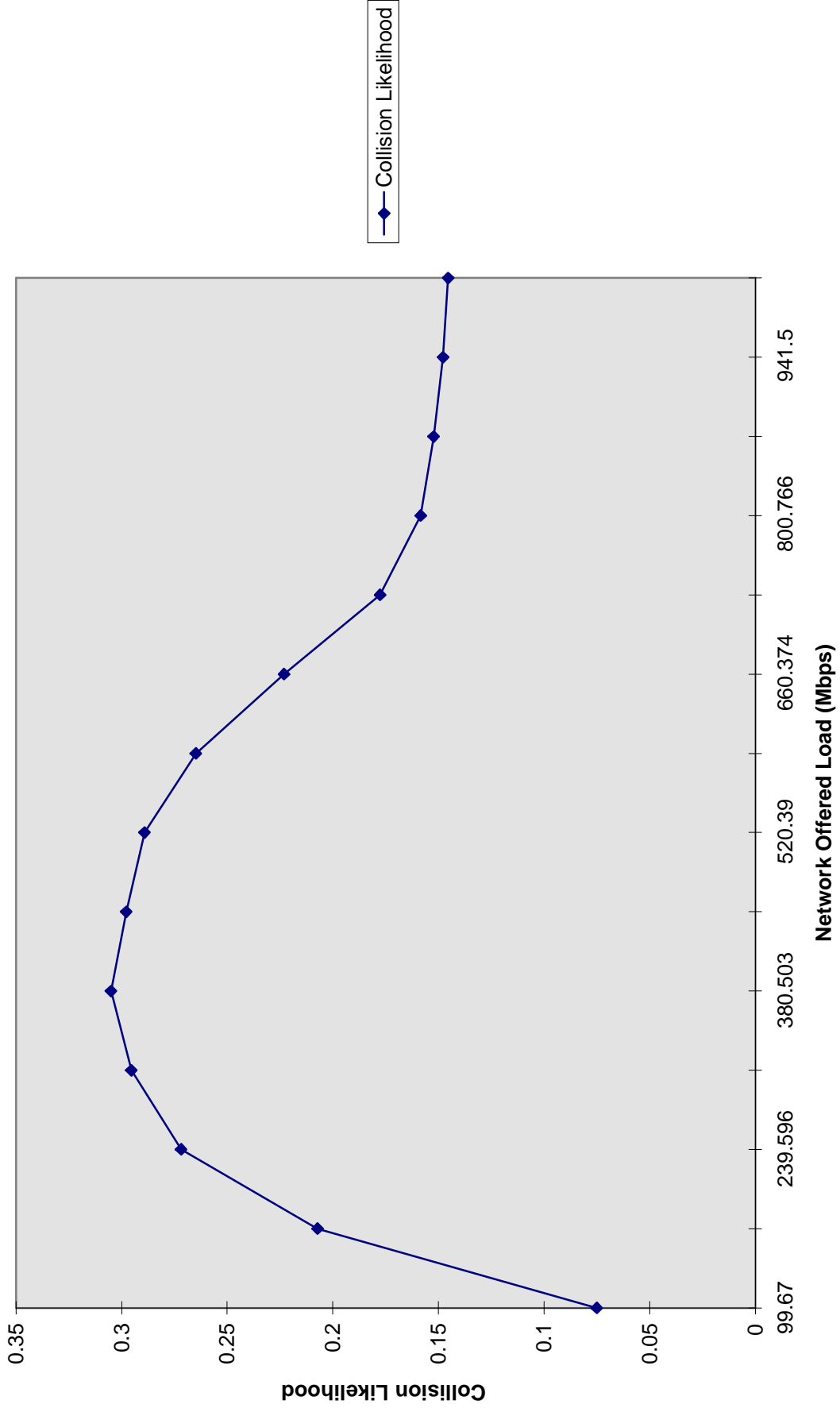


Collision Likelihood Vs. Network Offered Load (1000 Mbps Network)
(15 stations, Packet Size Distribution - WorkGroup Average)



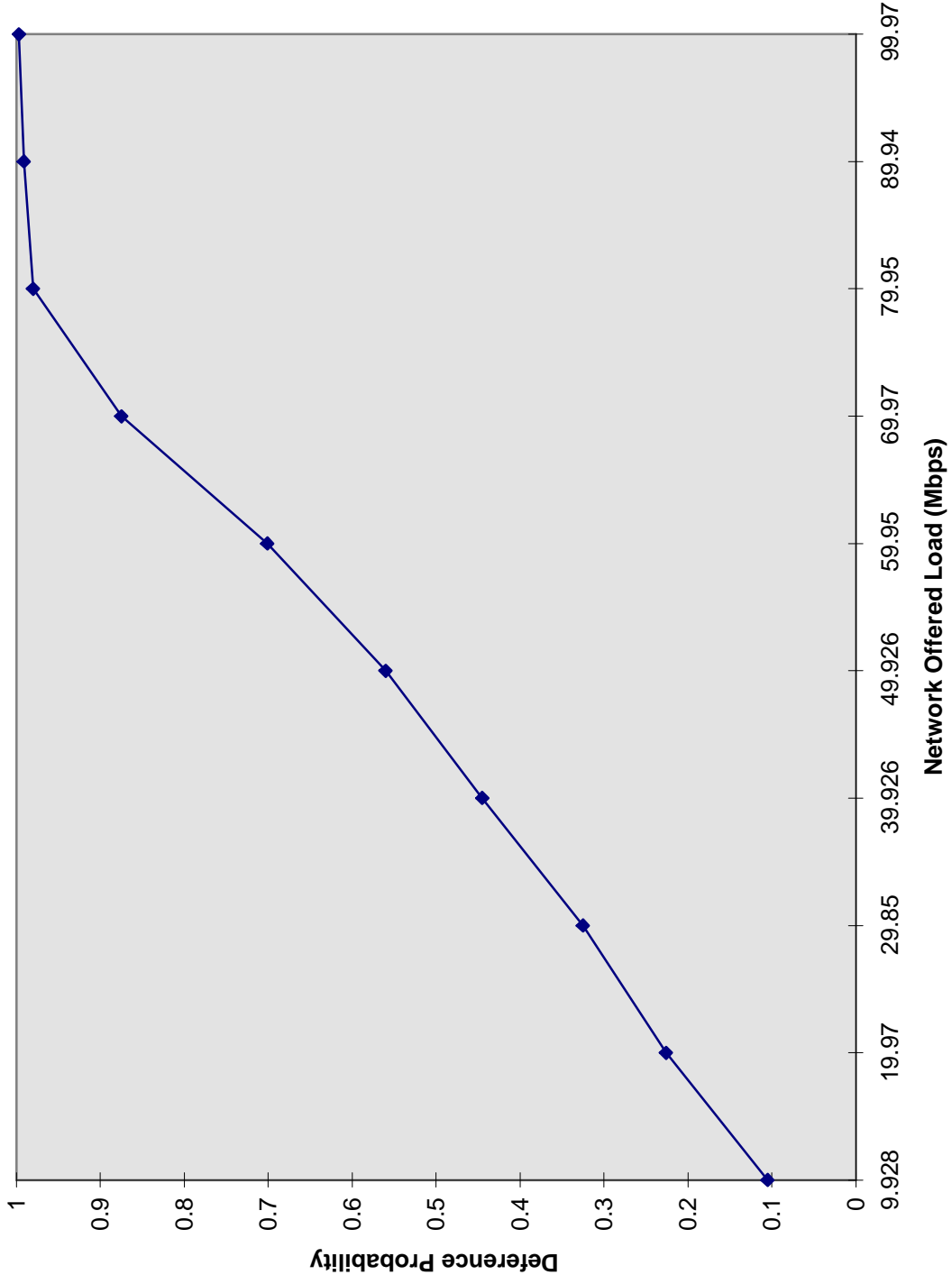


Collision Likelihood Vs. Offered Load
(15 stations, 1000 Mbps, Background Load - 100 Mbps, Increasing Bursty Traffic)





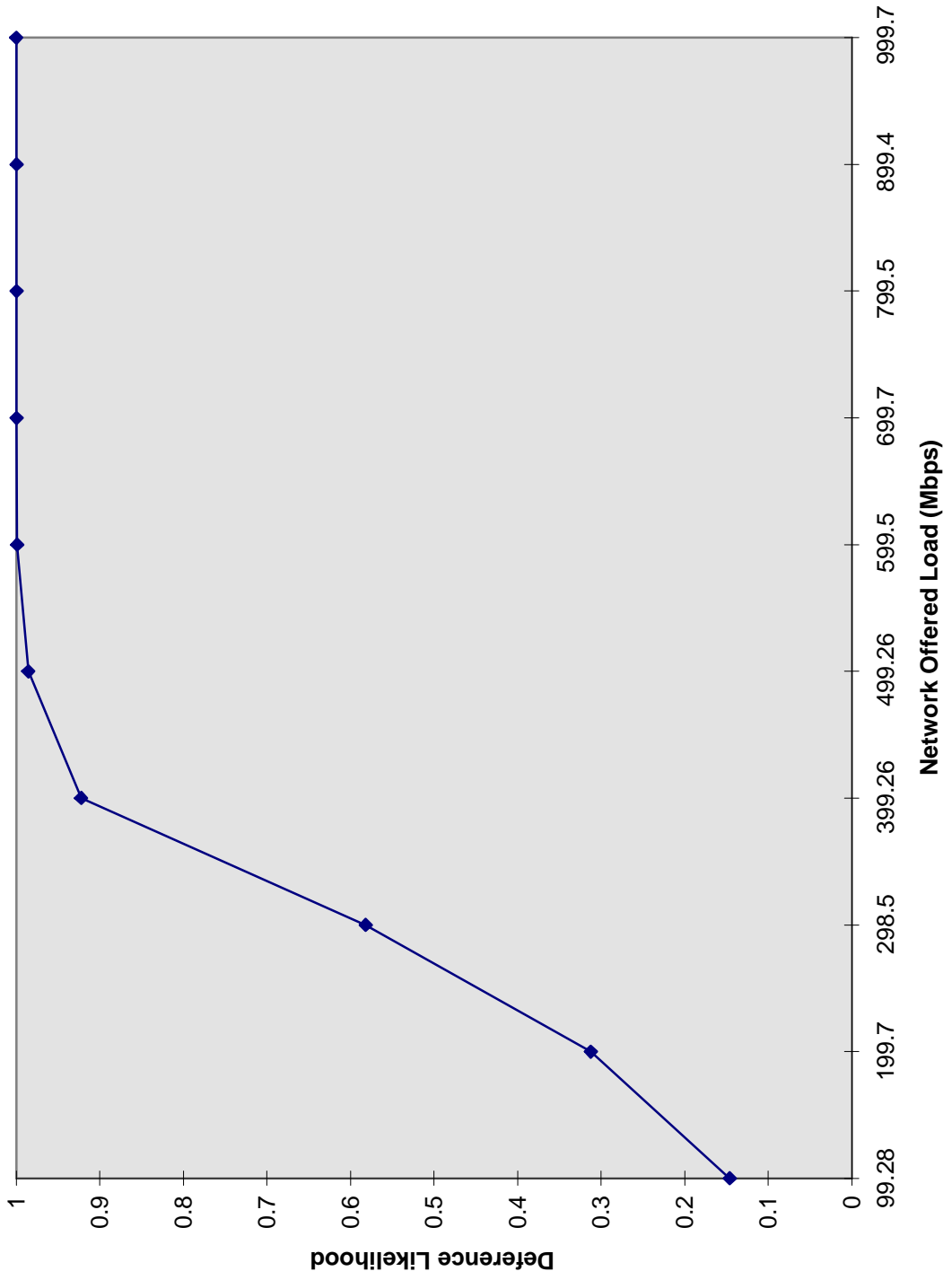
Deference Likelihood Vs. Network Offered Load (100 Mbps)
(15 stations, Packet Size Distributions - Work group Average)



Deference Likelihood



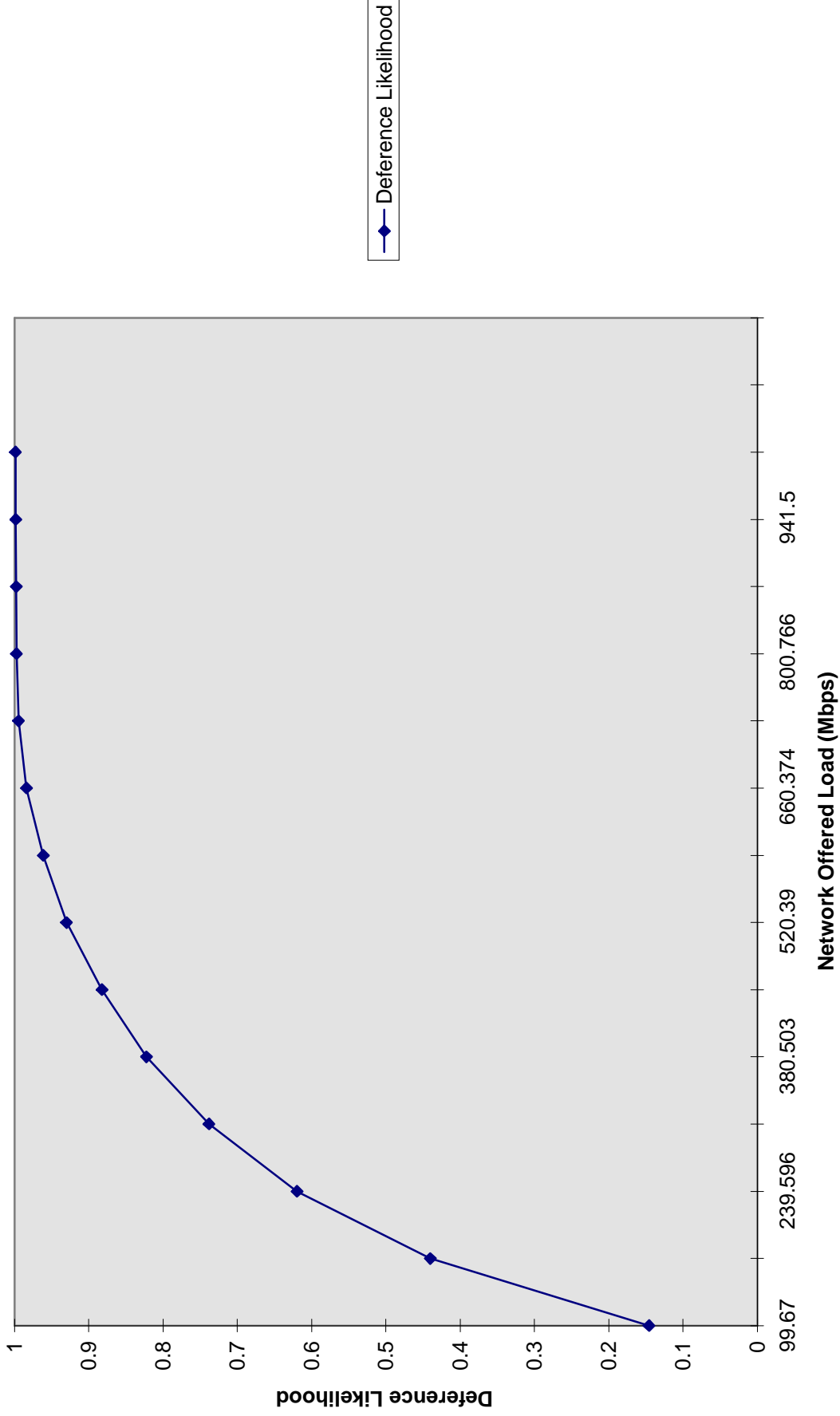
**Deference Likelihood Vs. Network Offered Load (1000 Mbps)
(15 stations, Packet Size Distribution - WorkGroup Average)**



—◆ Deference Likelihood



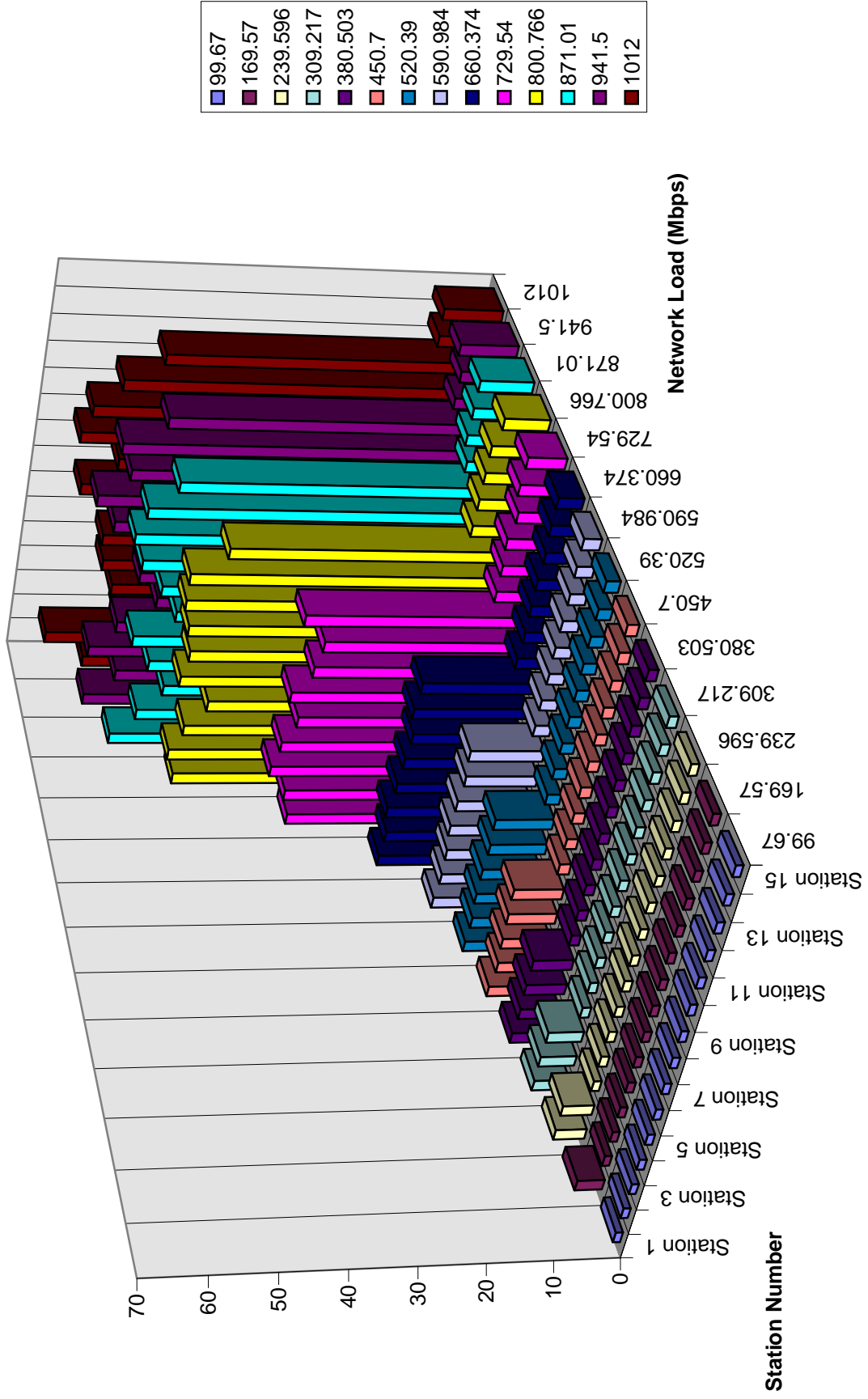
Deference Likelihood Vs. Offered Load
(15 stations, 1000 Mbps, Background Load - 100 Mbps, Increasing Bursty Traffic)



—◆— Deference Likelihood

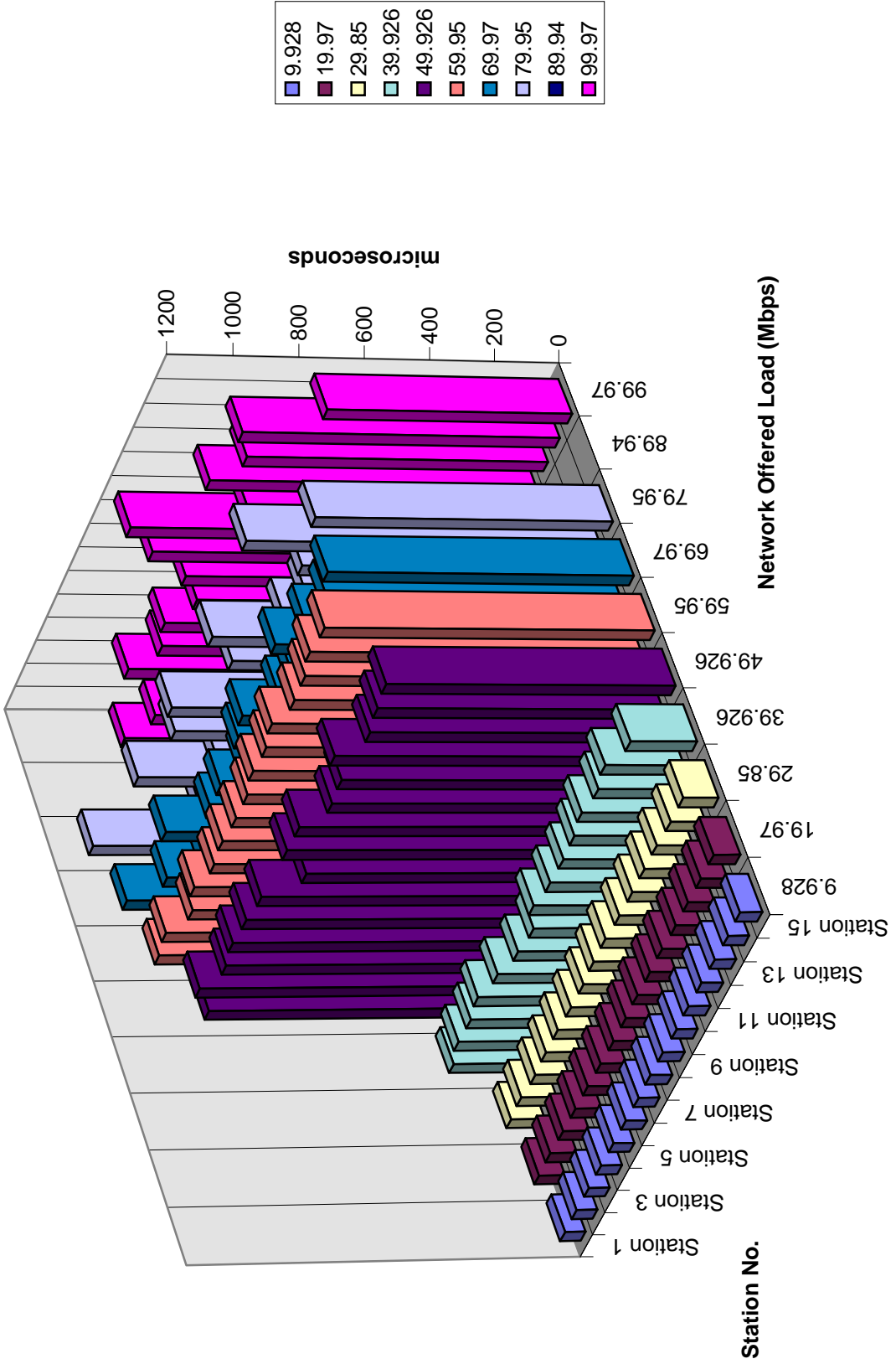


Mean number Consecutive Packets Vs. Network Load
(15 stations, 1000 Mbps, Background Load - 100 Mbps, Increasing Bursty Traffic)





**Packet Access Latency Vs. Network Offered Load (100 Mbps)
(15 stations, Packet Size Distribution - WorkGroup Average)**





Packet Access Latency Vs. Network Offered Load (1000 Mbps)
(15 stations, Packet Size Distribution - WorkGroup Average)

