

Fiber Optic Cabling Survey

Background

- Survey developed to complement the work initiated by Compaq and others directed to address distances and fiber types in the installed base .
- Review copy distributed (reflector) July 96

Purpose

- The purpose of the survey is to characterize the lengths and type of installed optical fiber used in commercial building telecommunication designs.
- Survey definitions are based on TIA/EIA-568-A Commercial Building Telecommunications cable Standard and TIA/EIA-569-Commercial Building Standard for Telecommunications Pathways and Spaces

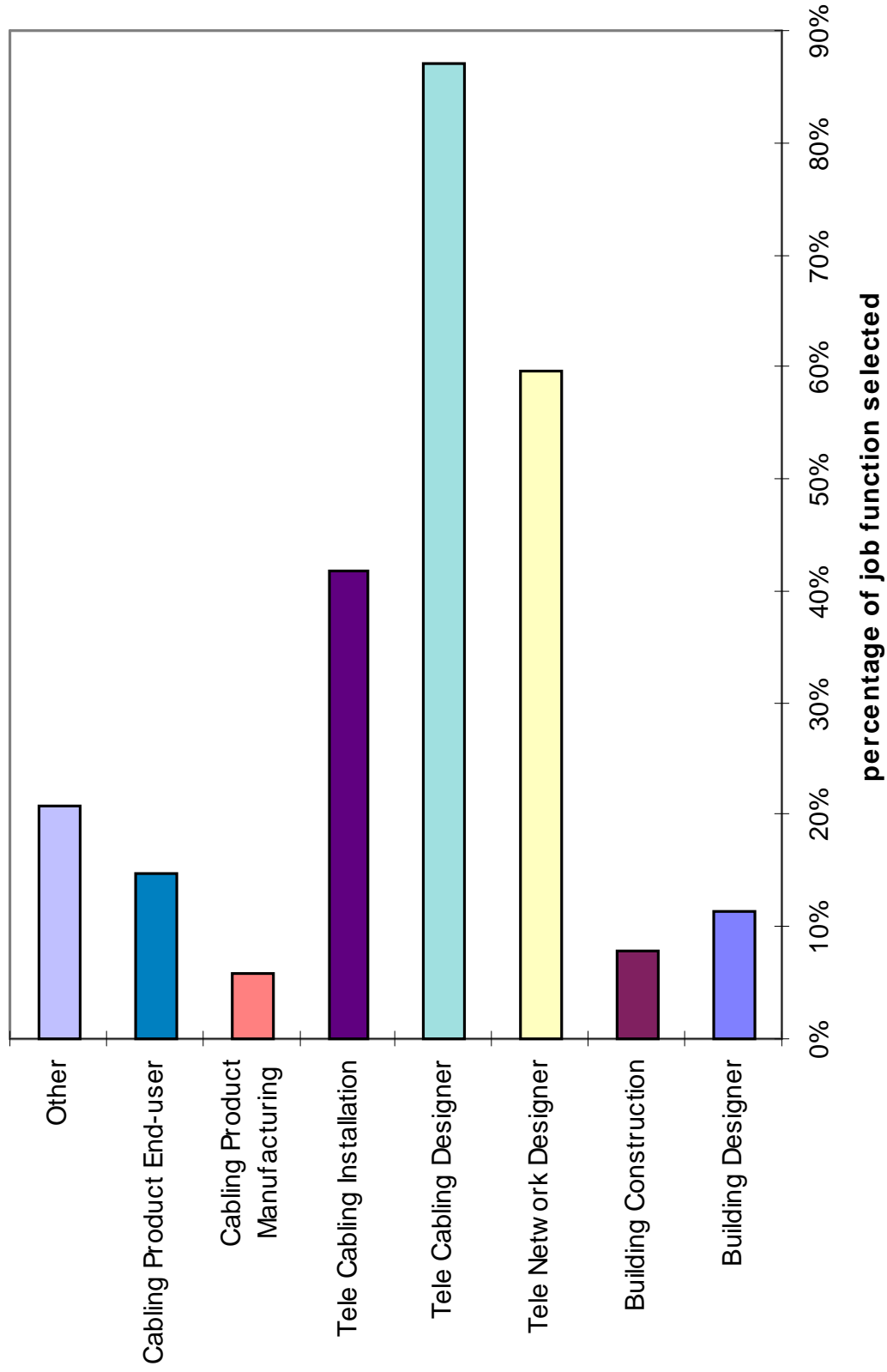
Survey Methodology

- Survey distributed by the Building Industry Consulting Service International (BICSI) to their Registered Communication Distribution Designers' (RCDD) (203 respondents).

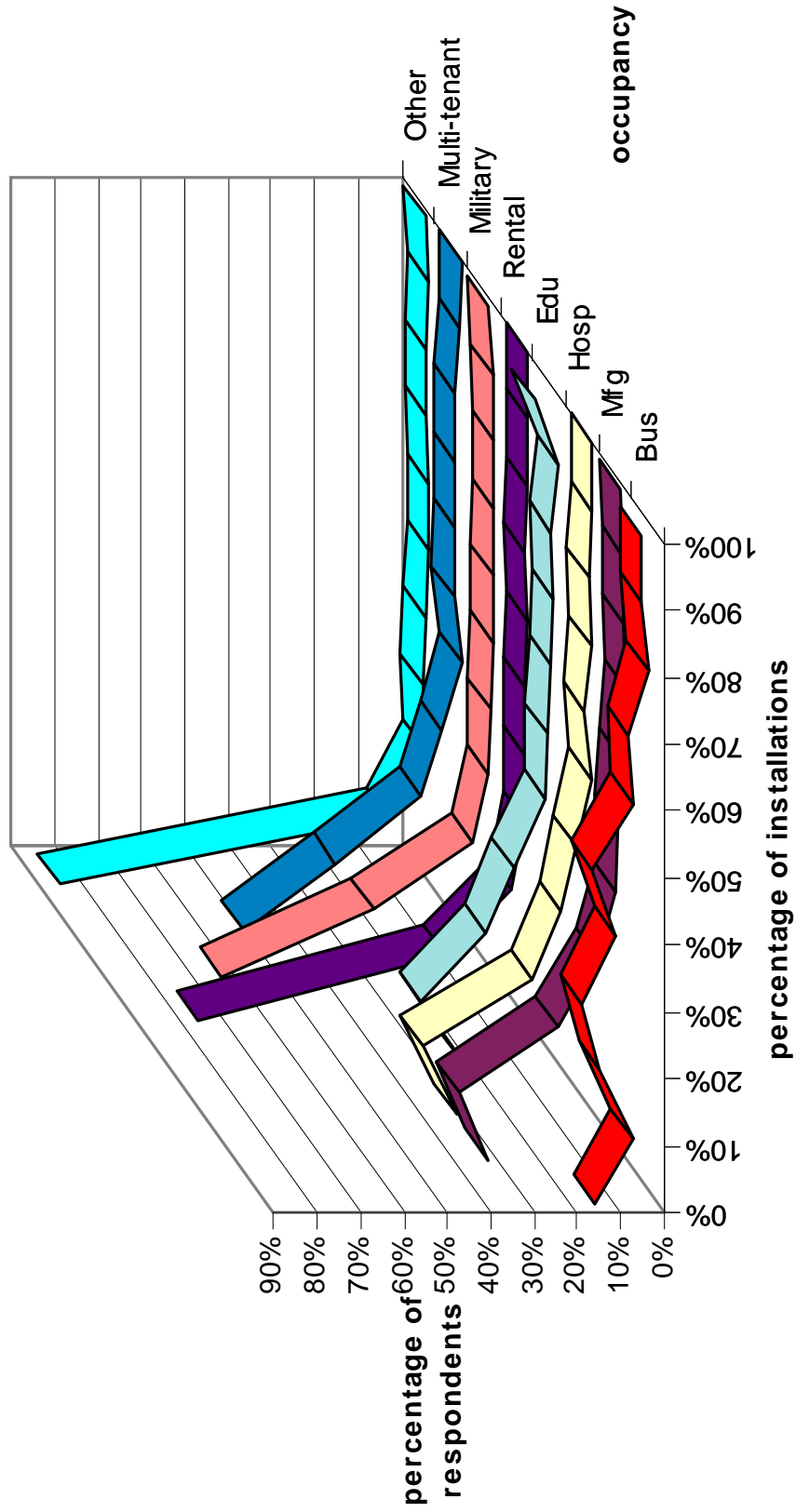
Target Respondents

- Building Designer
- Building Construction
- Cabling Designer
- Cabling Installation

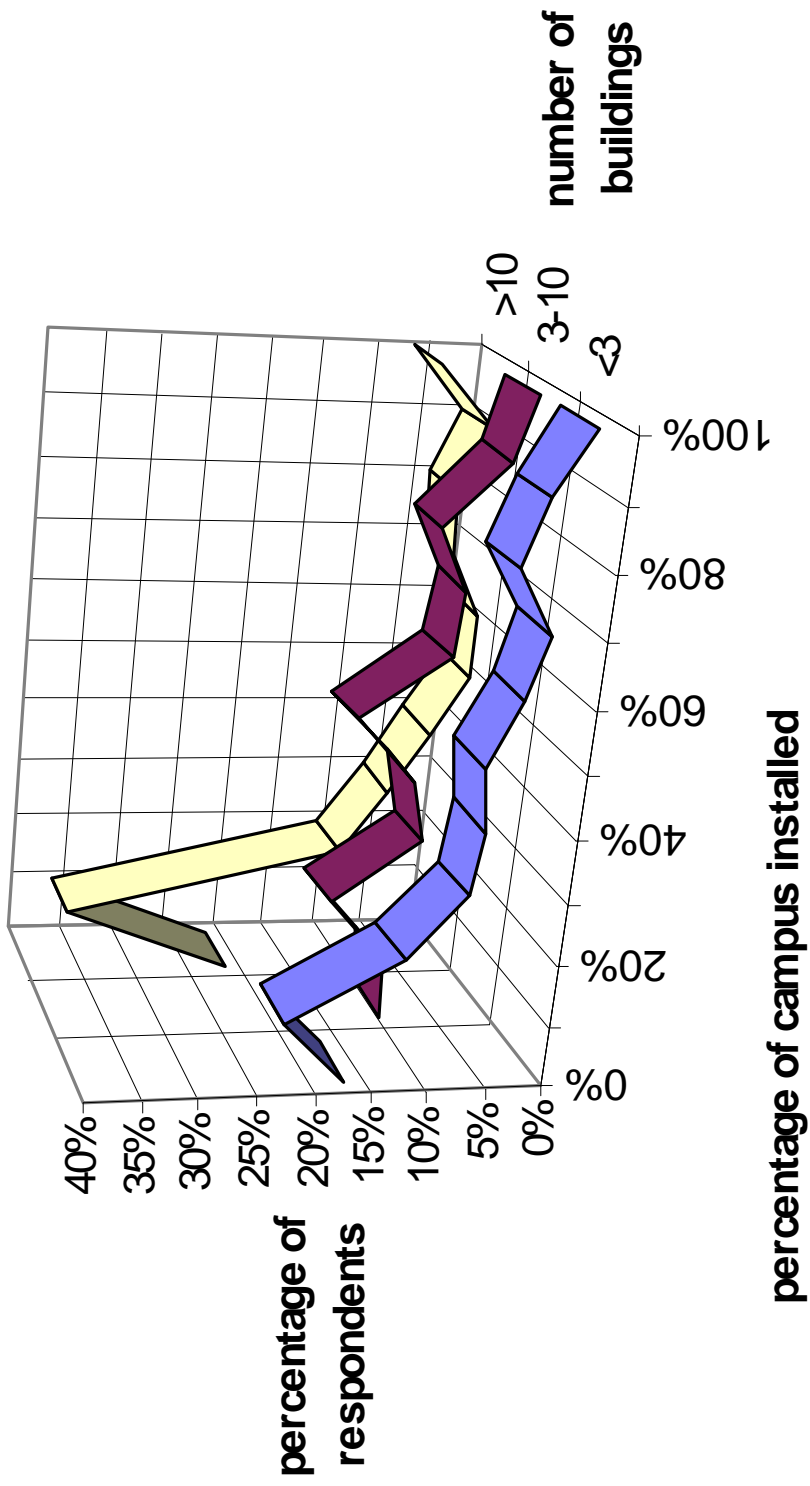
Job Function



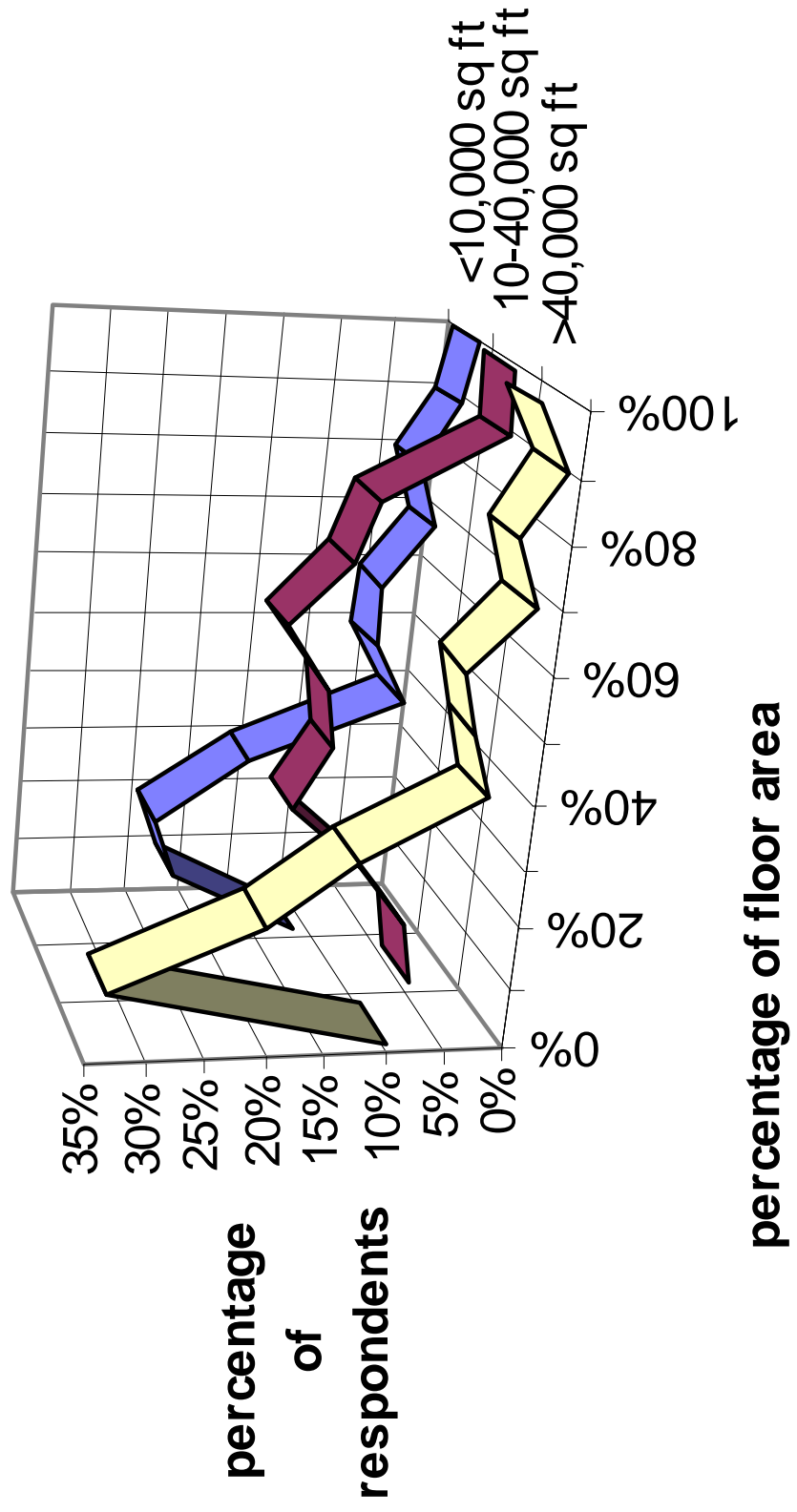
Industry Served



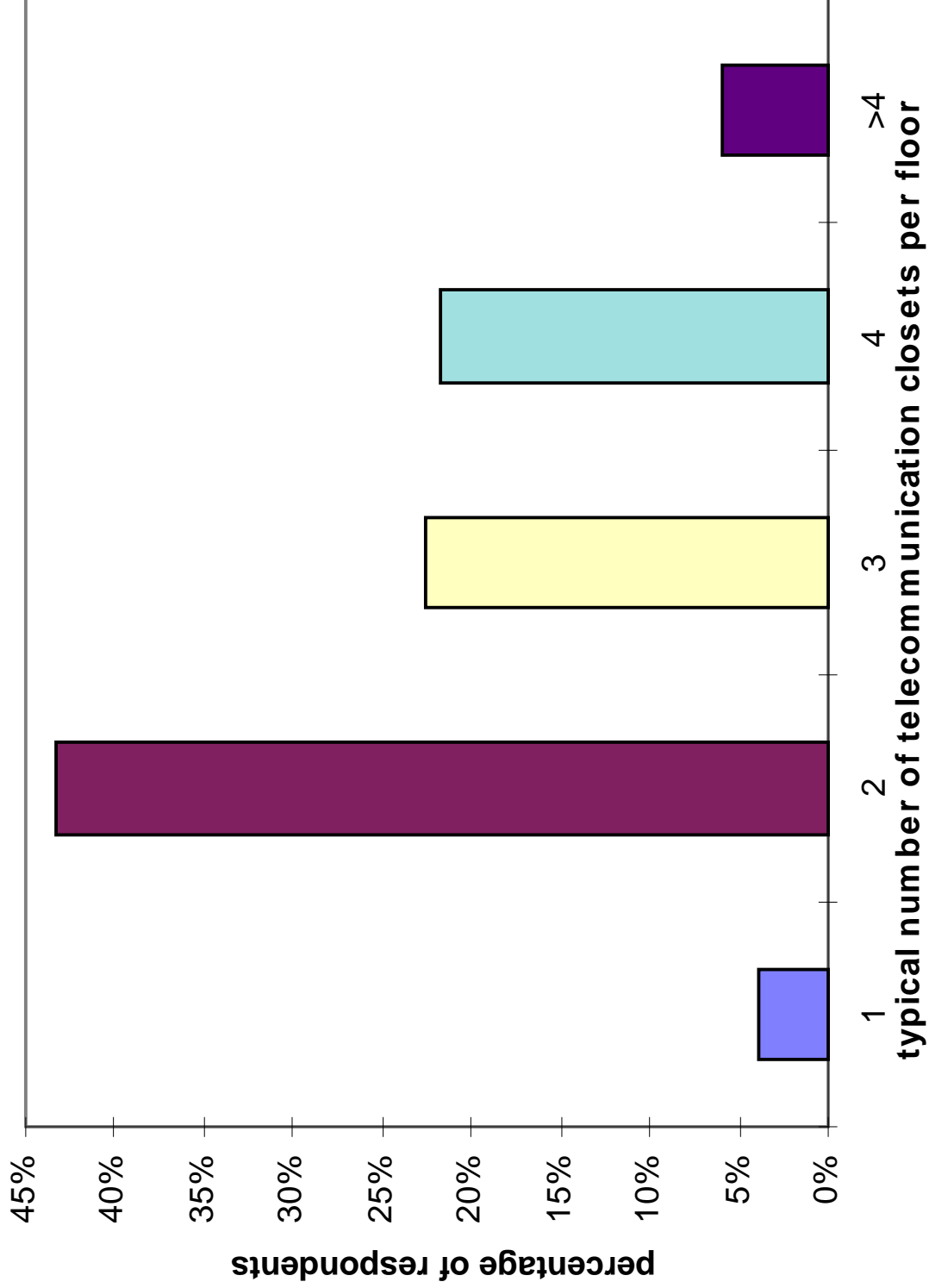
Campus



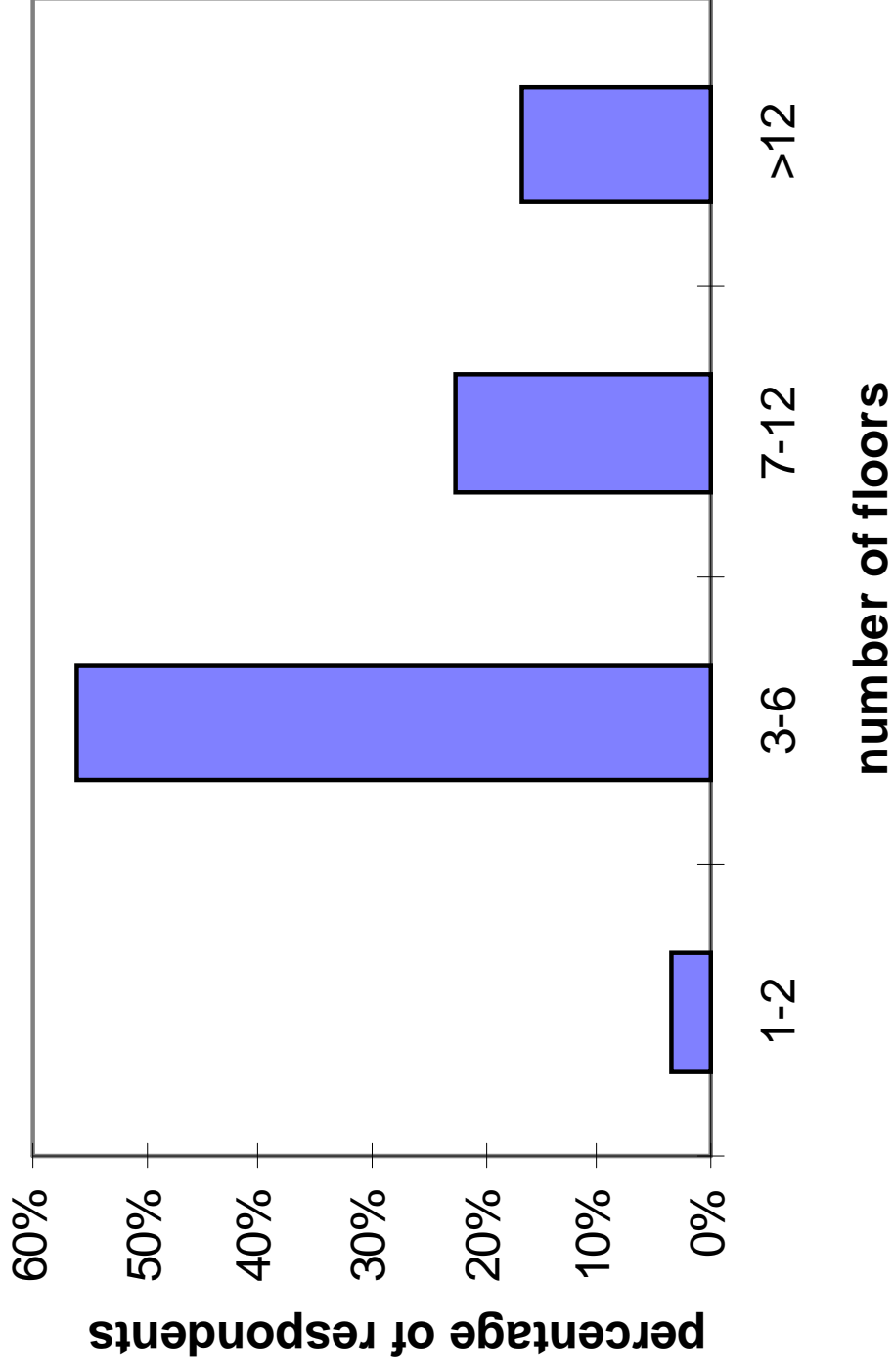
Floor Area



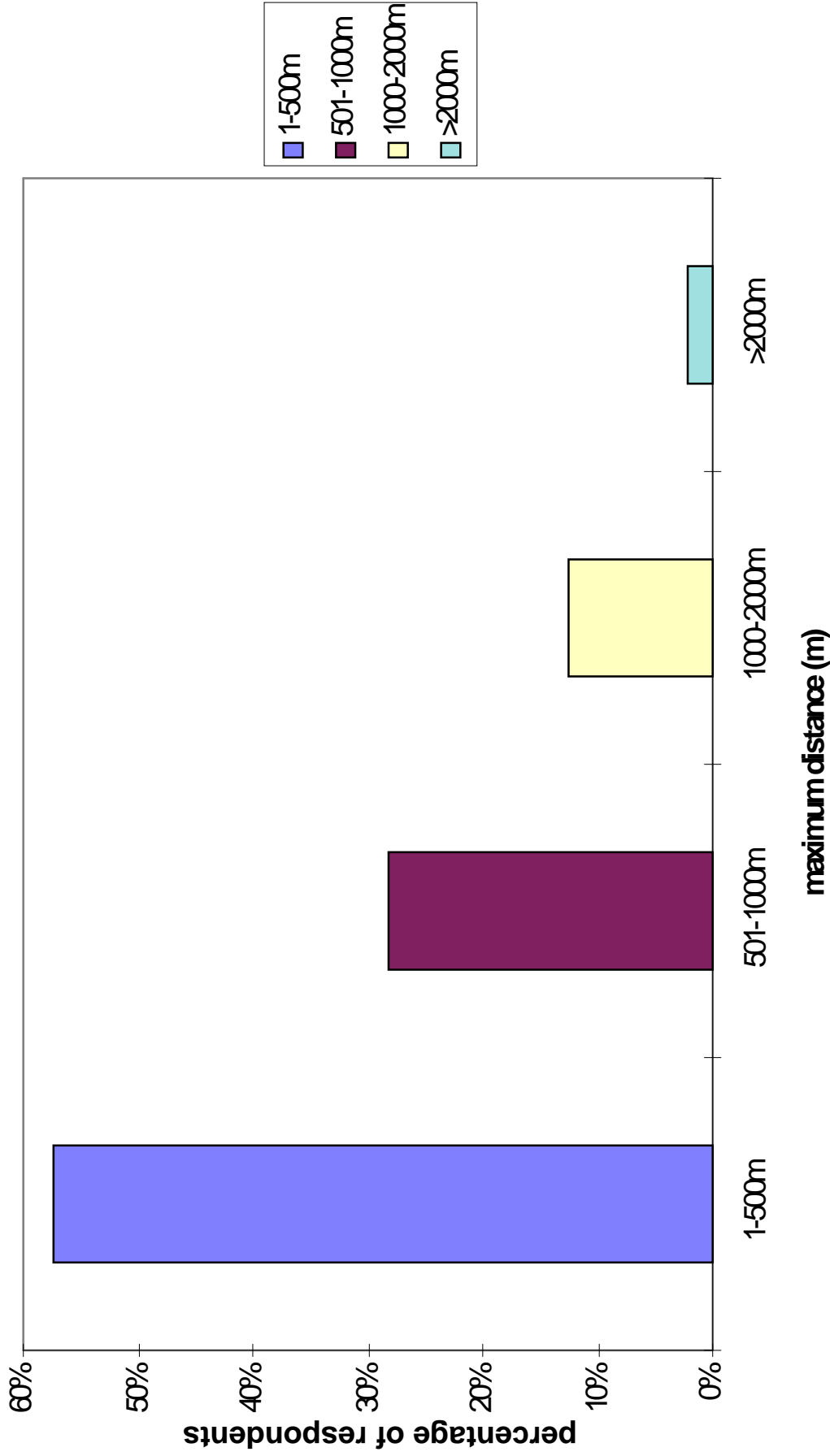
Telecommunication Closets Per Floor



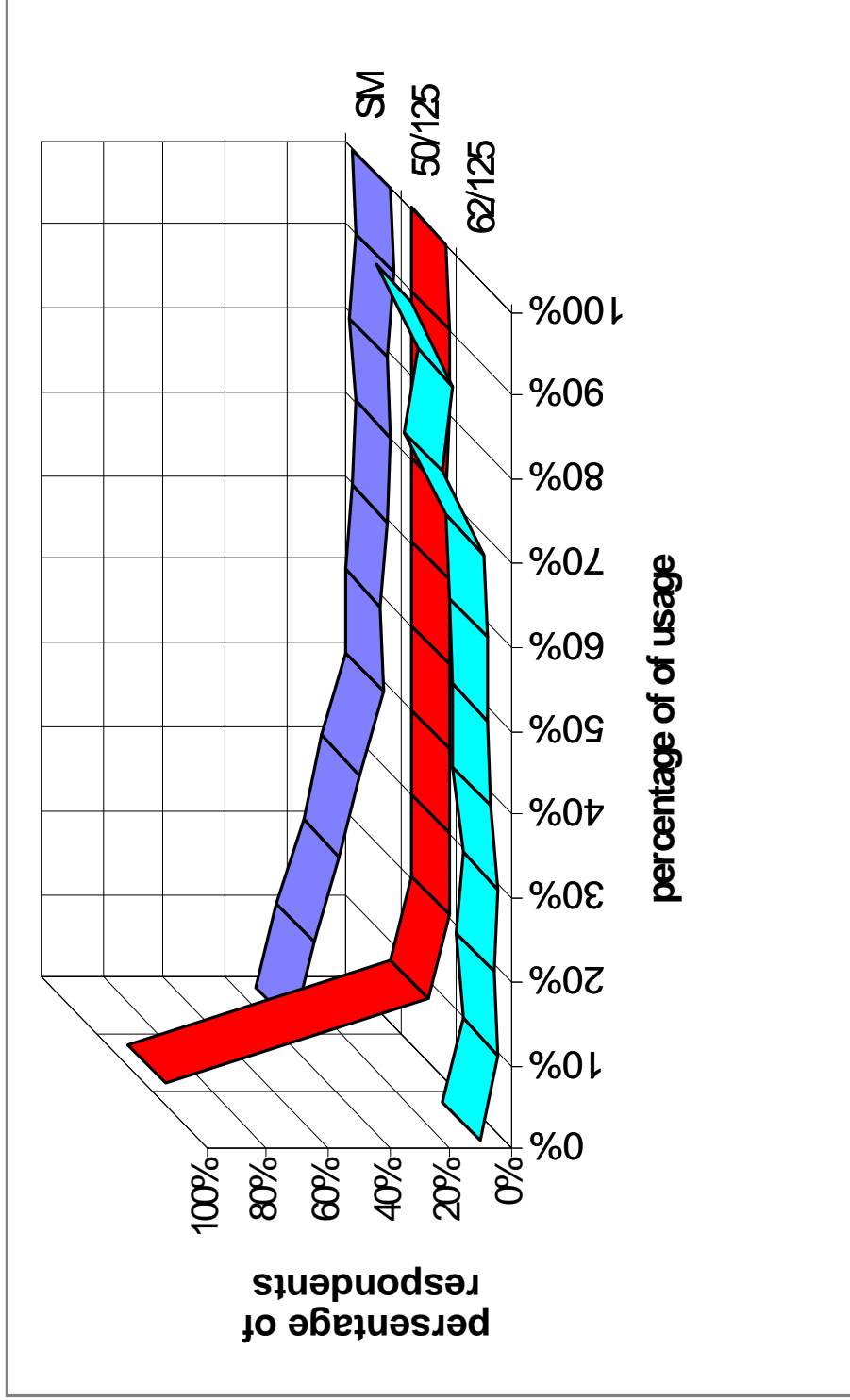
Typical Number Of Floors



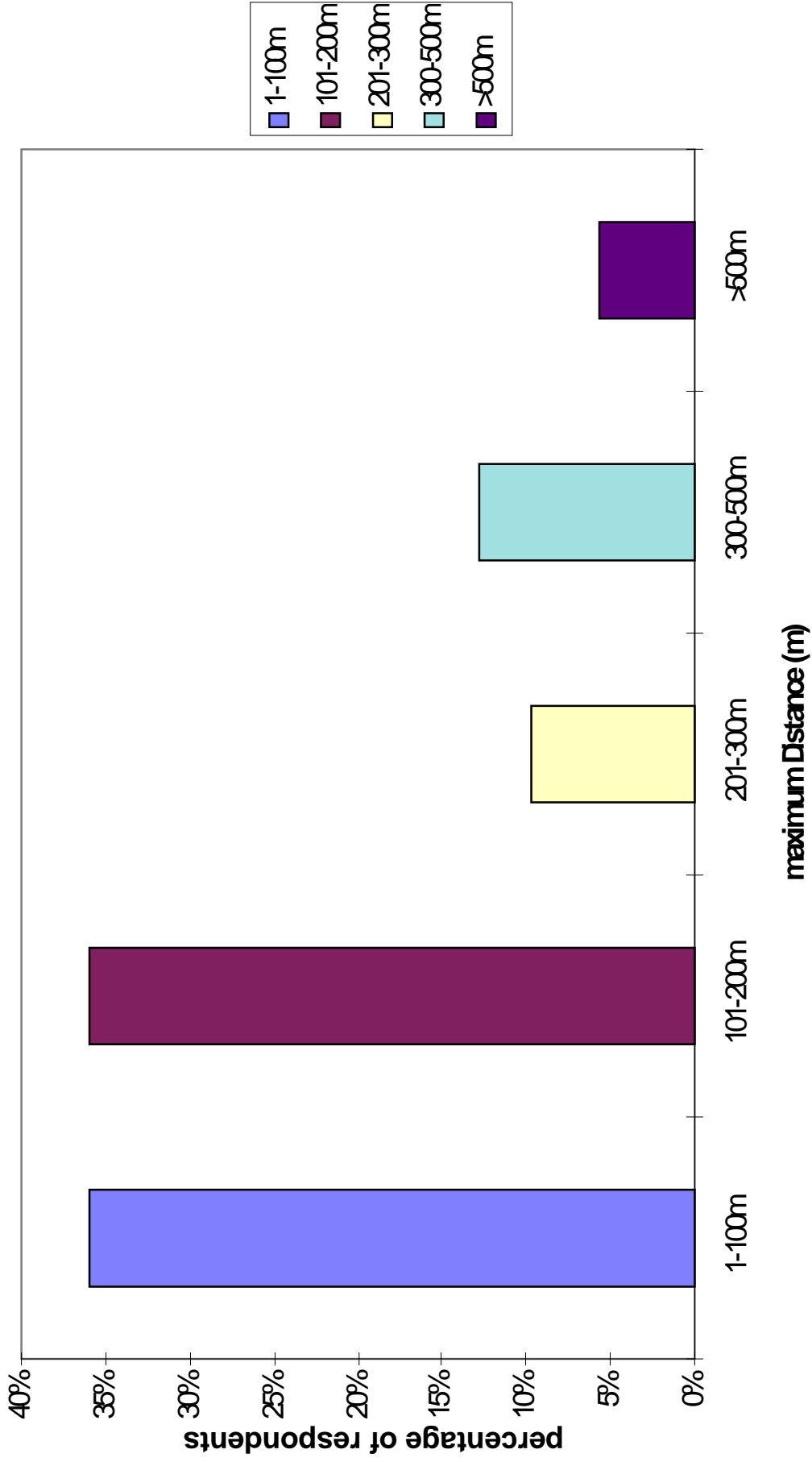
Interbuilding Backbone Fiber Distances



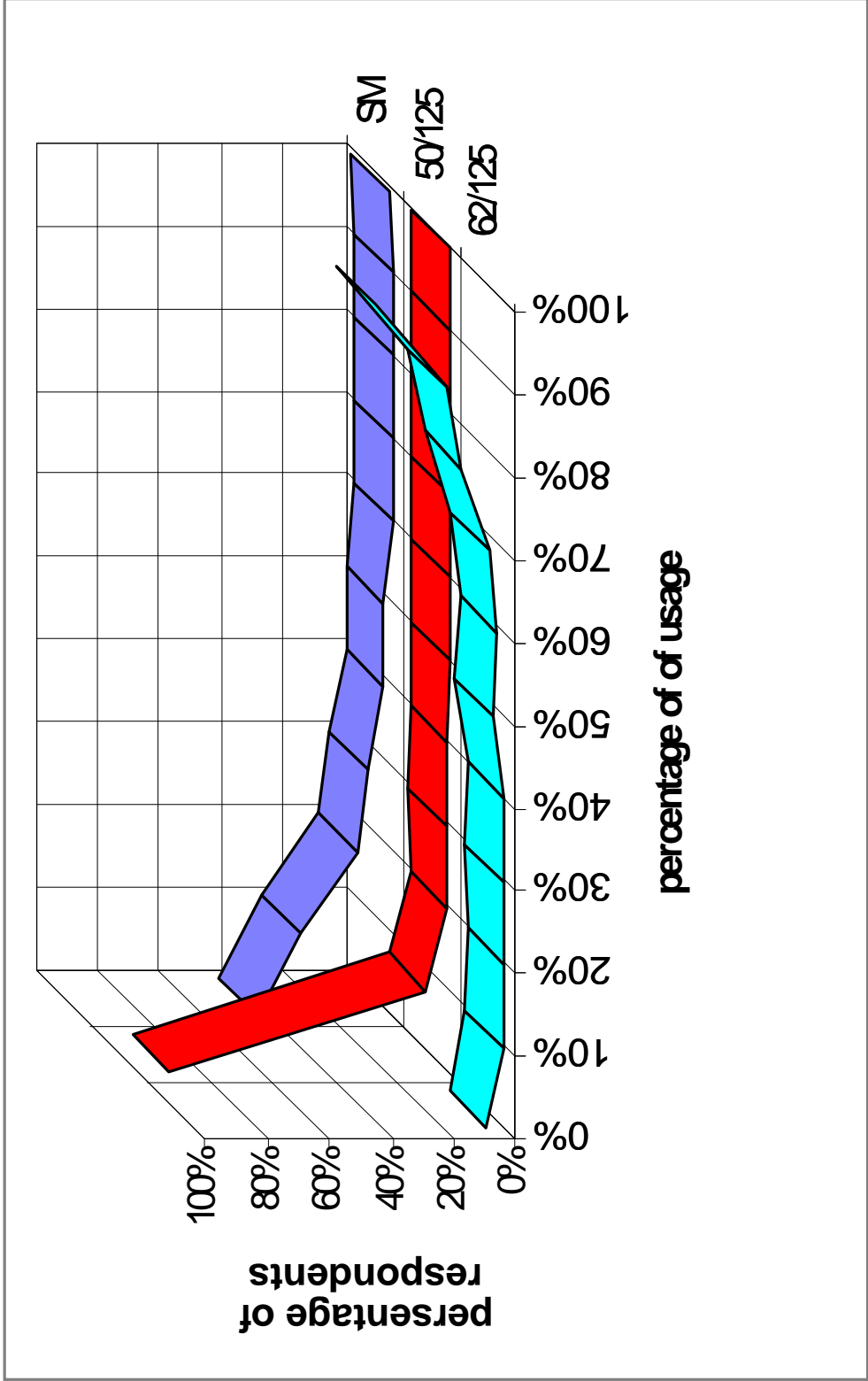
Interbuilding Backbone Fiber Types



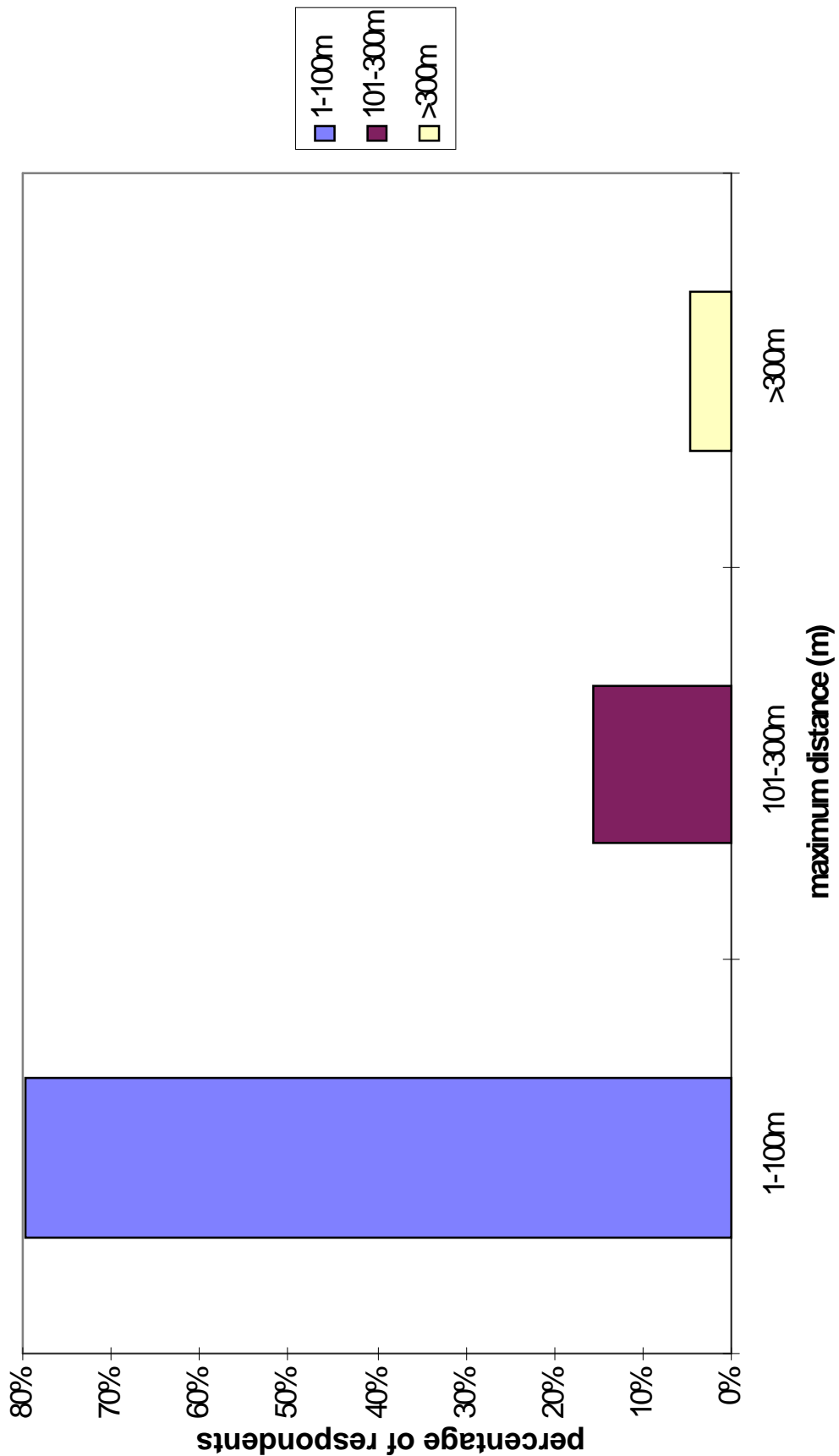
Intrabuilding Backbone Fiber Distance



Intrabuilding Backbone Fiber Types



Horizontal Fiber Cabling Distances



Horizontal Cabling Fiber Types

