

1 **Replace Annex M with the following:**

2 **Annex M**

3
4 **(Informative)**

5
6 **C-Port in Port Mode**
7 **using the TXI and TKP Access Protocols**

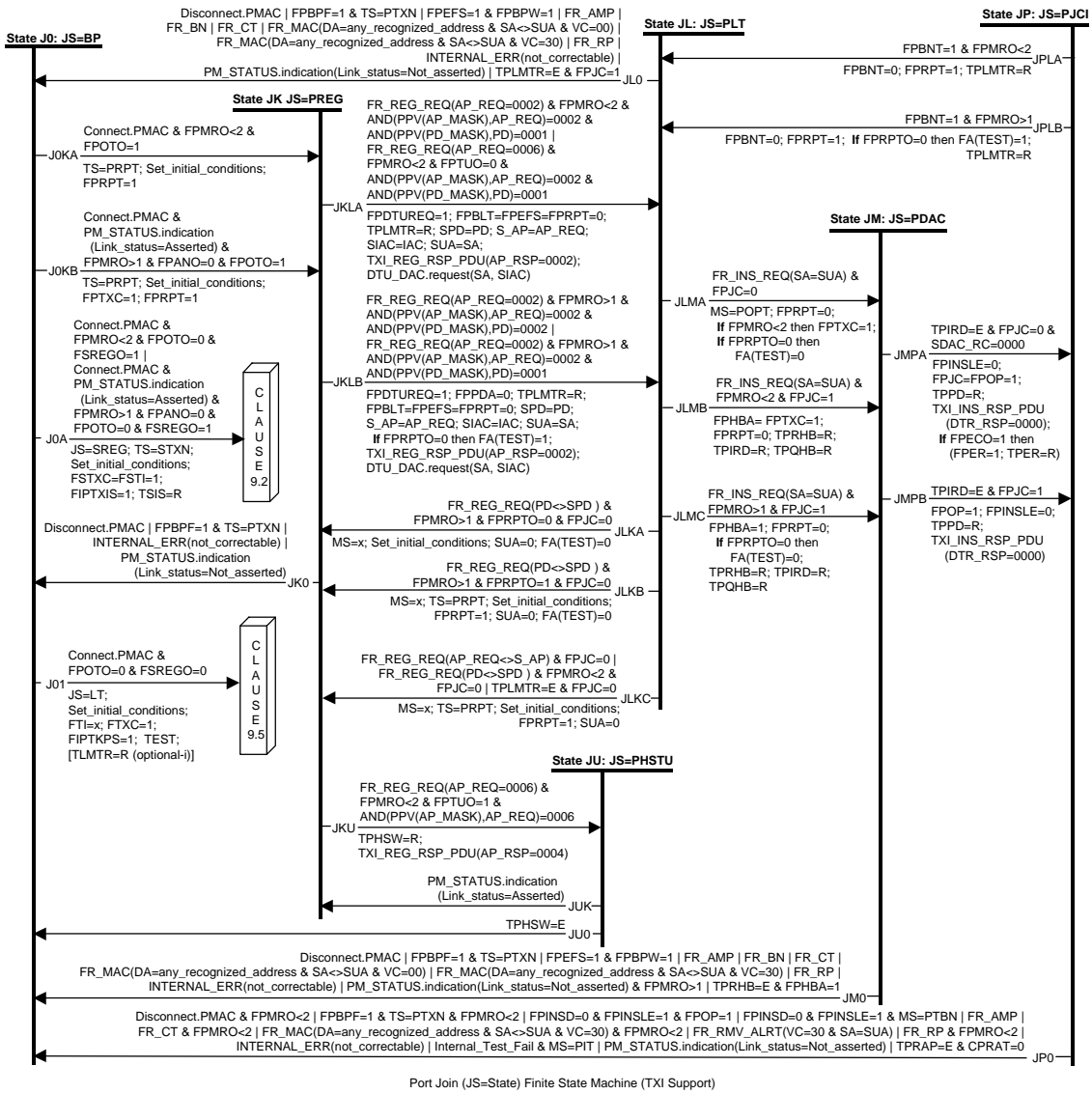
8
9 **~~C-Port~~ Join,**
10 **Transmit and Monitor ~~TXI Access Protocol~~**
11 **low-level FSMs**

12 **4 Mbit/s, 16 Mbit/s and the High Media Rate**

13 This annex presents the clause 9.3 FSMs contained in Figures 9.3-1, through 9.3-3 with the same level of
14 detail that can be found for state transitions in the C-Port Port Operation Tables found in Tables 9.3-1
15 through 9.3-3.

- 16 • Figure M-1 contains the C-Port Join FSM for TXI support with the state transition detail of 9.3,
17 Table 9.3-1.
- 18 • Figure M-2 contains the C-Port Join FSM for TKP support with the state transition detail of 9.3,
19 Table 9.3-1.
- 20 • Figure M-3 contains the C-Port Transmit FSM with the state transition detail of 9.3, Table 9.3-2.
- 21 • Figure M-4 contains the C-Port Monitor FSM with the state transition detail of 9.3, Table 9.3-3.

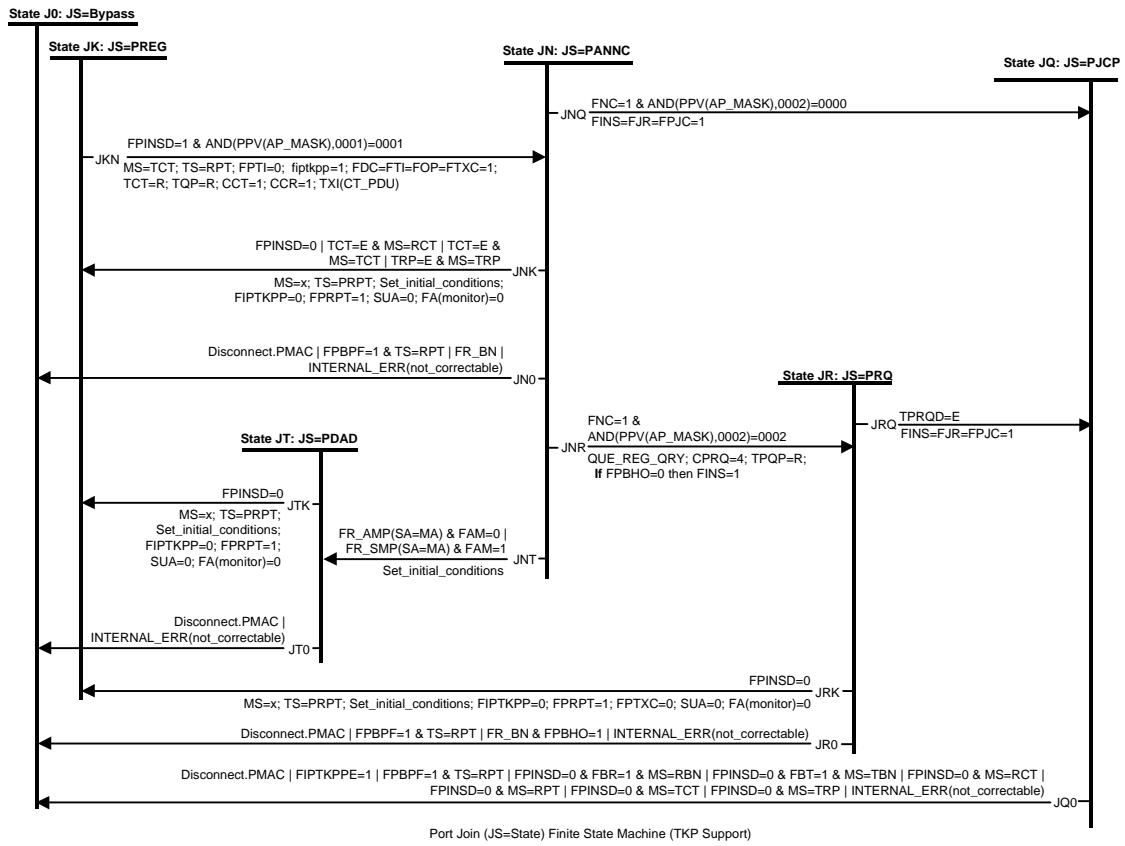
22 The rules for these FSMs are identified in 9.1.1.9.



Port Join (JS=State) Finite State Machine (TXI Support)

25 Figure M-1: C-Port Join (JS=State) Finite State Machine (TXI Access Protocol support)

26

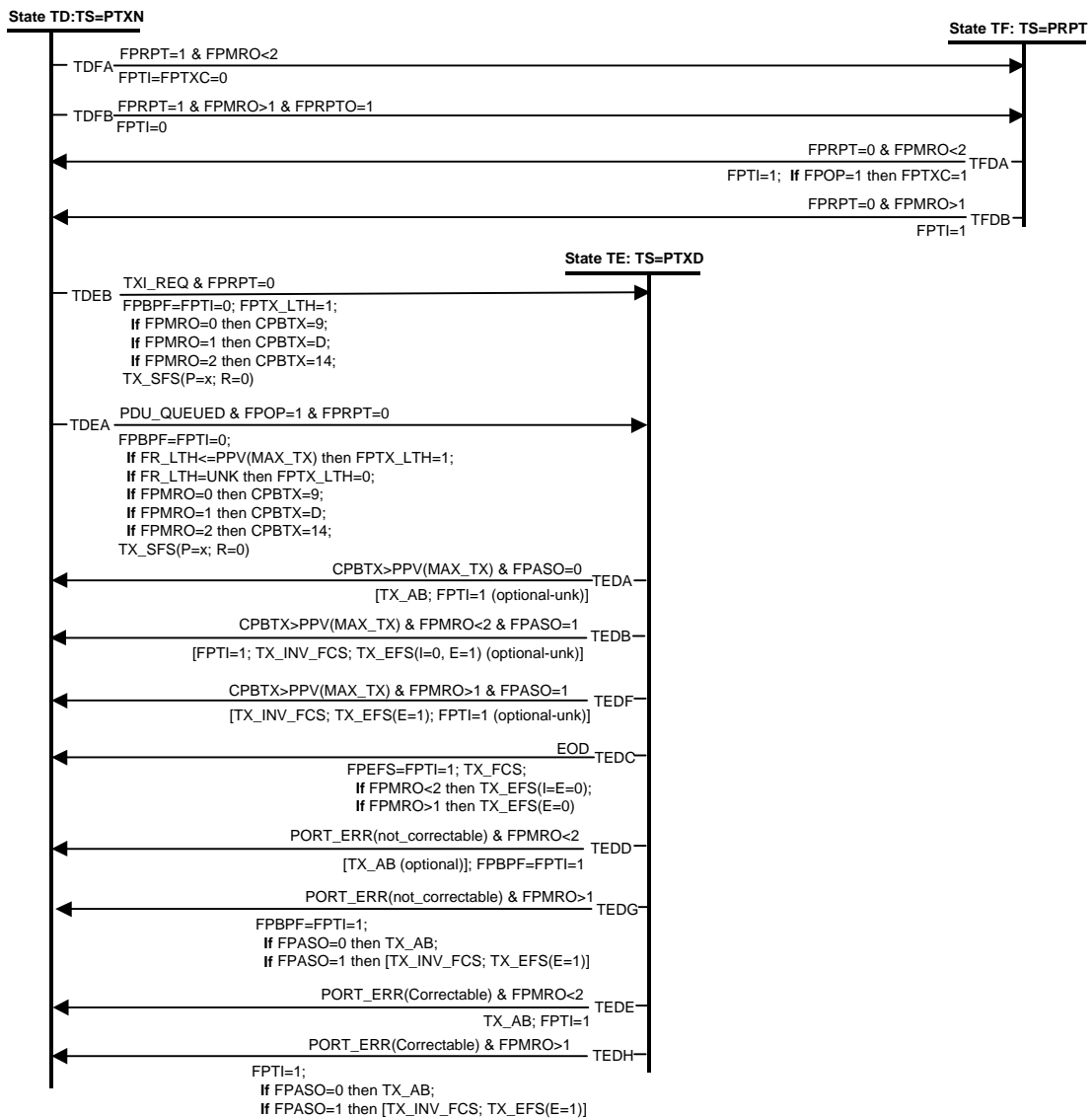


27

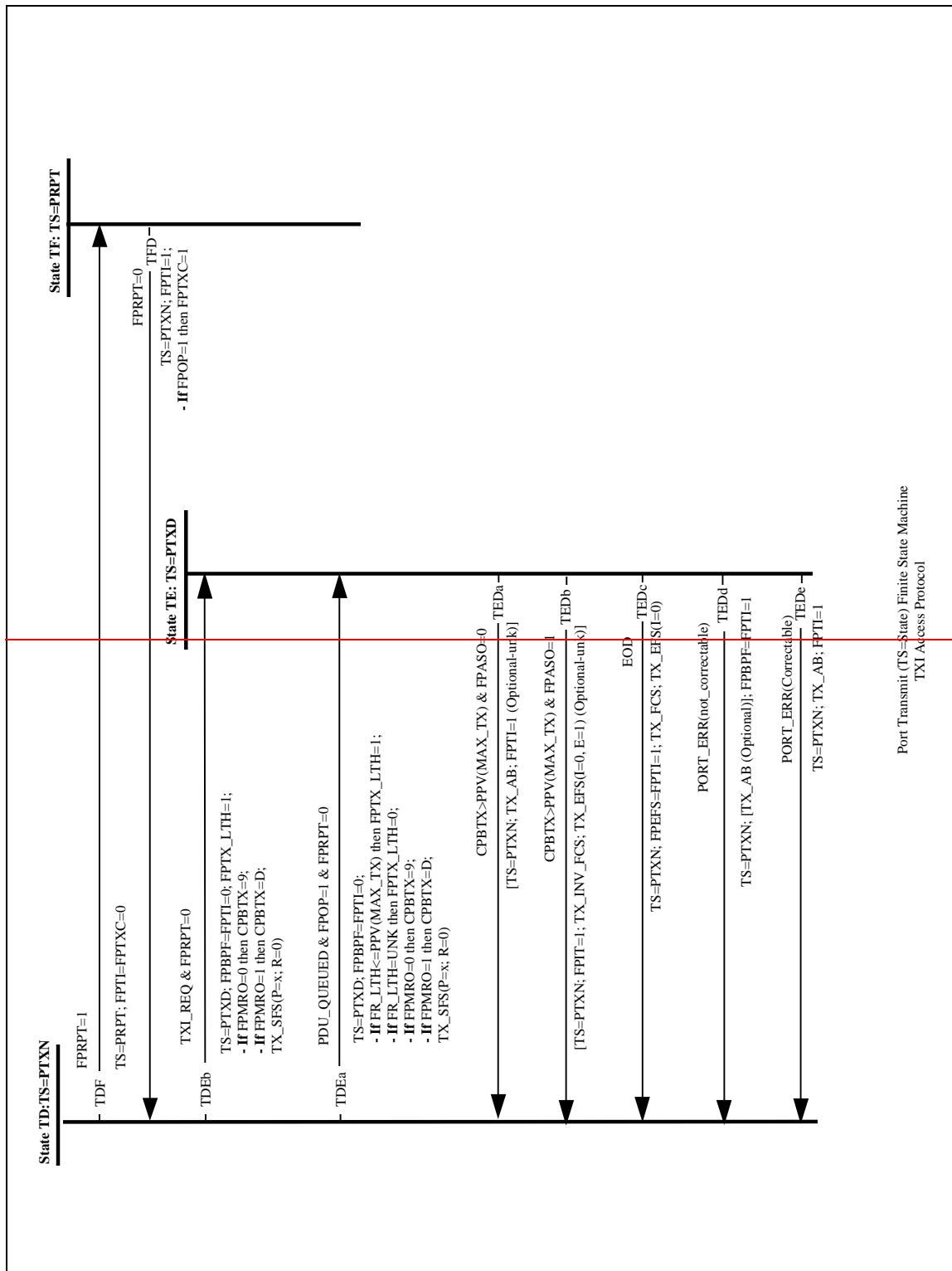
Port Join (JS=State) Finite State Machine (TKP Support)

28

Figure M-2: C-Port Join (JS=State) Finite State Machine (TKP Access Protocol support)



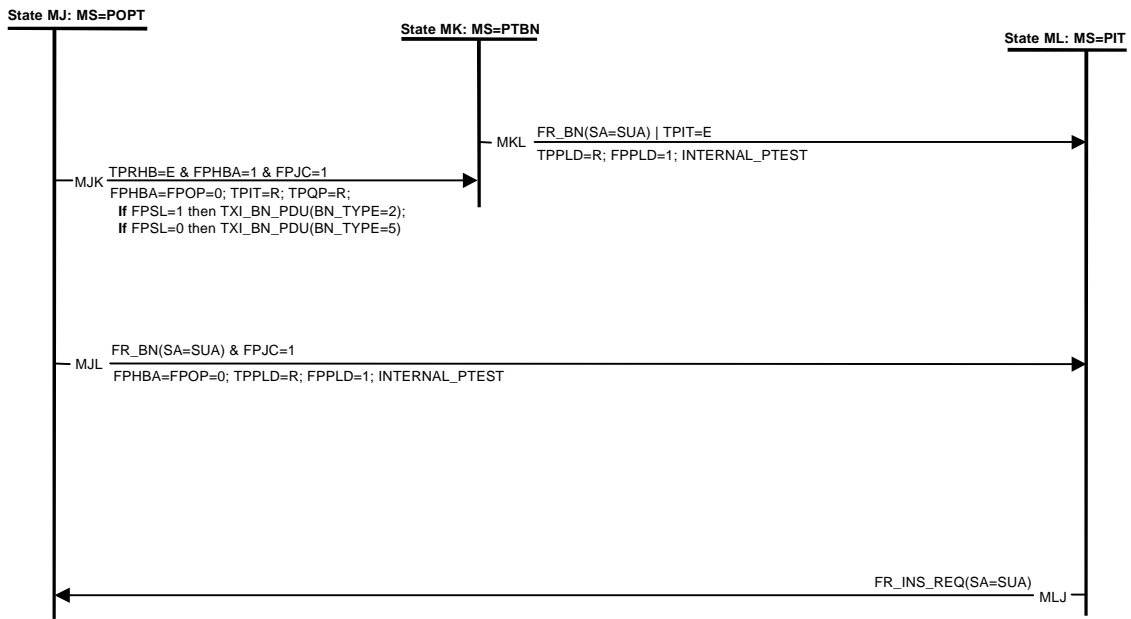
Port Transmit (TS=State) Finite State Machine
 TXI Access Protocol



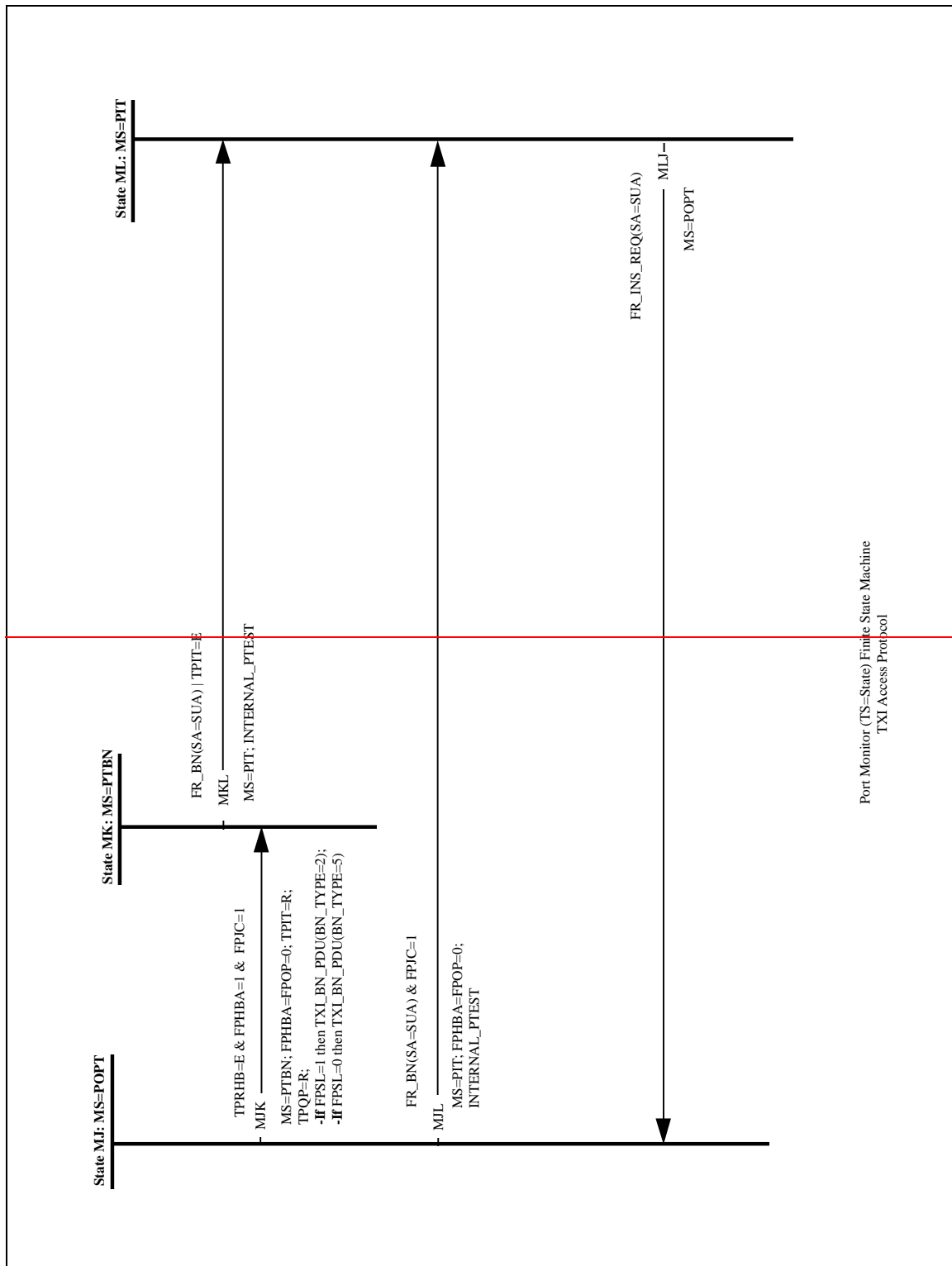
Port Transmit (TS=State) Finite State Machine
 TXI Access Protocol

31

32 Figure M-3: C-Port Transmit (TS=State) Finite State Machine, TXI Access Protocol support



Port Monitor (TS=State) Finite State Machine
 TXI Access Protocol



35

36 Figure M-4: C-Port Monitor (MS=state) Finite State Machine, TXI Access Protocol support

⇒ << End of Annex M >>

This page intentionally left blank.