



Welcome to IEEE 802 Newcomer Orientation

www.ieee802.org

IEEE 802 Plenary Session
Last updated, 3 July 2017

Contents

- Introduction to IEEE 802
- Introduction to IEEE standards process
- Getting more information

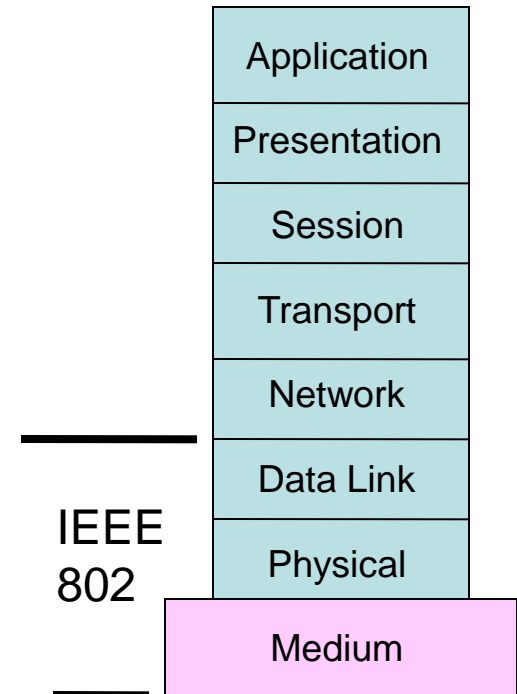


Introduction to IEEE 802

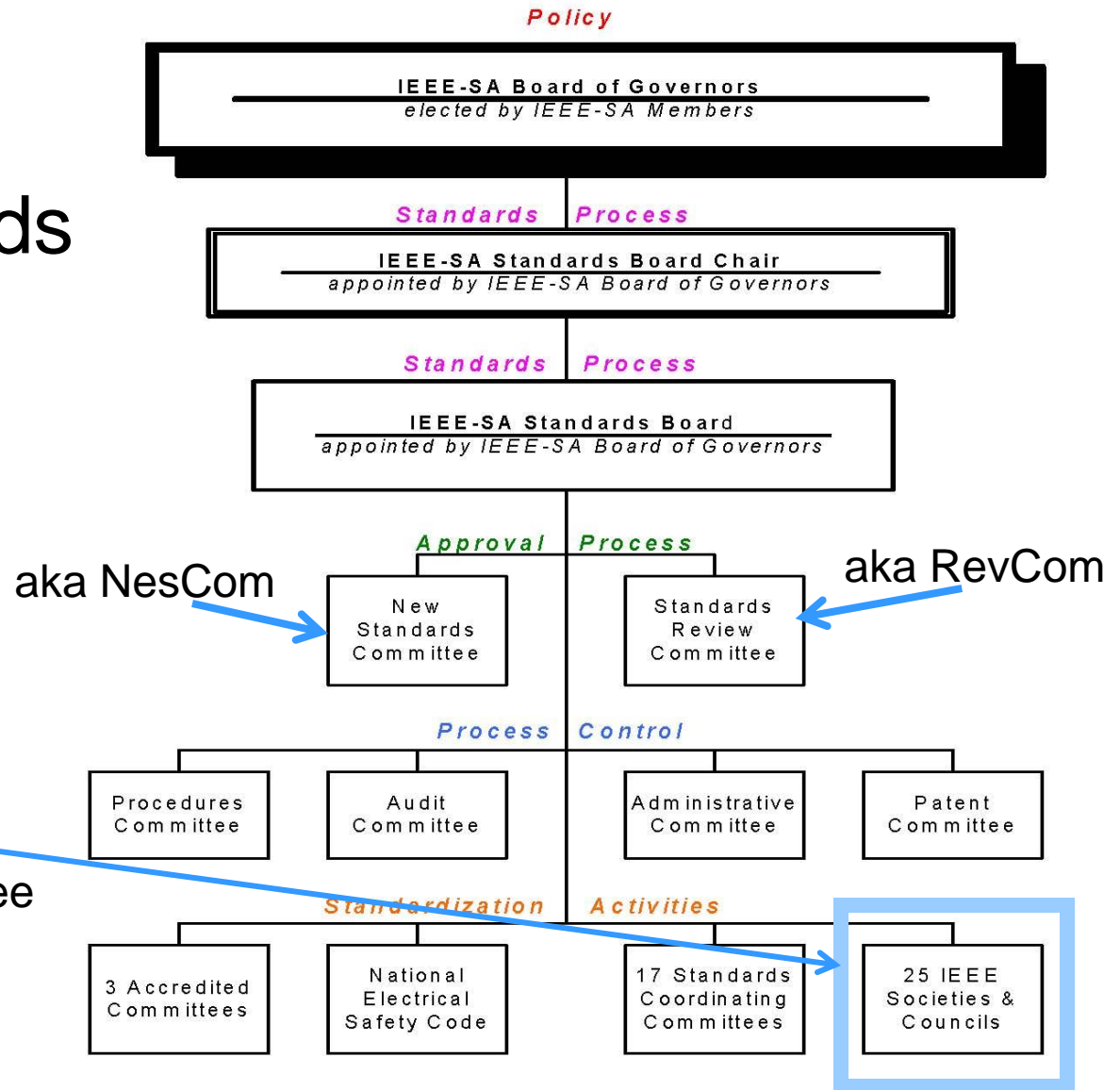
Who we are

- IEEE Project 802 LAN/MAN Standards Committee (aka IEEE 802 or LMSC)
 - Develop LAN and MAN standards
 - Mainly for link and physical layers of the network stack
 - In operation since March 1980

OSI Reference Model



IEEE Standards Organization



IEEE 802 is here:
a standards committee
formed by the
Computer Society

Individual Method

- IEEE has two types of standards groups
 - Individual method or Entity method
- IEEE 802's projects use the Individual method
- Voter's are individuals, not entities (e.g. companies)

Some terms

- PAR – project authorization request – the document that authorizes work on a project.
- WG - Working group – responsible for developing standards in an area
- TAG – Technical Advisory Group – experts on a topic area that crosses working groups.
- Task group or task force – a part of a working group which focuses on a particular project.



All those dots....decoder ring

- 802.1 Bridging and Architecture – generally the top of the link layer
- 802.3 Ethernet
- 802.11 Wireless LAN (WLAN)
- 802.15 Wireless Specialty Network (WSN)
- 802.16 Broadband Wireless Access (BWA)
- 802.18 Radio Regulatory TAG
- 802.19 Coexistence
- 802.21 Media Independent Handover
- 802.22 Wireless Regional Area Networks (WRAN)
- 802.24 Vertical Applications TAG



IEEE 802 Organization

EXECUTIVE COMMITTEE (EC)

CHAIR
Paul Nikolich

Working Group/TAG Chairs

802.1
High Level Interface
Glenn Parsons

802.3
Ethernet
David Law

802.11
WLAN
Adrian Stephens

802.15
WSN
Bob Heile

802.16
BWA
Roger Marks

802.18 TAG
Radio Regulatory
Rich Kennedy

802.19
Coexistence
Steve Shellhammer

802.21
Media indep. handover
Subir Das

802.22
WRAN
Apurva Mody

802.24
Vertical Applications
Tim Godfrey

Hibernating WG Chair (non voting)

802.20
MBWA
Radhakrishna Canchi

Appointed Officers

1st VICE CHAIR
Pat Thaler

2nd VICE CHAIR
James P.K. Gilb

EXECUTIVE SEC
Jon Rosdahl

RECORDING SEC
John D'Ambrosia

TREASURER
Clint Chaplin

Appointed Officers (non voting)

MEMBER EMERITUS
Geoff Thompson

DISBANDED

802.2 LLC

802.6 DQDB

802.9 ISLAN

802.14 CATV

802.4 Token Bus

802.7 Broadband TAG

802.10 Security

802.17 Resilient Packet Ring

802.5 Token Ring

802.8 Fiber Optic TAG

802.12 Demand Priority

802.23 Emergency Services

ec-17-0117-00-00EC

General structure of the week

	Sun	Mon	Tue	Wed	Thu	Fri
A M	Some task force/group meetings	Opening EC 802 newcomer orientation WG opening plenaries (most)	Task force/group meetings Some WG mid-week plenaries		Task force/group meetings	Some WG closing plenaries
P M		Remaining WG opening plenaries Task force/group meetings			Some WG closing plenaries TF/TG meetings	
E v e		Tutorials	TF/TG mtgs	Social	Some WG closing plenaries	

Check WG agendas for details – there is some variation between groups



Introduction to IEEE standards process

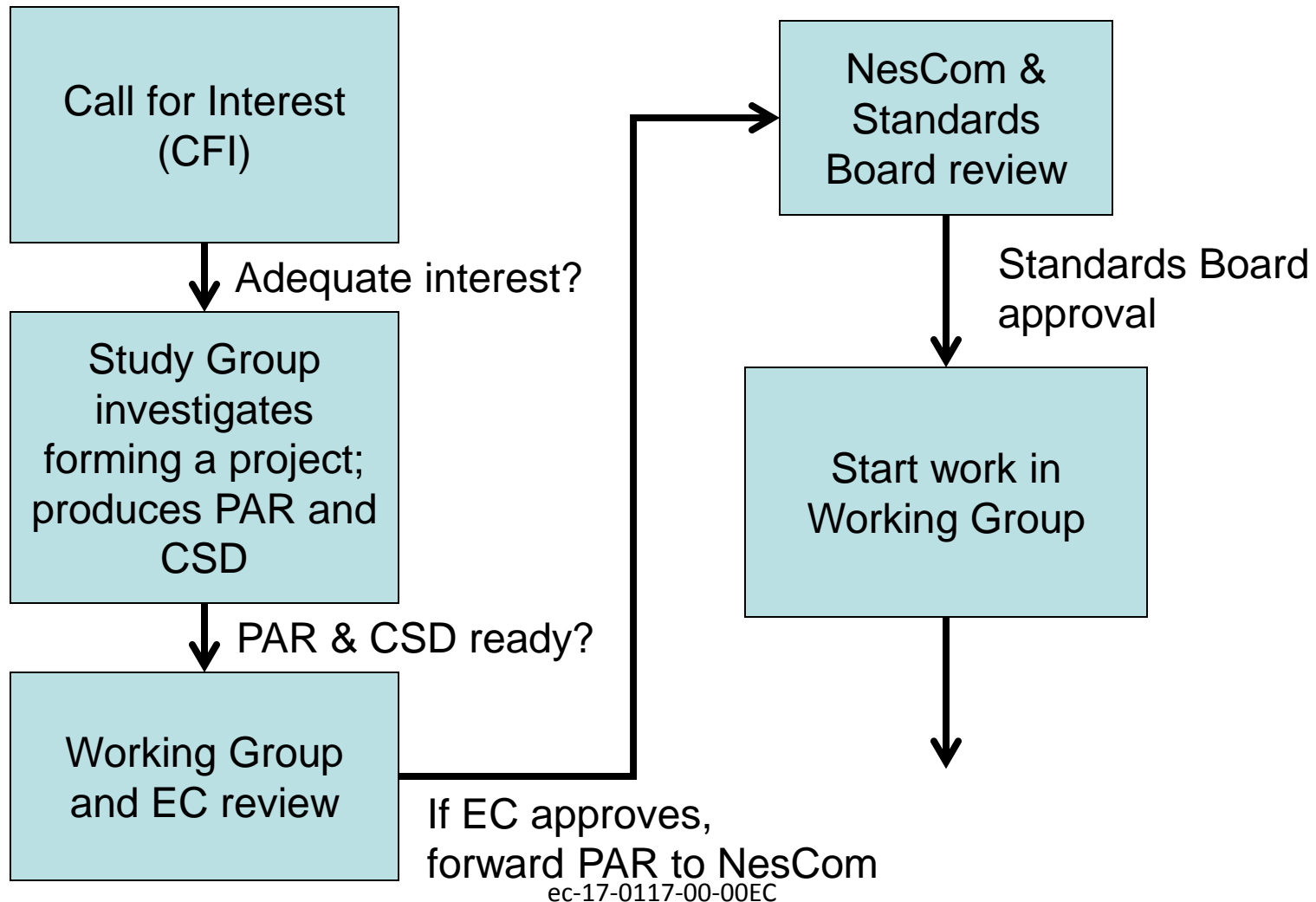
Principles of the process

- **Due process** – procedures are publicly available and followed consistently
- **Consensus** – requiring agreement of a majority or supermajority – for technical decisions here $\geq 75\%$
- **Openness** – ensuring materially interested and affected parties can participate
- **Balance** – representation from all interested parties without overwhelming influence from any one party
- **Right of appeal** – process to ensure due process

More terms

- CFI – Call for interest – a brief meeting to outline a topic and determine if there is interest in investigating possible project
- Study Group – a group formed to investigate a project and produce a PAR
- Criteria for Standards Development (CSD) – In IEEE 802 the basis for determining whether to forward a PAR.
- Five Criteria – a subset of the CSD

IEEE 802 standards development life cycle – part 1

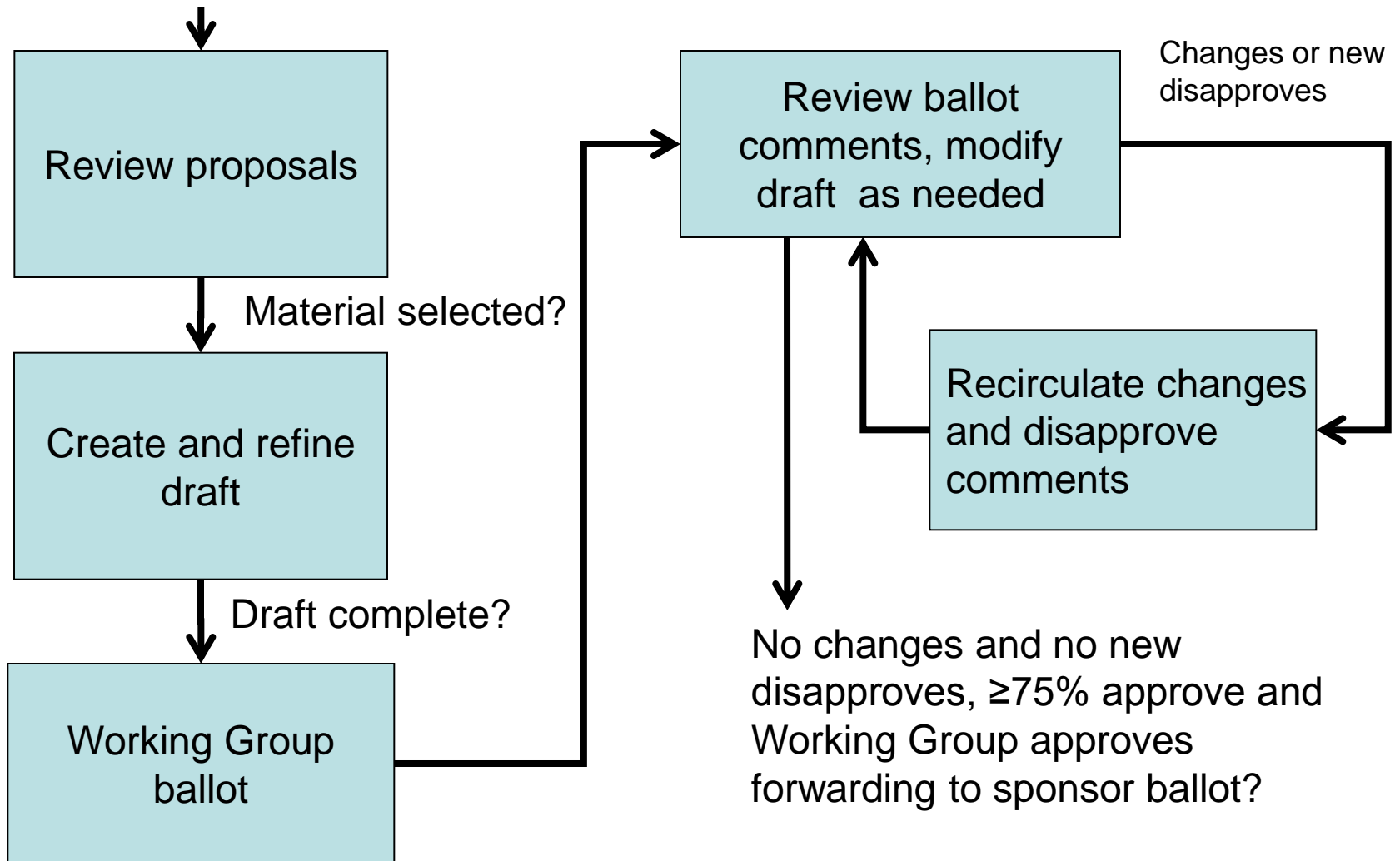




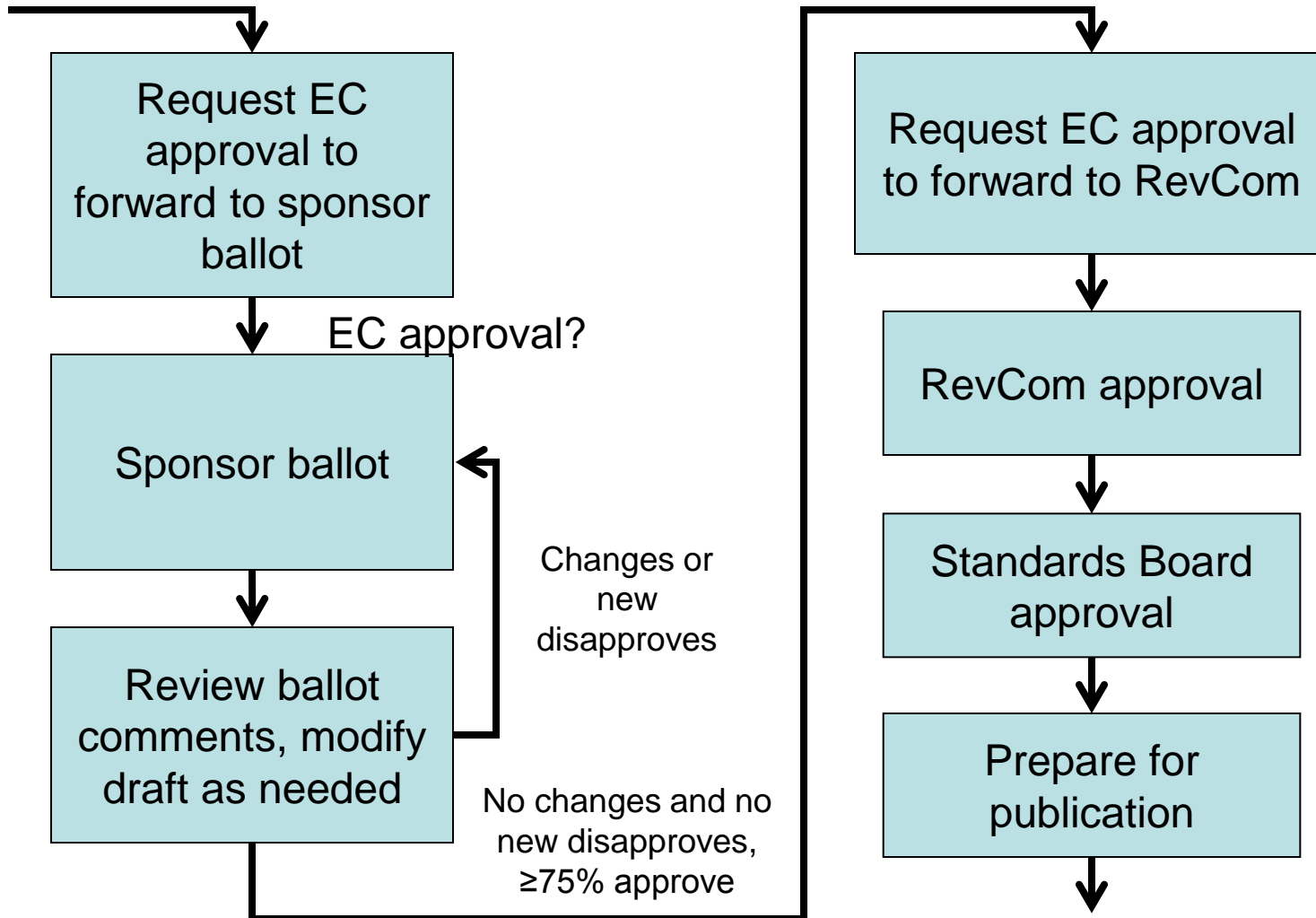
IEEE 802 criteria for standards development (CSD)

- Project Process
 - Managed objects
 - Coexistence (for a wireless project)
- Five Criteria
 - Broad Market Potential
 - Compatibility
 - Distinct Identity
 - Technical Feasibility
 - Economic Feasibility

IEEE 802 standards development life cycle – part 2



IEEE 802 standards development life cycle – part 3



Standards life cycle – part 4

And then there is maintaining the standard

- Keep the standard current by producing amendments and corrigenda (corrections)
- Renew the life of the standard with revision
- When the standard is out of date, withdraw it.

Voting and membership

- Voters have responsibility to vote on letter ballots
- Three levels of review/voting occur in IEEE 802 standards development:
 - Task force or task group review or ballot
 - Requirements vary – consult Working group.
 - Working group ballot
 - Requirements on next page
 - Sponsor ballot
 - Open to all interested parties
 - Via IEEE SA-membership
 - 60-day public review runs concurrently with sponsor balloting

Acquiring Working Group voting membership

- Participating at a meeting = at least 75% presence.
- For a new Working Group, persons participating in the initial meeting become members.
- For an existing Working Group, after attending 2 of last 4 plenary sessions or 1 plenary and 1 interim, membership starts at the next plenary attended.
 - Depending on Working Group, may require submitting an indication of intent.

Retaining Working Group voting membership

- Participate in 2 of the last 4 plenary sessions.
 - An interim may substitute for one of the 2 plenary sessions.
- Return working Group letter ballots
 - Membership may be lost for failing to respond or responding abstain for reason other than “lack of technical expertise” to 2 of the last 3 ballots.

Affiliation

- IEEE-SA Standards Board By-Laws, Section 5.2.1.5
<http://standards.ieee.org/guides/bylaws/sect5.html>
- What is affiliation?
 - You are "affiliated" with any individual or entity that has been, or will be, financially or materially supporting your participation in a particular IEEE standards activity.
 - E.g, an individual or organization supporting your participation and/or an employer
- Disclosure of affiliation is required.
 - Every member and participant shall disclose his or her affiliation.
 - Not excused from compliance with this policy by a conflicting obligation (whether contractual or otherwise) that prohibits disclosure of affiliation.

Ground rules

- Respect ... give it, get it
- NO product pitches
- NO corporate pitches
- NO prices
- NO restrictive notices – presentations must be openly available
- Silence your cell phone ringers



IEEE Patent policy see the slide set at:
<https://standards.ieee.org/about/sasb/patcom/materials.html>

IEEE 802 participation see the slide at:
<https://mentor.ieee.org/802-ec/dcn/17/ec-17-0093-05-0PNP-ieee-802-participation-slide-ppt.ppt>

Getting more information

Resources

- IEEE 802 home page:
 - <http://www.ieee802.org>
- IEEE 802 chairs, etc.
 - <http://www.ieee802.org/wgchairs.shtml>
- Links to IEEE and IEEE 802 procedural documents:
 - <http://www.ieee802.org/devdocs.shtml>
- Links to IEEE 802 WG and TAG pages:
 - <http://www.ieee802.org/dots.shtml>
- Links to these slides and IEEE 802 orientation
 - <http://ieee802.org/orientation.shtml>